

Perry County Solid Waste and Recycling Management Plan



Perry County Solid Waste and Recycling Management Plan

Prepared by Greater Egypt Regional Planning and Development Commission

Lilly Bolin – Environmental Planner

Kelsey Bowe – Environmental Planning Coordinator

Nick Keller – Environmental Planner

Tyler Carpenter – Environmental Planning & GIS Director

This report constitutes the Solid Waste Management Plan Update as required by the Solid Waste Planning & Recycling Act (415 ILCS 15)

Details regarding this Planning Process, including meeting information and other details will also be available at the following website: <https://greateregypt.org/solid-waste-planning/>

Primary County Contact:

Becky Tracy, Administrator, Perry County Solid Waste & Zoning
btracy@perrycountyil.gov 618-357-3267

*This project was fully funded through an Illinois Environmental Protection Agency (IEPA)
County Solid Waste Planning Grant*

Table of Contents

Table of Contents.....	1
1. Introduction & Planning Process.....	1
1.1. County Background.....	1
1.2. Planning Process.....	5
2. Illinois Legislation.....	7
2.1. Established State Laws.....	7
2.2. Recent Changes.....	10
3. Waste Generation and Composition.....	12
3.1. Waste Generation.....	12
3.2. Waste Composition.....	14
4. Materials Management.....	16
4.1. Landfills.....	17
4.2. Recycling.....	19
1.1.2. Recycling Program.....	20
1.1.3. Recycling Coordinator.....	20
4.3. Recycling Contamination.....	21
4.4. Tables of Regional Facilities.....	22
4.5. Specialty Events.....	30
5. Municipal Surveys.....	33
6. Public Survey.....	37
7. Hauler Survey.....	43
8. Management Strategies.....	49
9. Funding Opportunities.....	54
Appendix 1 – Notice of Planning.....	55
Appendix 2 – Meeting Agenda and Minutes.....	56
Appendix 3 – Public Survey Flyers and Publication.....	62
Appendix 4 – Public Comment Period.....	64

1. Introduction & Planning Process

1.1. County Background

Perry County, Illinois has a population of 20,945 based on the 2020 decennial census, a 6.4% decrease from 2010. The populations of incorporated areas are displayed in the table below. Land use of Perry County is largely agricultural (figure 2), although the largest industries are healthcare/ social assistance and public administration. Agriculture is the 10th highest industry (Table 2).

Table 1 - Municipal Populations

Municipality	Population
Cutler	361
Du Quoin	5827
Pinckneyville	5066
St Johns	163
Tamaroa	544
Willisville	579

Source: 2020 decennial census

Table 2 - Industry in Perry County

Industry	Employees
Total - All Industries	5,484
Health Care and Social Assistance	1,146
Public Administration	699
Educational Services	638
Retail Trade	575
Manufacturing	476
Other Services (except Public Administration)	408
Accommodation and Food Services	347
Transportation and Warehousing	260
Construction	210
Agriculture, Forestry, Fishing and Hunting	204
Finance and Insurance	182
Wholesale Trade	103
Professional, Scientific, and Technical Services	88
Administrative and Support and Waste Management and Remediation Services	63
Arts, Entertainment, and Recreation	37
Real Estate and Rental and Leasing	22
Information	19
Utilities	8
Mining, Quarrying, and Oil and Gas Extraction	0
Unclassified	0

Source: Jobs EQ, Q1 2023

Figure 1

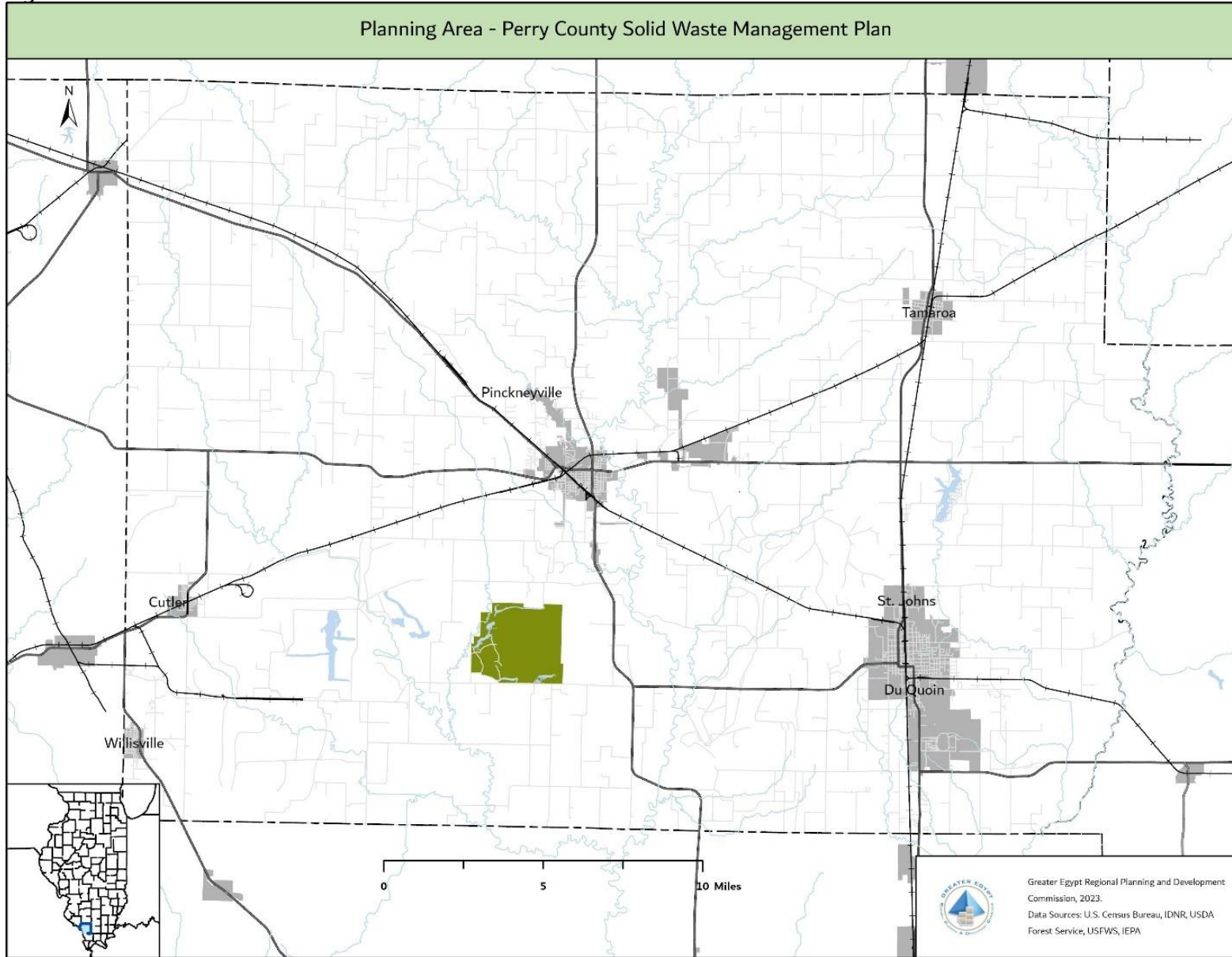
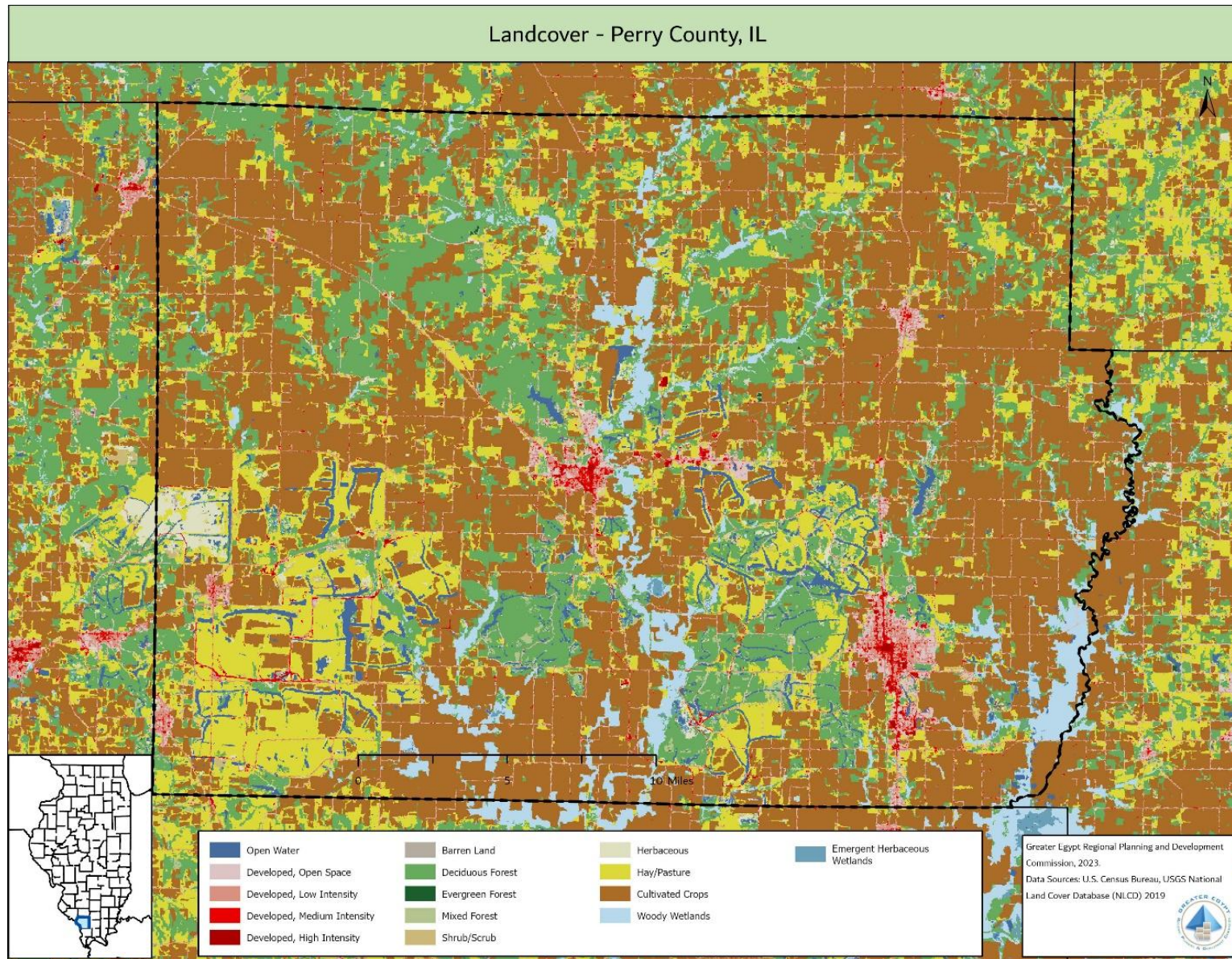


Figure 2



1.2. Planning Process

Greater Egypt reached out to Jackson County Health Department to select a coordinator to assist in the planning process. Additionally, emails and letters were sent to each municipality in the county to request participation. Waste and Recycling professionals that operate in southern Illinois were requested to participate as well. The following table displays the Perry County advisory committee. Advisory committee members provided data on their communities, attended meetings, offered suggestions for improvements in solid waste and recycling management, and provided draft comments on the Plan.

Implementation

Once finalized and adopted by the County, The Perry County Solid Waste & Zoning Department will be the leading agency in implementing the Plan and overseeing future grant applications laid out in the management strategies section. Applications and other project funding decisions will be voted on by the Perry County Board.

Table 3 - Advisory Committee

Jurisdiction	Name	Title
Perry County Solid Waste & Zoning	Becky Tracy	Administrator
Greater Egypt Regional Planning and Development Commission	Tyler Carpenter	GIS & Environmental Planning Director
	Kelsey Bowe	Environmental Planning Coordinator
	Nick Keller	Environmental Planner
Pinckneyville	Robert L Spencer	Mayor
	Carrie Gilliam	Economic Development Director
St Johns	Ruth Hawkins	Village Board
Willisville	Renee Languith	Village Clerk
Tamaroa	Cheryl Oettle	Village Clerk
Cutler	Daniel Curry	Trustee
Du Quoin	Ruth Hale	Village Clerk

Table 4 - Planning Timeline

Project Milestone	Month of Project																				
	1	2	3	4	5	6	7	8	9	10	11	12	13	14	15	16	17	18	19	20	21
Publish Notice of Planning	█																				
Organize Resources		█	█	█	█	█															
Meeting 1		█																			
Municipal Questionnaires						█															
Write Plan							█	█	█	█	█	█	█	█	█	█	█				
Meeting 2									█												
Public and Hauler Surveys													█	█							
Meeting 3																█					
Draft Review by Advisory Committee																		█			
Public Comment Period (90 days)																		█	█	█	█
Submit Plan to IEPA																				█	█

2. Illinois Legislation

Illinois does not have one specific law/act that encompasses all solid waste management issues but has many separate pieces of legislation that address the issues pertaining to municipal solid waste. The three major laws that guide and impact management strategies are the Illinois Solid Waste Planning and Recycling Act, the Illinois Solid Waste Management Act, and the Illinois Environmental Protection Act. Other related laws and recent bills signed are also included in this section.

The sections below summarize the laws, to read the legislation in full, click on the links or visit <https://ilga.gov/>

2.1. Established State Laws

[Solid Waste Planning & Recycling Act \(415 ILCS 15\)](#)

This is law guiding the organization of this Plan. Under the Solid Waste Planning and Recycling Act, all counties in the state are required to develop comprehensive solid waste management plans which are to be reviewed by the IEPA. Each plan is required to be updated and reviewed every 5 years. Specific requirements of a comprehensive plan are summarized below:

- A description of municipal waste currently generated within the county's boundaries, and estimates of waste generation during the next 20 years, including an assessment of the primary variables affecting this estimate and the extent to which they can reasonably be expected to occur. (Section 3)
- A description of current waste processing facilities and their capacity and expected lifespan. (Section 4)
- A description of proposed management strategies, other projects, or facility upgrades for the next 20 years; including size, expected cost and financing method. (Section 8)
- An evaluation of advantages and disadvantages of the proposed waste management facilities and programs. (Section 8)
- Estimated timeline for the development and operation of each proposed idea. (Section 8)
- Description of proposed project locations. (Section 8)
- The identity of the governmental entity that will be responsible for implementing the plan on behalf of the county and explanation of the legal basis for the entity's authority to do so. (Section 1)

- Any other information that the Agency may require

[The Illinois Solid Waste Management Act \(415 ILCS 20\)](#)

Passed in 1994, this act was made to provide framework for a comprehensive solid waste management program at the state level. Highlights of this Act include:

- All state agencies and local governments should consider compost product feasibility when soliciting bids for land maintenance activity, and priority should be given to compost products produced locally.
- Waste reduction programs are to be implemented in all State Agency buildings as appropriate.
- Requirements for paper products to contain post-consumer recycled materials.
- Requirements for state agencies to purchase and use other recycled products/materials whenever feasible.
- Aluminum can program requirements and use of funds generated from programs.
- Requirements for annual landfill capacity reporting
- Requirements for State-supported institutions of higher education to create waste reduction plans.

[The Illinois Environmental Protection Act \(415 ILCS 5\)](#)

This act established requirements for the issuance of permits for pollution control facilities such as landfills. There are several provisions that pertain to specific issues of solid waste management. These provisions prohibit specific items from being disposed of in Illinois' landfills.

The prohibited items are as follows:

- **Landscape Waste:** Public Act 85-1430 banned landscape waste (grass, leaves and brush) from being landfilled effective July 1, 1990.
- **Lead-Acid Batteries (Car Batteries):** Public Act 86-723 banned the landfilling of lead-acid batteries effective September 1, 1990.
- **Waste Tires:** Public Act 86-452 (1989) banned whole used or waste tires from sanitary landfills effective July 1, 1994. (Public Act 93-839 eliminated DCEO's share of the Used Tire Management.)

- **White Goods:** Public Act 87-858 banned white goods (large appliances) from being landfilled effective July 1, 1994, unless the “white good components have been removed.” White goods include “all discarded refrigerators, ranges, water heaters, freezers, air conditioners, humidifiers and other similar domestic and commercial large appliance.” White good components include: “any chlorofluorocarbons refrigerant gas; any electrical switch containing mercury; and any device that contains or may contain PCBs in a closed system, such as a dielectric fluid for a capacitor, ballast or other component.” Additionally, 9 landfills cannot accept “clean” white goods for disposal unless they participate in the Industrial Materials Exchange Service by communicating the availability of white goods.
- **Used Oil:** Public Act 87-1213 prohibits, beginning July 1, 1996, persons from knowingly mixing liquid used oil with any municipal waste that is intended for collection and disposal at a landfill. The law further stipulates that no owner or operator of a sanitary landfill shall accept liquid used oil for final disposal beginning July 1, 1996. For the purpose of this act “liquid used oil” does not include used oil filters, rags, absorbent material used to collect spilled oil, or empty containers which previously contained virgin oil, re-refined oil or used oil.

[Consumer Electronics Recycling Act \(415 ILCS 151/\)](#)

Lays out requirements for manufacturers to provide e-waste recycling programs and annual reporting. Also describes requirements for manufacturer e-waste program plans. These plans must be submitted annually and provide information to local governments and the public about how to participate in their e-waste program. This act requires manufacturers that sell Covered Electronic Devices (CEDs) in the State of Illinois to register with the Illinois Environmental Protection Agency. Collectors and Recyclers of e-waste must also register with the Agency.

[The Solid Waste Hauling and Recycling Program Act \(415 ILCS 12\)](#)

Requires each waste hauler to provide information on how and what materials to recycle at least once every other year to customers with recycling service. Haulers shall provide a written offer to provide recycling services to commercial businesses, owners or operators of commercial property, and institutional facilities that are not recycling. materials collected by a hauler within a county or municipality shall not be deposited into a landfill or incinerator unless all reasonable efforts have been made by the hauler

to sell those recyclable materials to a processor or end user. While not impacting prior contacts, the law establishes that before a municipality decides to award an exclusive or franchise contract for commercial collection they must demonstrate, with information provided by the haulers, that less than 50 percent of the commercial businesses do not have recycling services for a defined period.

2.2. Recent Changes

The following is a list of bills that Governor Pritzker has signed this year to take effect immediately or in 2025.

HB 1837 – Burning of Landscape waste changes in the Environmental Protection Act including a provision to not prohibit the burning of landscape waste by a person engaged in the business of tree removal, at the person's registered place of business, provided that the burning activity (i) is located in a county with a population of 50,000 or less, (ii) is more than 1,000 feet from the nearest residence, (iii) is not located in an area with a PM2.5 design value greater than 9 micrograms per cubic meter, (iv) is not located in an area of environmental justice concern, as determined by the Agency's EJ Start tool, and (v) is conducted in accordance with all federal, State, and local laws and ordinances. This will go into effect January 1, 2025.

SB 3686 – Creates the Portable Battery Stewardship Act. Requires those who sell or distribute covered batteries or battery-containing products in the State to implement and participate in a battery stewardship plan. Details the role of retailers in the State and stewardship plan components. States goals for the stewardship program. Provides for funding of the program. Provides requirements for the collection and management of batteries covered by this Act. Details the education and outreach requirements of the program. Outlines the Agency's role. Details the penalties for violations of the Act. Details requirements for the marking, disposal, and collection of batteries covered by this Act. Provides for the collection of batteries independent of a battery stewardship program. Defines terms. Effective immediately.

SB 2876 – Provides that the amendatory Act may be referred to as the Large Event Recycling and Composting Law. Amends the Solid Waste Planning and Recycling Act. Provides that, on and after January 1, 2025, an owner or operator of an event facility that has a maximum legal capacity or occupancy of at least 3,000 persons and that receives funding from the State of Illinois shall participate in the recycling program established by the county in which the event facility is located and shall send recyclable materials to a recycling center. Defines "event facility".

SB 0839 - Amends the Environmental Protection Act. Excludes paint and paint-related waste, as well as certain paint and paint-related waste that are hazardous waste, from the definition of "special waste". Provides that paint and paint-related waste that are hazardous waste are designated as universal waste subject to the streamlined hazardous waste rules. Provides that the Environmental Protection Agency shall propose, and the Pollution Control Board shall adopt rules to designate and provide for the management of paint and paint waste as universal waste. This shall go into effect 1/1/2025.

3. Waste Generation and Composition

This section summarizes waste generation and composition including municipal solid waste, and landscape/organic waste from residential sources, commercial /institutional / multi-family sources, and construction and demolition sources. Regulated special waste, industrial process wastes, agricultural wastes, and sludges are excluded from the definition of municipal solid waste and therefore not included in the Perry County Solid Waste Management Plan.

3.1. Waste Generation

Waste generation refers to the refers to the weight of materials and products as they enter the waste management system from residential, commercial, and institutional sources and before recycling, composting, combustion or landfilling takes place.

To examine the waste generated in Perry County the management plan is using municipal solid waste (MSW) generation data that was collected in the Illinois Commodity/Waste Generation and Characterization Study Update which was released in 2015. In that study update they categorize the municipal by type of waste, paper, plastic, glass, metal, organics, and inorganics. A breakdown of the composition of each type of MSW is discussed in the following section and can be seen in Table 5.

The Perry County MSW generation rate is 6.07 pounds per capita per day (pcd). With most of the waste coming from paper and organics. At this generation rate the total MSW produced within the County is 24,630 tons per year. If the generation rate was to continue at the 2015 level adjusted to the 2020 population data of 20,945. Which is down from 22,247, and it would bring the total MSW down to 23,189 tons per year. With the estimated population in 2035 from the IDPH, 21,852, the total MSW would increase up to 24,193 tons per year. Per capita waste generation is not expected to change significantly for the next 20 years. Unless significant changes to commercial food and product packaging are made at a state or national scale, the average person will likely maintain the same purchasing habits throughout their life. Much of the paper, cardboard, plastic, and foam waste that we throw away is a result of how materials are packaged and supplied to retailers. Small rural communities such as those in southern Illinois have limited options for shopping and product choice.

There are some limitations to this MSW data. First being that there hasn't been a waste generation and characterization study conducted since 2015, so all the official data on a county wide level that is included in this report is almost a decade old. So, the estimated data may vary significantly from the actual data of the MSW generation in Perry County.

Table 5 - Waste Generation Summary and Future Projection

Material Generation	(2015) tons	(2020) tons (estimate)	(2035) tons (estimate)	Percent of Total
Paper	4580	4312	4499	18.60%
Beverage Containers	50	47	49	0.20%
Plastic	3,140	2,956	3,084	12.75%
Glass	950	894	933	3.86%
Metal	1,370	1,290	1,346	5.56%
Organics	6,110	5,752	6,002	24.81%
Inorganics	1,970	1,855	1,935	8.00%
Textiles	1,040	979	1,022	4.22%
Household Hazardous Waste	310	292	304	1.26%
Construction and Demolition Debris	5,110	4,811	5,019	20.75%
<i>Total MSW WEIGHT (tons)</i>	24,630	23,189	24,193	
<i>Population</i>	22,247	20,945	21,852	
<i>Total MSW (lbs/person/day)</i>	6.07	6.07	6.07	

Source: 2015 Illinois Commodity/Waste Generation and Characterization Study Update

3.2. Waste Composition

The breakdown of the composition of MSW generated in Perry County can be seen in Table 6 and Figure 3 below. The highest portion of the MSW is Organics at 24.8% of the total MSW, and the smallest portion being beverage containers at 0.2%. This data came from the 2015 Illinois Commodity/Waste Generation and characterization. As a part of that study, samples of residential and commercial waste were sorted at landfills and transfer stations to identify the material components in waste that is disposed.

Figure 3

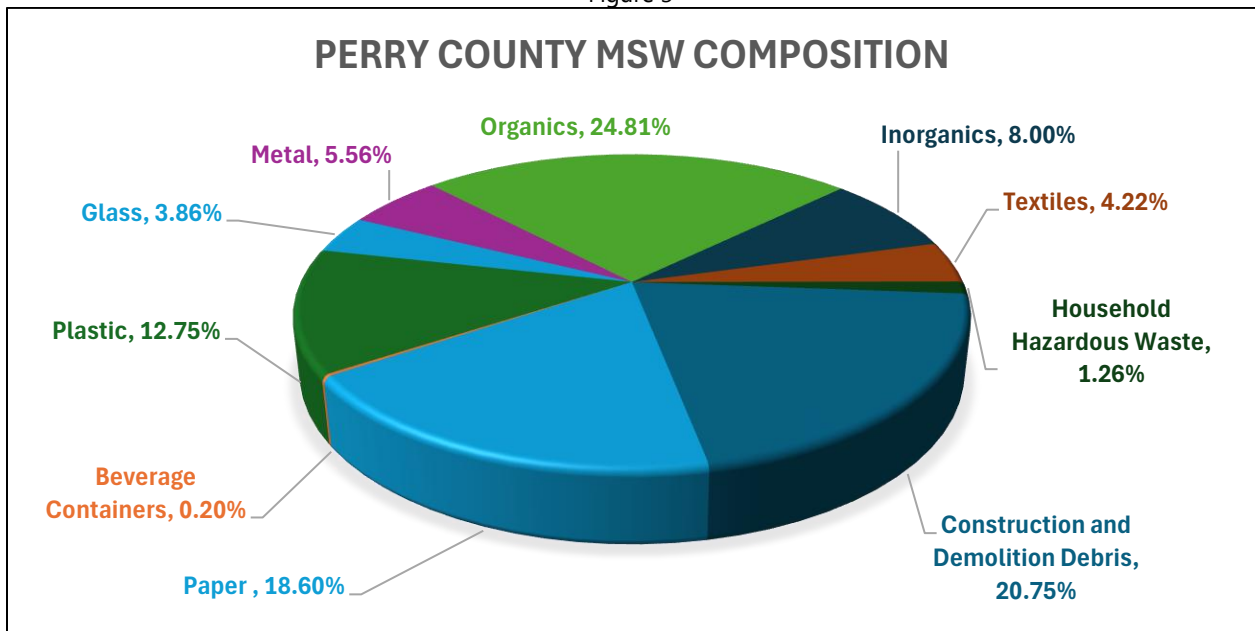


Table 6 - Waste Generation & Composition Data for Perry County

Material	County Generation (lb/c/yr)	Total Generation (tons)	Material	County Generation (lb/c/yr)	Total Generation (tons)
Paper	411.7	4580	Metal	123.2	1370
Newsprint	64.7	720	Aluminum Beverage Containers	15.3	170
High Grade Office Paper	24.3	270	Other Aluminum	9.0	100
Magazines/Catalogs	27.9	310	Ferrous Containers (Tin Cans)	22.5	250
Uncoated OCC/Kraft	101.6	1130	Other Ferrous	51.2	570
Boxboard	54.8	610	Other Non-Ferrous	9.0	100
Mixed Paper - Recyclable	53.0	590	Other Metal	16.2	180
Compostable Paper	72.8	810	Organics	549.3	6110
Other Paper	12.6	140	Yard Waste - Compostable	117.8	1310
Beverage Containers	4.5	50	Yard Waste - Woody	23.4	260
Milk & Juice Cartons/Boxes - Coated	4.5	50	Food Scraps	284.1	3160
Plastic	282.3	3140	Bottom Fines & Dirt	44.9	500
#1 PET Bottles/Jars	16.2	180	Diapers	36.9	410
#1 Other PET Containers	4.5	50	Other Organic	42.3	470
#2 HDPE Bottles/Jars - Clear	8.1	90	Inorganics	177.1	1970
#2 HDPE Bottles/Jars - Color	7.2	80	Televisions	5.4	60
#2 Other HDPE Containers	0.9	10	Computer Monitors	3.6	40
#6 Exp. Polystyrene Packaging	18.9	210	Computer Equipment/Peripherals	7.2	80
#3-#7 Other - All	12.6	140	Electronic Equipment	14.4	160
Other Rigid Plastic Products	57.5	640	White Goods - Refrigerated	10.8	120
Grocery & Merchandise Bags	9.9	110	White Goods - Not refrigerated	23.4	260
Trash Bags	33.3	370	Lead-acid Batteries	18.0	200
Commercial & Industrial Film	28.8	320	Other Household Batteries	4.5	50
Other Film	58.4	650	Tires	26.1	290
Other Plastic	26.1	290	Household Bulky Items	62.9	700
Glass	85.4	950	Fluorescent Lights/Ballasts	0.9	10
Recyclable Glass Bottles & Jars	67.4	750	Textiles	93.5	1040
Flat Glass	9.9	110	Carpet	24.3	270
Other Glass	8.1	90	Carpet Padding	6.3	70
			Clothing	39.6	440
			Other Textiles	23.4	260
			Household Hazardous Waste	27.9	310
			Construction and Demolition Debris (C&D)	459.4	5110
			Total MSW (tons)		24630
			Total MSW (pounds/person/day)		6.07

Source: 2015 Illinois Commodity/Waste Generation and Characterization Study Update

4. Materials Management

Introduction

The solid waste in southern Illinois generally goes to one of 3 facilities:

- Transfer Stations – Temporary storage and processing facilities for solid waste. Waste is dropped off by the public and/or commercial haulers in small loads. It is then consolidated and transferred to landfills or recycling centers.
- Landfills – specifically designated sites for the disposal of waste materials. This is the final location for most waste in our region. Landfills may vary in design, storage, compaction practices, however they must meet the requirements set forth by the federal and state Environmental Protection Agencies.
- Recycling Center – Recyclables from haulers and the public are sometimes brought to recycling centers. The materials accepted and processing techniques vary widely from facility to facility; this Plan will describe the ones in our region.

Currently, Perry County has one recycling drop off center at the county administration building in Pinckneyville. There are several hauling companies that offer curbside recycling options – see hauler survey section for details.

Interactive Map

[Click here to view an interactive map showing regional waste and recycling facilities!](#)

This is a living document and will be kept as up to date as possible

4.1. Landfills

Any collected municipal solid waste that is not recycled will eventually end up in one of three regional landfills. These landfills all have life expectancies far exceeding 20 years, therefore there are no recommendations to create new landfills or facilities for the collection of solid waste.

Perry Ridge Landfill

Located in Perry County, this landfill had a 5-year average of 192,750 cubic yards disposed per year. The remaining capacity as of 01/01/2023 was over 10 million cubic yards, with a lifetime expectancy of 53 years. It is classified as a Subtitle D non-hazardous wastes landfill.

Table 7

Accepted	Not Accepted
Asbestos	Hazardous Wastes
CERCLA Wastes	E-Wastes (including all types of electronic equipment, commercial and residential)
Coal Ash (conditioned and dry)	Florescent Lightbulbs
Construction & demolition debris	Landscape Waste
Containerized waste	Medical Waste
Contaminated soil and debris	Motor Vehicle Batteries
FGD Wastes (conditioned and dry)	PCB Wastes (except as provided under TSCA)
Municipal Solid Waste	Used Motor Oil
Off Spec and out of date chemical and consumer products	Used Tires
RCRA Empty Containers	White Goods (i.e., large household appliances)
Liquids from industrial processes for solidification	
Sludges from industrial processes and municipal sewage treatment	
Wastewater and Water Treatment Sludge	

Southern Illinois Regional Landfill

Owned and operated by Republic Services, this landfill is in Jackson County. Their 5-year disposal average was 442,357 cubic yards with a remaining capacity of over 15 million cubic yards. The remaining life expectancy of this landfill is 35 years.

Table 8

Not Accepted:	
Batteries	Household Hazardous Waste (household cleaners, pesticides, solvents, fertilizers, antifreeze)
Ashes	Liquids
Electronics	Medical Waste/Sharps
Yard Waste (limbs, twigs, stumps, soil, grass clippings, gumballs)	Medication
Motors or Parts of Motors	Chemical Waste
Lawnmowers	Radioactive Waste
Empty tanks – Gas, Oil, Fuel,	Reactive Waste
Tires	Corrosive Waste
Paint	Septic/Sewer Waste
White Goods/Appliances - Refrigerators, Stoves, Freezers, Washers, Dryers, etc.	Compressed Cylinders
Used Oils - Motor, Hydraulic, Mineral, Cutting, etc.	Cars, Trucks, Motor Homes, Buses (No Vehicles) or parts
Furnaces/Water Heaters	Automotive Camper Shells
Air Conditioners/Mercury Thermostats or switches	Fluorescent Lights/Tubes
Flammable Waste – Propane Tanks	

West End Disposal Facility

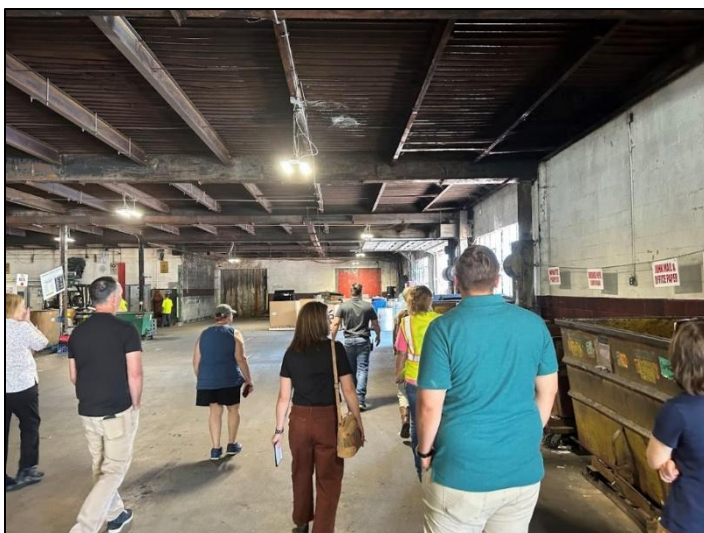
West End Disposal Facility in Saline County has the longest life expectancy in the region at 68 years. Their 5-year disposal average was 143, 436 cubic yards with slightly under 10 million cubic yards of space available. This landfill is owned and operated by Waste Connections. While this company also provides hauling services, they do not currently contract with any of the Perry County municipalities.

Table 9

Accepted	Not Accepted
Municipal Solid Waste	Hazardous wastes
Asbestos	White Goods (i.e., large household appliances)
Approved special wastes	Tires
	Electronics
	Bulk Liquids

4.2. Recycling

Perry County has one recycling drop-off station in Pinckneyville, and two haulers that offer curbside recycling- Second Cycle and Republic Services. Jackson County is home to CRC Southern Recycling, a regional sorting and processing center for many different recyclable materials. They accept materials from the public and commercial haulers. This recycling center came under CRC ownership recently, and several upgrades are planned to increase the capacity and diversity of materials accepted; and improve the recycling process for everyone in the community.



Left: Greater Egypt staff and other community leaders tour the CRC Facility with general manager Loren Grey. Photo by Kelsey Bowe.

Republic Services also owns a recycling center: Republic Services Recycling Southside MRF, in St Louis Missouri. All recycling picked up by Republic Services goes to this location, while most other haulers in the region utilize CRC Southern Recycling.

Because these two locations already fill the need of recycling drop-off and processing for both haulers and the public in the region; it is not recommended to build any new recycling sorting/processing facilities.

1.1.2. Recycling Program

Due to the small population size and limited financial resources of Perry County, there is not a County-wide recycling program apart from the current drop-off site; and the County does not plan to implement one in the next 20 years. It would not be cost effective for the county to so do, there would not be a profit in collecting recyclables with such a spread out, rural population. If funding became available, Perry County would like to add a recyclables drop-off station in the City of Du Quoin, however they currently do not have the funding nor the staff to manage a second site.

For information on Perry County Recycling Events, please visit

<https://www.facebook.com/PerryCountySolidWasteRecycling>

For information on curbside programs, contact your municipality or private waste hauler to determine if services are available in your area. More information on current programs can also be found in sections 4.4, 4.5, 5, and 7.

1.1.3. Recycling Coordinator

Becky Tracy is the current administrator for Perry County Solid Waste and Zoning. She currently oversees the Pinckneyville Recycling drop-off station as part of the duties of this position

4.3. Recycling Contamination

The largest issue haulers and recycling centers face is contamination of loads.

Recyclables placed into drop off bins or curbside bins must be loose. Items in bags significantly increase staff sorting time, bags can also clog machinery in hauling trucks and on the sorting line. Other contamination problems come from non-recyclable items being mixed in with recycling loads. Always check your local regulations from your municipality or hauling company to make sure the material will be accepted. If your curbside hauler refused to take your recycling bin or trash, you may have placed unaccepted items within, it is the responsibility of the household to ensure materials in waste and recycling bins will be accepted before they are placed at the curb. Penalties for causing contamination at the Pinckneyville drop-off site include warnings and fines.

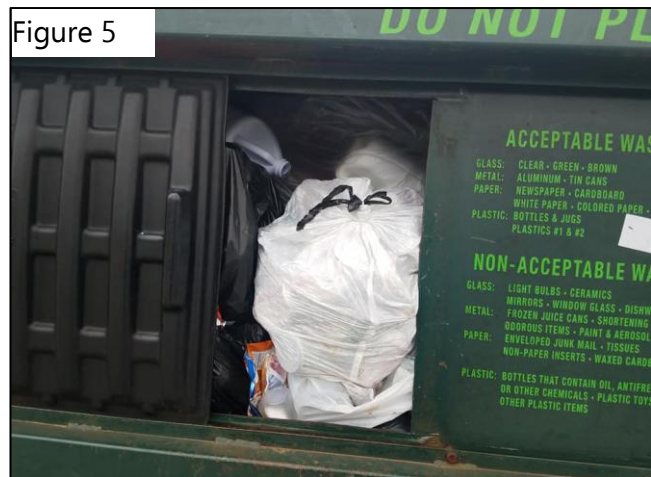
Figure 4



Left: the intake center at CRC Southern Recycling. All of the plastic bags have to be manually opened by staff members before items can be sorted for recycling. This adds significant time and delays the amount of material that can be processed in a day. Photo by Kelsey Bowe

Below: Items in bags at the Perry County Drop-off station. Items should be dumped in loose and the bag recycled or disposed of separately. Photo from Perry County Solid Waste & Recycling Facebook Page.

Figure 5



4.4. Tables of Regional Facilities

Table 10 - Landfills

<u>Landfills</u>	<u>County</u>	<u>Materials Accepted</u>	<u>Open to</u>	<u>Website</u>	<u>Phone</u>	<u>Address</u>
Perry Ridge Landfill	Perry	Municipal solid waste	Public, commercial haulers	https://www.perryridgelandfill.com/	(630) 653-3700 (corporate number)	6305 Sacred Heart Rd. Du Quoin IL
Marion Ridge Landfill	Williamson	NA, facility not yet in operation	NA, facility not yet in operation			11178 North Skyline Drive, Marion IL 62959
Southern Illinois Regional Landfill	Jackson	Municipal solid waste	Public, commercial haulers	https://www.republicservices.com/	(618) 867-2909	1540 Landfill Rd, De Soto, IL 62924
West End Disposal Facility	Saline	Municipal solid waste	Public, commercial haulers	https://www.wasteconnections.com/west-end-landfill/	(618) 268-9412	1710 McFarland Rd #2061, Thompsonville, IL 62890

Table 11 - Transfer Stations

<u>Transfer Stations</u>	<u>County</u>	<u>Materials Accepted</u>	<u>Open to</u>	<u>Website</u>	<u>Phone</u>	<u>Address</u>
Energy Transfer Station	Williamson	Municipal solid waste	Public, commercial haulers	https://energytransferstation.com/	(618) 727-7040	703 E College St, Marion, IL 62959
Herrin Transfer Station	Williamson	Municipal solid waste	Public, commercial haulers	https://www.republicservices.com/	(618) 942-2193	13129 Bandyville Rd, Herrin, IL 62948
Mt. Vernon Transfer Station	Jefferson	Municipal solid waste	Public, commercial haulers	https://www.republicservices.com/	(618) 242-3701	1106 Rackaway St. Mt Vernon IL 62864
Metropolis Massac County Transfer Station	Massac	Municipal solid waste, construction/de molition waste	Public, commercial haulers		(618) 543-7308	901 Joppa Rd, Metropolis, IL 62960
Sparta Transfer Station	Randolph	Municipal solid waste	Public, commercial haulers	https://www.republicservices.com/	(800)631-1156	8384 Valley Steel Rd. Sparta, IL 62286

Table 12 - Recycling Facilities

<u>Recycling Facilities</u>	<u>County</u>	<u>Materials Accepted</u>	<u>Open to</u>	<u>Website</u>	<u>Phone</u>	<u>Address</u>
CRC Southern Recycling	Jackson	Many – see below	Public, commercial haulers	https://crcrecycling.com/	(618) 549-2880	300 W Chestnut St, Carbondale, IL 62901
Progress Port	Williamson	Plastic #1 & #2, paper, glass (brown, clear, green), aluminum cans, steel(tin) cans, cardboard, bagged shredded paper, shredding services, plastic & wood pallets	Public	http://www.progressportinc.com/services/recycling-center/	(618) 985-8351	1120 N Division Carterville, IL 62918
Do Your Part Recycling	Franklin	Plastics 1-7 and bags, cardboard, mixed paper, steel, aluminum (no longer accepting glass)	Public	https://www.facebook.com/DoYourPartRecycling/	(618) 218-6646	309 E Main St Benton IL 62812
Cimco Recycling - Marion	Williamson	Metals	Public, commercial haulers	https://www.cimcoresources.com/	(618) 997-5400	9450 IL-148, Carterville, IL 62918
Cimco Recycling - Carbondale	Jackson	Metals	Public, commercial haulers	https://www.cimcoresources.com/	(618) 457-6319	2622 New Era Rd, Murphysboro, IL 62966
T & T Recycling - Hurst	Williamson	Metals	Public, commercial haulers	http://www.tandtr recycling.com/	(618) 987-2088	16917 State Highway 149
T&T Recycling - Benton	Franklin	Metals	Public, commercial haulers	http://www.tandtr recycling.com/	(618) 435-5305	7533 IL-37, Benton, IL 62812
Ashalex Recycling	Williamson	Construction/demolition waste	Commercial haulers		(618) 942-3880,	Skyline Rd. Marion, IL 62959
Milano Metals & Recycling	Jefferson	Metals	Public	https://milanometals.com/	(618) 244-3168	510 S 6th St, Mt Vernon, IL 62864
Tilly's Salvage Yard	Jackson	Metals	Public		(618) 790-3592	24634 US-51, Elkhville, IL 62932

Many commercial retailers also take certain recyclable materials. Home improvement and electronics stores often accept lithium-ion batteries and other devices. Nearly all commercial grocery stores accept plastic bags to be recycled. Call locations in your area to see what materials are accepted.



INNOVATIVE SOLUTIONS FOR A GREENER FUTURE

Materials Accepted at Carbondale Recycling Facility Drop-off:

- Aluminum Cans & Tin Cans
- Books (Hard-back & Soft-back)
- Box Board (i.e. food boxes, soda/beer boxes, etc.)
- Cardboard
- Clothes Hangers (Metal)
- Clothing (No Blankets, Pillows, Sheets, Towels, etc.)
- Dishwasher with metal inside
- Dryers/Stoves/Washers/Water Heaters
- Electronics (No more than 10 items per month)
- Glass Bottles/Jars (Clear and Colored)
- Holiday Lights
- METAL Fans, Irons, Tools, Miscellaneous metals
- Toaster Ovens
- Plastics (All but #6)
- Newspaper, Office Paper, Shredded Paper, Junk Mail/Colored Paper
- Magazines/Catalogs, Telephone Books
- Treadmills
- Windowpane Glass (not tempered glass)

Table 13 - Recycling drop-off locations

<u>Recycling Drop Off Locations</u>	<u>County</u>	<u>Materials Accepted</u>	<u>Open to</u>	<u>Website</u>	<u>Phone</u>	<u>Address</u>
Perry County Recycling	Perry	Plastic #1 & #2, paper, glass (brown, clear, green), aluminum cans, steel(tin) cans	Public	https://www.facebook.com/PerryCountySolidWasteRecycling/	618-357-3267	3764 State Route 127/13 Pinckneyville, IL 62274
Williamson County Courthouse	Williamson	Plastic #1 & #2, paper, cardboard, glass (brown, clear, green), aluminum cans, steel(tin) cans	Public- Mon, Wed, Fri 9AM-12Pm only	https://www.williamsoncountyil.gov/recycling/		N Monroe St (across from county Admin bldg.)
Chistopher Drop-off	Franklin		Public			S Mulkey St
Sesser Drop-off	Franklin		Public			303 Franklin St, Sesser IL
Jackson County 1 - Health Dept	Jackson	Plastic #1 & #2, paper, cardboard, glass (brown, clear, green), aluminum cans, steel(tin) cans	Public	https://jchdonline.org/recycle-jackson-county/	(618) 684-3143	415 Health Dept. Rd Murphysboro, IL 62966
Jackson County 2 - U of I Extension	Jackson	Plastic #1 & #2, paper, cardboard, glass (brown, clear, green), aluminum cans, steel(tin) cans	Public	https://jchdonline.org/recycle-jackson-county/	(618) 684-3143	402 Ava Rd. Murphysboro, IL 62966
Jackson County 3 - Campbell Hill	Jackson	Plastic #1 & #2, paper, cardboard, glass (brown, clear, green), aluminum cans, steel(tin) cans	Public	https://jchdonline.org/recycle-jackson-county/	(618) 684-3143	Rock Crusher Road Campbell Hill, IL 62916
Jackson County 4 - Ava	Jackson	Plastic #1 & #2, paper, cardboard, glass (brown, clear, green), aluminum cans, steel(tin) cans	Public	https://jchdonline.org/recycle-jackson-county/	(618) 684-3143	Intersection of Main Street & Keller Highway Ava, IL 62907

<u>Recycling Drop Off Locations</u>	<u>County</u>	<u>Materials Accepted</u>	<u>Open to</u>	<u>Website</u>	<u>Phone</u>	<u>Address</u>
Carbondale 1	Jackson	Plastic #1 & #2, paper, cardboard, glass (brown, clear, green), aluminum cans, steel(tin) cans	Public	https://explorecarbon dale.com/171/Refuse-Recycling-Landscape-Special-Progr	(618) 457-3275	875 E Grand Ave, Carbondale, IL 62901
Carbondale 2	Jackson	Plastic #1 & #2, paper, cardboard, glass (brown, clear, green), aluminum cans, steel(tin) cans	Public	https://explorecarbon dale.com/171/Refuse-Recycling-Landscape-Special-Progr	(618) 457-3275	700 S Oakland Ave Carbondale, IL 62901
Carbondale 3	Jackson	Plastic #1 & #2, paper, glass (brown, clear, green), aluminum cans, steel(tin) cans	Public	https://explorecarbon dale.com/171/Refuse-Recycling-Landscape-Special-Progr	(618) 457-3275	610 E College St Carbondale, IL 62901

Table 14 - Composting Facilities

<u>Composting Facilities</u>	<u>County</u>	<u>Materials Accepted</u>	<u>Open to</u>	<u>Website</u>	<u>Phone</u>	<u>Address</u>
New Earth Compost	Williamson	Landscaping waste	Commercial haulers, public (call ahead for appointment)		(618) 985-5007	11189 Samuel Rd, Carterville, IL 62918

Table 15 - Specialty Item Collection Locations

<u>Specialty Items</u>	<u>County</u>	<u>Materials Accepted</u>	<u>Open to</u>	<u>Website</u>	<u>Phone</u>	<u>Address</u>
Egyptian Electric Cooperative Association	Jackson	CFL lightbulbs	Public	https://eeca.coop/member-services/programs-services/	800-606-1505	1732 Finney Rd, Murphysboro, IL 62966
Midwest Tire Disposal	Franklin	Tires (fee to dispose)	Public	https://midwesttiredisposal.com/	877-617-3294	340 E Illinois Ave Benton, IL 62814
Jackson County Health Department	Jackson	CFL lightbulbs, Batteries: li-ion, small sealed lead acid, Ni-Cd, Ni-MH, Ni-Zn, button and coin cells, old cell phones	Public	https://jchdonline.org/recycle-jackson-county/	(618) 684-3143	415 Health Dept. Rd Murphysboro, IL 62966

Medicine and Sharps

Most pharmacies, hospitals, and county health departments have locations to drop off unwanted medications. Call your nearest facility to ask for details or visit <https://medtakebackillinois.org/>

Jackson County has several locations that take sharps, this program was organized by the Jackson County Health Department and grant funded through IEPA.

Table 16 - Sharps Collection Sites

<u>Medical sharps disposal</u>	<u>County</u>	<u>Materials Accepted</u>	<u>Open to</u>	<u>Website</u>	<u>Phone</u>	<u>Address</u>
Shawnee Health - Murphysboro	Jackson	needles, syringes, auto-injectors (EpiPen), lancets	Public	https://medtakebackillinois.org/	618-684-3143	7 Hospital Dr Murphysboro, IL 62966
Shawnee Health - Carbondale	Jackson	needles, syringes, auto-injectors (EpiPen), lancets	Public	https://medtakebackillinois.org/	618-684-3144	400 S Lewis Ln Carbondale, IL 62901
SIU Student Health Services	Jackson	needles, syringes, auto-injectors (EpiPen), lancets	Public	https://medtakebackillinois.org/	618-684-3145	374 E Grand Ave Carbondale, IL 62901
Jackson County Health Department	Jackson	needles, syringes, auto-injectors (EpiPen), lancets	Public	https://medtakebackillinois.org/	618-684-3146	415 Health Department Rd Murphysboro, IL 62966
Jackson County Ambulance Service	Jackson	needles, syringes, auto-injectors (EpiPen), lancets	Public	https://medtakebackillinois.org/	618-684-3147	10169 Old Highway 13 Murphysboro, IL 62966

4.5. Specialty Events

In addition to these facilities, Perry County and surrounding communities occasionally host special events for bulk item disposal, specialty recycling, and more. The table below shows annual events, this list may not include all waste & recycling events in the area, and event dates may change from year to year. Some events require proof of residency. Check with the event host or your local government for details. Many cities and villages also host their own community clean up days, check the municipal survey section for details.

Table 17 - Perry County Events

<u>Event</u>	<u>Items Accepted</u>	<u>Items Prohibited</u>	<u>Location(s)</u>	<u>City</u>	<u>County</u>	<u>Date(s)</u>
Perry County Free Dump Days	Any normally accepted household waste, Perry County Residents only	No businesses, dump trucks, or semis	Perry Ridge Landfill	Du Quoin	Perry	1st weekend of June each year
Perry County Electronics Recycling Day	electronics, appliances, and metals		Perry County Government Building	Pinckneyville	Perry	1st weekend of June each year
Perry County Document Shredding	documents		Perry County Highway Department	Pinckneyville	Perry	1st weekend of June each year

Table 18 - Regional Events




Event	Items Accepted	Items Prohibited	Location(s)	City	County	Date(s)
Rend Lake Christmas Tree Recycling	Live Christmas trees only		Rend Lake: Sugar Creek parking lot, Dam West boat ramp, Jack Branch boat ramp; Mt Vernon: Veteran's Park, Optimist Park; Marion: Ray Fosse Park, Pyramid Park	Multiple	Multiple	First 2 weeks of January
Williamson County Fall Clean Up	Municipal solid waste, electronics, tires (4 car tires per household), white goods, automotive batteries (1 per household), recyclables, plastics, metal	Yard waste, medical waste, sharps, chemicals, shingles, hazardous waste, paint	Republic Services Herrin Transfer Station	Herrin	Williamson	Spring & Fall Each Year
Shred, Med, and Sharps Disposal Day	Documents to be shredded (2 boxes per household), unwanted medications (pills, creams, and patches), medical sharps	Liquid medication, inhalers	Jackson County Health Department	Murphysboro	Jackson	Spring and fall each year
Household Hazardous Materials Collection	Household chemicals, motor oil, many others- see list prior to each event in case of changes	explosives/ammunition/ fireworks, propane tanks, radioactive waste, medical waste, single use batteries, electronics/appliances, sharps, controlled substances	SIU Banterra Center Lot Appointments required, free registration through Jackson County Health Dept Website	Carbondale	Jackson	June of each year Nov 2024, (fall date one-time event unless JCHD continues to receive funding)

Event	Items Accepted	Items Prohibited	Location(s)	City	County	Date(s)
Apple Fest Shredding Event	Documents to be shredded		Apple Fest	Murphysboro	Jackson	One time event
Pumpkin Smash	Clean (no paint, wax, or other chemicals) pumpkins & gourds	No plastic or foam pumpkins, organic waste only	SIU Farms	Carbondale	Jackson	November each year
Compost Bin Sale	NA	NA	Uofl Extension - Jackson County	Murphysboro	Jackson	One time event
Holiday Lights Collection	Holiday light strands	bulbs and lamps	CRC Recycling	Carbondale	Jackson	January of each year
Paint Swap	useable (not dried or contaminated) paints - household and craft		Has been hosted by Keep Carbondale Beautiful in the past, date may vary, does not occur every year			

5. Municipal Surveys

A short survey was sent to every city and village in Perry County at the beginning of the planning process. Below are the questions and summarized responses. Completing this form qualifies the municipal participation requirement of this plan.

Perry County Solid Waste Management Plan
Questionnaire for municipalities



Name of City/Village:

1) Does your municipality have scheduled trash pick-up? Yes No
If yes, Does the municipality run the program or do you contract with a private hauling company?

2) Does your municipality have scheduled recycling pickup? Yes No
If yes, Does the municipality run the program or do you contract with a private hauling company?

3) Does your municipality have scheduled yard waste pickup? Yes No
If yes, Does the municipality run the program or do you contract with a private hauling company, and how is the yard waste disposed of (composting center, chipped, burned)?

4) Does your municipality have recycling drop off locations? Yes No
Locations:

5) Does your municipality have electronic recycling events? Yes No
Frequency & locations:

6) Does your municipality conduct large waste pickup events or host free dump days? (Furniture, home construction waste, etc.) Yes No

Frequency & locations:

7) If your municipality is lacking waste services, would you like to suggest any for future consideration? These suggestions will be added into the Plan but you will not be required to implement them. (Can be suggested but contingent on funding/resources)

8) If you have any other comments regarding the Plan, please let us know:

List of representatives:

City/Village	Representative	Rep. Title
Cutler	Daniel Curry	Trustee
Du Quion	Ruth Hale	City Clerk
Pinckneyville	Robert Spencer	Mayor
St. Johns	Ruth Hawkins	Village Board Member
Tamaroa	Cheryl Oettle	Village Clerk
Willisville	Renee Langwith	Village Clerk

Summary of responses:

Trash Pickup?	
Yes	3
No	3

Recycling Pickup?	
Yes	0
No	6

Yard Waste Pickup?	
Yes	1
No	5

Recycling Drop-off?	
Yes	0
No	6

Electronic Recycling?	
Yes	0
No	6

Clean up/dump day Events?	
Yes	3
No	3

Full Responses:

City/Village	Trash Pickup?	Trash Company	Recycling Pickup?	Recycling Company
Cutler	Yes	Lloyd Hauling	No	
Du Quion	No		No	
Pinckneyville	Yes	Residents Choose	No	
St. Johns	No		No	
Tamaroa	No		No	
Willisville	Yes	Lloyd Hauling	No	

City/Village	Yard Waste Pickup?	Yard Waste Company	Recycling Drop-off?	Drop-off location
Cutler	No		No	
Du Quion	No		No	
Pinckneyville	Yes	Street Department picks up, composts, and burns	No	
St. Johns	No		No	
Tamaroa	No		No	
Willisville	No		No	

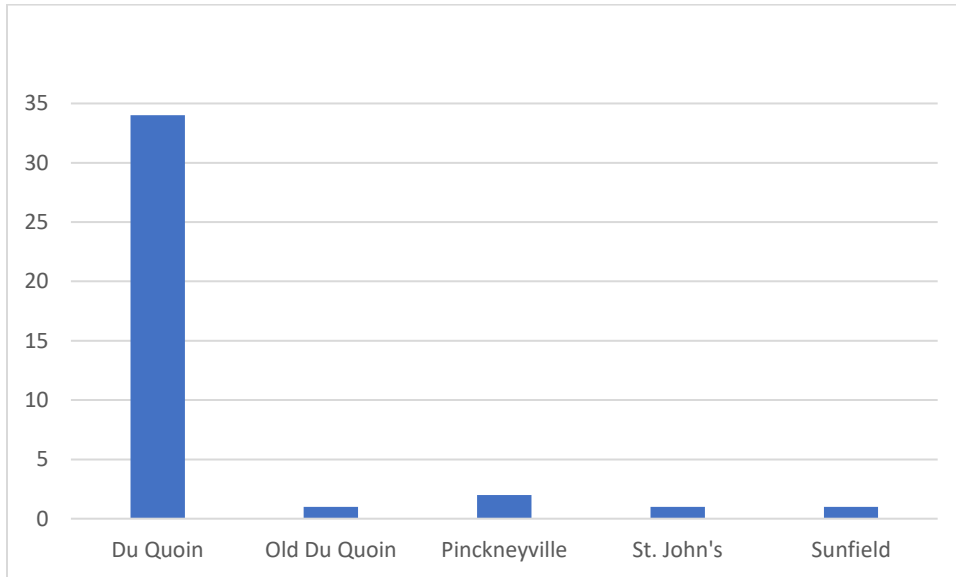
City/Village	Electronic Recycling?	Frequency/Location for Electronics	Clean up/dump days	Frequency/Location for Events
Cutler	No		Yes	Once a year, town cleanup, workers collect items
Du Quion	No		No	
Pinckneyville	No		No	
St. Johns	No		No	
Tamaroa	No		Yes	Once a year or less
Willisville	No		Yes	Yearly event

City/Village	Suggestions	Comments
Cutler		
Du Quion	City would benefit from a couple of city wide clean-up days where citizens can drop off items or have them picked up from the curb. We would need funding for either a haul off company or the landfill fees	
Pinckneyville	Offer recycling more than once per year, provide a drop-off location for electronic recycling	
St. Johns		
Tamaroa		
Willisville		

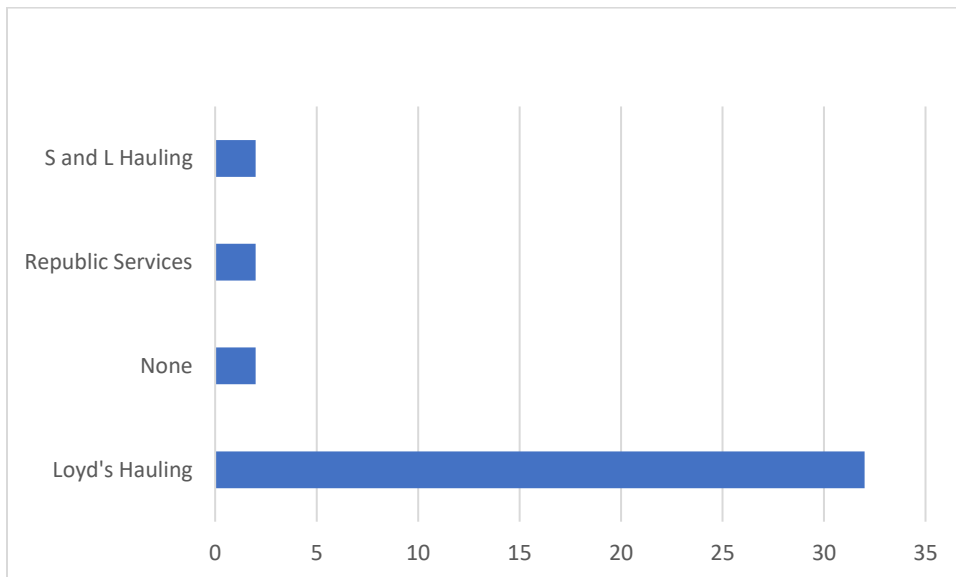
6. Public Survey

Total Responses: 39

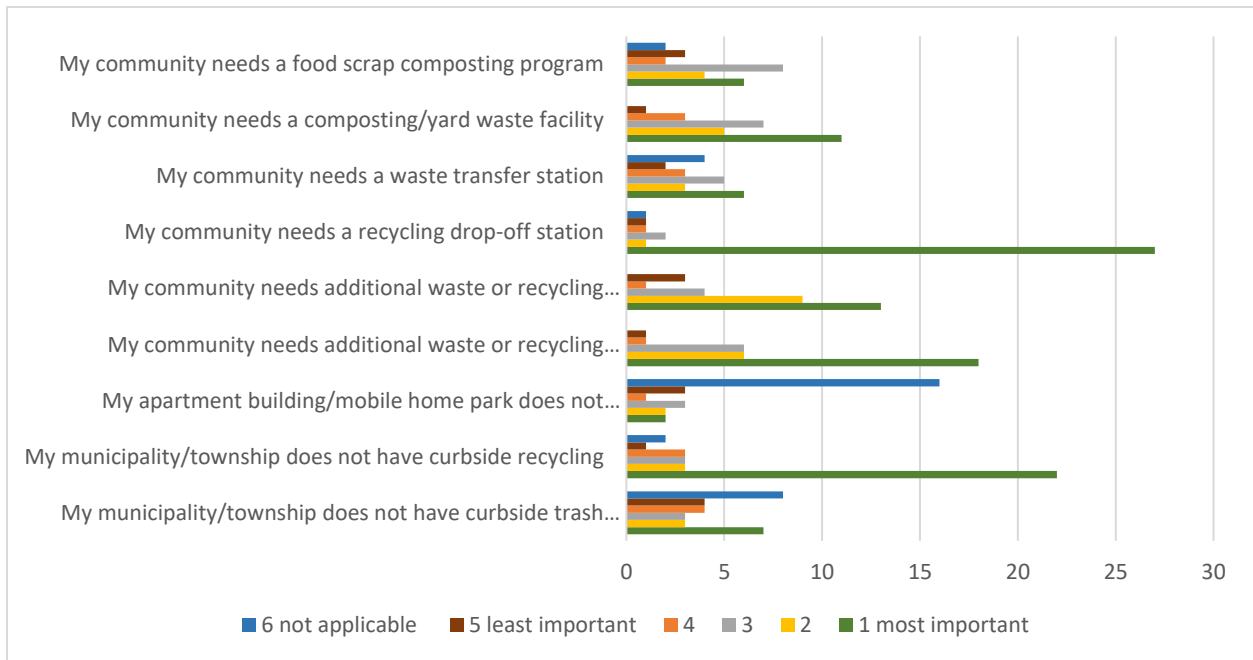
1. What city, village, or township do you live in?



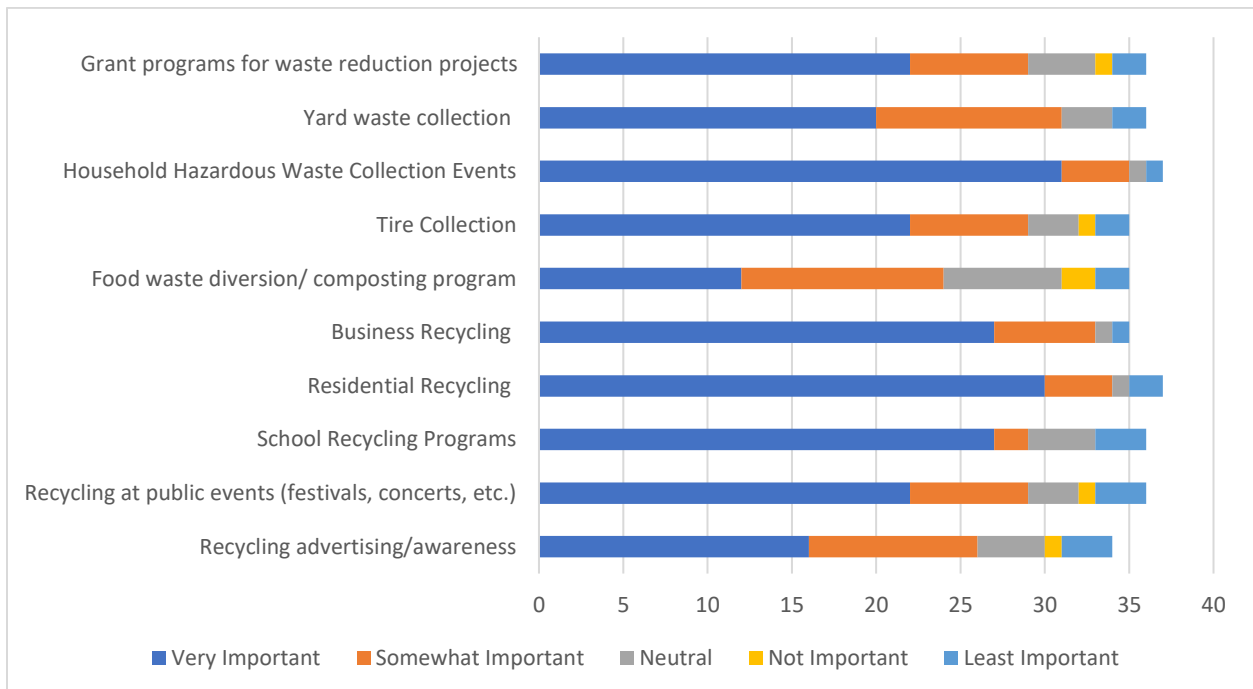
2. Who is your waste hauler?



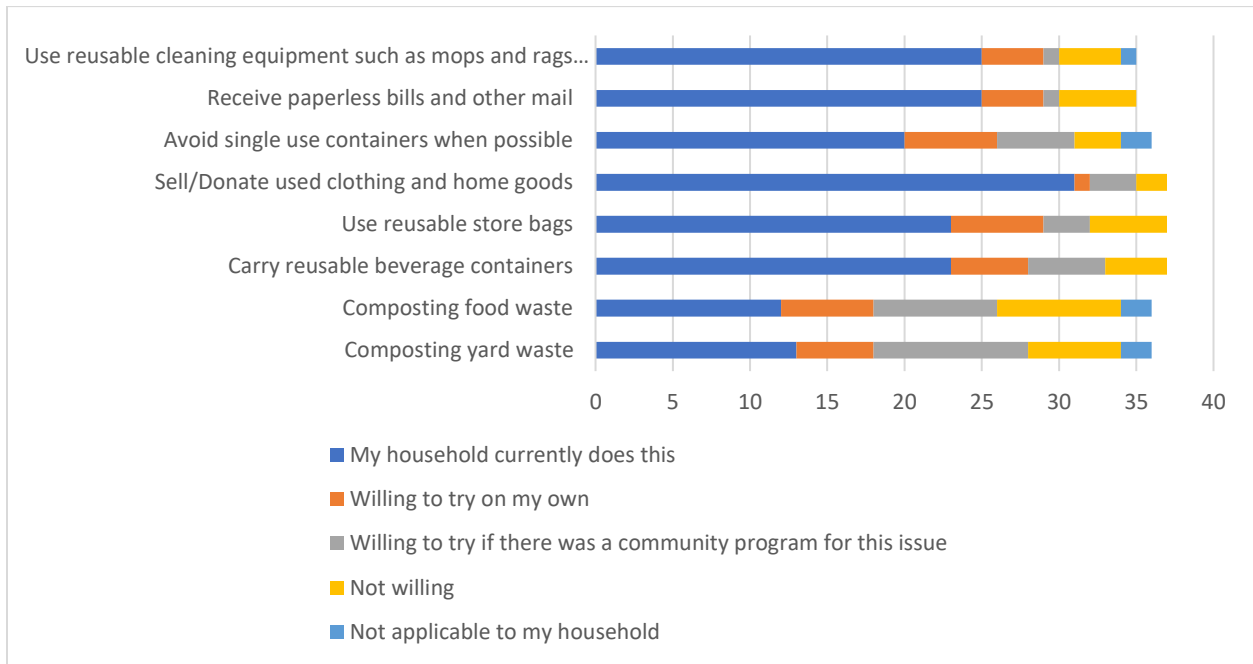
3. What do you see as the biggest waste and recycling issues you face within your community in the next 5 – 20 years? These suggestions will be used to analyze needs and plan for the next 5 – 20 years.



4. In your opinion, what is the importance of the following potential and existing waste management programs in Perry County?



5. How willing would your household be in utilizing any of the following waste reduction techniques?



6. In your opinion, what is the biggest issue regarding solid waste and recycling management in Perry County, IL?

There is no longer a recycling collection point in DuQuoin. The Pinckneyville site is often full.
Cost
No recycling drop off in du Quoin
No recycling in Du Quoin
No public facilities
Facilities, programs and information availability.
Driving across the county to recycle
Not enough availability
I currently have to haul our recycling out of Perry county to drop off
There is only one spot to recycle and it always seems to be full plus it isn't in our town but closer to Pinckneyville
Affordability and access - too many yards gathering trash items they cant afford or sbke to dispose of
Cost & people misusing the current recycling bins
It is not easy to get rid of paint cans, electrical items and anything trash company will not take.
There is no place to get rid of yard waste.

Curbside pickup or more collection bins
Recycling used to have drop off spots outside of town but that has been removed and now it's difficult to get recycling products without paying for a container.
No recycling center
Need recycling bins in town
I live in rural DuQuoin & currently pay Second Cycle to pick up my paper & plastics recycling totes. I don't think enough people realize this is an option.
None
Curbside pickup not offered
Enough containers and locations
Recycling access is limited.
I've utilized Second Cycle since we lost service. Wonderful business . Plastic recycling ends up in landfill anyway. Community should be educated on this.
We have no recycling center close by
Letting other towns dump their waste in Perry county
Not enough areas to recycle and people not following directions.
No public recycling center in DuQuoin like there used to. We now pay a company to collect recycling but would be nice to have a public bin
Large item removal - mattresses
We need our recycling containers back
Cost
Not cost effective
Plastic

7. In your opinion, what is the biggest success regarding solid waste and recycling management in Perry County, IL?

Having it available to begin with is nice.
Seeing it used
Local landfill and local trash company
Local trash company- Loyd is the best
They had a station for years
Free dump day and disposal programs.
At this point I don't see successes
Cuts down on trash
None
Not sure there is one.

Unsure of what has been done
Free dump day
We have good yeah pick up company's and have recycling for those who choose to do it at the Perry Co gov building
There isn't anything available. There used to be a recycling bin center but the ex-mayor discontinued the services.
Current bin is full a lot.
Without curbside recycling or a facility to drop of recycling materials, it is an utter failure.
I love the free dump days for county residents
I think Perry County is legitimately trying to offer recycling drop off facilities but there is a small percentage of the general public that keeps abusing these benefits.
NA
Community clean up days
There is a recycling company that we personally pay to use for residential and commercial use.
Your hazardous waste pick up days.
Bad
That people do use the one area that is available
Local landfill and our trash service does a great job
Recycling option for home pick up
Independent waste management stepping up
None

8. If you have any other ideas, comments, goals or suggestions you would like to see in the Perry County Solid Waste and Recycling Plan OR if you would like to highlight a local recycling hero, please let us know!

A recycling drop-off point in DuQuoin.
Additional recycling/disposal opportunities(i.e. dump day, haz waste drop off, electronics disposal, etc.) and city provided leaf disposal in the fall via vacuum truck. This would improve air quality and could possibly create a future revenue stream by selling leaf mulch.
Second Cycle has been awesome in stepping in where we do not have other options!
Annual or biannual free trash pick up days for city beautification and sanitation
Retail stores should charge for single use bags and you can bring the bags back to use the next time. They do this in CA and CO. The bags are of good quality so several uses are the point.
Betty Mc Cormick Elders is almost 89 years old, lives in Du Quoin, and has always recycled and still recycles everything she possibly can, hauling it wherever she has to in order to do so.
NA

Need yard waste curbside pickup for those who have no way to burn or dispose of
Perry county lacks a solution for yard waste
Really need more tire collection services. Used tires help fuel the mosquito problems we have and it's very difficult to get rid of them. Would be nice to have tire collection that could include commercial tires also (semi, ag tires)
Low income or disabled persons property clean up

7. Hauler Survey

An attempt was made to collect opinions from waste haulers that operate in the southern Illinois region.

List of haulers that were contacted with a request to take the survey (highlighted names indicate a response):

Big Dawg Disposal
Bulldog Waste Services
City of Carbondale
DS Dumpsters Rental, LLC
Ed Burris Disposal Service
Effingham County Transfer Station
Loyd's Hauling
McVicker Excavating
Millstadt Rendering Co
Northwind Dumpster Rentals
Quivey Sanitation, Inc.
Rapid Roll Off
Republic Services
Rural Trash Services, LLC
Second Cycle, LLC
SI Waste Container

Summarized Responses:

What services do you provide?						
Rural Trash Services LLC	Big Dawg Disposal	Quivey Sanitation, Inc.	Republic Services, Inc.	City of Carbondale	Second Cycle, LLC	Services
x		x	x	x		curbside trash hauling
x			x	x	x	curbside recycling
x		x	x	x		commercial trash
x			x		x	commercial recycling
	x	x	x			roll off dumpster rentals
		x	x			contract with cities for curbside program (trash only)
			x			contract with cities for curbside program (trash and recycling)
			x	x		yard waste composting
						food waste composting
						restaurant oil recycling
			x	x		other
If you offer services not listed in the above question, please describe them here:						
			Bulk Item Pickup - customer calls for a one-time pickup for a large item or a larger number of bagged items	yard waste pick up program, leaf vacuum service		

What Counties do you provide services for? Please list all IL counties even if outside of the Greater Egypt region.						
Rural Trash Services LLC	Big Dawg Disposal	Quivey Sanitation, Inc.	Republic Services, Inc.	City of Carbondale	Second Cycle, LLC	Counties
			x			Clay
	x					Clinton
	x		x			Franklin
			x			Gallatin
	x		x			Hamilton
			x			Hardin
x	x	x	x	x	x	Jackson
	x		x			Jefferson
			x			Johnson
	x		x			Marion
			x			Massac
		x				Monroe
x	x		x		x	Perry
			x			Pope
	x	x	x			Randolph
	x		x			Saline
	x					St. Clair
			x		x	Union
	x		x			Washington
	x		x			Wayne
			x			White
	x		x			Williamson

Where do you take the waste that you collect? List all transfer stations and landfills that your company utilizes						
Rural Trash Services LLC	Big Dawg Disposal	Quivey Sanitation, Inc.	Republic Services, Inc.	City of Carbondale	Second Cycle, LLC	Disposal Locations
x	x	x				Perry Ridge Landfill
	x					West End Landfill
			x	x		Southern Illinois Regional Landfill
			x			Herrin Transfer Station
			x			Mt. Vernon Transfer Station

Where do you take the recycling that you collect? List all facilities that your company utilizes						
Rural Trash Services LLC	Big Dawg Disposal	Quivey Sanitation, Inc.	Republic Services, Inc.	City of Carbondale	Second Cycle, LLC	Disposal Locations
x	x			x	x	Southern Recycling (Now CRC recycling)
x						TNT Metal
			x			Herrin Transfer Station
			x			Republic Services Recycling Southside MRF

Where do you take the yard waste that you collect? List all facilities that your company utilizes						
Rural Trash Services LLC	Big Dawg Disposal	Quivey Sanitation, Inc.	Republic Services, Inc.	City of Carbondale	Second Cycle, LLC	Disposal Locations
NA	NA	NA	x	x	NA	New Earth Compost, Carterville

If you offer trash hauling but not recycling, what are the reasons preventing your company from providing this service?					
Rural Trash Services LLC	Big Dawg Disposal	Quivey Sanitation, Inc.	Republic Services, Inc.	City of Carbondale	Second Cycle, LLC
Plastic recycling is limited to only grade 1 and 2	NA	Recycling is expensive to get rid of	NA	NA	NA

What are some issues that your company faces? Check all that apply						
Rural Trash Services LLC	Big Dawg Disposal	Quivey Sanitation, Inc.	Republic Services, Inc.	City of Carbondale	Second Cycle, LLC	Disposal Locations
	x	x	x			Cost of landfill/transfer station disposal
x	x		x			Cost of recycling
						Lack of transfer stations in the southern Illinois area
x						Lack of recycling facilities in the southern Illinois area
x			x	x		Lack of yard waste composting facilities in the southern Illinois area
x			x	x	x	recycling contamination
						loss of customers
	x			x		difficult to hire and/or retain staff
x						rural areas difficult to service
				personnel and mechanical issues		other (explain)

If food waste composting was an option in southern Illinois, is this a service your company could provide hauling for?						
Rural Trash Services LLC	Big Dawg Disposal	Quivey Sanitation, Inc.	Republic Services, Inc.	City of Carbondale	Second Cycle, LLC	
					x	Yes
x		x		x		No
	x		x			Unsure at this time

8. Management Strategies

Note this section contains all management strategies suggested for the Greater Egypt Region (Franklin, Jefferson, Jackson, Perry, and Williamson Counties) since any upgrades to the waste & recycling industry in any county will benefit the entire region.

Table 19 - Solid Waste and Recycling Management Strategies, Equipment Needs, and Project Ideas

Strategy	Details/comments and potential benefits	Proposed by	Implementation Timeframe	Cost Estimate	Potential funding source
Curbside recycling program	Curbside recycling is the most effective way to increase recycling and divert waste from landfills, however this is also a costly service that would likely have to be added to residents' bills. Many municipalities do not want to raise rates for their residents and have opted not to have this service, even if their contracted hauler offers it. Contamination is still an issue in curbside programs, but it is easier to manage than drop-off sites.	multiple municipalities	1-20 years. Services are already available from multiple haulers, up to each city/village to implement a program.	Contract varies depending on hauling company and size of municipality.	Curbside recycling is largely up to the municipality and hauling company that they contract with. Some haulers do not have the proper equipment to offer recycling as part of their services. Haulers that do offer curbside recycling usually charge an additional fee for the service, that would have to either be paid by the municipality or passed on to residents as a part of their trash bill.
Recycling drop-off bins	While many members of the public have interest in more recycling stations, most municipalities have stated they are not effective. Unstaffed drop-off sites become filled with bag contamination, unrecyclable trash, and large dumped items. It becomes a large burden on the agency managing the site to sort out the trash. For drop-off stations to be a viable solution to increase recycling, they need to be staffed or have security cameras in place with a system to enforce the rules, which adds additional costs.	multiple municipalities, public surveys	1-20 years. Services are already available from multiple haulers, up to each city/village to implement a program.	Green compartment trailers- \$20,000 each, Cardboard cage trailer- \$5,000, trailer maintenance, staff time, and dumping cost per year- \$20,000 per site. Some haulers own trailers that municipalities can pay for as a part of their waste contract and is maintained by the company, the fee for this service varies by contract but is around \$500/month.	EPA Solid Waste Infrastructure for Recycling Grants for Communities, Drop-off Recycling Program Grant
More frequent dumping of current recycle stations	A frequent complaint in the public surveys is that current recycle drop-off stations are not emptied frequently enough. Bins are often full and overflowing and people spend time loading their recyclables and driving to the site, only to be unable to get rid of their items.	public surveys	1-20 years.	Depending on the hauler and contract, the cost to maintain a recycling drop off sites ranges from \$400-1,7000 per month, adding additional days to empty the bins would raise this cost.	Increase resident trash/recycle bills, budget from municipal funds in other ways, grant programs

Strategy	Details/comments and potential benefits	Proposed by	Implementation Timeframe	Cost Estimate	Potential funding source
More electronics recycling events	Multiple cities as well as comments from the public surveys have shown there is community interest in recycling more electronics. There are few places that take these items and cost varies.	multiple municipalities, Support from CRC Southern Recycling	1-20 years	Cost would vary by amount of electronics recycled. CRC is interested in helping communities set up drives, they would be able to offer quotes on the price. There may also be future opportunities from electronics manufacturers in accordance with the Consumer Electronics Recycling Act.	Depending on who coordinates the drive, funding could come from manufacturers, donations, grants, or municipal funds.
More household hazardous waste events	Currently, the southern Illinois region only has one annual household hazardous material pickup event, sponsored by the Jackson County Health Department and IEPA. It is hugely popular but can be difficult for some people to attend.	Municipal & public surveys	1-20 years. JCHD has procured funds to host two events in 2024 – November and June.	Cost to host a single day event is around \$60,000-\$70,000 if self-funded. To host an event, interested parties can also apply to IEPA and they fund it if selected	County funds, grants, IEPA JCHD typically is able to host events with funds generated from landfill tipping fees that go into the county solid waste fund
More opportunities for lightbulb recycling	Currently there are only locations that recycle CFL bulbs and holiday lights. There are no options for incandescent, florescent, or LED lights in the region. Typically, only lights that contain mercury are recycled for environmental health reasons. It may not be cost effective to recycle other bulb types, but having more locations to recycle mercury-containing bulbs would be beneficial.	Mt. Vernon	1-20 years	Variable depending on scale of program and end location of bulbs. (collection and shipping costs)	Grants, partnership with electric providers
Education/Outreach campaign to raise awareness on recycling contamination & other local issues	Every entity that is a part of the recycling industry, from haulers to municipalities to have stated that recycling contamination is a huge issue. Materials have to be loose to be sorted at recycling processing centers. Items in bags significantly increase staff time on the sorting lines, bags and other unwanted items can clog machinery and create other problems. Other contaminants reported at drop off sites have ranged from household waste to cat litter and dumped furniture. Staff time and landfill fees to sort these items can also be significant. Several entities have expressed interest in education programs to try and alert the public of this issue and increase proper use of recycling services	JCHD	1-3 years. JCHD intends to apply for funds for various outreach campaigns in the next few years	Funds needed to be determined. Likely \$100,000-500,000.	Consumer Recycling Education and Outreach Grant Program
Create a food waste composting program in southern Illinois	There is a growing interest in food waste composting in the area, a possible location would be in the Carbondale area of Jackson County. There is some interest from the City depending on feasibility and cost-effectiveness	JCHD, public surveys, Food Recovery & Waste Reduction Initiative	1-20 years	Cost estimate unknown, a feasibility study would likely have to take place before any programs are set up. These studies are typically \$150,000 or less.	Economic development grants may fund such a project if it creates new jobs in the region

Strategy	Details/comments and potential benefits	Proposed by	Implementation Timeframe	Cost Estimate	Potential funding source
Property clean-up assistance for elderly/disabled residents	Some residents may not be physically able to remove large items from their homes or property. It was suggested to set up some sort of program for residents to be able to register for assistance to participate in community clean up days	public comment	1-20 years	Cost would vary by	Could potentially be part of the public works budget, funded through refuse/recycling fees. Grant program may cover startup costs of such a program
City clean up days for municipalities that do not currently host such an event	Bulk item pickup and community dump events are both largely popular in areas that currently have them. It prevents illegal dumping and junk buildup in yards by providing residents with a free way to get rid of unwanted items.	municipal surveys	1-20 years	would vary based on size of community and amount of waste collected	County or municipal funds, donations or sponsorship
Yard Waste collection programs for municipalities that do not currently have one	Lack of yard waste collection programs or dump sites has been mentioned. Feasibility of implementing a program depends on whether the community has a municipal burning location, or if New Earth Compost would accept additional contracts.	public surveys, municipal surveys	1-20 years	Varies by community size. New Earth Compost typically charges by the truckload, but municipal contracts may be different. Piling and burning by city staff would depend on staff needed and their rates of pay.	County or municipal funds, donations or sponsorship
Municipal or county yard waste collection sites	There has been some interest in county or local compost sites for yard waste where residents can drive up and dump their yard waste at a central location, and be able to take or purchase compost later.	public surveys, meeting comments	1-20 years	Cost will vary by area needed, permit types, and equipment needed. Feasibility study would likely have to be [performed first. These studies are typically \$150,000 or less.	County or municipal funds, grant for initial startup costs may be possible
Tire collection events	Old tires are a large problem in both rural and urban areas. They are often dumped illegally, or left sitting in yards. Their ability to hold water for breeding mosquitos also make tire waste a public health concern.	public comments, municipal surveys	1-20 years	Collection & disposal costs vary by size of tire and disposal facility fees. Regular vehicle tires typically cost \$2-7 per tire to recycle. Currently, Midwest Tire Disposal in Benton is the only facility in the region that accepts tires	Sponsorships from local tire companies or dealerships, county or municipal funds, possibly a grant for one-time events
New tire recycling center in Jackson County	The abundance of tires in southern Illinois is a widely documented problem. A new facility to accept and process them may eliminate the issues of illegal dumping of tires and tires being left outside for long periods to collect water and allow for mosquito breeding.	City of Murphysboro	5-20 years	Variable depending on size of facility, but likely in the hundreds of thousands to millions of dollars in construction.	Economic development grants, or funded by private company if one chooses to build a new facility

Strategy	Details/comments and potential benefits	Proposed by	Implementation Timeframe	Cost Estimate	Potential funding source
Incentives against using single use plastic & Styrofoam retail stores and restaurants	Multiple comments have expressed concern about single use plastics from retails and the need to reduce this waste. Some states and cities around the country have enacted bans and fees against single use plastic bags and other items. The feasibility of a similar ban in southern Illinois could be explored.	public surveys	1-20 years	This would likely be an ordinance or code enacted by county boards and/or city councils. Would probably not have a direct cost on the community.	NA
Programs to reduce illegal dumping in rural and urban areas	Multiple comments during meetings and from surveys have expressed concerns with illegal dump sites, especially along roads and waterways. With the large amount of unpatrolled rural roads, the feasibility of catching dumpers in the act is not a realistic solution. However, offering more community dump day events may eliminate some of the activity.	Public surveys, meeting comments	1-20 years	would vary based on size of community and amount of waste collected	County or municipal funds, donations or sponsorship
Trash & Recycling cans downtown and in public parks	Many towns in the region do not have waste containers in town or in parks. This could help eliminate some of the littering problem. However, the downside to large outdoor trash cans is that some people may use them to dump their own household waste. Anecdotes from some parks and recreation staff have stated that as a problem in some areas.	surveys	1-20 years	Depends on # of containers needed and staff time to empty them. Permanent outdoor receptacles cost around \$400-1,000 each depending on design and brand.	city budgets, grant programs
Community reuse center	Suggestions from planning team members in meetings have brought up the idea of a community center to share reusable goods such as furniture, paints, tools, and other items. There are already several thrift stores around southern Illinois, and paint swaps have occurred in the past. Logistics and ownership of a new facility have not been discussed in detail.	Meeting comments	1-20 years	Varies on size and location of such a facility. A brand new construction project could be millions of dollars, upgrading an existing thrift store or other business would be significantly less.	This would likely be a collaboration of government funds, non-profit organization funds or volunteer hours, donations, and grants
Paint recycling events	There is a paint factory in Nashville, IL (GBD International) that does recycling. They do not currently have a public program; it has been suggested to reach out to them and see if a community partnership would be possible in the future.	Perry County	1-20 years	Would have to get quotes from company if they agree to host events	County or municipal funds, possibly a sponsorship or donation
Improvements to CRC recycling facility	CRC would like to add various equipment to increase their in-house processing capabilities: shredder and granulator for rigid plastics, EPS densifier for Styrofoam. They would like to add areas for the public to drop off plastic bags and PVC vinyl siding for recycling. CRC is searching for ways to help communities host electronics drives. The company is also looking for solutions to improve business relations with other local recycling centers and increase cost savings for all parties.	CRC Southern Recycling	1-20 years	Processing equipment would have to be estimated from a contractor/engineer. Costs depend on size and capacity of equipment needed.	The Recycling Partnership Grants for Processors/Materials Recovery Facilities (MRF), Illinois CDBG, DRA SEDAP

Strategy	Details/comments and potential benefits	Proposed by	Implementation Timeframe	Cost Estimate	Potential funding source
Improvements to Progress Port recycling facility	Progress port needs additional trailers to increase their capacity to provide recycling for businesses in the community. They would like the opportunity to recycle electronics as well as plastics 3-7 but there is currently nowhere to take that material. They would like additional funds to cover the costs of glass recycling and the cost of gaylords for paper recycling.	Progress Port	1-20 years	Cost to purchase a trailer and modify it for recycling is around \$4-6,000 per trailer	The Recycling Partnership Grants for Processors/Materials Recovery Facilities (MRF), Illinois CDBG, DRA SEDAP
Improvements to Do Your Part Recycling Facility	Do Your Part would like grant funds to hire and retain workers. Equipment needed: a new baler to bale cardboard and plastic, funds to repair or replace aging forklift, an enclosed trailer or box truck for hauling metal. An awning/overhang is needed to store materials before they are shipped out. With this equipment, Do Your Part Recycling would be able to implement residential hauling services to their business to increase their capacity to make a profit and retain staff without the need for continued grants. Currently Do Your Part does not accept glass to recycle because the company they took it to stopped operating. They are considering accepting glass again if they can take it to CRC with other materials, equipment needed for this to be possible is an industrial glass crusher that can break the glass and convey it to safe storage until shipment.	Do Your Part Recycling	1-20 years	Box truck cost ranges from \$30-80,000 depending on size and condition. New cardboard balers range from \$17-25,000. Forklift prices range depending on payload capacity, may be up to \$50,000. Glass crusher costs would depend on vendor and machine capacity.	The Recycling Partnership Grants for Processors/Materials Recovery Facilities (MRF), Illinois CDBG, DRA SEDAP

9. Funding Opportunities

The following table shows potential funding opportunities for waste, recycling, infrastructure, and economic development projects. Note this list may not contain every possible grant available, and funding opportunities change from year to year. It is always good practice to do your own research on a specific project before choosing a grant program.

Table 20

Granting Agency	Program Name	Details	Link
US EPA	Solid Waste Infrastructure for Recycling Grants for Communities	Establish or expand infrastructure, capacity, or end-use market for recyclable materials	https://www.epa.gov/infrastructure/solid-waste-infrastructure-recycling-grants-communities
US EPA	Consumer Recycling Education and Outreach Grant Program	inform the public about recycling/composting programs, increase collection rates, decrease contamination	https://www.epa.gov/infrastructure/consumer-recycling-education-and-outreach-grant-program
The Recycling Partnership	Residential Drop-Off Recycling Grant Program	To develop and improve facilities and signage at drop off recycling sites	https://recyclingpartnership.org/drop-off-recycling-program-grant/
The Recycling Partnership	Residential Curbside Recycling Cart Grant	To advance recycling in communities through the implementation of cart-based curbside recycling	https://recyclingpartnership.org/recycling-cart-grant/
The Recycling Partnership	Grants for Processors/Materials Recovery Facilities (MRF)	Grants for general MRF assistance, and various material-specific grants	https://recyclingpartnership.org/grants/
Illinois DCEO	Community Development Block Grants (CDBG)	Economic development grant, funds a wide range of projects that create and retain jobs in Illinois	https://dceo.illinois.gov/communitydevelopment/cdbg_programs.html
Delta Regional Authority	States' Economic Development Assistance Program (SEDAP)	SEDAP provides direct investments for basic public infrastructure, transportation infrastructure, business development with an emphasis on entrepreneurship, and workforce development.	https://dra.gov/programs/critical-infrastructure/sedap/
USDA	Composting and Food Waste Reduction Cooperative Agreements	assist local and municipal governments with projects that develop and test strategies for planning and implementing municipal compost plans and food waste reduction plans.	https://www.usda.gov/topics/urban/coop-agreements

Appendix 1 – Notice of Planning

The following notice of planning was published in Perry County Newspapers in May 2024:

“Perry County is updating its County Solid Waste and Recycling Plan. This update is required by the State of Illinois. Solid waste planning is designed to describe the type and amount of waste in a county, evaluate processes, and propose management measures related to solid waste and recycling.

The county will be working with the Greater Egypt Regional Planning and Development Commission to create the plan. This will include current and future solid waste and recycling information. A public, informational meeting will occur during the planning process.

For more information, visit greateregyp.org/solid-waste-planning.”

Weekly-Press
P.O. Box 411
Du Quoin, IL 62832
+1 618-357-6397
news@pinckneyvillepress.com or
dqweeklynews@gmail.com

WEEKLY-Press
Perry County's News Source. Locally Owned. Locally Staffed.

INVOICE

BILL TO
Greater Egypt Regional Planning Development Commission

DATE
05/24/2024

TERMS
Net 30

Please refer to the contract with your partner.

DATE	ACTIVITY	DESCRIPTION	QTY	RATE	AMOUNT
05/22/2024	Advertising	3x5 Ad for Perry County Solid Waste & Recycling Management Planning Public Survey Notice	1	120.00	120.00

Thank you for your business. If you would like to pay with a credit or debit card by phone call 618-357-6397 or at our office at 104 E. Main St. Du Quoin, IL. 62832 We appreciate your business!

BALANCE DUE \$120.00

Please Make Checks Payable To Weekly-Press. Credit or Debit Card Payments Can Be Made Over The Phone By Calling 618-357-6397 or at our office at 104 E. Main St. Du Quoin, IL. 62832
Page 1 of 1

Appendix 2 – Meeting Agenda and Minutes

Meeting 1 – 6/13/2023

**Perry County Solid Waste and Recycling Plan
Meeting 1
June 13, 2023
10:00 AM**

**Perry County Government Building
3764 State Route 13-127, Conference Room
Pinckneyville, IL 62274**

AGENDA

- 
- 1.) Welcome and Introductions
 - 2.) Illinois Solid Waste and Recycling Act – Purpose and Requirements
 - 3.) IEPA Grant Information
 - 4.) Planning Process & Timeline
 - 5.) Advisory Committee
 - 6.) Adjourn

Greater Egypt Regional Planning and Development Commission
3117 Civic Circle Boulevard, Suite A
Marion, IL 62959 (618) 997-9351

Perry County Solid Waste and Recycling Plan - Minutes

June 13, 2023 10:00AM

Perry County Government Building, 3764 State Route 13-127, Conference Room, Pinckneyville, IL

In attendance

Ruth Hawkins, Trustee, The Village of St, Johns

Becky Tracy, Solid Waste Manager, Perry County

Staff Present

Kelsey Bowe, *Environmental Planner*

Tyler Carpenter, *GIS and Environmental Planning Director*

Tyler Carpenter with Greater Egypt opened the meeting with introductions of staff and attendees. A review of the Solid Waste and Recycling Act occurred which detailed the purpose and requirements for both solid waste and recycling. Staff reviewed the grant application process and funding for the plan.

The planning process was detailed which included partnerships, information requests, plan narrative, GIS/mapping, and meetings. While Greater Egypt will take the planning lead for the project, the agency will act in conjunction with the Perry County Solid Waste Manager. Participation in the plan will be needed by the communities in the county. Since some may not be able to attend meetings, a small questionnaire will be sent to allow them to be eligible for the plan. The Advisory Committee will be formed in the near future to provide input and progress plan development.

Plan narrative will be based on information retrieved and findings from potential analyses. Greater Egypt also plans to develop an interactive map to allow the public to easily locate waste/recycling centers and other information.

Along with Advisory Committee meetings, staff will hold at least one public meeting. This will likely include maps, figures, and a presentation.

Staff reviewed the timeline for the project. With the extended grant, the goal is to complete the plan in April 2024. Staff also detailed: public notice of planning start, advisory committee details, review and adoption, next steps and future planning.

Meeting adjourned.

Greater Egypt Regional Planning and Development Commission
3117 Civic Circle Boulevard, Suite A
Marion, IL 62959 (618) 997-9351

**Perry County Solid Waste and Recycling Plan
Meeting 2
January 23, 2024
10:00 AM**

Virtual Meeting – ZOOM
[LINK \(Click\)](#)

AGENDA

- 1.) Welcome and Introductions
 - 2.) Review - Illinois Solid Waste and Recycling Act
 - 3.) Review - IEPA Solid Waste Grant
 - 4.) Planning Process
 - a. Advisory Committee
 - b. Municipal Participation
 - c. Priors Plans
 - 5.) Current Planning
 - a. Waste Generation/ Composition
 - b. Infrastructure
 - c. Materials/ Management
 - 6.) Timeline and Future Meeting(s)
 - 7.) Adjourn
- 

Greater Egypt Regional Planning and Development Commission
3117 Civic Circle Boulevard, Suite A
Marion, IL 62959 (618) 997-9351



Perry County Solid Waste and Recycling Plan – Meeting Three Minutes

January 25, 2024 10:00AM

Virtual (Zoom)

In attendance

1

Staff Present

2

Tyler Carpenter (Greater Egypt) opened the meeting with introductions of staff and attendees. Staff reviewed the planning completed since the last meeting in June.

Staff reviewed participation from communities in Perry County. From the returned forms, there are needs in communities for recycling and waste opportunities. Results will be detailed in the plan. There is also interest in electronic recycling events.

Staff reviewed the planning process and the plan outline. This will include an Intro and County background, Regional Plan Updates, Waste Generation and Composition, Materials Management, Public Education and Outreach, and Management Recommendations. Staff reviewed the current planning data and regional mapping tool.

Staff reviewed the public education and outreach component needed for the plan. This will include information and messaging, public meetings, waste pickup events and a residential survey during the planning process. Management measures were also discussed. These will be needed from the communities. Prior planning recommendations were presented. The timeline for the remaining planning timeline was presented.

Meeting adjourned.

Greater Egypt Regional Planning and Development Commission
3117 Civic Circle Boulevard, Suite A
Marion, IL 62959 (618) 997-9351

**Perry County Solid Waste and Recycling Plan
Meeting 3
August 27, 2024
10:00 AM**

**Virtual Meeting – ZOOM
[LINK \(Click\)](#)**

AGENDA

- 1.) Welcome and Introductions
- 2.) Planning Review
 - a. Meetings
 - b. Advisory Committee
 - c. Municipal Participation
- 3.) Survey Responses
 - a. Public
 - b. Hauler
- 4.) Public Education and Outreach
- 5.) Management Measures
- 6.) Remaining Schedule and Tasks
- 7.) Comments and Questions
- 8.) Adjourn

Greater Egypt Regional Planning and Development Commission
3117 Civic Circle Boulevard, Suite A
Marion, IL 62959 (618) 997-9351



Perry County Solid Waste and Recycling Plan – Meeting Four Minutes

August 27, 2024 10:00AM

Virtual (Zoom)

In attendance

2

Staff Present

2

Tyler Carpenter (Greater Egypt) opened the meeting with introductions of staff and attendees. Staff reviewed the planning completed since the last meeting in early 2024. Staff reviewed participation from communities in the county. The remaining municipalities will be contacted to meet the participation requirement.

Staff reviewed the Public and Hauler Surveys. Most respondents were from the City of Du Quoin. Lloyd's Hauling is the hauler for most of the respondents. The most important waste and recycling issues mentioned were: needing a compost/yard waste facility, more recycling bins in areas, community needs a recycling drop off location and municipality needs a curbside recycling program. The needs for more recycling and waste options is a large concern for residents.

Four businesses replied to the hauler survey. Most of them operate beyond Perry County. Republic Services offer most services in the area including commercial trash and recycling. Hauler responses were reviewed and will be detailed in the plan.

Staff reviewed the public education and outreach component needed for the plan. This will include information and messaging, public meetings, waste pickup events and a residential survey during the planning process. Management measures were also discussed. These will be needed from the communities and Advisory Committee. The remaining planning timeline was presented.

Meeting adjourned.

Greater Egypt Regional Planning and Development Commission
3117 Civic Circle Boulevard, Suite A
Marion, IL 62959 (618) 997-9351

Appendix 3 – Public Survey Flyers and Publication

Pinckneyville Press – 5/22/24:

Page 7 Weekly - Press Wednesday, May 22, 2024

Rep. Friess Holds Shred Event in Pinckneyville



On May 11, Rep. Friess held a shred event in Pinckneyville at the Perry County Fairgrounds. Above: This was a drive-up event where residents dropped off their cop...

Perry County Solid Waste & Recycling Management Planning Public Survey Notice

Greater Egypt Regional Planning and Development Commission and Perry County are working to update the Solid Waste & Recycling Plan in accordance with 415 ILCS 12 and 15

We want to hear from you!

To learn more and to take the public survey for your county, scan the code below or visit <https://greateregypt.org/solid-waste-planning/>

English Version:	Versión en Español:
	

Du Quoin American Legion
Roy Mitchell Post 647

Flyer posted at recycling drop off and city halls:

Public Survey Alert!

A LEGO-style illustration of a recycling truck with a recycling symbol on its side. Next to it are three recycling bins (green, blue, and red) with a person and a dog nearby. A speech bubble from the person says "We want to hear from you!".

We want to hear from you!

Perry County encourages community input on our update to the County Solid Waste & Recycling Management Plan

Scan the codes below to take the survey

Thank you for participating!

English Version:

Versión en Español:

This Plan will be updated in accordance with 415 ILCS 12 (Solid Waste Hauling and Recycling Program Act) and 415 ILCS 15 (Solid Waste Planning and Recycling Act). This project has been fully funded through the Illinois Environmental Protection Agency (IEPA) Solid Waste Planning Grant Program.

Three logos are displayed in a row: the Perry County logo (founded 1821), the Greater Keokuk logo, and the Illinois Environmental Protection Agency logo.

Appendix 4 – Public Comment Period

The following notice was published in the Pinckneyville Press the week of October 23, 2024:

“Public Comment Period Notice: Perry County Solid Waste and Recycling Management Plan

To meet the requirements of the Illinois Solid Waste Planning and Recycling Act (415 ILCS15) Greater Egypt Regional Planning and Development Commission and Perry County have prepared an update to the Perry County Solid Waste and Recycling Management Plan.

The Public Comment Period will be from October 21, 2024 – January 21, 2025. The Plan draft will be available for review online at <https://greateregypt.org/solid-waste-planning/> and in person at the Pinckneyville Community Center, 203 North Walnut Street, Pinckneyville, IL 62274”

There were no comments received during this period.



Greater Egypt Regional Planning and Development Commission ...
November 2, 2024 · 🌐

The Solid Waste and Recycling Management Plan Drafts for Jackson, Perry, and the Tri-Counties (Franklin, Jefferson, Williamson) are now available for public review and comments at <https://greateregypt.org/solid-waste-planning/>

The comment period will be open until January 23, 2025. If you would like to review the draft in person and provide written comments, you may do so at the following locations:

- Jackson County Health Department rear building, 415 Health Dept Road. Murphysboro, IL 62966
- Pinckneyville Community Center, 203 North Walnut Street, Pinckneyville, IL 62274
- Jefferson County Health Department, 4102 S Water Tower Place, Mt. Vernon, IL 62864
- Franklin County Courthouse, 100 Public Square, Benton, IL 62812
- Williamson County Administration Building, 407 N Monroe St., Marion, IL 62959

The following Public Hearing notice was published in the Pinckneyville Press the week of November 27, 2024:

"A public hearing regarding the draft of the Perry County Solid Waste and Recycling Management Plan will be held on Wednesday December 4, from 10-11AM at the Pinckneyville Community Center, 203 N Walnut St., Pinckneyville, IL62274. Comments regarding the plan can also be placed online at <https://greateregypt.org/solid-waste-planning/> "

It was also posted on the Greater Egypt Facebook page (below)

No public comments were received during the hearing.



Greater Egypt Regional Planning and Development Commission
December 3, 2024 · 🌐

🔊🗣️ Public Hearing Notice! There are upcoming public hearings regarding each Solid Waste and Recycling Management Plan in the Greater Egypt region. If you have comments or questions about your County's Plan, please attend:

Jackson County: December 3rd 4-6PM
📍 Jackson County Health Department Rear Building
415 Health Dept Rd, Murphysboro, IL 62966

Perry County: December 4th 10-11AM
📍 Pinckneyville Community Center, 203 N Walnut St.
Pinckneyville, IL 62274

Tri-County (Franklin, Jefferson, Williamson): 10-11:30AM
📍 Greater Egypt Regional Planning and Development Commission
3117 Civic Circle Blvd, Suite A
Marion, IL 62959

Can't make it but want to provide input? Comments will also be accepted online until January 23rd at

 GREATEREGYPT.ORG
Solid Waste Planning - Greater Egypt
Under the Illinois Solid Waste and Recycling Act (SWPRA), Illinois counties are required to create a County Solid Waste Plan every five years. These plans are required to include: A...