

# Jackson County Solid Waste and Recycling Management Plan



## Jackson County Solid Waste and Recycling Management Plan

Prepared by Greater Egypt Regional Planning and Development Commission

Lilly Bolin – Environmental Planner

Kelsey Bowe – Environmental Planning Coordinator

Nick Keller – Environmental Planner

Tyler Carpenter – Environmental Planning & GIS Director

This report constitutes the Solid Waste Management Plan Update as required by the Solid Waste Planning & Recycling Act (415 ILCS 15)

Primary County Contacts for plan implementation:

Kerri Gale, Environmental Health Director, Jackson County Health Department

[kerrig@jchdonline.org](mailto:kerrig@jchdonline.org) 618-684-3143

Angie Kuehl, Recycling Program Coordinator, Jackson County Health Department

[angiek@jchdonline.org](mailto:angiek@jchdonline.org) 618-684-3143

*This project was fully funded through an Illinois Environmental Protection Agency (IEPA)  
County Solid Waste Planning Grant*

## Table of Contents

1. Introduction & Planning Process	1
1.1. County Background	1
1.2. Planning Process	5
2. Illinois Legislation	8
2.1. Established State Laws	8
2.2. Recent Changes	11
2.3. Jackson County Waste Management Ordinance	12
3. Waste Generation and Composition	13
3.1. Waste Generation	13
3.2. Waste Composition	15
3.3. School Recycling Data	17
4. Materials Management	18
4.1. Landfills	19
4.2. Recycling	22
4.3. Recycling Contamination	23
4.4. Tables of Regional Facilities	24
4.5. Special Collection Events	32
5. Hauler Survey	35
6. Municipal Surveys	41
7. Public Survey	47
8. Community Group Survey	70
9. Management Strategies	83
10. Funding Opportunities	88
11. Appendix 1 – Notice of Planning	89
12. Appendix 2 – Meeting Agendas and Minutes	91
13. Appendix 3 – Survey flyers and other event publications	100
14. Appendix 4 – Public Comment Period	105
15. Appendix 5 – Jackson County Solid Waste Management Ordinance	107

# 1. Introduction & Planning Process

## 1.1. County Background

Based on the 2020 decennial census, Jackson County has 52, 974 residents. This was a 12% decrease from the 2010 population of 60, 218. Populations of cities and villages within the county are in the table below. Jackson county is largely rural, with development centered around IL-13, IL-51, and IL-127. Carbondale is the largest city in the county. Figures 1 and 2 show maps of the planning area and landcover types.

Table 1 - Municipal Populations

Municipality	Population
Ava	553
Campbell Hill	309
Carbondale	21857
Desoto	1407
Dowell	368
Elkville	838
Gorham	173
Grand Tower	479
Makanda	547
Murphysboro	7093
Vergennes	235

Source: 2020 Decennial Census

Table 2 - Major Industries in Jackson County

<b>Industry</b>	<b># Employees</b>
<b>Educational Services</b>	6,769
<b>Health Care and Social Assistance</b>	4,620
<b>Retail Trade</b>	2,910
<b>Accommodation and Food Services</b>	2,282
<b>Construction</b>	1,286
<b>Public Administration</b>	1,270
<b>Manufacturing</b>	1,176
<b>Other Services (except Public Administration)</b>	1,118
<b>Finance and Insurance</b>	730
<b>Administrative and Support and Waste Management and Remediation Services</b>	690
<b>Professional, Scientific, and Technical Services</b>	617
<b>Transportation and Warehousing</b>	577
<b>Mining, Quarrying, and Oil and Gas Extraction</b>	455
<b>Management of Companies and Enterprises</b>	450
<b>Agriculture, Forestry, Fishing and Hunting</b>	433
<b>Real Estate and Rental and Leasing</b>	339
<b>Wholesale Trade</b>	282
<b>Arts, Entertainment, and Recreation</b>	266
<b>Information</b>	131
<b>Utilities</b>	103
<b>Unclassified</b>	14
<b>Total - All Industries</b>	26,518

Source: Jobs EQ, Q1 2023

Figure 1

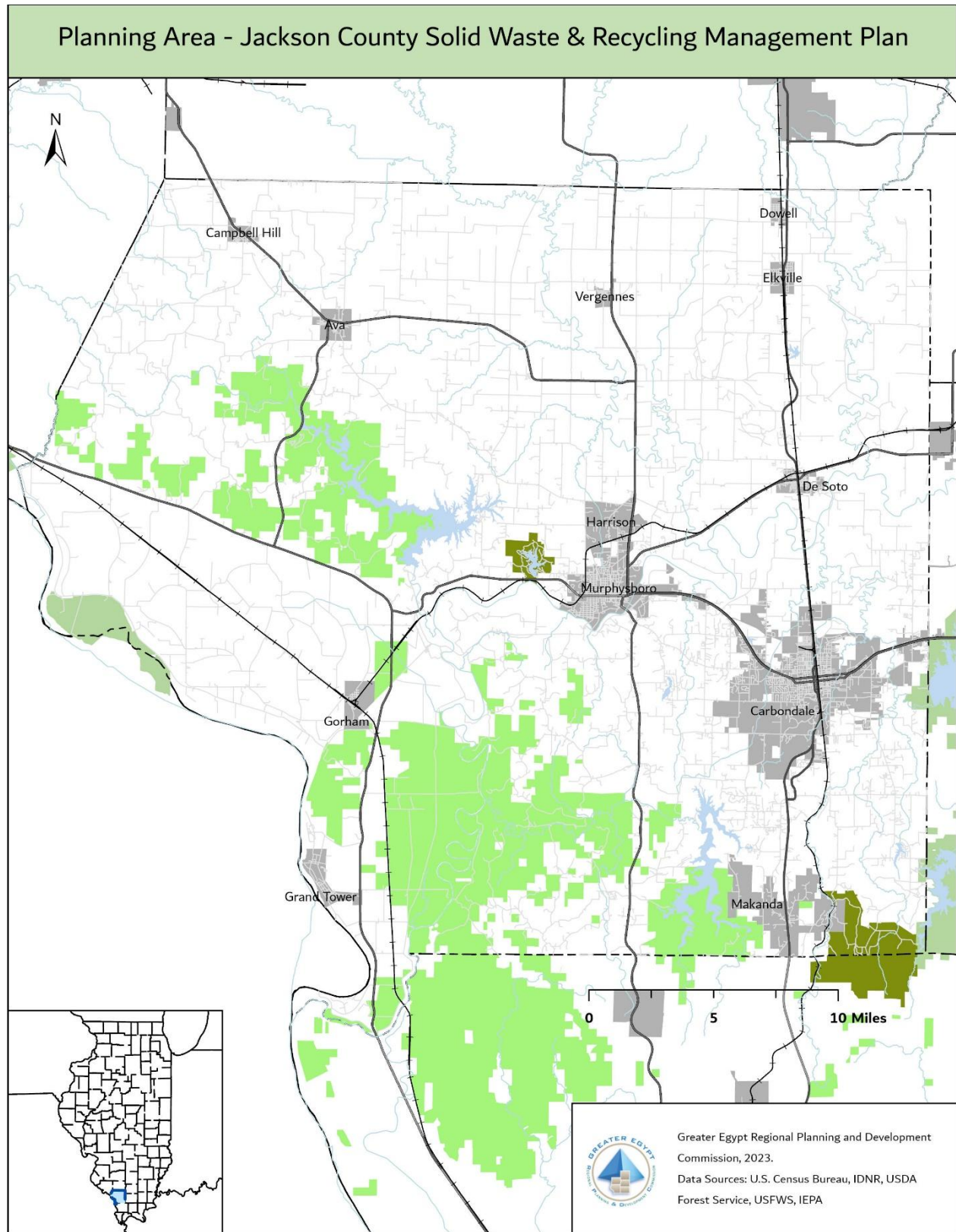
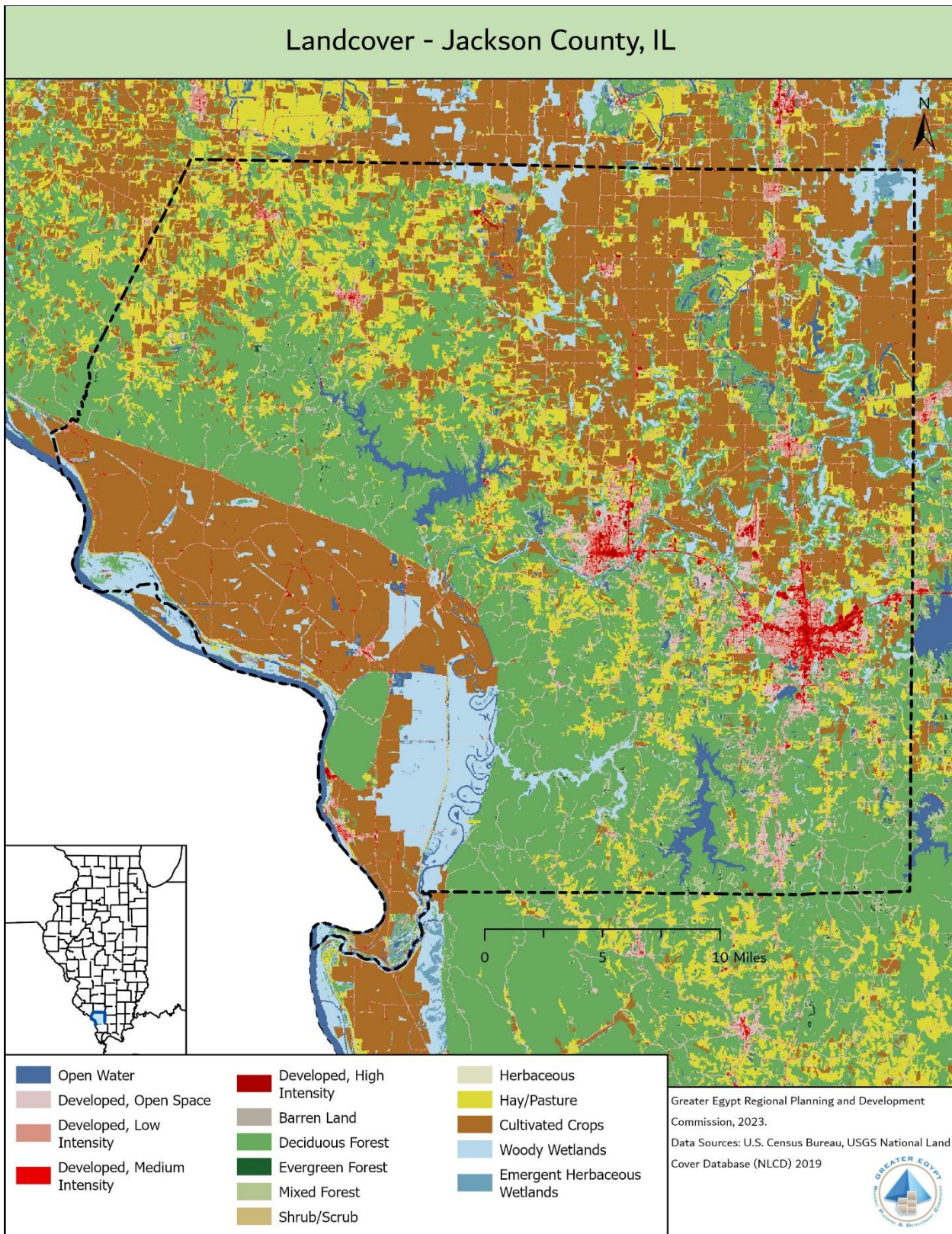


Figure 2



## **1.2. Planning Process**

Greater Egypt reached out to Jackson County Health Department (JCHD) to select a coordinator to assist in the planning process. Additionally, emails and letters were sent to each municipality in the county to request participation. Waste and Recycling professionals that operate in southern Illinois were requested to participate as well. The following table displays the Jackson County advisory committee. Advisory committee members provided data on their communities, attended meetings, offered suggestions for improvements in solid waste and recycling management, and provided draft comments on the Plan.

### *Implementation*

Jackson County Health Department has authority under the Jackson County Board to be the leading agency in implementing the Plan and overseeing future grant applications laid out in the management strategies section.

### *Adoption*

The plan will be submitted to the county Legislative and Public Safety Committee to approved and sent to the full County Board for plan adoption. JCHD has delegated authority from the Jackson County Board to oversee and enforce the Jackson County Waste Management Ordinance and Solid Waste Management Plan.

Table 3 - Jackson County Advisory Committee

<b>Jurisdiction</b>	<b>Name</b>	<b>Title</b>
<b>County</b>		
Jackson County Health Department	Kerri Gale	Director, Environmental Health
	Angie Kuehl	Coordinator, Recycling program
Greater Egypt Regional Planning and Development Commission	Tyler Carpenter	GIS & Environmental Planning Director
	Kelsey Bowe	Environmental Planning Coordinator
	Nick Keller	Environmental Planner
Jackson County Board	Kevin Lister	Board Member
	Nel Battrell	Board Member
	TC Mueller	Board Member
Jackson County EMA	Orval Rowe	EMA Coordinator
<b>Municipalities</b>		
Ava	Anthony Guy	Head of Maintenance
Campbell Hill	Teresea Spears	Village Clerk
Carbondale	Loren Polley	Refuse and Recycling Supervisor
	Lauren Becker	Planner & Sustainability Coordinator
De Soto	Eric Schuler	Village President
Dowell	Debi Gresham	Mayor
Makanda	Leslie Yambert	Village Clerk
Murphysboro	Sandra Ripley	Administrative Assistant
Vergennes	Glenda Horn	Office Manager & Village Clerk
<b>Schools &amp; Community Groups</b>		
Southern Illinois University	Aimee Lemrise	Sustainability Director
	Chaya Rice	Sustainability Council Member
	Candace Watson	Student
Elverado School District	Kevin Spain	Superintendent
Shawnee CUSD 196	Shelly Clover-Hill	Superintendent
Trico CUSD 176	Larry Lovel	Superintendent
Green Earth, Inc.	Stephanie Eicholz	Director
Carbondale Sustainability Commission	Sarah Heyer	Commissioner
	Chaya Rice	Student Representative
Alpha Kappa Alpha Sorority	Markea Haywood	Chapter President
<b>Industry Professionals</b>		
CRC Southern Recycling	Loren Grey	General Manager
	Sheila Koppert	Sales and Marketing
Republic Services	Jennifer Keener	Manager, Municipal Sales

Table 4 - Planning Timeline

Project Milestone	Month of Project																				
	1	2	3	4	5	6	7	8	9	10	11	12	13	14	15	16	17	18	19	20	21
Organize Resources	█	█	█	█	█	█															
Meeting 1		█																			
Municipal Questionnaires						█															
Write Plan							█	█	█	█	█	█	█	█	█	█	█				
Publish Notice of Planning & Public Mtg Invite								█													
Meeting 2									█												
Public and Hauler Surveys												█	█								
Meeting 3																█					
Draft Review by Advisory Committee																		█			
Public Comment Period (90 days)																		█	█	█	█
Submit Plan to IEPA																				█	█

## 2. Illinois Legislation

Illinois does not have one specific law/act that encompasses all solid waste management issues but has many separate pieces of legislation that address the issues pertaining to municipal solid waste. The three major laws that guide and impact management strategies are the Illinois Solid Waste Planning and Recycling Act, the Illinois Solid Waste Management Act, and the Illinois Environmental Protection Act. Other related laws and recent bills signed are also included in this section.

The sections below summarize the laws, to read the legislation in full, click on the links or visit <https://ilga.gov/>

### 2.1. Established State Laws

#### [Solid Waste Planning & Recycling Act \(415 ILCS 15\)](#)

The Solid Waste Planning and Recycling Act requires all counties in the state to develop comprehensive solid waste management plans which are to be reviewed by the IEPA. Each plan is required to be updated and reviewed every 5 years. Specific requirements of a comprehensive plan are summarized below:

- A description of municipal waste currently generated within the county's boundaries, and estimates of waste generation during the next 20 years, including an assessment of the primary variables affecting this estimate and the extent to which they can reasonably be expected to occur. (Section 3)
- A description of current waste processing facilities and their capacity and expected lifespan. (Section 4)
- A description of proposed management strategies, other projects, or facility upgrades for the next 20 years; including size, expected cost and financing method. (Section 9)
- An evaluation of advantages and disadvantages of the proposed waste management facilities and programs. (Section 9)
- Estimated timeline for the development and operation of each proposed idea. (Section 9)
- Description of proposed project locations. (Section 9)
- The identity of the governmental entity that will be responsible for implementing the plan on behalf of the county and explanation of the legal basis for the entity's authority to do so. (Section 1)
- Any other information that the Agency may require

### [The Illinois Solid Waste Management Act \(415 ILCS 20\)](#)

Passed in 1994, this act was made to provide framework for a comprehensive solid waste management program at the state level. Highlights of this Act include:

- All state agencies and local governments should consider compost product feasibility when soliciting bids for land maintenance activity, and priority should be given to compost products produced locally.
- Waste reduction programs are to be implemented in all State Agency buildings as appropriate.
- Requirements for paper products to contain post-consumer recycled materials.
- Requirements for state agencies to purchase and use other recycled products/materials whenever feasible.
- Aluminum can program requirements and use of funds generated from programs.
- Requirements for annual landfill capacity reporting
- Requirements for State-supported institutions of higher education to create waste reduction plans.

### [The Illinois Environmental Protection Act \(415 ILCS 5\)](#)

This act established requirements for the issuance of permits for pollution control facilities such as landfills. There are several provisions that pertain to specific issues of solid waste management. These provisions prohibit specific items from being disposed of in Illinois' landfills. Jackson County also has a local ordinance for pollution control facilities.

The prohibited items are as follows:

- **Landscape Waste:** Public Act 85-1430 banned landscape waste (grass, leaves and brush) from being landfilled effective July 1, 1990.
- **Lead-Acid Batteries (Car Batteries):** Public Act 86-723 banned the landfilling of lead-acid batteries effective September 1, 1990.
- **Waste Tires:** Public Act 86-452 (1989) banned whole used or waste tires from sanitary landfills effective July 1, 1994. (Public Act 93-839 eliminated DCEO's share of the Used Tire Management.)
- **White Goods:** Public Act 87-858 banned white goods (large appliances) from being landfilled effective July 1, 1994, unless the "white good

components have been removed.” White goods include “all discarded refrigerators, ranges, water heaters, freezers, air conditioners, humidifiers and other similar domestic and commercial large appliance.” White good components include: “any chlorofluorocarbons refrigerant gas; any electrical switch containing mercury; and any device that contains or may contain PCBs in a closed system, such as a dielectric fluid for a capacitor, ballast or other component.” Additionally, 9 landfills cannot accept “clean” white goods for disposal unless they participate in the Industrial Materials Exchange Service by communicating the availability of white goods.

- **Used Oil:** Public Act 87-1213 prohibits, beginning July 1, 1996, persons from knowingly mixing liquid used oil with any municipal waste that is intended for collection and disposal at a landfill. The law further stipulates that no owner or operator of a sanitary landfill shall accept liquid used oil for final disposal beginning July 1, 1996. For the purpose of this act “liquid used oil” does not include used oil filters, rags, absorbent material used to collect spilled oil, or empty containers which previously contained virgin oil, re-refined oil or used oil.

#### [Consumer Electronics Recycling Act \(415 ILCS 151/\)](#)

Provides out requirements for manufacturers to provide e-waste recycling programs and annual reporting. Also describes requirements for manufacturer e-waste program plans. These plans must be submitted annually and provide information to local governments and the public about how to participate in their e-waste program. This act requires manufacturers that sell Covered Electronic Devices (CEDs) in the State of Illinois to register with the Illinois Environmental Protection Agency. Collectors and Recyclers of e-waste must also register with the Agency. This act allows for convenience standard for the State of Illinois to offer e-waste recycling in underserved areas.

#### [The Solid Waste Hauling and Recycling Program Act \(415 ILCS 12\)](#)

Requires each waste hauler to provide information on how and what materials to recycle at least once every other year to customers with recycling service. Haulers shall provide a written offer to provide recycling services to commercial businesses, owners or operators of commercial property, and institutional facilities that are not recycling. materials collected by a hauler within a county or municipality shall not be deposited into a landfill or incinerator unless all reasonable efforts have been made by the hauler to sell those recyclable materials to a processor or end user. While not impacting prior

contacts, the act establishes that before a municipality with a determined population decides to award an exclusive or franchise contract for commercial collection they must demonstrate, with information provided by the haulers, that less than 50 percent of the commercial businesses do not have recycling services for a defined period.

## **2.2. Recent Changes**

The following is a list of bills that Governor Pritzker has signed this year to take effect immediately or in 2025.

**HB 1837** – Burning of Landscape waste changes in the Environmental Protection Act including a provision to not prohibit the burning of landscape waste by a person engaged in the business of tree removal, at the person's registered place of business, provided that the burning activity (i) is located in a county with a population of 50,000 or less, (ii) is more than 1,000 feet from the nearest residence, (iii) is not located in an area with a PM2.5 design value greater than 9 micrograms per cubic meter, (iv) is not located in an area of environmental justice concern, as determined by the Agency's EJ Start tool, and (v) is conducted in accordance with all federal, State, and local laws and ordinances. This will go into effect January 1, 2025.

**SB 3686** – Creates the Portable Battery Stewardship Act. Requires those who sell or distribute covered batteries or battery-containing products in the State to implement and participate in a battery stewardship plan. Details the role of retailers in the State and stewardship plan components. States goals for the stewardship program. Provides for funding of the program. Provides requirements for the collection and management of batteries covered by this Act. Details the education and outreach requirements of the program. Outlines the Agency's role. Details the penalties for violations of the Act. Details requirements for the marking, disposal, and collection of batteries covered by this Act. Provides for the collection of batteries independent of a battery stewardship program. Defines terms. Effective immediately.

**SB 2876** – Provides that the amendatory Act may be referred to as the Large Event Recycling and Composting Law. Amends the Solid Waste Planning and Recycling Act. Provides that, on and after January 1, 2025, an owner or operator of an event facility that has a maximum legal capacity or occupancy of at least 3,000 persons and that receives funding from the State of Illinois shall participate in the recycling program established by the county in which the event facility is located and shall send recyclable materials to a recycling center. Defines "event facility".

**SB 0839** - Amends the Environmental Protection Act. Excludes paint and paint-related waste, as well as certain paint and paint-related waste that are hazardous waste, from the definition of "special waste". Provides that paint and paint-related waste that are hazardous waste are designated as universal waste subject to the streamlined hazardous waste rules. Provides that the Environmental Protection Agency shall propose, and the Pollution Control Board shall adopt rules to designate and provide for the management of paint and paint waste as universal waste. This shall go into effect 1/1/2025.

### **2.3. Jackson County Waste Management Ordinance**

This local ordinance lays out regulations in Jackson County for waste and recycling disposal. Adopted in 1996 and amended most recently in 2012. Highlights include:

- This ordinance encourages residents in Jackson County to recycle to the fullest extent possible
- All haulers shall recycle materials separated by the customer unless contaminated
- Solid waste must be disposed of at proper facilities
- Haulers may not operate in Jackson County without procuring a license, license requirements also include a materials management plan and annual reporting from the hauler.
- Section 11 lays out violations and penalties for haulers and individuals who violate the ordinance

The full ordinance is available in Appendix 4.

### **3. Waste Generation and Composition**

This section summarizes waste generation and composition including municipal solid waste, and landscape/organic waste from residential sources, commercial /institutional / multi-family sources, and construction and demolition sources. Regulated special waste, industrial process wastes, agricultural wastes, and sludges are excluded from the definition of municipal solid waste and therefore not included in the Jackson County Solid Waste Management Plan.

#### **3.1. Waste Generation**

Waste generation refers to the weight of materials and products as they enter the waste management system from residential, commercial, and institutional sources and before recycling, composting, combustion or landfilling takes place.

To examine the waste generated in Jackson County the management plan is using municipal solid waste (MSW) generation data that was collected in the Illinois Commodity/Waste Generation and Characterization Study Update which was released in 2015. In that study update they categorize the municipal by type of waste, paper, plastic, glass, metal, organics, and inorganics. A breakdown of the composition of each type of MSW is discussed in the following section and can be seen in Table 5.

The Jackson County MSW generation rate is at 6.95 pounds per capita per day (pcd). With most of the waste coming from paper and organics. At this generation rate the total MSW produced within the county is 75,480 tons per year. If the generation rate was to continue at the 2015 level adjusted to the 2020 population data of 52,974. Which is down from 59,546 in 2015, and it would bring the total MSW down to 67,190 tons per year. Per capita waste generation is not expected to change significantly for the next 20 years. Unless significant changes to commercial food and product packaging are made at a state or national scale, the average person will likely maintain the same purchasing habits throughout their life. Much of the paper, cardboard, plastic, and foam waste that is thrown away is a result of how materials are packaged and supplied to retailers. Small rural communities such as those in southern Illinois have limited options for shopping and product choice.

There are some limitations to this MSW data. First being that there hasn't been a waste generation and characterization study conducted since 2015, so all the official data on a county wide level that is included in this report is almost decade old. So, the estimated data may vary significantly from the actual data of the MSW generation in Jackson County.

Table 5 - Waste Generation Summary and Future Projection

<b>Material</b>	<b>(2015) tons</b>	<b>(2020) tons estimate</b>	<b>(2035) tons estimate</b>	<b>Percentage of Total</b>
Paper	18,930	16,851	19,494	25.08%
Beverage Containers	120	106.8219	124	0.16%
Plastic	8,030	7,148	8,269	10.64%
Glass	2,560	2,279	2,636	3.39%
Metal	3,670	3,267	3,779	4.86%
Organics	16,530	14,715	17,022	21.90%
Inorganics	5,210	4,638	5,365	6.90%
Textiles	2,370	2,110	2,441	3.14%
Household Hazardous Waste	810	721.0481	834	1.07%
Construction and Demolition Debris	17,250	15,356	17,764	22.85%
<b><i>Population</i></b>	<b><i>59,546</i></b>	<b><i>52,974</i></b>	<b><i>61,319</i></b>	
<b><i>Total MSW Tons</i></b>	<b><i>75,480</i></b>	<b><i>67,191</i></b>	<b><i>77,727</i></b>	
<b><i>Total MSW (lbs/person/day)</i></b>	<b><i>6.95</i></b>	<b><i>6.95</i></b>	<b><i>6.95</i></b>	

### 3.2. Waste Composition

The breakdown of the composition of MSW generated in Jackson County can be seen in Table 6 as well as Figure 3 below. The highest portion of the MSW is Paper at 25% of the total MSW, and the smallest portion being beverage containers at 0.16%. This data came from the 2015 Illinois Commodity/Waste Generation and characterization. As a part of that study, samples of residential and commercial waste were sorted at landfills and transfer stations to identify the material components in waste that is disposed.

Figure 3

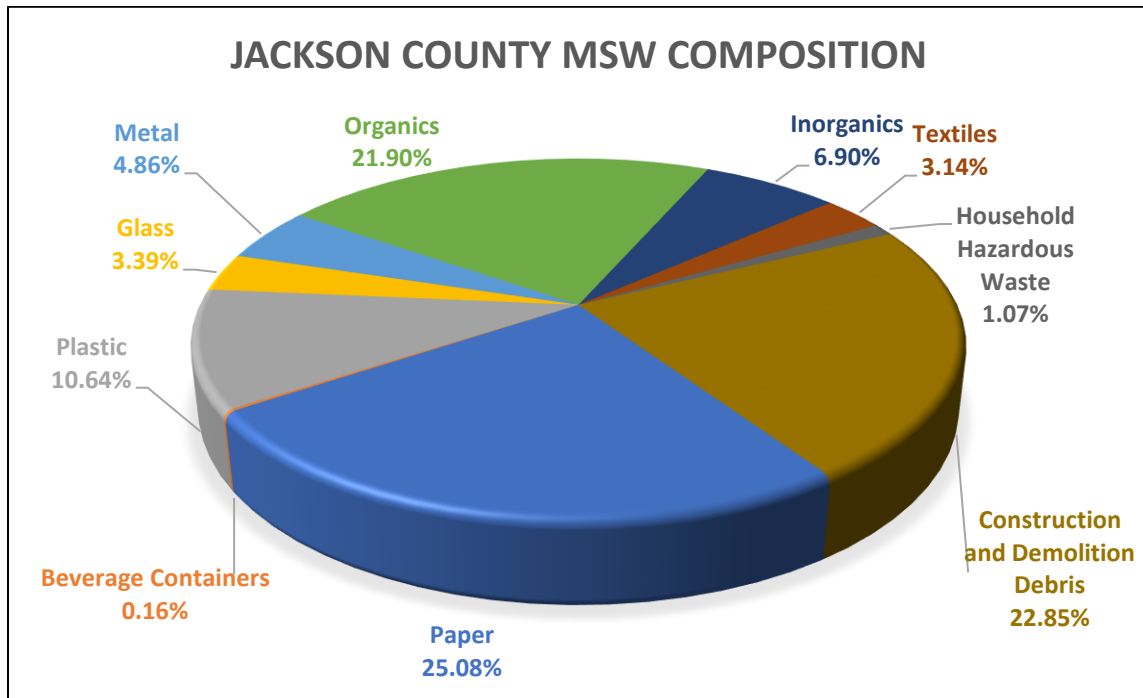


Table 6 – Waste Generation & Composition Data for Jackson County

Material	County Generation (lb/yr)	Total Generation (tons)	Material	County Generation (lb/yr)	Total Generation (tons)
Paper	635.8	18930	Metal	123.3	3670
Newsprint	43.0	1280	Aluminum Beverage Containers	15.5	460
High Grade Office Paper	45.7	1360	Other Aluminum	8.7	260
Magazines/Catalogs	28.9	860	Ferrous Containers (Tin Cans)	22.8	680
Uncoated OCC/Kraft	325.1	9680	Other Ferrous	51.4	1530
Boxboard	54.4	1620	Other Non-Ferrous	9.1	270
Mixed Paper - Recyclable	53.4	1590	Other Metal	15.8	470
Compostable Paper	72.9	2170	Organics	555.5	16530
Other Paper	12.4	370	Yard Waste - Compostable	117.6	3500
Beverage Containers	4.0	120	Yard Waste - Woody	23.2	690
Milk & Juice Cartons/Boxes - Coated	4.0	120	Food Scraps	290.2	8640
Plastic	269.7	8030	Bottom Fines & Dirt	45.3	1350
#1 PET Bottles/Jars	16.1	480	Diapers	36.9	1100
#1 Other PET Containers	4.4	130	Other Organic	42.0	1250
#2 HDPE Bottles/Jars - Clear	8.1	240	Inorganics	175.0	5210
#2 HDPE Bottles/Jars - Color	7.4	220	Televisions	5.0	150
#2 Other HDPE Containers	0.7	20	Computer Monitors	3.0	90
#6 Exp. Polystyrene Packaging	18.5	550	Computer Equipment/Peripherals	7.1	210
#3-#7 Other - All	13.1	390	Electronic Equipment	14.4	430
Other Rigid Plastic Products	58.1	1730	White Goods - Refrigerated	10.4	310
Grocery & Merchandise Bags	8.1	240	White Goods - Not refrigerated	23.2	690
Trash Bags	33.6	1000	Lead-acid Batteries	18.1	540
Commercial & Industrial Film	22.2	660	Other Household Batteries	4.4	130
Other Film	58.8	1750	Tires	25.9	770
Other Plastic	20.8	620	Household Bulky Items	63.1	1880
Glass	86.0	2560	Fluorescent Lights/Ballasts	0.3	10
Recyclable Glass Bottles & Jars	68.2	2030	Textiles	79.6	2370
Flat Glass	10.1	300	Carpet	24.5	730
Other Glass	7.7	230	Carpet Padding	6.7	200
			Clothing	30.6	910
			Other Textiles	17.8	530
			Household Hazardous Waste	27.2	810
			Construction and Demolition Debris (C&D)	597.4	17250
			Total MSW (tons)		75480
			Total MSW (pounds/person/day)		6.95

Source: Illinois Commodity/Waste Generation and Characterization Study, 201

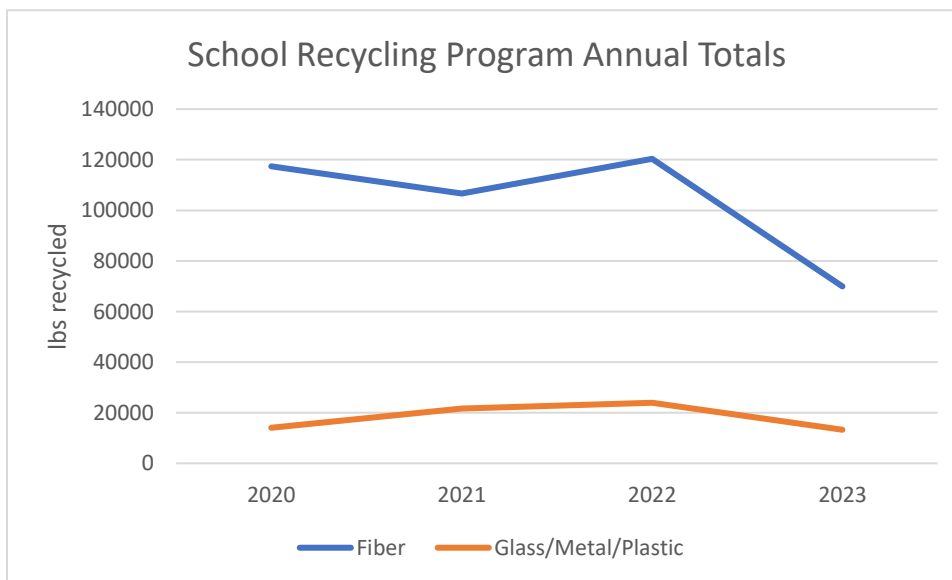
### 3.3. School Recycling Data

Jackson County Health Department provides funding and education for the school recycling program. Below are the annual summaries of materials recycled for all of the schools currently in the program.

Table 7

Participating Schools	
Brehm Preparatory School	Lewis School
Carbondale High School	Murphysboro High School
Carbondale Middle School	Murphysboro Middle School
Carruthers Elementary School	Parrish School
Desoto Grade School	Shawnee North Grade School
Elverado High School	St. Andrews Catholic School
Elverado Jr. High School	Thomas School
Elverado Primary School	Trico School
Gen John A Logan School	Trinity Christian School
Giant City School	Unity Point School

Figure 4



## 4. Materials Management

### Introduction

The solid waste in southern Illinois generally goes to one of 3 facilities:

- Transfer Stations – Temporary storage and processing facilities for solid waste. Waste is dropped off by the public and/or commercial haulers in small loads. It is then consolidated and transferred to landfills or recycling centers.
- Landfills – specifically designated sites for the disposal of waste materials. This is the final location for most waste in our region. Landfills may vary in design, storage, compaction practices, however they must meet the requirements set forth by the federal and state Environmental Protection Agencies.
- Recycling Center – Recyclables from haulers and the public are sometimes brought to recycling centers. The materials accepted and processing techniques vary widely from facility to facility; this Plan will describe the ones in our region.

Jackson County has many recycling options, there are also several hauling companies that offer curbside recycling options – see tables below and the hauler survey section for details.

### Interactive Map

[Click here to view an interactive map showing regional waste and recycling facilities!](#)

This map is a living document and will be kept as up to date as possible

### Program Enforcement

Jackson County Health Department oversees the school recycling program (section 3.3), four recycling drop of stations (section 4.4), and sells curbside recycling bins to residents if their hauler offers the service. They also host various annual events, including the popular household hazardous chemical collection, shred/med days, and others. Section 4.5 shows recurring annual events; event details are also frequently shared on the [JCHD Facebook page](#) and [website](#).

JCHD administers the Jackson County Waste Management Ordinance. JCHD also has delegated authority by the IEPA for the Illinois Environmental Protection Act. For questions on specific programs, call the JCHD Environmental Health Division, Recycling & Solid Waste staff at 618-684-3143.

#### 4.1. Landfills

Any collected municipal solid waste that is not recycled will eventually end up in one of three regional landfills. These landfills all have life expectancies far exceeding 20 years, therefore there are no recommendations to site new landfills or facilities for the collection of solid waste.

##### Southern Illinois Regional Landfill

Owned and operated by Republic Services, this landfill is in Jackson County. Their 5-year disposal average was 442,357 cubic yards with a remaining capacity of over 15 million cubic yards. The remaining life expectancy of this landfill is 35 years.

Table 8

Not Accepted:	
Batteries	Household Hazardous Waste (household cleaners, pesticides, solvents, fertilizers, antifreeze)
Ashes	Liquids
Electronics	Medical Waste/Sharps
Yard Waste (limbs, twigs, stumps, soil, grass clippings, gumballs)	Medication
Motors or Parts of Motors	Chemical Waste
Lawnmowers	Radioactive Waste
Empty tanks – Gas, Oil, Fuel,	Reactive Waste
Tires	Corrosive Waste
Paint	Septic/Sewer Waste
White Goods/Appliances - Refrigerators, Stoves, Freezers, Washers, Dryers, etc.	Compressed Cylinders
Used Oils - Motor, Hydraulic, Mineral, Cutting, etc.	Cars, Trucks, Motor Homes, Buses (No Vehicles) or parts
Furnaces/Water Heaters	Automotive Camper Shells
Air Conditioners/Mercury Thermostats or switches	Fluorescent Lights/Tubes
Flammable Waste – Propane Tanks	

Perry Ridge Landfill

Located in Perry County, this landfill had a 5-year average of 192,750 cubic yards disposed per year. The remaining capacity as of 01/01/2023 was over 10 million cubic yards, with a lifetime expectancy of 53 years. It is classified as a Subtitle D non-hazardous wastes landfill.

Table 9

<b>Accepted</b>	<b>Not Accepted</b>
Asbestos	Hazardous Wastes
CERCLA Wastes	E-Wastes (including all types of electronic equipment, commercial and residential)
Coal Ash (conditioned and dry)	Florescent Lightbulbs
Construction & demolition debris	Landscape Waste
Containerized waste	Medical Waste
Contaminated soil and debris	Motor Vehicle Batteries
FGD Wastes (conditioned and dry)	PCB Wastes (except as provided under TSCA)
Municipal Solid Waste	Used Motor Oil
Off Spec and out of date chemical and consumer products	Used Tires
RCRA Empty Containers	White Goods (i.e., large household appliances)
Liquids from industrial processes for solidification	
Sludges from industrial processes and municipal sewage treatment	
Wastewater and Water Treatment Sludge	

West End Disposal Facility

West End Disposal Facility in Saline County has the longest life expectancy in the region at 68 years. Their 5-year disposal average was 143, 436 cubic yards with slightly under 10 million cubic yards of space available. This landfill is owned and operated by Waste Connections. While this company also provides hauling services, they do not currently contract with any of the Perry County municipalities.

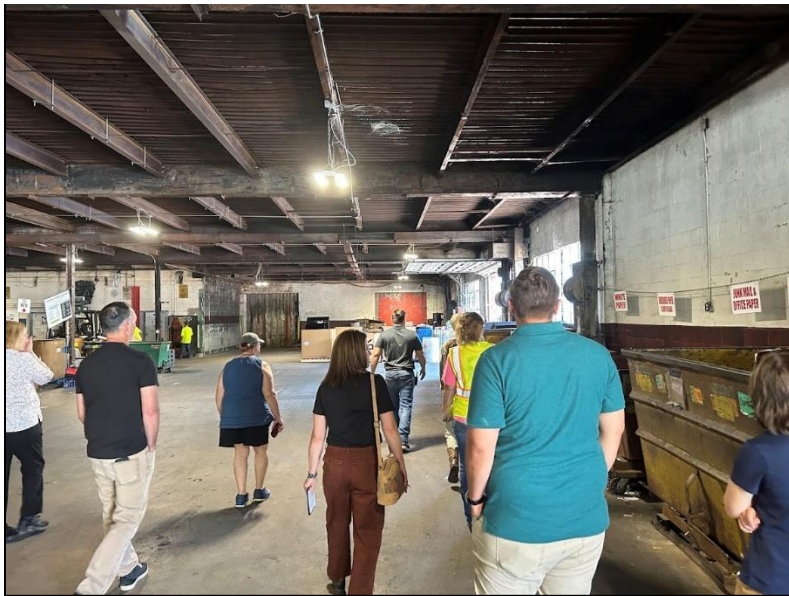
Table 10

<b>Accepted</b>	<b>Not Accepted</b>
Municipal Solid Waste	Hazardous wastes
Asbestos	White Goods (i.e., large household appliances)
Approved special wastes	Tires
	Electronics
	Bulk Liquids

## 4.2. Recycling

Jackson County is home to CRC Southern Recycling, a regional sorting and processing center for many different recyclable materials. They accept materials from the public, businesses, and commercial haulers. This recycling center came under CRC ownership recently, and several upgrades are planned to increase the capacity and diversity of materials accepted; and improve the recycling process for everyone in the community. Details will be covered throughout this Plan.

Figure 5



Left: Greater Egypt staff and other community leaders tour the CRC Facility with general manager Loren Grey. Photo by Kelsey Bowe.

Republic Services also owns a recycling center: Republic Services Recycling Southside MRF, in St Louis Missouri. All recycling picked up by Republic Services goes to this location, while most other haulers in the region utilize CRC Southern Recycling.

Because these two locations already fill the need of recycling drop-off and processing for both haulers and the public; it is not recommended to build any new recycling sorting/processing facilities; however, several areas in the county could benefit from additional drop-off bin stations. New curbside programs in municipalities that do not currently have one would also be recommended. Details on these recommendations can be found in section 9.

### 4.3. Recycling Contamination

The largest issue haulers and recycling centers face is contamination of loads.

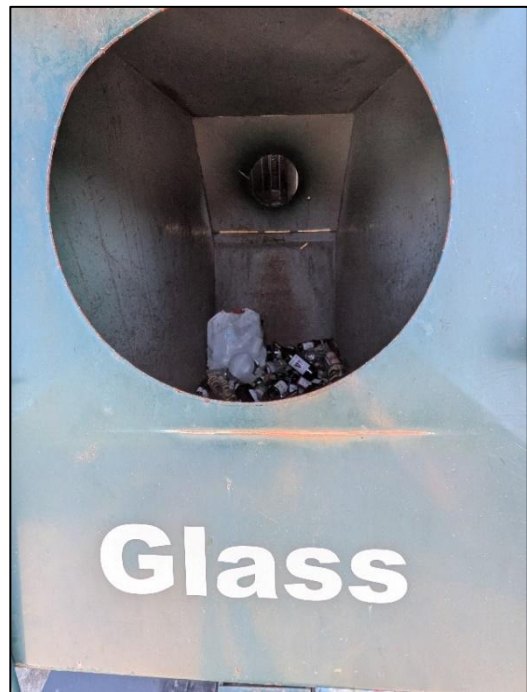
**Recyclables placed into drop off bins or curbside bins should be loose.** Items in bags significantly increase staff sorting time, bags can also clog machinery in hauling trucks and on the sorting line. Other contamination problems come from non-recyclable items being mixed in with recycling loads. Always check your local regulations from your municipality or hauling company to make sure the material will be accepted. If your curbside hauler refused to take your recycling bin or trash, you may have placed unaccepted items within, it is the responsibility of the household to ensure materials in waste and recycling bins will be accepted before they are placed at the curb.

Figure 6



Left: the intake center at CRC Southern Recycling. All of the plastic bags have to be manually opened by staff members before items can be sorted for recycling. This adds significant time and delays the amount of material that can be processed in a day.

Figure 7



Right: Items in a bag at the Grand Ave Drop-off station in Carbondale, IL. Items should be dumped in loose and the bag recycled or disposed of separately

#### 4.4. Tables of Regional Facilities

Table 11 - Landfills

<u>Landfills</u>	<u>County</u>	<u>Materials Accepted</u>	<u>Open to</u>	<u>Website</u>	<u>Phone</u>	<u>Address</u>
Perry Ridge Landfill	Perry	Municipal solid waste	Public, commercial haulers	<a href="https://www.perryridgelandfill.com/">https://www.perryridgelandfill.com/</a>	(630) 653-3700 (corporate number)	6305 Sacred Heart Rd. Du Quoin IL
Marion Ridge Landfill	Williamson	NA, facility not yet in operation	NA, facility not yet in operation			11178 North Skyline Drive, Marion IL 62959
Southern Illinois Regional Landfill	Jackson	Municipal solid waste	Public, commercial haulers	<a href="https://www.republicservices.com/">https://www.republicservices.com/</a>	(618) 867-2909	1540 Landfill Rd, De Soto, IL 62924
West End Disposal Facility	Saline	Municipal solid waste	Public, commercial haulers	<a href="https://www.wastecoconnections.com/west-end-landfill/">https://www.wastecoconnections.com/west-end-landfill/</a>	(618)-268-9412	1710 McFarland Rd #2061, Thompsonville, IL 62890

Table 12 - Transfer Stations

<u>Transfer Stations</u>	<u>County</u>	<u>Materials Accepted</u>	<u>Open to</u>	<u>Website</u>	<u>Phone</u>	<u>Address</u>
Energy Transfer Station	Williamson	Municipal solid waste	Public, commercial haulers	<a href="https://energytransferstation.com/">https://energytransferstation.com/</a>	(618) 727-7040	703 E College St, Marion, IL 62959
Herrin Transfer Station	Williamson	Municipal solid waste	Public, commercial haulers	<a href="https://www.republicservices.com/">https://www.republicservices.com/</a>	(618) 942-2193	13129 Bandyville Rd, Herrin, IL 62948
Mt. Vernon Transfer Station	Jefferson	Municipal solid waste	Public, commercial haulers	<a href="https://www.republicservices.com/">https://www.republicservices.com/</a>	(618) 242-3701	1106 Rackaway St. Mt Vernon IL 62864
Metropolis Massac County Transfer Station	Massac	Municipal solid waste, construction/de molition waste	Public, commercial haulers		(618) 543-7308	901 Joppa Rd, Metropolis, IL 62960
Sparta Transfer Station	Randolph	Municipal solid waste	Public, commercial haulers	<a href="https://www.republicservices.com/">https://www.republicservices.com/</a>	(800) 631-1156	8384 Valley Steel Rd. Sparta, IL 62286

Table 13 - Recycling Centers

<u>Recycling Facilities</u>	<u>County</u>	<u>Materials Accepted</u>	<u>Open to</u>	<u>Website</u>	<u>Phone</u>	<u>Address</u>
CRC Southern Recycling	Jackson	Many – see below	Public, commercial haulers	<a href="https://crcrecycling.com/">https://crcrecycling.com/</a>	(618) 549-2880	300 W Chestnut St, Carbondale, IL 62901
Progress Port	Williamson	Plastic #1 & #2, paper, glass (brown, clear, green), aluminum cans, steel(tin) cans, cardboard, bagged shredded paper, shredding services, plastic & wood pallets	Public	<a href="http://www.progre ssportinc.com/services/recycling-center/">http://www.progre ssportinc.com/services/recycling-center/</a>	(618) 985-8351	1120 N Division Carterville, IL 62918
Do Your Part Recycling	Franklin	Plastics 1-7 and bags, cardboard, mixed paper, steel, aluminum (no longer accepting glass)	Public	<a href="https://www.facebook.com/DoYourPartRecycling/">https://www.facebook.com/DoYourPartRecycling/</a>	(618) 218-6646	309 E Main St Benton IL 62812
Cimco Recycling - Marion	Williamson	Metals	Public, commercial haulers	<a href="https://www.cimcoresources.com/">https://www.cimcoresources.com/</a>	(618) 997-5400	9450 IL-148, Carterville, IL 62918
Cimco Recycling - Carbondale	Jackson	Metals	Public, commercial haulers	<a href="https://www.cimcoresources.com/">https://www.cimcoresources.com/</a>	(618) 457-6319	2622 New Era Rd, Murphysboro, IL 62966
T & T Recycling - Hurst	Williamson	Metals	Public, commercial haulers	<a href="http://www.tandtr recycling.com/">http://www.tandtr recycling.com/</a>	(618) 987-2088	16917 State Highway 149
T&T Recycling - Benton	Franklin	Metals	Public, commercial haulers	<a href="http://www.tandtr recycling.com/">http://www.tandtr recycling.com/</a>	(618) 435-5305	7533 IL-37, Benton, IL 62812
Ashalex Recycling	Williamson	Construction/demolition waste	Commercial haulers		(618) 942-3880,	Skyline Rd. Marion, IL 62959
Milano Metals & Recycling	Jefferson	Metals	Public	<a href="https://milanometals.com/">https://milanometals.com/</a>	(618) 244-3168	510 S 6th St, Mt Vernon, IL 62864
Tilly's Salvage Yard	Jackson	Metals	Public		(618) 790-3592	24634 US-51, Elkhville, IL 62932

Many commercial retailers also take certain recyclable materials. Home improvement and electronics stores often accept lithium-ion batteries and other devices. Nearly all commercial grocery stores accept plastic bags to be recycled. Call locations in your area to see what materials are accepted.



---

## INNOVATIVE SOLUTIONS FOR A GREENER FUTURE

---

### Materials Accepted at Carbondale Recycling Facility Drop-off:

- Aluminum Cans & Tin Cans
- Books (Hard-back & Soft-back)
- Box Board (i.e. food boxes, soda/beer boxes, etc.)
- Cardboard
- Clothes Hangers (Metal)
- Clothing (No Blankets, Pillows, Sheets, Towels, etc.)
- Dishwasher with metal inside
- Dryers/Stoves/Washers/Water Heaters
- Electronics (No more than 10 items per month)
- Glass Bottles/Jars (Clear and Colored)
- Holiday Lights
- METAL Fans, Irons, Tools, Miscellaneous metals
- Toaster Ovens
- Plastics (All but #6)
- Newspaper, Office Paper, Shredded Paper, Junk Mail/Colored Paper
- Magazines/Catalogs, Telephone Books
- Treadmills
- Windowpane Glass (not tempered glass)

Table 14 - Recycling Drop-off Locations

<u>Recycling Drop Off Locations</u>	<u>County</u>	<u>Materials Accepted</u>	<u>Open to</u>	<u>Website</u>	<u>Phone</u>	<u>Address</u>
Jackson County 1 - Health Dept	Jackson	Plastic #1 & #2, paper, cardboard, glass (brown, clear, green), aluminum cans, steel(tin) cans	Public	<a href="https://jchdonline.org/recycle-jackson-county/">https://jchdonline.org/recycle-jackson-county/</a>	(618) 684-3143	415 Health Dept. Rd Murphysboro, IL 62966
Jackson County 2 - U of I Extension	Jackson	Plastic #1 & #2, paper, cardboard, glass (brown, clear, green), aluminum cans, steel(tin) cans	Public	<a href="https://jchdonline.org/recycle-jackson-county/">https://jchdonline.org/recycle-jackson-county/</a>	(618) 684-3143	402 Ava Rd. Murphysboro, IL 62966
Jackson County 3 - Campbell Hill	Jackson	Plastic #1 & #2, paper, cardboard, glass (brown, clear, green), aluminum cans, steel(tin) cans	Public	<a href="https://jchdonline.org/recycle-jackson-county/">https://jchdonline.org/recycle-jackson-county/</a>	(618) 684-3143	Rock Crusher Road Campbell Hill, IL 62916
Jackson County 4 - Ava	Jackson	Plastic #1 & #2, paper, cardboard, glass (brown, clear, green), aluminum cans, steel(tin) cans	Public	<a href="https://jchdonline.org/recycle-jackson-county/">https://jchdonline.org/recycle-jackson-county/</a>	(618) 684-3143	Intersection of Main Street & Keller Highway Ava, IL 62907
Carbondale 1	Jackson	Plastic #1 & #2, paper, cardboard, glass (brown, clear, green), aluminum cans, steel(tin) cans	Public	<a href="https://explorecarbon-dale.com/171/Refuse-Recycling-Landscape-Special-Progr">https://explorecarbon-dale.com/171/Refuse-Recycling-Landscape-Special-Progr</a>	(618) 457-3275	875 E Grand Ave, Carbondale, IL 62901
Carbondale 2	Jackson	Plastic #1 & #2, paper, cardboard, glass (brown, clear, green), aluminum cans, steel(tin) cans	Public	<a href="https://explorecarbon-dale.com/171/Refuse-Recycling-Landscape-Special-Progr">https://explorecarbon-dale.com/171/Refuse-Recycling-Landscape-Special-Progr</a>	(618) 457-3275	700 S Oakland Ave Carbondale, IL 62901
Carbondale 3	Jackson	Plastic #1 & #2, paper, glass (brown, clear, green), aluminum cans, steel(tin) cans	Public	<a href="https://explorecarbon-dale.com/171/Refuse-Recycling-Landscape-Special-Progr">https://explorecarbon-dale.com/171/Refuse-Recycling-Landscape-Special-Progr</a>	(618) 457-3275	610 E College St Carbondale, IL 62901

Perry County Recycling	Perry	Plastic #1 & #2, paper, glass (brown, clear, green), aluminum cans, steel(tin) cans	Public	<a href="https://www.facebook.com/PerryCountySolidWasteRecycling/">https://www.facebook.com/PerryCountySolidWasteRecycling/</a>	(618) 357-3267	3764 State Route 127/13 Pinckneyville, IL 62274
Williamson County Courthouse	Williamson	Plastic #1 & #2, paper, cardboard, glass (brown, clear, green), aluminum cans, steel(tin) cans	Public- Mon, Wed, Fri 9AM-12Pm only	<a href="https://www.williamsoncountyil.gov/recycling/">https://www.williamsoncountyil.gov/recycling/</a>		N Monroe St (across from county Admin bldg.)
Johnston City Drop Off	Williamson	Plastic #1 & #2, paper, cardboard, glass (brown, clear, green), aluminum cans, steel(tin) cans	Public			100 W Broadway Blvd, Johnston City, IL 62951
Chistopher Drop-off	Franklin	Plastic #1 & #2, paper, cardboard, glass (brown, clear, green), aluminum cans, steel(tin) cans	Public			S Mulkey St
Sesser Drop-off	Franklin	Plastic #1 & #2, paper, cardboard, glass (brown, clear, green), aluminum cans, steel(tin) cans	Public			303 Franklin St, Sesser IL

Table 15 - Composting Facilities

<u>Composting Facilities</u>	<u>County</u>	<u>Materials Accepted</u>	<u>Open to</u>	<u>Website</u>	<u>Phone</u>	<u>Address</u>
New Earth Compost	Williamson	Landscaping waste	Commercial haulers, public (call ahead for appointment)		(618) 985-5007	11189 Samuel Rd, Carterville, IL 62918

Table 16 - Specialty Item Collection Locations

<u>Specialty Items</u>	<u>County</u>	<u>Materials Accepted</u>	<u>Open to</u>	<u>Website</u>	<u>Phone</u>	<u>Address</u>
Egyptian Electric Cooperative Association	Jackson	CFL lightbulbs	Public	<a href="https://eeca.coop/member-services/programs-services/">https://eeca.coop/member-services/programs-services/</a>	(800) 606-1505	1732 Finney Rd, Murphysboro, IL 62966
Midwest Tire Disposal	Franklin	Tires (fee to dispose)	Public	<a href="https://midwesttiredisposal.com/">https://midwesttiredisposal.com/</a>	(877) 617-3294	340 E Illinois Ave Benton, IL 62814
Jackson County Health Department	Jackson	CFL lightbulbs, Batteries: li-ion, small sealed lead acid, Ni-Cd, Ni-MH, Ni-Zn, button and coin cells, old cell phones	Public	<a href="https://jchdonline.org/recycle-jackson-county/">https://jchdonline.org/recycle-jackson-county/</a>	(618) 684-3143	415 Health Dept. Rd Murphysboro, IL 62966 *Collection during regular business hours only, no outdoor drop-off

## Medicine and Sharps

Most pharmacies, hospitals, and county health departments have locations to drop off unwanted medications. Call your nearest facility to ask for details or visit <https://medtakebackillinois.org/>

Jackson County has several locations that take sharps, this program was organized by the Jackson County Health Department and grant funded through IEPA.

Table 17 -Medical Sharps Collection Sites

<u>Medical sharps disposal</u>	<u>County</u>	<u>Materials Accepted</u>	<u>Open to</u>	<u>Website</u>	<u>Phone</u>	<u>Address</u>
Shawnee Health - Murphysboro	Jackson	needles, syringes, auto-injectors (EpiPen), lancets	Public	<a href="https://medtakebackillinois.org/">https://medtakebackillinois.org/</a>	(618) 684-3143	7 Hospital Dr Murphysboro, IL 62966
Shawnee Health - Carbondale	Jackson	needles, syringes, auto-injectors (EpiPen), lancets	Public	<a href="https://medtakebackillinois.org/">https://medtakebackillinois.org/</a>	(618) 684-3144	400 S Lewis Ln Carbondale, IL 62901
SIU Student Health Services	Jackson	needles, syringes, auto-injectors (EpiPen), lancets	Public	<a href="https://medtakebackillinois.org/">https://medtakebackillinois.org/</a>	(618) 684-3145	374 E Grand Ave Carbondale, IL 62901
Jackson County Health Department	Jackson	needles, syringes, auto-injectors (EpiPen), lancets	Public	<a href="https://medtakebackillinois.org/">https://medtakebackillinois.org/</a>	(618) 684-3146	415 Health Department Rd Murphysboro, IL 62966
Jackson County Ambulance Service	Jackson	needles, syringes, auto-injectors (EpiPen), lancets	Public	<a href="https://medtakebackillinois.org/">https://medtakebackillinois.org/</a>	(618) 684-3147	10169 Old Highway 13 Murphysboro, IL 62966

#### 4.5. Special Collection Events

In addition to these facilities, Jackson County and surrounding communities occasionally host special events for bulk item disposal, specialty recycling, and more. The table below shows annual events, this list may not include all waste & recycling events in the area, and event dates may change from year to year. Some events require proof of residency. Check with the event host or your local government for details. Many cities and villages also host their own community clean up days, check the municipal survey section for details.

Table 18 - Jackson County Events

Event	Items Accepted	Items Prohibited	Location(s)	City	County	Date(s)
Shred, Med, and Sharps Disposal Day	Documents to be shredded (2 boxes per household), unwanted medications (pills, creams, and patches), medical sharps	Liquid medication, inhalers	Jackson County Health Department	Murphysboro	Jackson	Spring and fall each year
Household Hazardous Materials Collection	Household chemicals, motor oil, many others- see list prior to each event in case of changes	explosives/ammunition / fireworks, propane tanks, radioactive waste, medical waste, single use batteries, electronics/appliances, sharps, controlled substances	SIU Banterra Center Lot Appointments required, free registration through Jackson County Health Dept Website	Carbondale	Jackson	June of each year Nov 2024, (fall date one-time event unless JCHD continues to receive funding)
Apple Fest Shredding Event	Documents to be shredded		Apple Fest	Murphysboro	Jackson	One time event
Pumpkin Smash	Clean (no paint, wax, or other chemicals) pumpkins & gourds	No plastic or foam pumpkins, organic waste only	SIU Farms	Carbondale	Jackson	November each year
Compost Bin Sale	NA	NA	Uofl Extension - Jackson County	Murphysboro	Jackson	One time event

Event	Items Accepted	Items Prohibited	Location(s)	City	County	Date(s)
Holiday Lights Collection	Holiday light strands	bulbs and lamps	CRC Recycling	Carbondale	Jackson	January of each year
Paint Swap	useable (not dried or contaminated) paints - household and craft		Has been hosted by Keep Carbondale Beautiful in the past, date may vary, does not occur every year			
Special Event recycling containers	Jackson County Health Department offers free refuse and recycling containers for events in Jackson County (concerts, fairs, etc.). Staff training and containers are available at no cost.	NA	Jackson County Events, contact JCHD for information	Any	Jackson	Year-round free program

Table 19 - Regional Events

Event	Items Accepted	Items Prohibited	Location(s)	City	County	Date(s)
Rend Lake Christmas Tree Recycling	Live Christmas trees only		Rend Lake: Sugar Creek parking lot, Dam West boat ramp, Jack Branch boat ramp; Mt Vernon: Veteran's Park, Optimist Park; Marion: Ray Fosse Park, Pyramid Park	Multiple	Multiple	First 2 weeks of January
Perry County Free Dump Days	Any normally accepted household waste, Perry County Residents only	No businesses, dump trucks, or semis	Perry Ridge Landfill	Du Quoin	Perry	1st weekend of June each year
Perry County Electronics Recycling Day	electronics, appliances, and metals		Perry County Government Building	Pinckneyville	Perry	1st weekend of June each year
Perry County Document Shredding	documents		Perry County Highway Department	Pinckneyville	Perry	1st weekend of June each year
Williamson County Fall Clean Up	Municipal solid waste, electronics, tires (4 car tires per household), white goods, automotive batteries (1 per household), recyclables, plastics, metal	Yard waste, medical waste, sharps, chemicals, shingles, hazardous waste, paint	Republic Services Herrin Transfer Station	Herrin	Williamson	Spring & Fall Each Year

## 5. Hauler Survey

An attempt was made to collect opinions from waste haulers that operate in the southern Illinois region.

List of haulers that were contacted with a request to take the survey (highlighted names indicate a response):

Big Dawg Disposal
Bulldog Waste Services
City of Carbondale
DS Dumpsters Rental, LLC
Ed Burris Disposal Service
Effingham County Transfer Station
Loyd's Hauling
McVicker Excavating
Millstadt Rendering Co
Northwind Dumpster Rentals
Quivey Sanitation, Inc.
Rapid Roll Off
Republic Services
Rural Trash Services, LLC
Second Cycle, LLC
SI Waste Container

Summarized Responses:

What services do you provide?						
Rural Trash Services LLC	Big Dawg Disposal	Quivey Sanitation, Inc.	Republic Services, Inc.	City of Carbondale	Second Cycle, LLC	Services
x		x	x	x		curbside trash hauling
x			x	x	x	curbside recycling
x		x	x	x		commercial trash
x			x		x	commercial recycling
	x	x	x			roll off dumpster rentals
		x	x			contract with cities for curbside program (trash only)
			x			contract with cities for curbside program (trash and recycling)
			x	x		yard waste composting
						food waste composting
						restaurant oil recycling
			x	x		other
<b>If you offer services not listed in the above question, please describe them here:</b>						
			Bulk Item Pickup - customer calls for a one-time pickup for a large item or a larger number of bagged items	yard waste pick up program, leaf vacuum service		

What Counties do you provide services for? Please list all IL counties even if outside of the Greater Egypt region.						
Rural Trash Services LLC	Big Dawg Disposal	Quivey Sanitation, Inc.	Republic Services, Inc.	City of Carbondale	Second Cycle, LLC	Counties
			x			Clay
	x					Clinton
	x		x			Franklin
			x			Gallatin
	x		x			Hamilton
			x			Hardin
x	x	x	x	x	x	Jackson
	x		x			Jefferson
			x			Johnson
	x		x			Marion
			x			Massac
		x				Monroe
x	x		x		x	Perry
			x			Pope
	x	x	x			Randolph
	x		x			Saline
	x					St. Clair
			x		x	Union
	x		x			Washington
	x		x			Wayne
			x			White
	x		x			Williamson

Where do you take the waste that you collect? List all transfer stations and landfills that your company utilizes						
Rural Trash Services LLC	Big Dawg Disposal	Quivey Sanitation, Inc.	Republic Services, Inc.	City of Carbondale	Second Cycle, LLC	Disposal Locations
x	x	x				Perry Ridge Landfill
	x					West End Landfill
			x	x		Southern Illinois Regional Landfill
			x			Herrin Transfer Station
			x			Mt. Vernon Transfer Station

Where do you take the recycling that you collect? List all facilities that your company utilizes						
Rural Trash Services LLC	Big Dawg Disposal	Quivey Sanitation, Inc.	Republic Services, Inc.	City of Carbondale	Second Cycle, LLC	Disposal Locations
x	x			x	x	Southern Recycling (Now CRC recycling)
x						TNT Metal
			x			Herrin Transfer Station
			x			Republic Services Recycling Southside MRF

Where do you take the yard waste that you collect? List all facilities that your company utilizes						
Rural Trash Services LLC	Big Dawg Disposal	Quivey Sanitation, Inc.	Republic Services, Inc.	City of Carbondale	Second Cycle, LLC	Disposal Locations
NA	NA	NA	x	x	NA	New Earth Compost, Carterville

If you offer trash hauling but not recycling, what are the reasons preventing your company from providing this service?					
Rural Trash Services LLC	Big Dawg Disposal	Quivey Sanitation, Inc.	Republic Services, Inc.	City of Carbondale	Second Cycle, LLC
Plastic recycling is limited to only grade 1 and 2	NA	Recycling is expensive to get rid of	NA	NA	NA




What are some issues that your company faces? Check all that apply						
Rural Trash Services LLC	Big Dawg Disposal	Quivey Sanitation, Inc.	Republic Services, Inc.	City of Carbondale	Second Cycle, LLC	Disposal Locations
	x	x	x			Cost of landfill/transfer station disposal
x	x		x			Cost of recycling
						Lack of transfer stations in the southern Illinois area
x						Lack of recycling facilities in the southern Illinois area
x			x	x		Lack of yard waste composting facilities in the southern Illinois area
x			x	x	x	recycling contamination
						loss of customers
	x			x		difficult to hire and/or retain staff
x						rural areas difficult to service
				personnel and mechanical issues		other (explain)

If food waste composting was an option in southern Illinois, is this a service your company could provide hauling for?						
Rural Trash Services LLC	Big Dawg Disposal	Quivey Sanitation, Inc.	Republic Services, Inc.	City of Carbondale	Second Cycle, LLC	
					x	Yes
x		x		x		No
	x		x			Unsure at this time

## 6. Municipal Surveys

A short survey was sent to every city and village in Jackson County at the beginning of the planning process. Below are the questions and summarized responses. Completing this form qualifies the municipal participation requirement of this plan.

**Jackson County Solid Waste & Recycling Management Plan**  
**Questionnaire for municipalities**



*\*Note this survey is for data collection purposes only to get a snapshot of community needs in Jackson County, JCHD may not have resources/funds available to assist with everything suggested\**

Name of City/Village:

1) Does your municipality contract for residential trash pick-up?  Yes  No  
If yes, what company and does that contract include curbside recycling?

2) Does your municipality have scheduled yard waste pickup or drop-off days?  Yes  No  
If yes, Does the municipality run the program or do you contract with a private hauling company, and how is the yard waste disposed of?

3) Does your Municipality have interest in creating a composting program or food waste scrap collection program?  Yes  No

4) Does your municipality conduct large waste pickup events or host free dump days?  Yes  No  
frequency and locations:

5) Does your municipality have interest in expanding the type of waste or recycling items to be collected during your community dump or pick up days with planning and support from JCHD? Check all that apply:

<input type="checkbox"/> Tires	<input type="checkbox"/> Document Shredding
<input type="checkbox"/> Electronics	<input type="checkbox"/> Batteries
<input type="checkbox"/> Paint	<input type="checkbox"/> Household Hazardous Waste (cleaners, solvents, etc.)
<input type="checkbox"/> Furniture	<input type="checkbox"/> Other <input style="width: 100px;" type="text"/>
<input type="checkbox"/> Home Construction Waste	
<input type="checkbox"/> Medicine	

6) What do you see as the biggest waste and recycling issues you face within your municipality in the next 5 – 20 years? These suggestions will be used to analyze needs and plan for the next 5 – 20 years. You will not be required to make changes based your feedback, but it will help staff identify needs and seek out resources/supports in an effort to better meet your community's waste and recycling needs.

- Contracted residential hauler for municipality
- New or additional waste containers downtown
- New recycling drop-off station
- Recycling bins in parks
- New transfer station
- Extra staff to coordinate waste/recycling disposal
- Other:

7) If you have other ideas, comments, goals or suggestions you would like to see in the Jackson County Solid Waste and Recycling Plan for the next 20 years, please let us know:

List of Representatives:

\*Note that cities and villages not listed did not respond to the survey request. Multiple attempts were made to reach every municipality within Jackson County.

<b>City/Village</b>	<b>Representative</b>	<b>Rep. Title</b>
Ava	Anthony Guy	Head of Maintenance
Campbell Hill	Teresa Spears	Village Clerk
Carbondale	Loren Polley	Refuse and Recycling Supervisor
Desoto	Eric Schuler	Village President
Dowell	Debi Gresham	Mayor
Makanda	Leslie Yambert	Clerk
Murphysboro	Sandra Ripley	Administrative Assistant
Vergennes	Glenda Horn	Clerk/Treasurer/Office Manager

Summary of Responses:

Trash Pickup?	
<b>Yes</b>	7
<b>No</b>	1

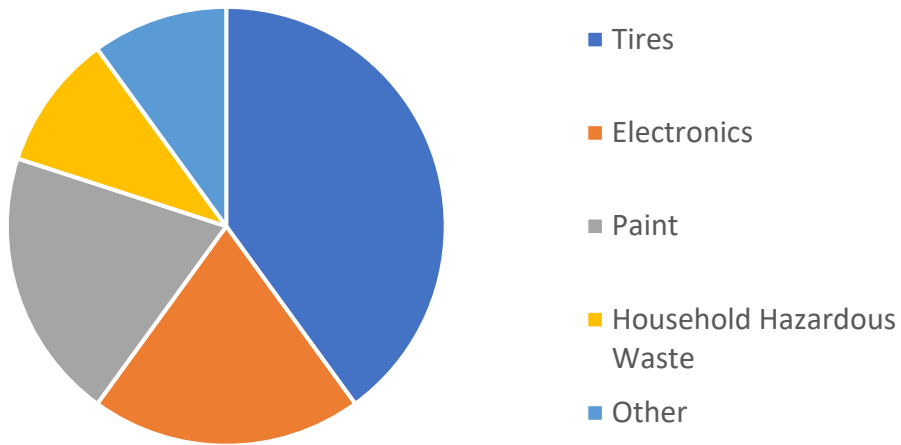
Recycling?	
<b>Yes</b>	4
<b>No</b>	3

Yard Waste?	
<b>Yes</b>	2
<b>No</b>	6

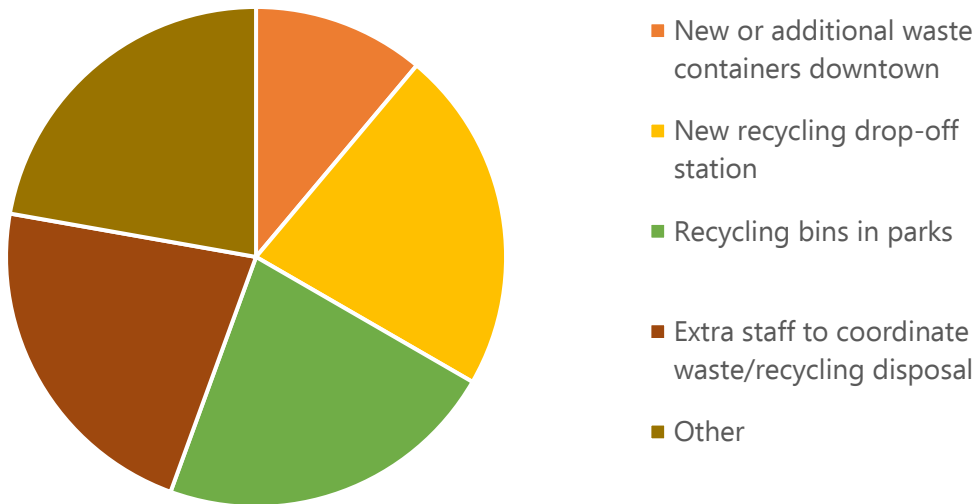
Composting Interest?	
<b>Yes</b>	1
<b>No</b>	6
<b>Maybe</b>	1

Dump Day/ Community Clean Up?	
<b>Yes</b>	7
<b>No</b>	1

### What do Cities/Villages want to dispose of?



### Biggest Issues/Needs for City/Village Recycling



Full Responses:

City/Village	Trash Pickup?	Trash Company	Recycling?	Yard Waste?	Yard Waste Company
Ava	Yes	Republic Services	No	No	
Campbell Hill	Yes	Quivey Sanitation	No	No	
Carbondale	Yes	Carbondale	Yes	Yes	Carbondale, New Earth Compost in Crainville
Desoto	Yes	Republic Services	Yes	No	
Dowell	Yes	Republic Services	Yes	No	
Makanda	Yes	Burris	Yes	No	
Murphysboro	No	NA	No	Yes	City opens up the storage yard on 2 <sup>nd</sup> & 4 <sup>th</sup> Friday each month for residential drop off. Yard waste is burned by city staff.
Vergennes	Yes	Republic Services	Yes	No	

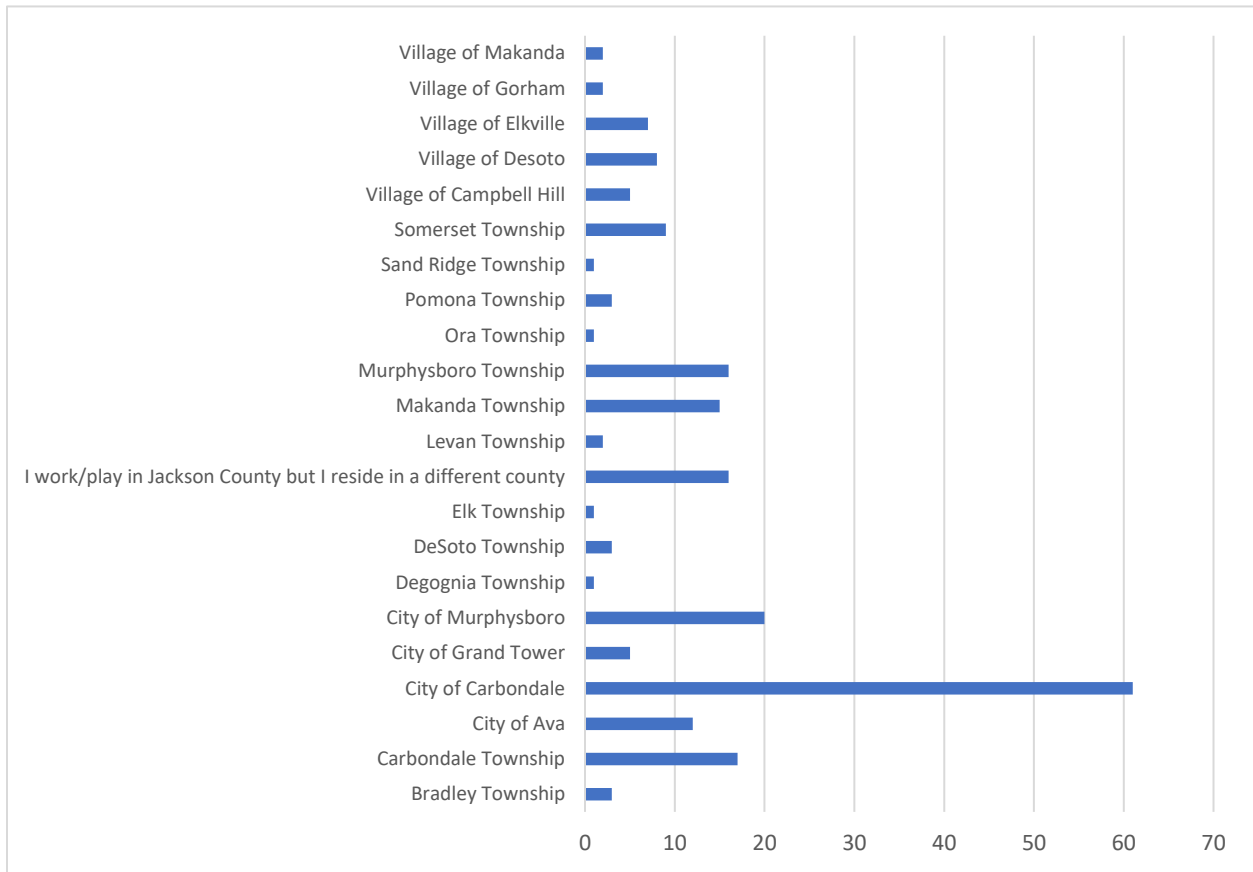
City/Village	Composting Interest?	Clean/Dump Day Events?	Event Description
Ava	No	Yes	Spring and fall, in lagoon parking lot
Campbell Hill	No	Yes	Yearly at the Village town shed
Carbondale	Yes	Yes	Spring cleanup in May
Desoto	No	Yes	Semi-annually in fall/spring, large waste picked up by Republic Services
Dowell	No	Yes	Twice a month residents can be put on a list for bulk pickups by Republic Services. Republic also hosts two village wide curbside pickup days a year
Makanda	No	Yes	Spring cleanup held next to the pavilion
Murphysboro	Would like more information	Yes	Twice annually
Vergennes	No	Yes	Annual city-wide cleanup day, recycling is picked up curbside biweekly

City/Village	Items of interest	Biggest issues	Other Comments
Ava	Tires, Electronics, paint	Recycling bins in parks, extra staff to coordinate disposal	
Campbell Hill			
Carbondale		Contamination on recycling, finding outlets for recycled material	
Desoto		New or additional waste containers downtown, recycling bins in parks, extra staff to coordinate waste/recycling disposal	
Dowell	Tires	New recycling drop-off station	We have heard through the grapevine from more than one Republic employee that though out recycling is being picked up, it isn't actually being recycled. That it is being dumped with the regular rubbish in the landfill. How can we ensure that our recycling is actually being recycled?
Makanda			Communication is a problem residents would like to see improved. Residents are not aware of recycling events, most no longer get the newspaper. A flyer sent to the village clerk, to be posted in several locations would be helpful. For example when SIU collects hazardous materials, or local paper shredding events. An economic way to dispose of old tires was mentioned several times.
Murphysboro	Tires, electronics, paint	No contacted hauler for the city, residents have to register on their own	The City of Murphysboro would like to see a tire recycling center developed. Our rivers, lakes, and highways are full of casually discarded tires. A place to recycle them would be helpful.
Vergennes	Tires, Household Hazardous Waste, Appliances	New recycling drop-off station, Rising costs	Would like to see our waste and/or recycling be kept here in the United States rather than shipped to another country

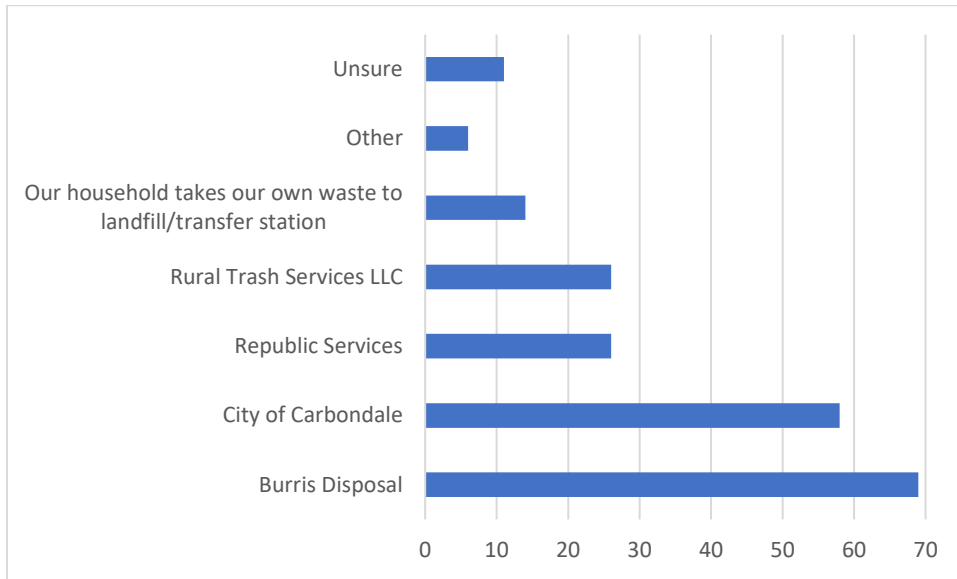
## 7. Public Survey

Total Responses: 210

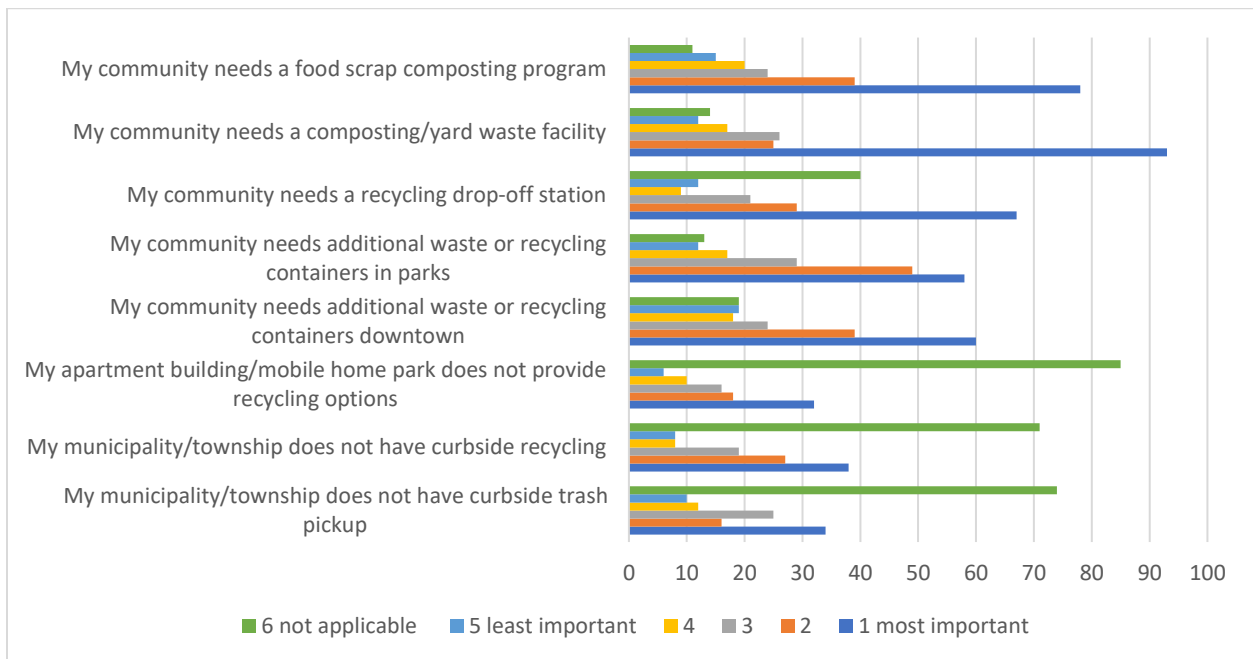
### 1. What city, village, or township do you live in?



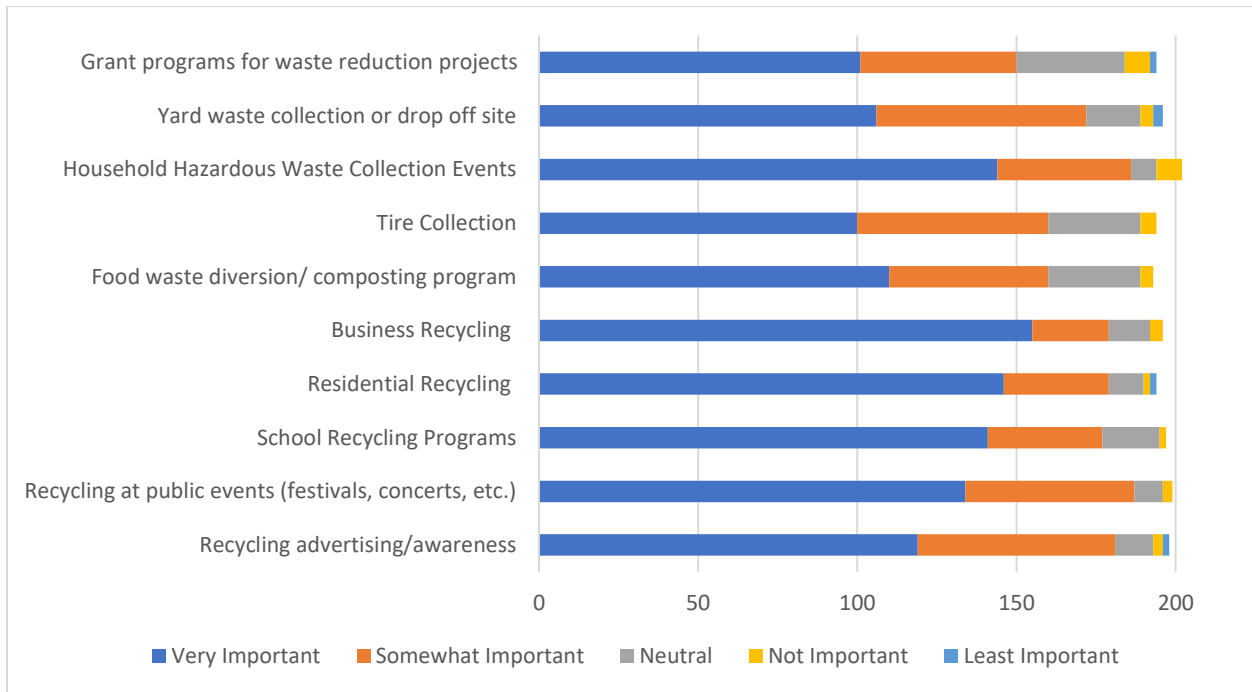
## 2. Who is your waste hauler?



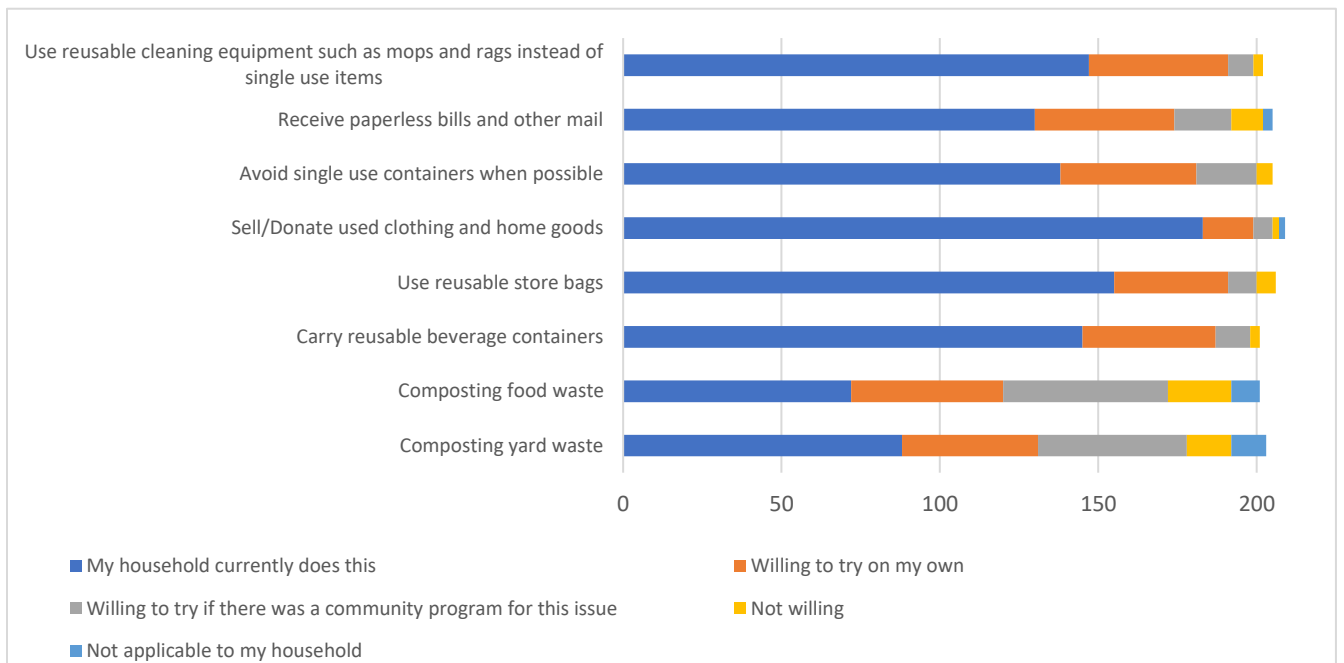
## 3. What do you see as the biggest waste and recycling issues you face within your community in the next 5 – 20 years? These suggestions will be used to analyze needs and plan for the next 5 – 20 years.



4. In your opinion, what is the importance of the following potential and existing waste management programs in Jackson County?



5. How willing would your household be in utilizing any of the following waste reduction techniques



6. In your opinion, what is the biggest issue regarding solid waste and recycling management in Jackson County, IL?

Infrastructure
Lack of chemical/household toxics collections.
Lack of awareness for both programs
Not all businesses are recycling/recycling consistently
A second public recycling container on the west end of town would be a welcome addition.
A drop off location for tree branches/yard waste in Carbondale would be good.
not knowing what can be recycled.
Confusion over plastic recycling. Exactly what is recyclable and what isn't.
Educating people particularly teenagers and young adults
Lack of specific recycle for plastics (of all kinds not just water bottles), paper (not just paper containers), and more events for disposing of tv's, computers, junk around the house. Advertising for such events would help.
Recycling of plastics or eliminating them from the waste stream
Have to go all the way to Carbondale to do more recycling
Providing recycling for free
Road little is out of hand.
none
Many folks don't care about recycling. Uses for recycled materials in the US
Not enough resources.
Recycling containers frequently full
Cost effectiveness, ability to manage once collected
Awareness of recycling programs and access to recycling drop off
RECYCLING BINS NEED TO EMPTIED MORE FREQUENT. TRASH PICK NEEDS TO OFFER FREE RECYCLING TRASH CANS.
yard waste
None
Burriss trash trucks in bad shape
Lack of ability to recycle plastics (3+)
Plastics like #5PP and expired smoke alarms that aren't being recycled locally
Curbside recycling feels very restrictive
Lazy people
Educating people to do it regularly and properly
Cost of large item removal, tires, junk metal, and other nuisance refuse that people cannot afford to dispose of.
People throwing tires and garbage into creeks and sides of the road. Perhaps because of lack of options or knowledge of options.
Lifespan of the Jackson County landfill; need to discontinue use of single-use plastic bags at local stores; lack of recycling options for #5 and other plastics.
Community buy in

More recycling drop off locations
We recycle anything we can, we are limited in the amount of recycling we can leave curbside for pickup. The hours of the recycling center are not conducive to someone who works the same hours. The recycling container at the health dept fills quickly. Need additional recycling centers
Lack of commitment! Businesses need to be more accountable and residents need to stop abusing the environment
Big institutions like SIH, bars and restaurant's not compelled to participate
Education
Not enough people do it! There should be more recycle bins throughout town and at outdoor events.
Reducing single use plastics
People's willingness to use trash containers.
no where to take Electronics, or big household items and greenish
We have too much littering! Public policy and accountability would be most welcome! Our county is beautiful, and we need to help keep it clean! stricter penalties for littering, more money to support clean up efforts, business and residential incentives to keep property clean, and No public mowing along roadways until after the trash has been picked up!
Ignorance leads to litter
Tire drop off locations
Is the current recycling program sustainable? Some people are just careless with their trash/littering
Litter. Especially North highway 51. I think that garbage blows out of the trash haulers trucks onto the highway , on their way to the landfill.
Plastic grocery bags and fast food containers
Not enough people recycle. Not all waste services offer recycling. Bot all plastics are accepted in curbside recycling, meaning multiple drop points and trips for proper disposal
Weekly recycling not biweekly
More recycling receptacles especially at public events. More education on the importance of recycling. In rural areas a lot of trash is thrown on roads.
The biggest issue I see is the need for recycling plastics that just aren't #1 or #2 plastics. I would like to be able to recycle more but there is nowhere to drop off those #5 items. This would help tremendously. Also-educating schools and businesses that do not have a recycling program would be great.
Apartment complexes not providing recycling bins
Segregate food and organic waste collection for composting and/or anaerobic digestion.. Diverting more waste from landfills.

The biggest issue re: recycling that I have found is the mindset of some people. I have known people who would never recycle because of their belief in THE RAPTURE! I attended a party of a geology classmate years ago. There were many beer cans & bottles afterwards. When I asked if she was planning to recycle, she looked me in the face and in all seriousness said, "there is no need to recycle, Nancy. Jesus is coming and we will ascend into heaven and leave earth behind." I found this rationale for not recycling rather shocking, especially in a young college student, but I'm afraid it is a widespread attitude. Also recycling and people associated with environmental concerns are regarded with disdain and viewed as Liberals, hippies, tree-huggers, woke, and all those other labels that are contemptuous. It baffles me and is beyond my understanding but as shocking as I found it to be, this mindset exists.

Would like to see local businesses phase out styrofoam containers.
Batteries ,A,C,D,aa, etc
Lack of public participation
It is not readily available for everyone.
Recycle electronics
We need to be able to recycle more products. We can't put glass in for recycling in De Soto and we have no local bin to drop it off at.
Very limited plastic recycling.
No way for Carbondale residents to recycle recyclable plastic other than #1 and #2 bottles
Need more Recycling centers outside Carbondale
What to do with plastic
Debris that flies out of the trucks in route to landfill.
Plastics
No city wide compost.
Landscape waste and electronic recycling
Extending curbside pick up
Need more options. 1 take alternate plastics like Rx bottles and plastic bags. 2 Tire recycle 3. More drop off spots.
I would really like to see community composting of food waste.
Easy access to drop off recyclables
The ability to only recycle plastics 1 & 2. The waste truck running out of room for recycling. Need more recycle drop offs
Many items cannot be recycled
Expense for services
plastic recycling (and use to begin with)
Limits on what can be recycled
People not sorting out items that are not recyclable. A large percentage of stuff put in bins is not recyclable.
People who don't care
I think that not enough people are aware of the facilities that we have. We also don't offer recycling options at festivals or even uptown in general.

The knowledge of environmental protection has not been disseminated to every household, so that everyone can not love cleanliness and environmental protection.
No funds
The biggest problem is that everyone has to take part in this event.
Construction of recycling stations
Is the shortage of waste treatment and recycling infrastructure.
not so many as
It is inconvenient to recycle large pieces.
Improper management
Employees are miscellaneous and difficult to manage
Employees are miscellaneous and difficult to manage
There are not many trash cans
Less recycling space.
sort management
Improper management of industrial solid waste treatment requires strict management and supervision, but in practical operation, some enterprises have problems with non-standard and lax management.
No problem for the time being
There is no regular disposal of garbage.
no
The amount of waste generated continues to increase, putting enormous pressure on waste disposal and recycling.
Improper management and insufficient processing ability
Perhaps the biggest issues facing solid waste and recycling management in Jackson County, Illinois include challenges with inadequate waste facilities, the cost of waste disposal, and increased environmental impacts. In addition, low waste recycling rate, incomplete waste classification and inadequate implementation of waste disposal policies may also be one of the important problems facing solid waste and recycling management.
Technical needs of garbage disposal.
The biggest problems may include insufficient capacity of waste treatment facilities, imperfect recycling infrastructure, inconsistent waste classification and treatment standards, environmental protection and safety issues in waste treatment, etc.
Access awareness
1. The garbage collection and classification is too simple, which brings inconvenience to people's garbage classification. 2. The household garbage classification is relatively lacking. 3. Garbage collection and treatment has not been fully industrialized.
Inadequate human resources management

The biggest problems faced usually include the following points: 1 The capacity of landfill sites is insufficient. With the growth of population and the increase of waste generation, the capacity of landfill sites is rapidly decreasing and cannot meet the demand in the long term. 2. Low recycling rate Although there are recycling projects, the participation rate of residents and enterprises is low, resulting in a large amount of recyclable materials entering landfills. 3. Insufficient public awareness. Many people lack understanding of the correct waste treatment and recycling methods, which affects the effectiveness of waste management systems. 4. Funding and resource limitations: Solid waste management and recycling projects require a significant amount of funding and resources, which are often insufficient and limit the expansion and optimization of related projects. To address these issues, we can strengthen public education, increase recycling rates, improve infrastructure, and seek more financial support and innovative solutions.

Publicity coverage is not enough

The recycling system is incomplete and the recycling facilities are insufficient.

The main issues in the field of solid waste and recycling management may include:

1. Proper disposal and classification of garbage: The classification and disposal of solid waste is very important, and if not properly managed, it may lead to a large amount of waste being directly landfilled or dumped, causing harm to the environment and public health.
2. The ability to recycle resources: There may be problems in the local area in the ability to recycle waste resources and the utilization rate of recyclable resources, and how to do a good job in sorting and recycling waste and maximize the recovery of available resources is a continuous problem.
3. Awareness of the government and citizens: The awareness of the government and citizens is also crucial when it comes to waste sorting and recycling. With the support of the government, popularizing environmental awareness and stimulating people's awareness of environmental protection and garbage sorting and recycling can effectively improve the recycling rate.

In summary, the issue of solid waste and recycling management needs to be comprehensively considered and solved from the three levels of policy, technology and culture to achieve more sustainable resource use and environmental protection.

Facilities and technology

not sure

no problem

The implementation of the comprehensive recycling program in Jackson County, IL has been a significant success in terms of solid waste and recycling management. This program has successfully promoted waste diversion and sustainability practices, making a positive impact on the community and the environment.

<p>"工业固废处理存在的问题1. 处理技术落后当前，许多工业固废处理设施采用的技术相对落后，处理效率低下，处理效果不尽如人意。这导致大量固废无法得到有效处理，给环境</p> <p>" Google translated: Problems in industrial solid waste treatment 1. Lack of treatment technology. Currently, many industrial solid waste treatment facilities use relatively backward technology, with low treatment efficiency and unsatisfactory treatment effects. This results in a large amount of solid waste that cannot be effectively processed, which brings great harm to the environment.</p>
<p>The biggest problem facing solid waste and recycling management in Jackson County, Illinois may be the lack of effective waste sorting and recycling facilities, leading to a large amount of recyclable materials being mixed into landfill waste, increasing pressure on landfills and wasting resources. Additionally, there may be a balance issue between waste disposal and environmental protection, requiring better policies and measures to promote sustainable waste management practices.</p>
<p>Increase publicity to let more people know the harm caused by solid waste to human beings.</p>
<p>In my opinion, the biggest problem of solid waste and recycling management in Dixon County, Illinois may be the shortage of solid waste treatment facilities and the limitation of the number of landfill sites. Due to the increasing amount of waste, the existing treatment facilities may not be able to effectively treat all solid waste, resulting in environmental pollution and waste of resources. At the same time, the capacity of landfill is limited, and it may face problems such as improper waste treatment and garbage siege. Therefore, the key to solve this problem is to improve the efficiency of solid waste treatment facilities, promote recycling and reduce the total amount of waste.</p>
<p>I do not have confidence that the "recycled" materials are actually being recycled by waste carriers.</p>
<p>Not timely enough</p>
<p>The challenge of plastic recycling.</p>
<p>Without proper guidance</p>
<p>I live in a rural area. I only have two choices for trash pick up. Currently using Burriss and am satisfied with the service. However, there are some things that you can not put in their trash bin. There needs to be a once a year tire disposal program. Or at least make a public list of where tires can be taken for disposal or recycling.</p>
<p>Low investment cost.</p>
<p>High cost and insufficient manpower</p>
<p>The lack of recycling and compost options. Recycling is possible to a small degree but pretty limited in what they will take. Compost is non-existent. When I lived in a city a separate truck would come by on trash day and empty our municipal yard waste/compost bin. That organic material was taken to a compost facility where it was commercially composted, bagged, and then we could buy it for garden projects. The purchases helped to fund the program and we didn't have to compost it ourselves. Win/win.</p>
<p>Ability to recycle all types of plastic</p>
<p>cost</p>
<p>Getting people to recycle and to know what to recycle. Make it as easy as throwing something away.</p>
<p>Heat treatment and curing</p>

Appliances
Not enough recycling centers. The current ones are always full.
There are no community recycling bins or pick up options in Grand Tower
Single use plastics-actually all plastics
Lack of recycling stations in Jackson County
Watching our trash company dump out recycling into the back of the trash truck
Propaganda is not enough
There are fewer garbage stations.
truthfully...the trucks need to pick up after themselves if they happen to dump onstreets or property while trying to their job
Not enough sites to drop off or collect. Would like curbside pickup
Not enough recycling bins
The lack of options for recycling plastic #3-7.
Compost/Yard Waste pick up would be awesome
Maintaining recycling containers and developing a county wide landscape waste collection program. Also helping to prevent trash from piling up along roadways and streets in our communities. Carbondale to Murphysboro to Marion has lots of trash littering the roadway edges. It looks quite terrible. Spreading awareness about littering and dumping trash or working with other agencies to institute fines for dumping or littering.
Make it more available in parks, community events, other towns besides Carbondale
Not enough drop off points
not enough participation by public
I honestly do not know. I'm happy with how things are working, but I don't know where our waste goes and how full our current landfill is. I know recycling is NOT as effective as we think it is, but humanity seems to be on a kind of doomed trajectory. We probably need to go back to the 50's and 70's when you took bottles back to the store for milk and soda to get a deposit back. But that likely won't happen in my lifetime.
Plastic grocery bags and non-biodegradable trash bags and fast food containers
Our recycling station only accepts plastic 1 and 2
..
Plastic recycling
People buying cheap junk at stores out of boredom.
Limited options when you don't live in city limits
Need more areas for this
We need electronic recycle days closer to our area. People are not willing to drive to Murphysboro or Carbondale when they are held down there.
I use one of the recycling bins in Carbondale but it isn't always there consistently. Knowing a schedule of when it will or won't be there would be useful.
Styrofoam

7. In your opinion, what is the biggest success regarding solid waste and recycling management in Jackson County, IL?

All recycling programs are above and beyond surrounding counties.
Carbondale Recycling Center
I have heard the new recycling owners are going to take more plastics. That is a big success in my opinion.
Drop off events, bin distribution, education in schools
That there are multiple sites and facilities to drop off everything from clothes to sheet metal.
I really like the Shred/Med day. Wish it would happen quarterly.
The convenience of Carbondale's curbside recycling is very positive.
curb side recycling & recycling bin at JCHD
The Southern Illinois Recycling drop off in Carbondale.
hazardous Waste drop off events
I haven't witnessed much change in the five plus years I've been a resident.
curbside recycling and haz mat, medical, shred days
At least we have something
The option to combine waste & recycling pickup from my trash service.
The collection events are great. We could use twice as many. It often happens that we are out of town on the collection days so we could use alternate dates.
several locations
Many folks don't care about recycling! Uses for recycled materials in the US.
Increased education
That we can recycle paper& plastic/cans. Also that we can now recycle pill bottles
better than surrounding counties
The new recycling center management opening up additional plastics for recycling.
HAVING RECYCLING BINS PLACED THROUGHOUT COMMUNITIES'
having curbside recycling and big item cardboard drop off
The county does a great job
Carbondale has convient recycling collection sites
hazardous waster disposal
Hazardous waste collection day
Hazardous waste collection
Weekly curbside service!
Not charging for recycling and providing containers.
The fact that we have it

Recycling drop-offs
I am very happy with the services in the City of Carbondale. I appreciate the curbside recycling plus additional drop-off points round town.
We are grateful for the annual Somerset Township landfill dropoff day! We also appreciate the recycling center at the county extension office.
Pick up and containers
We have a county program!
Drop off recycling center, recycling containers such as the one located at the dept of health
Many programs are offered and responsible citizens take advantage of them.
Carbondale gov and jackson county Health
Variety of ways to recycle most items
Besides Keep Carbondale Beautiful, it's good that other ad hoc organizations do their part to clean up public spots -- but, there should be more larger public trash/recycle containers (big enough so folk won't miss them!) in more places. You'd think folk would get the idea if there's a big 'put-trash-here/recycle here' thing right in their faces!
Recycling drop off containers
So many places to take items we don't want anymore, from food scraps to clothes.
not sure
Many great options!!! Great work!
Curb side recycling pick up
I love the many options for dropoff Carbondale has. Also love that other plastics are now accepted
Annual household hazardous waste collection. That's great. I wish there was a way we could drop things off during the year, such as automotive antifreeze.
The 2 recycling drop off facilities and shred/med days
Easy curbside recycling pickup
School programs.
Events like shredding, household chemicals, etc.
The big drop off spots for recycling has been great!
Carbondale's recycling into all residents
Your hardworking, reliable and polite collectors.
The fact that we do have city- wide recycling and events such as Shred & Meds and hazardous waste collection events.
Curbside recycling and the bins at JCHD. Special collection days like shred and med.
Residential recycling in place
Southern recycling facility

School recycling programs
Curbside recycling
Reducing what goes into the landfills
Curbside recycling
Shredding and med event
Curbside paper, plastic, glass, and metal recycling in Carbondale
Curbside recycling
Being able to recycle
I am content with the current recycling options
They are continuing to find ways to improve.
Paper and cardboard
adding recycling
Southern Recycling Center
Curbside pick up
Periodic hazardous material drop off
Iâ€™m impressed by the recycling programs and want them to continue.
There are some drop off sites but they arenâ€™t conveniently located
That we can recycle
There are options to recycle some items
Having some availability for recycling
Carbondale recycling center and Murphysboro yard waste site
Recycling drop off stations. Burris takes our recycling but we are only allowed one bin full per week. We take all the extra to the drop off stations.
Trash haulers accepting recyclables.
curbside recycling available
I feel like with working at a school I have seen people come in and they to teach the newer generation about recycling and what happens when we don't.
People are very cooperative, and waste disposal and recycling management are easy.
The environment is getting better.
Everyone plans his own home.
Can recycle at a fixed time
An effective recycling plan has been implemented, including promoting recycling awareness, providing convenient recycling facilities and establishing partnerships to promote waste reuse.
Classification recovery
Mature garbage recycling and treatment technology
Solved a lot of trouble
Solved a lot of trouble
Garbage classification and delivery

Recycling ads are popular in the community.
Implemented classified management.
The government has increased investment in the solid waste treatment industry, promoting technological progress and industrial upgrading.
I'm not sure.
Garbage sorting is not bad.
Management in place
The county has established an efficient and comprehensive solid waste collection, transportation and treatment system.
Save resources and protect the environment
One of the greatest successes in solid waste and recycling management in Jackson County, Illinois has been the implementation of a comprehensive recycling program. By setting up recycling sites, providing relevant information and education, the county has successfully promoted residents' active participation in solid waste recycling. This aggressive recycling program helps reduce the amount of waste in landfills and protects the environment, while also promoting the reuse and recycling of resources.
Citizens have a great awareness of garbage recycling.
The greatest success in solid waste and recycling management may include the establishment of a sound network of waste treatment facilities, the promotion of waste classification and recycling awareness, the adoption of effective environmental protection measures, and the promotion of waste resource utilization. These efforts have made solid waste treatment more efficient and environmentally friendly, and the recycling work has been actively promoted, which is helpful to reduce the negative impact on the environment and improve the overall waste management level.
Southern Recycling Center?
The regulations, plans and guidelines for the discharge, collection, storage, transportation, treatment, disposal and recycling of solid waste and hazardous waste have formed a relatively complete system of solid waste management laws and regulations.
City of Carbondale recycling and yard waste collection
In an effort to get closer

One of the greatest successes in solid waste and recycling management in Jackson County, Illinois may be the effective implementation of its community engagement and education programs. By raising public awareness of recycling and waste management, the county government can significantly increase the recycling rate and reduce landfill volume. In addition, successful local recycling programs and regular e-waste recycling activities have helped reduce the impact of hazardous waste on the environment. These measures not only protect the environment, but also save processing costs and enhance community environmental awareness.

Consciously improving recycling methods

More and more people are realizing the importance of waste disposal and resource recycling.

One of the greatest successes in solid waste and recycling management in Jackson County, Illinois, has been the establishment of an efficient recycling system that encourages residents to actively participate in recycling activities by setting up various recycling sites and providing information to increase waste recycling rates, effectively reduce the amount of waste to landfill, and protect the environment. At the same time, the county has also developed strict waste management policies and regulations, strengthened the supervision of waste treatment facilities, and ensured that waste disposal meets environmental standards, safeguarding public health and environmental sustainability.

Legal and policy support; Establishment of cooperative partnership; Technological innovation and application

not sure

Garbage recycling is very mature. Relevant experience is worth all countries.

The most significant success in solid waste and recycling management in Jackson County, IL is the successful implementation of a comprehensive recycling program. This program has effectively promoted waste diversion and sustainability practices, leading to a substantial reduction in the amount of waste sent to landfills. By encouraging proper recycling habits and providing convenient recycling options, the community has embraced environmentally friendly practices, resulting in a positive impact on both the local environment and overall waste management efforts.

"提高废物分类参与率:通过废物分类与回收推广项目,废物分类参与率大幅提升,废物回收量也得到了显著增加。

实现垃圾处理设施环保改造:垃圾处理设施的改造项目有效减少了垃圾填埋对环境的污染,同时提高了废弃物处理效率。

推动废物减量与资源利用"Google Translated: Increase the participation rate in waste classification: Through the waste classification and recycling promotion project, the participation rate in waste classification has increased significantly, and the amount of waste recycling has also increased significantly.

Realize environmentally friendly transformation of waste treatment facilities: The renovation project of waste treatment facilities effectively reduces the environmental pollution caused by landfills and improves waste treatment efficiency.

Promote waste reduction and resource utilization

In my opinion, one of the biggest successes in solid waste and recycling management in Jackson County, Illinois is the high level of public awareness and participation in recycling programs. The county has successfully implemented educational campaigns and community outreach initiatives to encourage residents to reduce, reuse, and recycle their waste. This active involvement from the local community has led to increased recycling rates and a reduction in the amount of waste sent to landfills, contributing to a more sustainable and environmentally friendly waste management system in the county.

Everyone is changing, and everyone deals with solids in different ways.

One of the greatest successes of solid waste and recycling management in Dixon County, Illinois is the establishment of an efficient and sustainable waste recycling system, which has achieved the goal of waste resource utilization and circular economy. By promoting waste classification, recovery and reuse, the dependence on landfill sites is reduced, the risk of environmental pollution is reduced, and the efficiency of waste treatment and resource utilization is effectively improved. This system not only promotes the practice of the concept of sustainable development, but also creates a cleaner and healthier living environment for local communities.

I really like the recycle drop off area at the health department AND I like the fact that there is a recycling container on our floor at the courthouse.

Coverage is more comprehensive

It has long been considered as a lower state.

Scaling

JCHD Household Chemical Collection Event at SIU

Significant results have been achieved ,and the living environment has been improved.
It was handled fairly cleanly
The fact that Carbondale recycles at all in this area is a relief.
Curbside collection of recyclables in many areas.
residential collection of recycling
The household hazardous waste collections seem to be very well utilized.
Resolve existing garbage classification
Carbondale's curbside recycling works really well
JCHD has a recycling dumpster at their location.
Southern Illinois Recycling Center?
School education
Action efficiency
It can be well controlled.
the service is on time weekly..
That there are a multitude of recycling drop off sites.
Curbside recycling
The availability of recycling containers in Carbondale is excellent. Please keep providing it. E
Curbside recycling
Continuing to get the message out and adding to the existing recycling infrastructure
curbside pick up
People probably do not compost. Our household only sends trash to the curb maybe once every 2-3 weeks. We see other trashcans overflowing with cardboard boxes and take out containers. We make our own food and do not eat a lot of processed food. Culturally, we should shift to more whole food, but it is expensive and time consuming, so it likely also will not happen in my lifetime.
Southern Recycling drive through drop off center
I love the recycling bin in campbell hill
.
Hazmat collection
Availability of services. (Plenty of opportunities to recycle/ dump properly.)
Recycling options in town
Town clean up days are great and should be done more than 1 time a year.

That there are options for garbage and recycling.
Curbside recycling

8. If you have any other ideas, comments, goals or suggestions you would like to see in the Jackson County Solid Waste and Recycling Plan OR if you would like to highlight a local recycling hero, please let us know!

Advertise for spring clean and other large pickup events for neighborhoods. Hold neighborhoods accountable for yard trash and disposing of items that are a safety concern to have in their yards.
Recycling for sites such as Liberty Village in Carbondale
Will do ðŸ˜ƒ I find that the local facilities for recycled materials are very good. BUT: I have the space and interest in recycling everything possible. Wil you be taking paint on 27 April? pal1849@gmail.com
Angie Kuehl is outstanding. Great educator!
SMALLER COMMUNITIES NEED DESITNATED YARD WAST SITES.
electronic recycling, not just in Carbondale. Stop Murphysboro from storing tires and electronics at their yard waste facility.
More grants for community-sponsored neighborhood cleanup events
I wish we didn't have to call for yard waste pickup, that it was simply an option along with the weekly curbside service.
Actually think there should be some sort of penalty for commingling the waste streams More education is needed starting early in the schools. Maybe some sort of incentive for reducing waste and increasing recycling.
Possibly advertise to folks who live in rural areas about options for recycling and trash drop-off or places to take old tires, etc.
Fine households and businesses that donâ€™t clean up their property
Sarah Heyer!
Nominate Tasis Kariannis
Monetize it. Make trash pickup worth their while, and see what the neighborhoods and streets look like.
Cristaudos Bakery is a good example of a business that recycles dilligently
Tire recycling and more options/dates for hazardous household waste would be amazing
Would love to be able to recycle glass
I haven't seen tire recycling for a while. Keep working through schools. The more the better.
I would like to see more recycling events and advertising.

Possibly an incentive for residents to recycle like a discount on our trash bill if we consistently set out bins each week.
Looking around on collection days, it's pretty clear that most don't think twice about the sheer magnitude of waste they're tossing. Would like to see a push to remind (incentivize?) folks to think about their own shopping bags, reusable water bottles and home composting.
I would love to see the shred and med, and hazardous waste days, happen more frequently. I like Carbondale's spring cleanup extra trash days, but wish they would do one in the fall as well. I'd like an option for recycling textiles that may no longer be suitable for people to wear.
Tasis Kearainous
We need legislation to limit single use plastics. Consumer demand is not sufficient due to the absence of options. Manufacturers need to be pressed (through policy change) to invest in plastic alternatives for packaging. Consumers also need to be pushed to do the right thing to move away from disposable/single use mindset.
How can we reduce the use of non-recyclable/poorly-recyclable containers, like plastic water bottles? Would it be possible to tax plastic bags?
Easier ways to recycle glass. Possibly public depository in local communities.
I would like to hear more about sustainability. I would like to see more encouragement given to composting of home yard waste and food waste, community composting, avoidance of pesticides and insecticides, and less grass/more native plants. Some of these may need to be addressed with a different program, as they may not be considered to directly relate to waste and recycling programs. Thank you!
Mr. Karayiannis of Carbondale recycling center
Would love to have a location to take food scraps for compost.
Carbondale Recycling north of Carbondale is a godsend!
community yard waste compost and mulch
Community activities on waste and recycling can be carried out to make everyone aware of the importance of environmental protection.
I think it is important to encourage residents to actively participate in the solid waste reduction and recovery plan. We can consider launching publicity activities to raise residents' awareness and understanding of recycling, such as holding recycling education lectures and community cleaning activities. In addition, local enterprises and organizations can be encouraged to participate in recycling projects and establish partnerships to jointly promote sustainable development. Through the efforts of the whole society, we can jointly create a cleaner and greener environment! If you like, I can also provide you with more information and suggestions on solid waste management and recycling.
Everything is fine now, there are no other opinions at the moment

In addition to increasing the recycling rate and establishing more recycling facilities, Jackson County can also consider strengthening education and publicity activities to raise community awareness of sustainable waste management. In addition, it is also a good idea to support and reward local recycling heroes and environmental advocates, and encourage their efforts by awarding awards or providing resources.
In the process of collection, it is easy to be mixed with other domestic garbage, which can be recycled only after classified collection and centralized large-scale treatment. In the recycling process, it is time-consuming and laborious to classify and transport all kinds of low-value recyclable materials, and the cost is high; In the separation process, centralized separation technology is difficult, and at the same time, because its monomer value is generally small and the economic added value of resource products is low, the profit space for recycling it is very limited.
no
Yes
Yes
Publicize the importance of garbage classification.
It can be recycled by various kinds, and books and plastic products can be recycled separately.
Do your duty in obscurity.
Enterprises promoting technology research and innovation should increase investment in technology research and innovation, and continuously explore new and more effective solid waste treatment technologies. At the same time, enterprises should strengthen cooperation with scientific research institutions, universities, etc., and jointly promote the research and application of solid waste treatment technologies.
No suggestions for the time being.
I think we should also encourage and support local businesses and organizations to get involved in waste recycling.
Improve technology
If there are other ideas, I will put them to you.
Increase recycling facilities: increase the coverage and quantity of recycling facilities, improve the convenience and accessibility of recycling facilities, and facilitate residents to sort and recycle waste. Carry out incentive mechanism: establish an incentive system to reward units or individuals with outstanding recycling work and encourage more people to actively participate in waste recycling.
I think it is everyone's responsibility to raise residents' awareness of environmental protection and protect the environment.
Increase publicity, government subsidies, and national campaigns

In Jackson County's solid waste and recycling program, there are some new ideas and suggestions that may further improve the overall effect: new ideas and opinions, community education and participation: increasing education programs for residents and businesses, and increasing awareness of proper recycling and waste disposal. Promote a "zero waste" lifestyle and encourage the reduction of waste generation. Enhance infrastructure: Add more recycling sites and facilities to facilitate residents in recycling. Improve garbage and recycling collection systems, increase efficiency and coverage. Innovative recycling project: Introducing organic waste composting projects to convert food waste into useful compost. Implement an electronic waste recycling plan to safely dispose of electronic products and hazardous waste. Incentive mechanism: Establish incentive plans to reward households and enterprises that actively participate in recycling and waste management. Launch "Recycling Heroes" rewards to recognize individuals and organizations who have made outstanding contributions to recycling. Goal and suggestion to increase recycling rate: Set specific recycling targets, such as increasing the recycling rate to 50% within the next five years. Reduce landfill volume: Through effective waste classification and recycling, reduce the amount of waste entering landfills. Promote circular economy: Support local enterprises to develop circular economy, encourage reuse and remanufacturing. Highlight local recycling heroes, local schools and students: commend schools and student groups who actively participate in and promote recycling projects. Community leaders: recognize leaders and volunteers who actively promote environmental protection and recycling work within the community. Through these new ideas and measures, Jackson County can further optimize its solid waste and recycling management system, achieving more efficient and sustainable development.

not yet

Not at present.

One idea to enhance the Jackson County Solid Waste and Recycling Plan could be to implement a community composting program. Composting not only diverts organic waste from landfills but also creates valuable compost that can be used to enrich soil and support local agriculture. By providing education and resources for residents to participate in composting, the county can further reduce its environmental footprint and promote sustainable practices.

Additionally, highlighting a local recycling hero who has made significant contributions to waste reduction and recycling efforts in the community can inspire others to take action. Recognizing individuals or organizations that have gone above and beyond to promote recycling and sustainability can help raise awareness and showcase the importance of individual actions in creating a more environmentally friendly community.

"体废物分类存放 4.1.1 废旧微机、打印机由公司办统一回收、贮存。 4.1.2 建筑安装、施工、检修固体废物按指定地点存放,绿化垃圾按所在部门指定的地点

2. 固体废物的处理、处置 4.2.1 各垃圾池、垃圾箱内垃圾分类收集后,统一送城市垃圾处理厂 集中处理。 4.2.2 集团公司范围内二次" Google translated: Solid waste is classified and stored. 4.1.1 Used computers and printers will be recycled and stored by the company office. 4.1.2 Solid waste from building installation, construction, and maintenance shall be stored in designated locations, and green waste shall be stored in locations designated by the department.

2. Treatment and disposal of solid waste 4.2.1 After the garbage in each garbage pool and garbage bin is sorted and collected, it will be sent to the municipal garbage treatment plant for centralized treatment. 4.2.2 Second time within the group company

One additional idea to enhance the solid waste and recycling program in Jackson County could be to introduce a community rewards system for recycling. This initiative could involve partnering with local businesses to offer discounts or incentives to residents who actively participate in recycling programs. By gamifying the recycling process and providing tangible rewards, it could further motivate residents to recycle and reduce waste.

Furthermore, highlighting local recycling heroes through a recognition program could also be beneficial. This could involve showcasing individuals or organizations in the community who have made significant contributions to promoting recycling and sustainability. By sharing their success stories and best practices, it could inspire others to follow in their footsteps and create a ripple effect of positive change throughout the county.

As your AI assistant, I think more education and publicity activities will help to raise people's awareness of the importance of recycling in Jackson County's solid waste and recycling plan. In order to highlight the local recycling heroes, we can consider holding an award ceremony or community activities to recognize those individuals or groups who have made positive contributions to recycling. In addition, establishing more recycling sites and providing convenient and easy-to-use recycling facilities is also one of the key factors to promote the success of the recycling plan. I hope these suggestions can help improve the solid waste and recycling plan in Jackson County!

I would like to see more participation in recycling among my peers - I pull recyclables out of the trash at work fairly often. I would also like to see a large cardboard recycling opportunity for boxes somewhere. I would also like to see paper containers for takeouts instead of styrofoam and plastic.

Hope it can invest more cost support ,efforts and effective measures,etc.

I would love to see some training for local stores on how to use reusable bags. Every time I bring mine in the baggers look at me as if I'm an alien and pretend they have no idea how to place my groceries in them. Every time I shop I'm having to explain what a reusable grocery bag is to some irritated and baffled employee. It's exhausting. Other places have banned single use grocery bags for years and the baggers here act like they've never even heard of the concept.
resource regenerating
I am surprised how young high school and college age children do not recycle. I would like more education form K-12 on recycling and the climate
Local businesses bar and restaurant should get large recycling bins and or discounted trash when using them.
You can go door-to-door
I suggest more garbage recycling and waste utilization.
is there a dump available??? would love to dump my yard waste to compost rather than pay for bags and to have city pick up albeit it is a nominal fee.
Tackle industrial waste clean up
Providing a landscape waste pickup more than 1 day a week or a drop off landscape waste collection facility would give residents a greater chance to maintain their properties. Our communities would look better, there would be less landscape waste causing problems with drainage or pest problems. Our property values would be enhanced because our communities would look like we care for them. More people would want to live in place that people maintain and care for their properties.
N/A
More residents recycling
.
Carbondale drop off recycling is great!
Getting into the schools and ensure they are recycling and offering free pick ip

## 8. Community Group Survey

Total Responses: 69

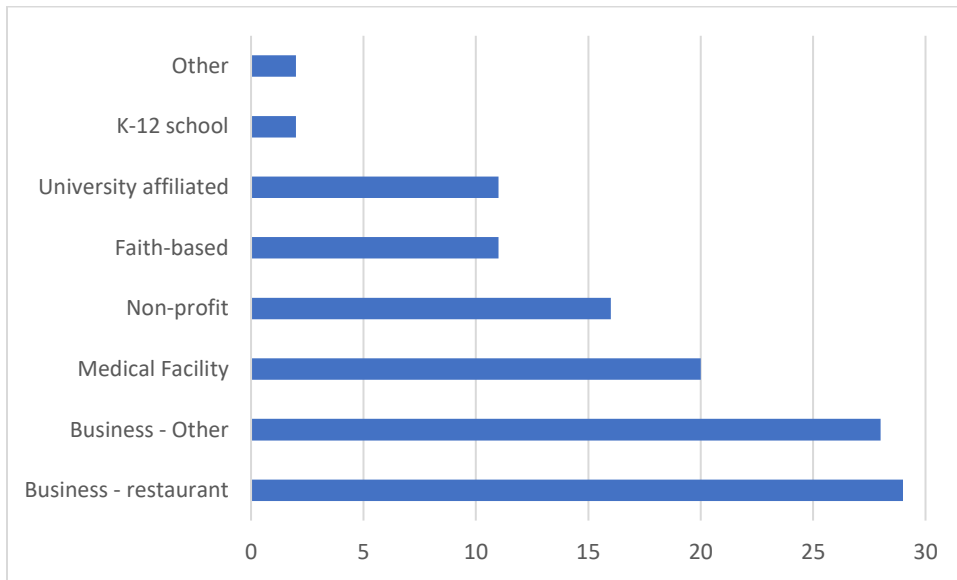
\*Note: some of these responses seem to be from outside Jackson County and are possibly AI responses. Results should be interpreted with caution.

### 1. Name of Organization

Seventh Direction Music, LLC
World Environmental Protection
Murray
Hospital
Walgreens
Jackson Community Needs.
Business organization
服务行业
hospital
Green Giant Energy Recycling Co., Ltd
secrecy
Restaurant Manager
Make ouch!
High-end restaurant
Recycling station
Gas Dapot
Huan Lan
American Wholesale Club
Garden Master
The Warner Brothers Store
Beyer Deli
Allied City Stores
社区团体调查
N/A
Non-profit community association
Del Farm
Total Serve
Yunduo Community
N/A
Dentistry
Waste transportation and recycling
Ecological environment sub-bureau
Burger Chef

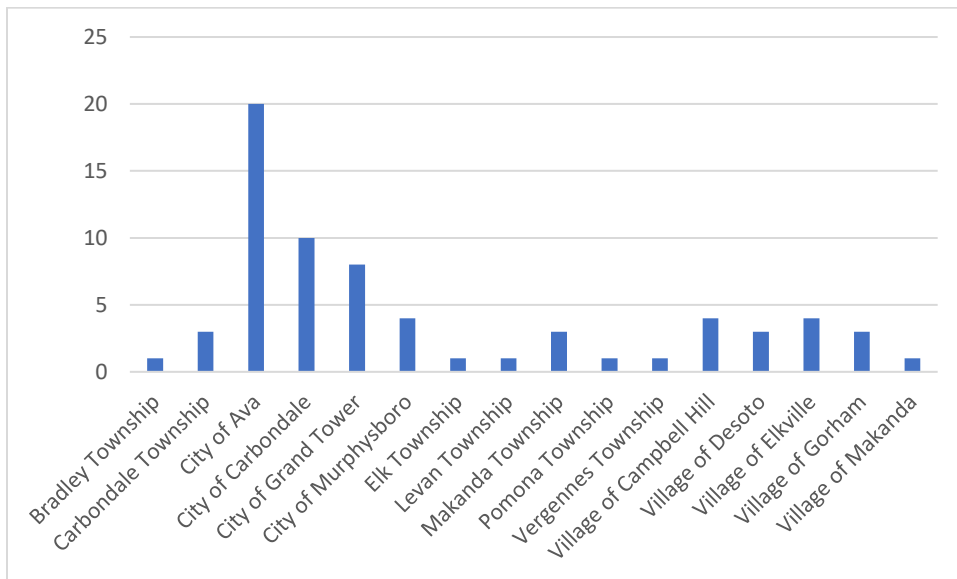
McMahan
Economic and trade companies
J.B.Aan Sciver
Environmental Protection Association
Silo
Jewish Community Service Organization
Hei
Singer Lumber
no
Laneco
Enterprise
Yizhou Recyclable Items Station
Turtle
Manya Restaurant
Jackson County Cafe
Dream Home Improvements
Protean
online
Belle Ladi
Recycling No.1
Property disposal specialist
Eden Lawn Service
Farrell
Auto Palace
Twin Food Stores
school
Dee L Moncrief
catering industry
Good Times
Listenin
Exact Realty
Community groups
Golo Vecchi
Loblaws
newyear
Confluence Books

## 2. Type of Organization – Check all that apply



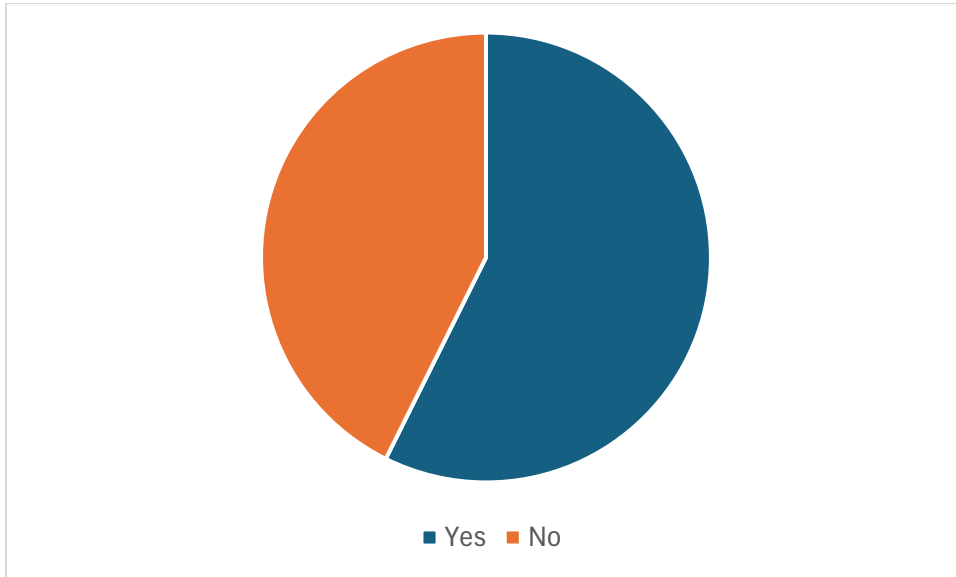
27 responses checked more than one option

## 3. Location of Organization



\*City of Ava was the first choice of the drop-down menu for this question. It is unclear how many of those responses are organizations in Ava.

4. Does your organization contract for commercial trash pickup?

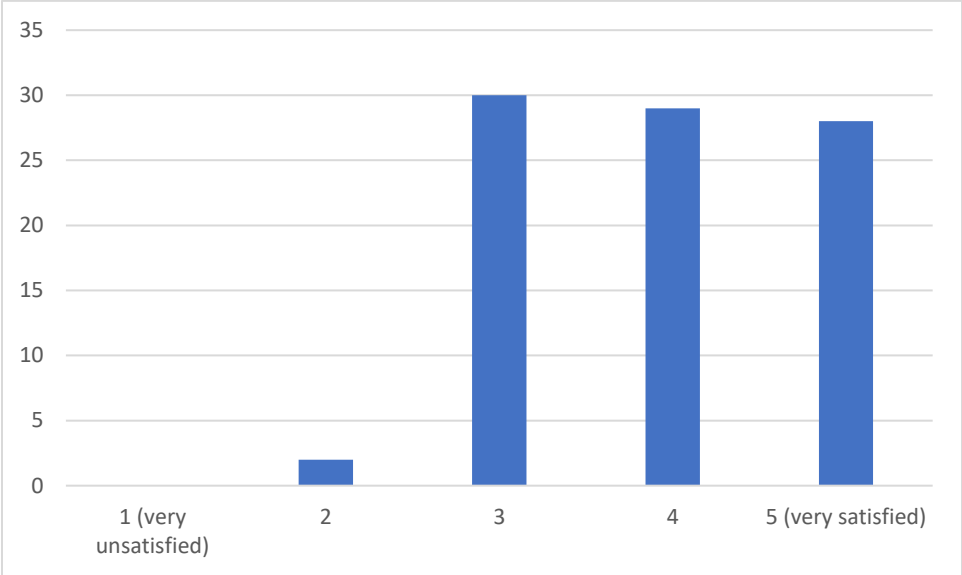


5. If yes, what company?

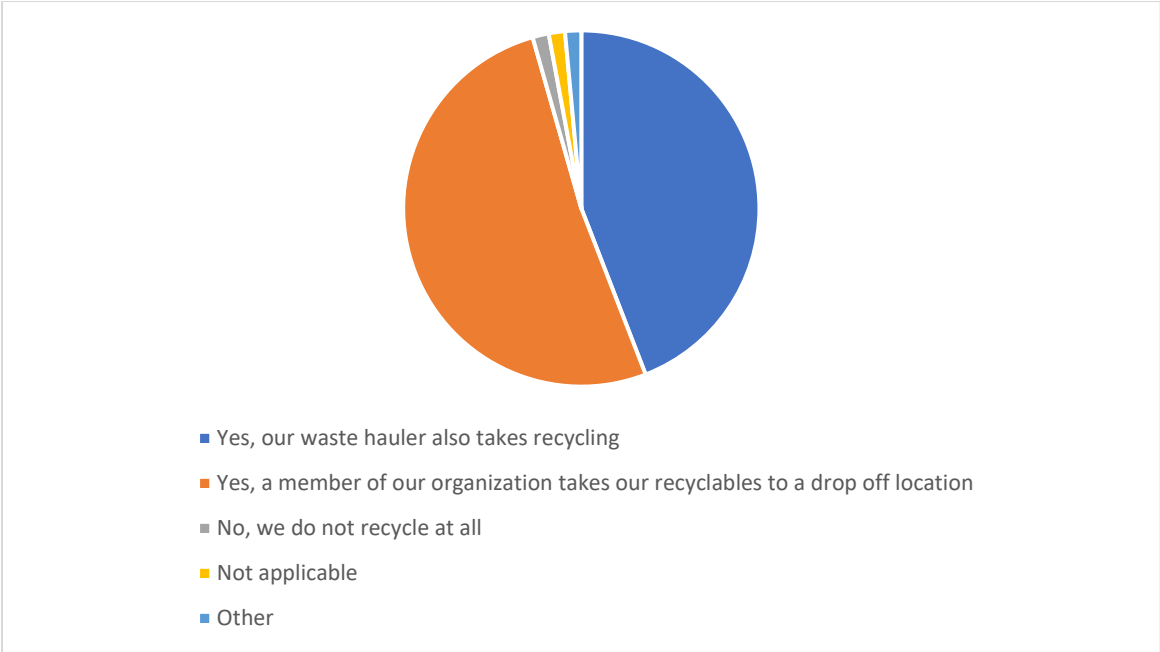
Aijia iot environmental protection company
American Recycling Technology
Delphi Corporation
Dentistry
Dream Home Improvements
Environmental protection companies
food production
Garbage cleaning and transportation company
Hollywood Video
JYS
Las Vegas Yard Management
Laura Ashley
Lvjuneng waste recycling company
ManCharm
Melson
Mode O
Murray
None
Skaggs-Alpha Beta
TerraCycle
Total Serve
trash recycling
Waste recycling company

Wats Management Inc
WM.US
不是

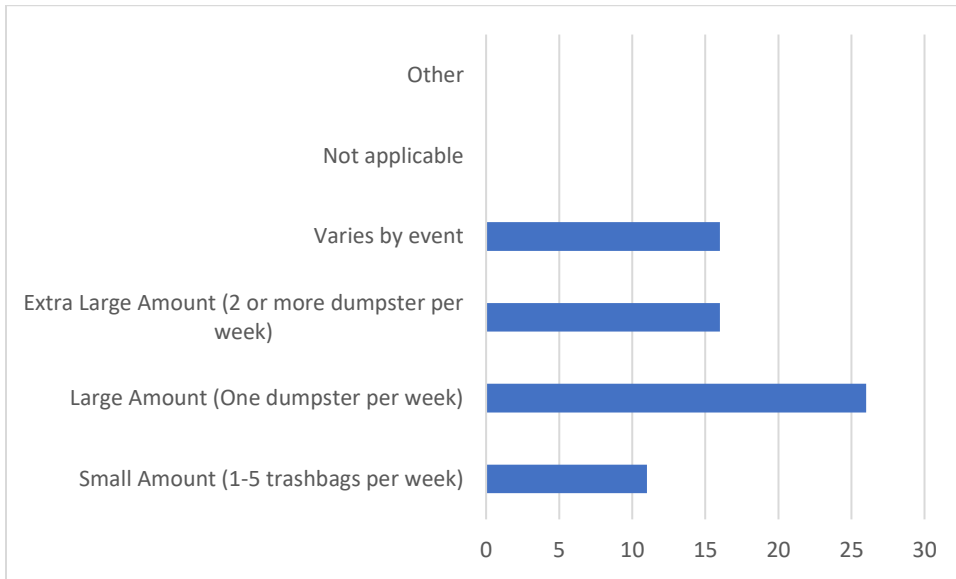
6. How satisfied are you with your waste hauler services?



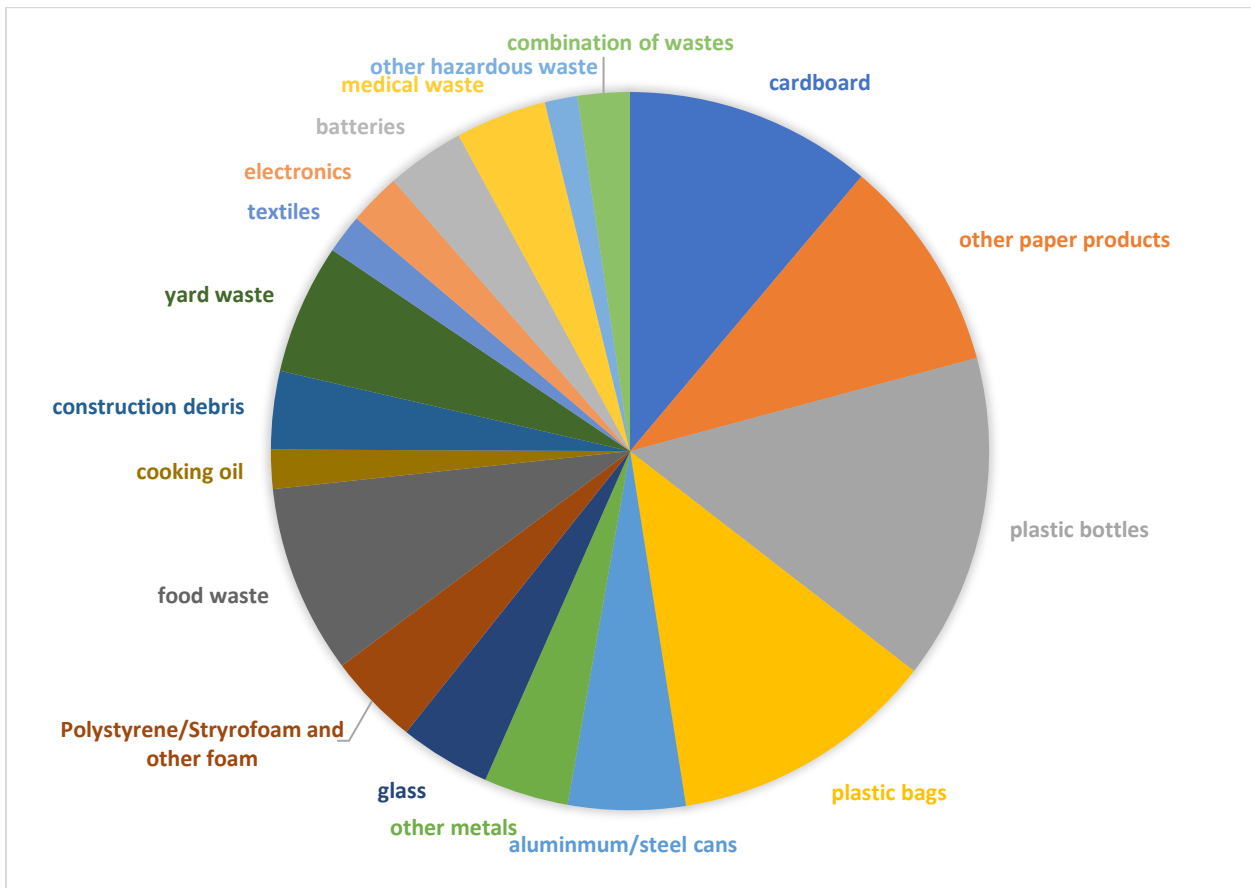
7. Does your organization recycle?



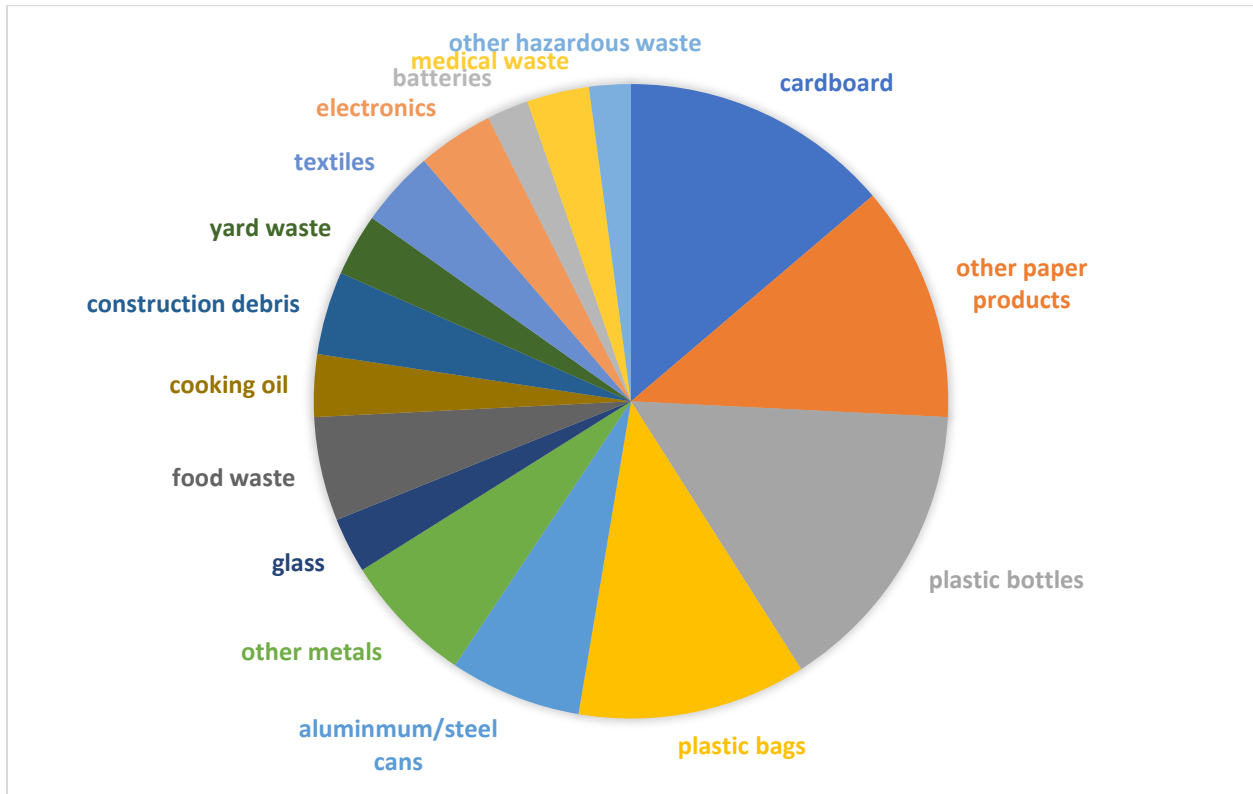
8. What volume of waste does your organization produce?



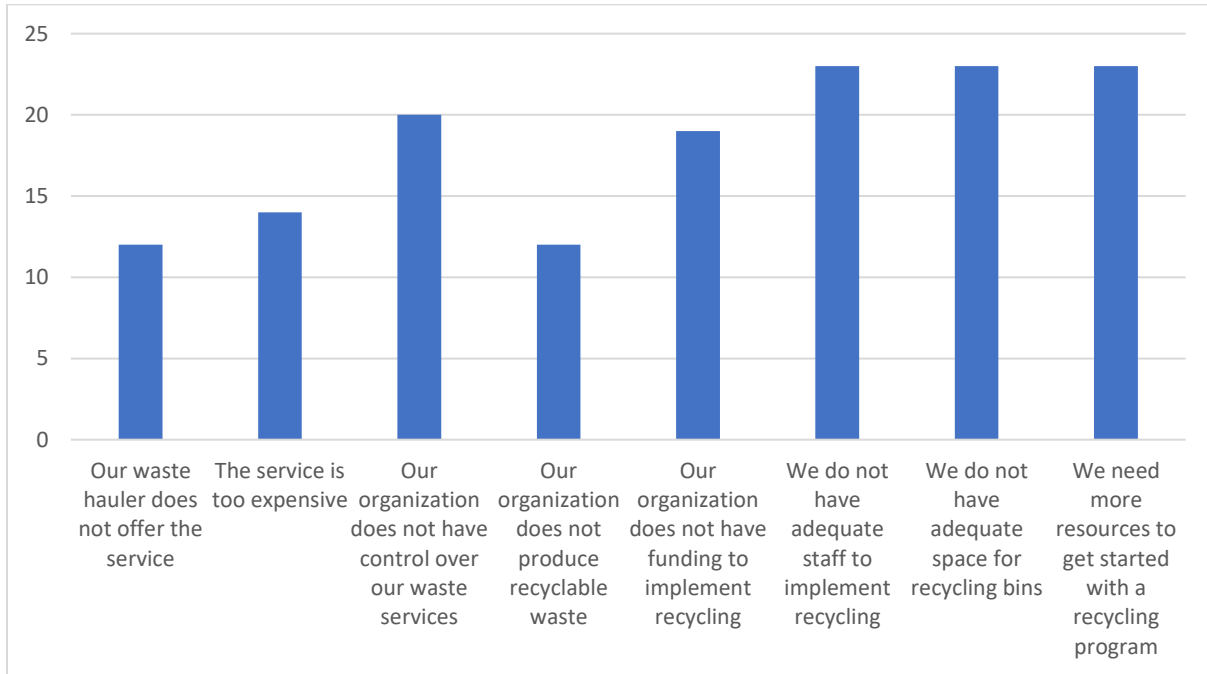
9. What type of waste does your organization generate? Check all that apply



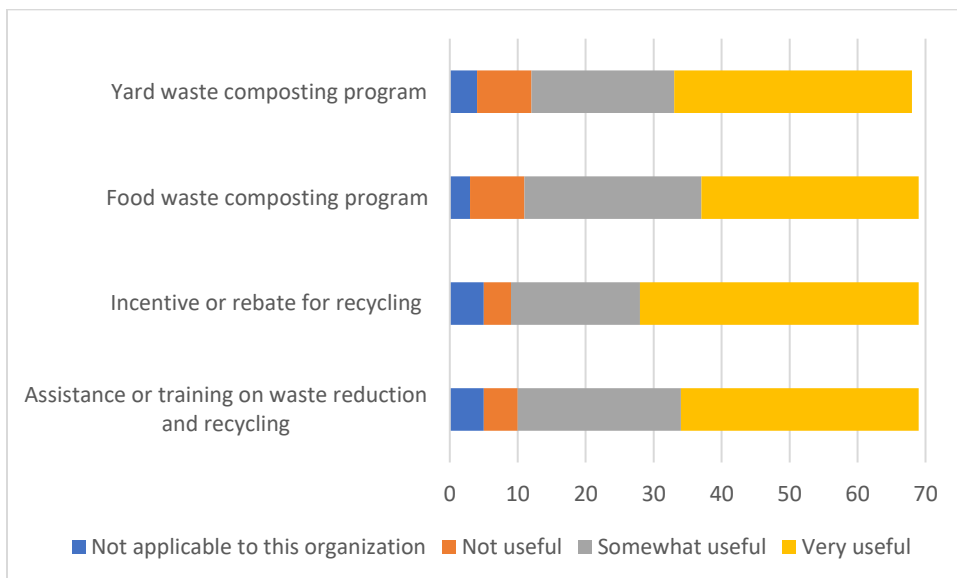
10. What type of waste does your organization recycle? Check all that apply



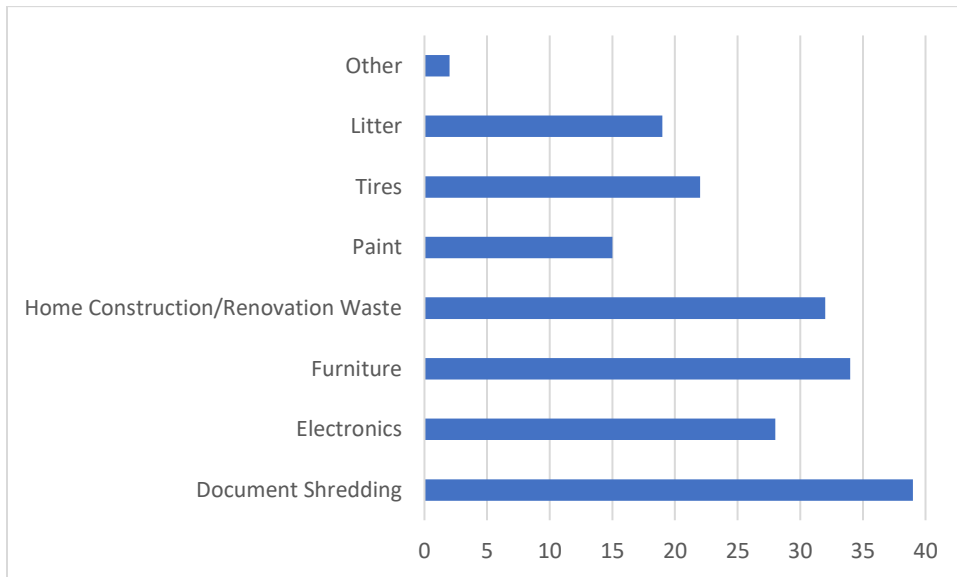
11. If your organization does not recycle, what are some issues preventing it? Check all that apply



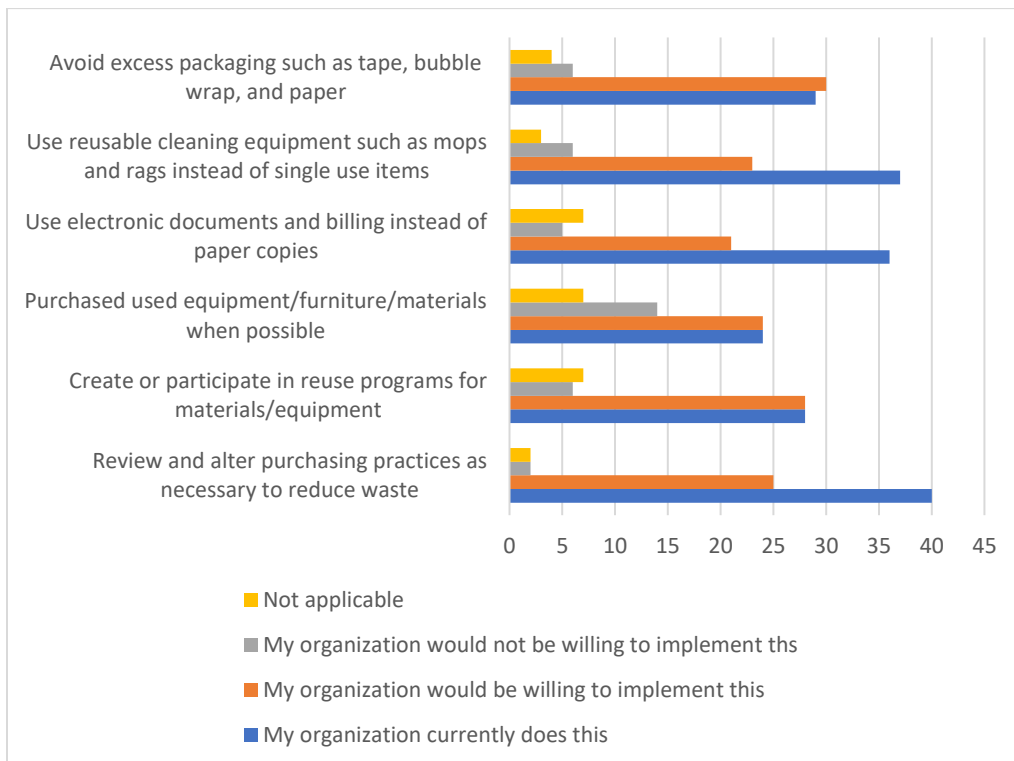
12. How useful would the following resources be to your organization?



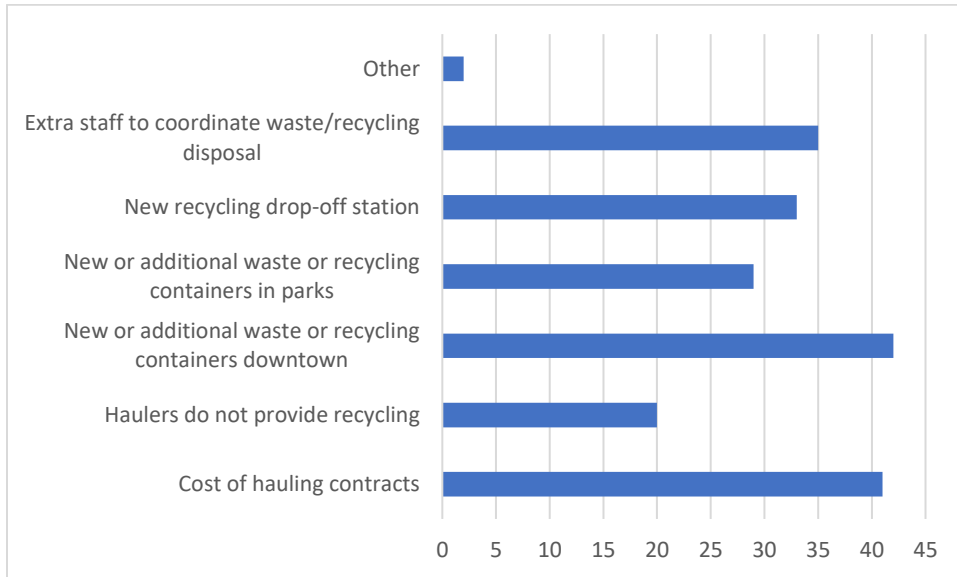
13. Is your organization interested in hosting or assisting with public pick-up/recycling events for the following types of waste? Check all that apply:



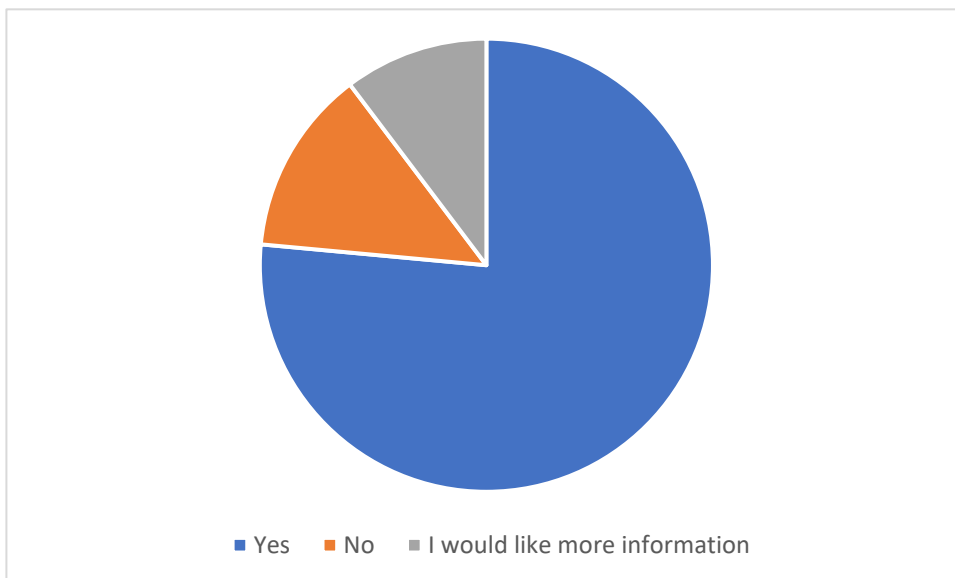
14. Waste reduction is also an important part of this management plan. Please answer the following about waste reduction as it relates to your organization:



15. What do you see as the biggest waste and recycling issues you face within your community in the next 5 – 20 years? These suggestions will be used to analyze needs and plan for the next future. You will not be required to make changes based your feedback, but it will help staff identify needs and seek out resources/supports in an effort to better meet your community’s waste and recycling needs.



16. Would your organization be interested in hosting and/or sponsoring a plastic film or foam recycling collection point?



17. If you could change one thing in Jackson County related to solid waste and recycling please tell us your top suggestion here:

回收利用价值的东西 translation: Recycle valuable things
Do a good job of solid waste classification publicity and environmental protection publicity, and do a good job of fixed placement. Dispatch more personnel to target area management and recovery
Recycling is a very profitable job.
Reuse solid waste to produce new usable materials
Clearly marked recycling bins
促进固体废物回收利用处置投资、强化企业环境信用评价、形成固体废物管理技术示范模式 translation: Promote investment in solid waste recycling, utilization and disposal, strengthen corporate environmental credit evaluation, and form a solid waste management technology demonstration model
N/A
regional compost facility
Waste Utilization
Unified garbage disposal and unified management.
Environmental protection and sanitation are the most important.
Will the waste disposal process after recycling cause new secondary waste?
I haven't thought about it yet
Appropriate subsidies can be provided.
Build one more garbage station.
Equip specialized recycling personnel for on-site training to strengthen recycling awareness and benefits
Strengthen classification and pollution prevention.
N/A
waste sorting
Recycling these wastes to reduce household waste can beautify the environment
Establish a comprehensive waste recycling system
废物回收 translation: waste recycling
Proper garbage classification
Recycling garbage
Sustainable development
Except for recyclable garbage, the rest can be collected.
We will strengthen the careful management of industrial waste
Take advantage of the different strengths of each company
classification
Set up a recycling bin at a designated location.
Refuse classification
N/A

Disposal companies should supply containers to keep paper dry
High recycling efficiency is required
The harmfulness of promoting environmental destruction behavior.
Start with yourself to care for the environment and save resources
Can be placed in the community recycling bins, and then give. The corresponding points are converted into things.
If something related to solid waste and recycling can be changed, I hope to strengthen environmental education for residents, raise their environmental awareness, and encourage more people to actively participate in the classification and recycling of solid waste. This can better protect the environment and achieve sustainable development

18. If you have any other comments please let us know:

Environmental protection should be done by oneself.
Recycling solid waste into new materials for recycling
Stable drop location and timely cleanup
目前暂时没有 translation: None at the moment
N/A
Bookstore has a parking lot off Forest - could be used for drop-offs when store is closed, but not storage (no room). I receive some notices at heysar41@yahoo.com
nothing
Is recycling also a kind of recycling?
It is recommended to avoid the generation of secondary unnecessary garbage in the garbage disposal process.
I haven't thought about it yet
It can increase publicity and attract more organizations to participate.
yes
Intensify recycling promotion and protect the environment, everyone has a responsibility
Strengthen classification and pollution prevention.
There is no more.
Establish a comprehensive waste recycling system
回收利用 translation: recycling
There is no
sustainability
Basically, I have no opinions. It's all right.
Promote the classification and recycling of social waste
absence
Classification of recyclable and non-recyclable waste
N/A

Burriss Disposal says they take mixed recycling to Southern Recycling and it is separated there. Don't know any details about that process. If obvious paper recycling is placed on top in trash container to keep dry, it is thrown in with the trash because it is not in the blue container. Must use another plastic bag to keep paper dry in the blue recycling bin in order to recycle it.

Enhance people's awareness of waste recycling

Strengthen awareness of environmental protection publicity and popularization work.

Strengthen supervision and management and government investment

I think we can strengthen the publicity and education on the classification and recycling of solid waste, so that more people can understand its importance and correct treatment methods, which can improve recycling efficiency and reduce environmental pollution

## 9. Management Strategies

Note this section contains all management strategies suggested for the Greater Egypt Region (Franklin, Jefferson, Jackson, Perry, and Williamson Counties) since any upgrades to the waste & recycling industry in any county will benefit the entire region.

Table 20 - Solid Waste and Recycling Management Strategies, Equipment Needs, and Project Ideas

Strategy	Details/comments and potential benefits	Proposed by	Implementation Timeframe	Cost Estimate	Potential funding source
<b>Curbside recycling program</b>	Curbside recycling is the most effective way to increase recycling and divert waste from landfills, however this is also a costly service that would likely have to be added to residents' bills. Many municipalities do not want to raise rates for their residents and have opted not to have this service, even if their contracted hauler offers it. Contamination is still an issue in curbside programs, but it is easier to manage than drop-off sites.	multiple municipalities	1-20 years. Services are already available from multiple haulers, up to each city/village to implement a program.	Contract varies depending on hauling company and size of municipality.	Curbside recycling is largely up to the municipality and hauling company that they contract with. Some haulers do not have the proper equipment to offer recycling as part of their services. Haulers that do offer curbside recycling usually charge an additional fee for the service, that would have to either be paid by the municipality or passed on to residents as a part of their trash bill.
<b>Recycling drop-off bins</b>	While many members of the public have interest in more recycling stations, most municipalities have stated they are not effective. Unstaffed drop-off sites become filled with bag contamination, unrecyclable trash, and large dumped items. It becomes a large burden on the agency managing the site to sort out the trash. For drop-off stations to be a viable solution to increase recycling, they need to be staffed or have security cameras in place with a system to enforce the rules, which adds additional costs.	multiple municipalities, public surveys	1-20 years. Services are already available from multiple haulers, up to each city/village to implement a program.	Green compartment trailers- \$20,000 each, Cardboard cage trailer- \$5,000, trailer maintenance, staff time, and dumping cost per year- \$20,000 per site. Some haulers own trailers that municipalities can pay for as a part of their waste contract and is maintained by the company, the fee for this service varies by contract but is around \$500/month.	EPA Solid Waste Infrastructure for Recycling Grants for Communities, Drop-off Recycling Program Grant
<b>More frequent dumping of current recycling stations</b>	A frequent complaint in the public surveys is that current recycle drop-off stations are not emptied frequently enough. Bins are often full and overflowing and people spend time loading their recyclables and driving to the site, only to be unable to get rid of their items.	public surveys	1-20 years.	Depending on the hauler and contract, the cost to maintain a recycling drop off sites ranges from \$400-1,7000 per month, adding additional days to empty the bins would raise this cost.	Increase resident trash/recycle bills, budget from municipal funds in other ways, grant programs

Strategy	Details/comments and potential benefits	Proposed by	Implementation Timeframe	Cost Estimate	Potential funding source
<b>More electronics recycling events</b>	Multiple cities as well as comments from the public surveys have shown there is community interest in recycling more electronics. There are few places that take these items and cost varies.	multiple municipalities, Support from CRC Southern Recycling	1-20 years	Cost would vary by amount of electronics recycled. CRC is interested in helping communities set up drives, they would be able to offer quotes on the price. There may also be future opportunities from electronics manufacturers in accordance with the Consumer Electronics Recycling Act.	Depending on who coordinates the drive, funding could come from manufacturers, donations, grants, or municipal funds.
<b>More household hazardous waste events</b>	Currently, the southern Illinois region only has one annual household hazardous material pickup event, sponsored by the Jackson County Health Department and IEPA. It is hugely popular but can be difficult for some people to attend.	Municipal & public surveys	1-20 years. JCHD has procured funds to host two events in 2024 – November and June.	Cost to host a single day event is around \$60,000-\$70,000 if self-funded. To host an event, interested parties can also apply to IEPA and they fund it if selected	County funds, grants, IEPA JCHD typically is able to host events with funds generated from landfill tipping fees that go into the county solid waste fund
<b>More opportunities for lightbulb recycling</b>	Currently there are only locations that recycle CFL bulbs and holiday lights. There are no options for incandescent, florescent, or LED lights in the region. Typically, only lights that contain mercury are recycled for environmental health reasons. It may not be cost effective to recycle other bulb types, but having more locations to recycle mercury-containing bulbs would be beneficial.	Mt. Vernon	1-20 years	Variable depending on scale of program and end location of bulbs. (collection and shipping costs)	Grants, partnership with electric providers
<b>Education/Outreach campaign to raise awareness on recycling contamination &amp; other local issues</b>	Every entity that is a part of the recycling industry, from haulers to municipalities to have stated that recycling contamination is a huge issue. Materials have to be loose to be sorted at recycling processing centers. Items in bags significantly increase staff time on the sorting lines, bags and other unwanted items can clog machinery and create other problems. Other contaminants reported at drop off sites have ranged from household waste to cat litter and dumped furniture. Staff time and landfill fees to sort these items can also be significant. Several entities have expressed interest in education programs to try and alert the public of this issue and increase proper use of recycling services	JCHD	1-3 years. JCHD intends to apply for funds for various outreach campaigns in the next few years	Funds needed to be determined. Likely \$100,000-500,000.	Consumer Recycling Education and Outreach Grant Program
<b>Create a food waste composting program in southern Illinois</b>	There is a growing interest in food waste composting in the area, a possible location would be in the Carbondale area of Jackson County. There is some interest from the City depending on feasibility and cost-effectiveness	JCHD, public surveys, Food Recovery & Waste Reduction Initiative	1-20 years	Cost estimate unknown, a feasibility study would likely have to take place before any programs are set up. These studies are typically \$150,000 or less.	Economic development grants may fund such a project if it creates new jobs in the region

Strategy	Details/comments and potential benefits	Proposed by	Implementation Timeframe	Cost Estimate	Potential funding source
<b>Property clean-up assistance for elderly/disabled residents</b>	Some residents may not be physically able to remove large items from their homes or property. It was suggested to set up some sort of program for residents to be able to register for assistance to participate in community clean up days	public comment	1-20 years	Cost would vary by	Could potentially be part of the public works budget, funded through refuse/recycling fees. Grant program may cover startup costs of such a program
<b>City clean up days for municipalities that do not currently host such an event</b>	Bulk item pickup and community dump events are both largely popular in areas that currently have them. It prevents illegal dumping and junk buildup in yards by providing residents with a free way to get rid of unwanted items.	municipal surveys	1-20 years	would vary based on size of community and amount of waste collected	County or municipal funds, donations or sponsorship
<b>Yard Waste collection programs for municipalities that do not currently have one</b>	Lack of yard waste collection programs or dump sites has been mentioned. Feasibility of implementing a program depends on whether the community has a municipal burning location, or if New Earth Compost would accept additional contracts.	public surveys, municipal surveys	1-20 years	Varies by community size. New Earth Compost typically charges by the truckload, but municipal contracts may be different. Piling and burning by city staff would depend on staff needed and their rates of pay.	County or municipal funds, donations or sponsorship
<b>Municipal or county yard waste collection sites</b>	There has been some interest in county or local compost sites for yard waste where residents can drive up and dump their yard waste at a central location, and be able to take or purchase compost later.	public surveys, meeting comments	1-20 years	Cost will vary by area needed, permit types, and equipment needed. Feasibility study would likely have to be [performed first. These studies are typically \$150,000 or less.	County or municipal funds, grant for initial startup costs may be possible
<b>Tire collection events</b>	Old tires are a large problem in both rural and urban areas. They are often dumped illegally, or left sitting in yards. Their ability to hold water for breeding mosquitos also make tire waste a public health concern.	public comments, municipal surveys	1-20 years	Collection & disposal costs vary by size of tire and disposal facility fees. Regular vehicle tires typically cost \$2-7 per tire to recycle. Currently, Midwest Tire Disposal in Benton is the only facility in the region that accepts tires	Sponsorships from local tire companies or dealerships, county or municipal funds, possibly a grant for one-time events
<b>New tire recycling center in Jackson County</b>	The abundance of tires in southern Illinois is a widely documented problem. A new facility to accept and process them may eliminate the issues of illegal dumping of tires and tires being left outside for long periods to collect water and allow for mosquito breeding.	City of Murphysboro	5-20 years	Variable depending on size of facility, but likely in the hundreds of thousands to millions of dollars in construction.	Economic development grants, or funded by private company if one chooses to build a new facility

Strategy	Details/comments and potential benefits	Proposed by	Implementation Timeframe	Cost Estimate	Potential funding source
<b>Incentives against using single use plastic &amp; Styrofoam retail stores and restaurants</b>	Multiple comments have expressed concern about single use plastics from retails and the need to reduce this waste. Some states and cities around the country have enacted bans and fees against single use plastic bags and other items. The feasibility of a similar ban in southern Illinois could be explored.	public surveys	1-20 years	This would likely be an ordinance or code enacted by county boards and/or city councils. Would probably not have a direct cost on the community.	NA
<b>Programs to reduce illegal dumping in rural and urban areas</b>	Multiple comments during meetings and from surveys have expressed concerns with illegal dump sites, especially along roads and waterways. With the large amount of unpatrolled rural roads, the feasibility of catching dumpers in the act is not a realistic solution. However, offering more community dump day events may eliminate some of the activity.	Public surveys, meeting comments	1-20 years	would vary based on size of community and amount of waste collected	County or municipal funds, donations or sponsorship
<b>Trash &amp; Recycling cans downtown and in public parks</b>	Many towns in the region do not have waste containers in town or in parks. This could help eliminate some of the littering problem. However, the downside to large outdoor trash cans is that some people may use them to dump their own household waste. Anecdotes from some parks and recreation staff have stated that as a problem in some areas.	surveys	1-20 years	Depends on # of containers needed and staff time to empty them. Permanent outdoor receptacles cost around \$400-1,000 each depending on design and brand.	city budgets, grant programs
<b>Community reuse center</b>	Suggestions from planning team members in meetings have brought up the idea of a community center to share reusable goods such as furniture, paints, tools, and other items. There are already several thrift stores around southern Illinois, and paint swaps have occurred in the past. Logistics and ownership of a new facility have not been discussed in detail.	Meeting comments	1-20 years	Varies on size and location of such a facility. A brand new construction project could be millions of dollars, upgrading an existing thrift store or other business would be significantly less.	This would likely be a collaboration of government funds, non-profit organization funds or volunteer hours, donations, and grants
<b>Paint recycling events</b>	There is a paint factory in Nashville, IL (GBD International) that does recycling. They do not currently have a public program; it has been suggested to reach out to them and see if a community partnership would be possible in the future.	Perry County	1-20 years	Would have to get quotes from company if they agree to host events	County or municipal funds, possibly a sponsorship or donation
<b>Improvements to CRC recycling facility</b>	CRC would like to add various equipment to increase their in-house processing capabilities: shredder and granulator for rigid plastics, EPS densifier for Styrofoam. They would like to add areas for the public to drop off plastic bags and PVC vinyl siding for recycling. CRC is searching for ways to help communities host electronics drives. The company is also looking for solutions to improve business relations with other local recycling centers and increase cost savings for all parties.	CRC Southern Recycling	1-20 years	Processing equipment would have to be estimated from a contractor/engineer. Costs depend on size and capacity of equipment needed.	The Recycling Partnership Grants for Processors/Materials Recovery Facilities (MRF), Illinois CDBG, DRA SEDAP

Strategy	Details/comments and potential benefits	Proposed by	Implementation Timeframe	Cost Estimate	Potential funding source
<b>Improvements to Progress Port recycling facility</b>	Progress port needs additional trailers to increase their capacity to provide recycling for businesses in the community. They would like the opportunity to recycle electronics as well as plastics 3-7 but there is currently nowhere to take that material. They would like additional funds to cover the costs of glass recycling and the cost of gaylords for paper recycling.	Progress Port	1-20 years	Cost to purchase a trailer and modify it for recycling is around \$4-6,000 per trailer	The Recycling Partnership Grants for Processors/Materials Recovery Facilities (MRF), Illinois CDBG, DRA SEDAP
<b>Improvements to Do Your Part Recycling Facility</b>	Do Your Part would like grant funds to hire and retain workers. Equipment needed: a new baler to bale cardboard and plastic, funds to repair or replace aging forklift, an enclosed trailer or box truck for hauling metal. An awning/overhang is needed to store materials before they are shipped out. With this equipment, Do Your Part Recycling would be able to implement residential hauling services to their business to increase their capacity to make a profit and retain staff without the need for continued grants. Currently Do Your Part does not accept glass to recycle because the company they took it to stopped operating. They are considering accepting glass again if they can take it to CRC with other materials, equipment needed for this to be possible is an industrial glass crusher that can break the glass and convey it to safe storage until shipment.	Do Your Part Recycling	1-20 years	Box truck cost ranges from \$30-80,000 depending on size and condition. New cardboard balers range from \$17-25,000. Forklift prices range depending on payload capacity, may be up to \$50,000. Glass crusher costs would depend on vendor and machine capacity.	The Recycling Partnership Grants for Processors/Materials Recovery Facilities (MRF), Illinois CDBG, DRA SEDAP

## 10. Funding Opportunities

The following table shows potential funding opportunities for waste, recycling, infrastructure, and economic development projects. Note this list may not contain every possible grant available, and funding opportunities change from year to year. It is always good practice to do your own research on a specific project before choosing a grant program.

Table 21

Granting Agency	Program Name	Details	Link
US EPA	Solid Waste Infrastructure for Recycling Grants for Communities	Establish or expand infrastructure, capacity, or end-use market for recyclable materials	<a href="https://www.epa.gov/infrastructure/solid-waste-infrastructure-recycling-grants-communities">https://www.epa.gov/infrastructure/solid-waste-infrastructure-recycling-grants-communities</a>
US EPA	Consumer Recycling Education and Outreach Grant Program	inform the public about recycling/composting programs, increase collection rates, decrease contamination	<a href="https://www.epa.gov/infrastructure/consumer-recycling-education-and-outreach-grant-program">https://www.epa.gov/infrastructure/consumer-recycling-education-and-outreach-grant-program</a>
The Recycling Partnership	Residential Drop-Off Recycling Grant Program	To develop and improve facilities and signage at drop off recycling sites	<a href="https://recyclingpartnership.org/drop-off-recycling-program-grant/">https://recyclingpartnership.org/drop-off-recycling-program-grant/</a>
The Recycling Partnership	Residential Curbside Recycling Cart Grant	To advance recycling in communities through the implementation of cart-based curbside recycling	<a href="https://recyclingpartnership.org/recycling-cart-grant/">https://recyclingpartnership.org/recycling-cart-grant/</a>
The Recycling Partnership	Grants for Processors/Materials Recovery Facilities (MRF)	Grants for general MRF assistance, and various material-specific grants	<a href="https://recyclingpartnership.org/grants/">https://recyclingpartnership.org/grants/</a>
Illinois DCEO	Community Development Block Grants (CDBG)	Economic development grant, funds a wide range of projects that create and retain jobs in Illinois	<a href="https://dceo.illinois.gov/communitydevelopment/cdbg_programs.html">https://dceo.illinois.gov/communitydevelopment/cdbg_programs.html</a>
Delta Regional Authority	States' Economic Development Assistance Program (SEDAP)	SEDAP provides direct investments for basic public infrastructure, transportation infrastructure, business development with an emphasis on entrepreneurship, and workforce development.	<a href="https://dra.gov/programs/critical-infrastructure/sedap/">https://dra.gov/programs/critical-infrastructure/sedap/</a>
USDA	Composting and Food Waste Reduction Cooperative Agreements	assist local and municipal governments with projects that develop and test strategies for planning and implementing municipal compost plans and food waste reduction plans.	<a href="https://www.usda.gov/topics/urban/coop-agreements">https://www.usda.gov/topics/urban/coop-agreements</a>

## Appendix 1 – Notice of Planning

The following press release was published on the JCHD website and sent out to their media distribution list:



## NEWS

FOR IMMEDIATE RELEASE

January 31, 2024

**For more information contact:**

Angie Kuehl, Recycling Coordinator, [angiek@ichdonline.org](mailto:angiek@ichdonline.org)

Tyler Carpenter, GIS & Environmental Planning Director. [tylercarpenter@greateregypt.org](mailto:tylercarpenter@greateregypt.org)

**Jackson County Seeks Community Input at the Solid Waste and Recycling Planning Meeting**

(Murphysboro, IL) Jackson County Health Department, in collaboration with Greater Egypt Regional Planning and Development Commission, is currently working to update the Jackson County Solid Waste and Recycling Management Plan. This plan guides waste reduction, recycling, and waste hauling within the county. Under the Illinois Solid Waste and Recycling Act (SWPRA), Illinois counties are required to create a county solid waste plan. County plans are to include a recycling program, a full review of materials generated and collected, public outreach/recycling education, and to conduct strategic planning for handling wastes generated within the county, including hard to recycle items.

Those who live, work, or play in Jackson County that are also interested in working to improve waste and recycling efforts are invited to attend the Jackson County Solid Waste Planning Meeting scheduled on February 6, 2024 at 10:00 AM in the conference mtg. room in the rear building at the Jackson County Health Department, 415 Health Department Road, Murphysboro, IL. A Zoom option to attend is also available. Additionally, a Zoom only evening meeting option is available at 6:00 PM, and the link for both Zoom meeting times is the same and can be found at: <https://us02web.zoom.us/j/81862761780>

*This Plan will be updated in accordance with 415 ILCS 12 (Solid Waste Hauling and Recycling Program Act) and 415 ILCS 15(Solid Waste Planning and Recycling Act). This project has been funded through the Illinois Environmental Protection Agency (ILEPA) Solid Waste Planning Grant Program.*

###

---

P.O. Box 307  
Murphysboro, IL 62966-0307  
Phone 618/684-3143  
Fax 618/684-6023

Stay Connected:

[www.ichdonline.org](http://www.ichdonline.org)

 [facebook.com/JCHDonline](https://facebook.com/JCHDonline)  
 [twitter.com/Jchealthdept](https://twitter.com/Jchealthdept)

# Jackson County to update Solid Waste and Recycling Management Plan

By THE SOUTHERN STAFF Feb 1, 2024 | Updated Mar 9, 2024

---

MURPHYSBORO — Jackson County Health Department, in collaboration with Greater Egypt Regional Planning and Development Commission, is currently working to update the Jackson County Solid Waste and Recycling Management Plan. This plan guides waste reduction, recycling, and waste hauling within the county.

Under the Illinois Solid Waste and Recycling Act (SWPRA), Illinois counties are required to create a county solid waste plan. County plans are to include a recycling program, a full review of materials generated and collected, public outreach/recycling education, and to conduct strategic planning for handling waste generated within the county, including hard to recycle items.

---

## Appendix 2 – Meeting Agendas and Minutes

Meeting 1 – 9/26/23



**Public Health**  
Prevent. Promote. Protect.  
Jackson County Health Department



---

### Jackson County Solid Waste and Recycling Plan

#### Meeting 1

September 26, 2023

10:00 AM (In-person/online)

6:00 PM (Online only)

[Zoom Meeting Link \(click\)](#)

#### AGENDA

- 1.) Welcome and Introductions
- 2.) Planning Process
  - a. Advisory Committee
  - b. Municipal Participation
  - c. Prior Plans
- 3.) Current Planning
  - a. Waste Generation/Composition
  - b. Infrastructure
  - c. Materials Management
- 4.) Public Education and Outreach
- 5.) Future Planning and Timeline
- 6.) Adjourn



## **Jackson County Solid Waste and Recycling Plan - Minutes**

September 26, 2023 10:00AM

Jackson County Health Department- Rear Room and Virtual (Zoom)

### **In attendance**

20

Tyler Carpenter with Greater Egypt opened the meeting with introductions of staff and attendees. The Jackson County Recycling Coordinator, Angie Kuehl, introduced the history of solid waste and recycling in the county. A review of the Solid Waste and Recycling Act occurred which detailed the purpose and requirements for both solid waste and recycling.

The planning process was detailed which included partnerships, information requests, plan narrative, GIS/mapping, and meetings. While Greater Egypt will take the planning lead for the project, the agency will act in conjunction with the Jackson County Solid Waste Advisory Committee and the Recycling Coordinator. Discussion included the Southern Illinois landfill's expansions and potential needs for additional facilities.

Participation in the plan is required by the communities in the county. Since some may not be able to attend meetings, a small questionnaire will be sent to allow them to be eligible for the plan. The Advisory Committee will be formed in the near future to provide input and progress plan development.

Plan narrative will be based on information retrieved and findings from potential analyses. Greater Egypt also plans to develop an interactive map to allow the public to easily locate waste/recycling centers and other information.

Along with Advisory Committee meetings, staff will hold at least one public meeting. This will likely include maps, figures, and a presentation. The Public Outreach and Education component of the planning process will involve the school districts and other environmental groups in the county. Special pickup events and days were discussed. Digital billboards were proposed as a potential measure to display events. Faith-based organizations were discussed as excellent places to involve the public with recycling efforts.

Staff reviewed the timeline for the project. The goal is to complete the plan by December, 2024. Staff also detailed: public notice of planning start, advisory committee details, review and adoption, next steps and future planning.

Meeting adjourned.



## Jackson County Solid Waste and Recycling Plan - Minutes

September 26, 2023 6:00 PM

Virtual (Zoom)

### In attendance

5

Tyler Carpenter with Greater Egypt opened the meeting with introductions of staff and attendees. The Jackson County Recycling Coordinator, Angie Kuehl, introduced the history of solid waste and recycling in the county. A review of the Solid Waste and Recycling Act occurred which detailed the purpose and requirements for both solid waste and recycling.

The planning process was detailed which included partnerships, information requests, plan narrative, GIS/mapping, and meetings. While Greater Egypt will take the planning lead for the project, the agency will act in conjunction with the Jackson County Solid Waste Advisory Committee and the Recycling Coordinator. A discussion regarding compost areas occurred. One suggestion was looking into areas around maintenance buildings to compost.

Participation in the plan is required by the communities in the county. Since some may not be able to attend meetings, a small questionnaire will be sent to allow them to be eligible for the plan. The Advisory Committee will be formed in the near future to provide input and progress plan development.

Plan narrative will be based on information retrieved and findings from potential analyses. Greater Egypt also plans to develop an interactive map to allow the public to easily locate waste/recycling centers and other information.

Along with Advisory Committee meetings, staff will hold at least one public meeting. This will likely include maps, figures, and a presentation. The Public Outreach and Education component of the planning process will involve the school districts and other environmental groups in the county.

Staff reviewed the timeline for the project. The goal is to complete the plan by December 2024. Staff also detailed: public notice of planning start, advisory committee details, review and adoption, next steps and future planning.

Meeting adjourned.



---

**Jackson County Solid Waste and Recycling Plan  
Meeting 2  
February 6, 2024  
10:00 AM (In-person/online) – JCHD Building 2  
415 Health Dept Rd, Murphysboro, IL 62966  
6:00 PM (Online only)**

**[Zoom Meeting Link \(click\)](#)** *Link is the same for both meetings*

**AGENDA**

- 1.) Welcome and Introductions
- 2.) Review - Illinois Solid Waste and Recycling Act
- 3.) Review - IEPA Solid Waste Grant
- 4.) Planning Process
  - a. Advisory Committee
  - b. Municipal Participation
  - c. Priors Plans
- 5.) Current Planning
  - a. Waste Generation/ Composition
  - b. Infrastructure
  - c. Materials/ Management
  - d. Local Questionnaires/Surveys
- 6.) Timeline and Future Meeting(s)
- 7.) Comments and Questions
- 8.) Adjourn



## Jackson County Solid Waste and Recycling Plan - Minutes

February 6, 2024, 10:00 AM

In-person and Virtual (Zoom)

### In attendance

Nel Batrell, Jackson County Board; Lauren Becker, City of Carbondale Sustainability Coordinator; Kelsey Bowe, Greater Egypt; Tyler Carpenter, Greater Egypt; Jane Cogie, Carbondale Sustainability Commissioner; Blake Fox, Republic Services; Kerri Gale, JCHD; Loren Gray, CRC Recycling; Bart Hagston, Jackson County Health Department (JCHD); Sarah Heyer, Carbondale Sustainability Commissioner; Jessica Hubbard, JCHD; Jennifer Kenner, Republic Services; Angie Kuehl, JCHD; Sheila Koppert, CRC Recycling; Aimme Lemrise, SIUC Sustainability; Faith Miller, County Board; Chaya Rice, SIU Student

Staff with Greater Egypt opened the meeting with introductions of staff. The Solid Waste & Recycling Act was briefly discussed. The planning review was given which included meeting information from the first meeting in September 2023, requirements for the municipalities, and grant amendments.

The Municipal Questionnaire was discussed. This document is still needed from the following communities: Campbell Hill, Elkhville, Gorham Grad Tower, and Murphysboro. Respondents detailed current solid waste and recycling practices. Comments were also discussed. Comments suggested a need for waste programs for certain items and new bins needed for recycling. Grants for recycling and solid waste have historically been awarded by Illinois DCEO. Staff will look at other options and detail them in the plan.

Staff discussed the planning document. The plan will include six main chapters: Introduction and County Background, Regional Plan Updates, Waste Generation and Composition, Materials Management, Public Education and Outreach, and Management Measures. Greater Egypt is developing a regional map application with focus on displaying waste and recycling facilities. This will be released in April. Much of the data in the plan is from statewide agencies and JCHD. JCHD coordinates the recycling programs of all schools in the county.

Staff discussed the residential survey in detail. This will be made available in March for residents of the county. Comments and suggestions will go into the plan. Incentives were discussed to gain interest in the survey. The county also expects to conduct a hauler and school survey as well. One management measure that was discussed was the need for a composting facility. The future timeline was discussed. The surveys will likely be completed by May along with a draft release. The final review will take place in August with a planning deadline in September.

Staff with CRC Recycling discussed new developments at the former Southern Recycling Center. This includes the transition to accept newer recyclable such as household appliances, electronics, industrial, and post-industrial materials. It may be possible for the facility to recycle solar panels in the future.

Meeting adjourned.



## Jackson County Solid Waste and Recycling Plan - Minutes

February 6, 2024 6:00 PM

Virtual (Zoom)

### In attendance

Kelsey Bowe, Greater Egypt; Tyler Carpenter, Greater Egypt; Markea Haywood, Alpha Kappa Alpha- Graduate Chapter; Angie Kuehl, Jackson County Health Department

Staff with Greater Egypt opened the meeting with introductions of staff. The Solid Waste & Recycling Act was briefly discussed. The planning review was given which included meeting information from the first meeting in September, 2023, requirements for the municipalities, and grant amendments.

The Municipal Questionnaire was discussed. This document is still needed from the following communities: Campbell Hill, Elkhville, Gorham Grad Tower, and Murphysboro. Respondents detailed current solid waste and recycling practices. Comments were also discussed. Comments suggested a need for waste programs for certain items and new bins needed for recycling.

Staff discussed the planning document. The plan will include six main chapters: Introduction and County Background, Regional Plan Updates, Waste Generation and Composition, Materials Management, Public Education and Outreach, and Management Measures. Greater Egypt is developing a regional map application with focus on displaying waste and recycling facilities. This will be released in April. Much of the data in the plan is from statewide agencies and JCHD.

Staff discussed the residential survey in detail. This will be made available in March for residents of the county. Comments and suggestions will go into the plan. The sorority will be able to provide assistance with promoting the survey. The county also expects to conduct a hauler and school survey as well.

The future timeline was discussed. The surveys will likely be completed by May along with a draft release. The final review will take place in August with a planning deadline of September.

Meeting adjourned.



---

**Jackson County Solid Waste and Recycling Plan  
Meeting 3  
August 22, 2024  
10:00 AM (In-person/online) – JCHD Building 2  
415 Health Dept Rd, Murphysboro, IL 62966  
6:00 PM (Online only)**

**[Zoom Meeting Link \(click\)](#)** *Link is the same for both meetings*

**AGENDA**

- 1.) Welcome and Introductions
- 2.) Planning Review
  - a. Meetings
  - b. Advisory Committee
  - c. Municipal Participation
- 3.) Survey Responses
  - a. Public
  - b. Hauler
- 4.) Public Education and Outreach
- 5.) Management Measures
- 6.) Remaining Schedule and Tasks
- 7.) Comments and Questions
- 8.) Adjourn



## Jackson County Solid Waste and Recycling Plan – Meeting Three Minutes

August 22, 2024, 10:00 AM

In-person and Virtual (Zoom)

### In attendance

8

### Staff Present

4

Tyler Carpenter (Greater Egypt) opened the meeting with introductions of staff and attendees. Staff reviewed the planning completed since the last meeting in early 2024. Staff reviewed participation from communities in the county. The remaining municipalities will be contacted to meet the participation requirement.

Staff reviewed the Public and Hauler Surveys. Most respondents were from the City of Carbondale (61). Burris Disposal is the hauler for most of the respondents. The most important waste and recycling issues mentioned were: needing a food scrap composting program, needing a compost/yard waste facility, more recycling bins in areas, and community needs a recycling drop off location. The importance of the following components are considered very important to respondents: household hazardous waste events, business and recycling, and recycling at schools and public events.

Outside of the City of Carbondale which collects recycling and solid waste, Four businesses replied to the hauler survey. Most of them operate beyond Perry County. Republic Services offer most services in the area including commercial trash and recycling. Hauler responses were reviewed and will be detailed in the plan.

Staff reviewed the public education and outreach component needed for the plan. This will include information and messaging, public meetings, and waste pickup events. Management measures were also discussed. These will be needed from the communities and Advisory Committee. The remaining planning timeline was presented.

Meeting adjourned.



## Jackson County Solid Waste and Recycling Plan – Meeting Three Minutes

August 22, 2024, 6:00 PM

Virtual (Zoom)

### In attendance

1

### Staff Present

2

Tyler Carpenter (Greater Egypt) opened the meeting with introductions of staff and attendees. Staff reviewed the planning completed since the last meeting in early 2024. Staff reviewed participation from communities in the county. The remaining municipalities will be contacted to meet the participation requirement.

Staff reviewed the Public and Hauler Surveys. Most respondents were from the City of Carbondale (61). Burriss Disposal is the hauler for most of the respondents. The most important waste and recycling issues mentioned were: needing a food scrap composting program, needing a compost/yard waste facility, more recycling bins in areas, and community needs a recycling drop off location. The importance of the following components are considered very important to respondents: household hazardous waste events, business and recycling, and recycling at schools and public events.

Outside of the City of Carbondale which collects recycling and solid waste, Four businesses replied to the hauler survey. Most of them operate beyond Perry County. Republic Services offer most services in the area including commercial trash and recycling. Hauler responses were reviewed and will be detailed in the plan.

Staff reviewed the public education and outreach component needed for the plan. This will include information and messaging, public meetings, and waste pickup events. Management measures were also discussed. These will be needed from the communities and Advisory Committee. The remaining planning timeline was presented.

Meeting adjourned.

## Appendix 3 – Survey flyers and other event publications

**Public Survey Alert!**



**JCHD encourages community input on our 20 year update to the Jackson County Solid Waste & Recycling Management Plan**

**Scan the codes below to take the survey, 10 lucky participants will be chosen to win either a new compost bin or rain barrel!**

**English Version:**



**Versión en Español:**



This Plan will be updated in accordance with 415 ILCS 12 (Solid Waste Hauling and Recycling Program Act) and 415 ILCS 15 (Solid Waste Planning and Recycling Act). This project has been fully funded through the Illinois Environmental Protection Agency (IEPA) Solid Waste Planning Grant Program.



**Public Health**  
Prevent. Promote. Protect.  
Jackson County Health Department



Survey flyers and other info at CRC Southern Recycling. Photo by Kelsey Bowe



Right: Survey Flyer at the Grand Ave Recycling drop-off station in Carbondale. Photo by Kelsey Bowe

Survey information and other waste disposal events, flyer published by JCHD in the Carbondale Times

**BRIEFLY**

She made trips to 2010 and Afghan a work- in Ka-  
 be able to drop off prescription and over-the-counter medications (pills, creams, and patches) for disposal. Items not accepted include liquids, needles and inhalers.  
 START workshop will be on-site to collect confidential documents to be shredded at their secure facility. There will be on-site shredding at this event, only by secure pickup of documents. There is a limit of two boxes per participant. Examples of paper items that residents can bring for shredding include bank statements, medical and insurance forms, personal files, old tax forms and receipts. Paper clips and staples are acceptable, but binders, binder clips, magazines and junk mail are not acceptable.  
 Items from businesses, schools, governments and other large generators will not be accepted. Assistance will be available to those needing help removing items from their vehicle.

**Businesses sought for job fair at CCHS**

The Carbondale Chamber of Commerce, in collaboration with the city of Carbondale and Carbondale Community High School, will hold a joint job fair aimed at connecting local businesses with CCHS students.  
 The event will take place from 10 a.m. to 3 p.m. May 7 at Carbondale Community High School.  
 We are thrilled to partner with the city of Carbondale and Carbondale Community High School for our third annual job fair. William Cox, director of Carbondale Chamber of Commerce. "This event is a fun- form for businesses to see the potential of our high school students while offering employment opportu- nities across various industries including retail, hospital care and education. We encourage all interested parties to participate in

## Shred & Med Disposal Day



**Saturday  
April 27, 2024  
8am - Noon**

**Jackson County Health Dept  
415 Health Dept Rd  
Murphysboro, IL 62966**

Sign up for this event at  
[www.jchdonline.org](http://www.jchdonline.org)  
or call 618-684-314 ext. 128.

**County Waste & Recycling Survey**

if you live, work, and/or play in Jackson County, please let us know your thoughts about waste and recycling by taking this short survey.

English Version: 

Veración en Español: 

**Free & Confidential Document Shredding**

- Document shredding provided by S.T.A.R.T.
- No on-site shredding.
- Limit 2 boxes per person.
- No business waste.

**Free & Safe Disposal of Unwanted Medication**

Prescriptions and over-the-counter medicines, including pills, creams and patches

**NO liquids, needles, or inhalers.**

Residents interested in medicine mail back programs can visit: <https://safemedmail.com> OR <https://www.med-project.org> for more information.

**Questions?**  
Visit [www.jchdonline.org](http://www.jchdonline.org)  
or call 618-684-3143 ext. 128





JALC MEDIA SERV

The John A. legs speech te uses to success gram's first-ye tion. The tea in the Illinois giate Foren tion State F and ranke events. Attl Pat Idzik, Dennis Re on by stud and awan deduce collenge i Stude competi len Col matic i fifth in Bogdar promp ston, 1 Misch in IPT Th ed at



All vaccines, including flu, covid, and HPV, will be available in the front building.  
 Please schedule an appointment online at [www.jchdonline.org](http://www.jchdonline.org).  
 Carbuide services offered by request. Most insurances are accepted.  
 For more information on vaccines or to schedule an appointment, contact 618-684-3143, ext. 128.

# CARBONDALE CLASSIC

## BAR 2 BAR PUTT PUTT GOLF



# Jackson County Sharps Disposal

Free, safe, secure disposal of medical sharps collection containers



## ACCEPTED Items

- Needles
- Syringes
- Auto-Injectors (i.e., EpiPen)
- Lancets



## NOT Accepted Items

- Prescription medications
- Inhalers
- Liquids
- Aerosol Cans
- Garbage
- Hazardous chemicals or waste

Free 1.4qt sharps collection containers provided at all locations!



## Locations >>

All locations are accessible inside during regular business hours.

### Shawnee Health - Murphysboro

7 Hospital Dr.  
Murphysboro, IL 62966  
M-F 8:30am - 5:30pm

### Shawnee Health - Carbondale

400 S. Lewis Ln.  
Carbondale, Illinois 62901  
M-F 8:30am - 5:30pm

### SIU Student Health Services

374 E Grand Ave.  
Carbondale, IL 62901  
M-F 8am - 4:30pm

### Jackson County Health Department

415 Health Department Rd.  
Murphysboro, IL 62966  
M-F 8am - 4pm

### Jackson County Ambulance Service

10169 Old Highway 13  
Murphysboro, IL 62966  
M-F 8am - 4pm

Looking for safe and secure disposal options for prescription medications, inhalers, or sharps?  
Visit [medtakebackillinois.org](https://www.medtakebackillinois.org) or call (844) 4-TAKE-BACK or (844) 482-5322.

618-684-3143 ext. 128

[jchdonline.org](https://www.jchdonline.org)



# HOUSEHOLD CHEMICAL COLLECTION EVENT

Saturday, Nov. 2, 2024  
8:00AM-3:00PM

## LOCATION:

Banterra Center  
(former SIU Arena)  
South Parking Lot

From US 51, turn west on Pleasant Hill Road, then north on Arena Drive



SCHEDULE AN APPOINTMENT



OPEN TO ALL ILLINOIS RESIDENTS  
APPOINTMENTS ARE REQUIRED



## ITEMS ACCEPTED

- Oil Based Paint
- Paint Thinner
- Pesticides
- Insecticides
- Herbicides
- Poisons
- Pool Chemicals
- Old Gasoline
- Adhesives
- Aerosol Products
- Polishes
- Unwanted medications
- Motor Oil
- Mercury
- Solvents
- Antifreeze
- Thermometers
- Thermostats
- Latex Paint
- Degreasers
- Rechargeable batteries
- Fluorescent & CFL Lightbulbs
- \*E-cigarettes/Vapes
- \*Propane Cylinders (20lbs. or smaller)
- \*Disposable Helium Tanks (14.9cu ft. or smaller)
- \*Mapp-Gas Cylinders (16oz.)



## NOT ACCEPTED

- Explosives
- Ammunition
- Fire Extinguishers
- Smoke Detectors
- Medical Waste
- Radioactive Material
- Fireworks
- Oxygen Clyinders
- Tires
- Alkaline Batteries
- Controlled Substances
- Lead Acid Batteries\*
- Electronics\*
- Appliances\*
- Needles\*
- Syringes\*

\*Contact us for local recycling options on these items.

No business, agricultural, industrial, or governmental wastes accepted. Do NOT bring empty containers.  
Keep wait times short by consolidating loads with friends and neighbors!  
Call for directions on containers of 5 GALLONS or more.

618-6843143 ext. 128
   
  
jchdonline.org



## Appendix 4 – Public Comment Period

The following notice was published in the Southern Illinoian on Saturday, October 19, 2024:

“Public Comment Period Notice: Jackson County Solid Waste and Recycling Management Plan

To meet the requirements of the Illinois Solid Waste Planning and Recycling Act (415 ILCS 15) Greater Egypt Regional Planning and Development Commission and Jackson County Health Department have prepared an update to the County Solid Waste and Recycling Management Plan.

The Public Comment Period will be from October 21, 2024 – January 21, 2025. The Plan draft will be available for review online at <https://greateregypt.org/solid-waste-planning/> and in person at the Jackson County Health Department rear building, 415 Health Dept Road. Murphysboro, IL 62966”

No public comments were received during this time.



### Greater Egypt Regional Planning and Development Commission

November 2, 2024 · 🌐

The Solid Waste and Recycling Management Plan Drafts for Jackson, Perry, and the Tri-Counties (Franklin, Jefferson, Williamson) are now available for public review and comments at <https://greateregypt.org/solid-waste-planning/>

The comment period will be open until January 23, 2025. If you would like to review the draft in person and provide written comments, you may do so at the following locations:

- Jackson County Health Department rear building, 415 Health Dept Road. Murphysboro, IL 62966
- Pinckneyville Community Center, 203 North Walnut Street, Pinckneyville, IL 62274
- Jefferson County Health Department, 4102 S Water Tower Place, Mt. Vernon, IL 62864
- Franklin County Courthouse, 100 Public Square, Benton, IL 62812
- Williamson County Administration Building, 407 N Monroe St., Marion, IL 62959

A public hearing was also held on December 3<sup>rd</sup>. The following notice was published in the Southern Illinoisan on November 30, 2024:

A public hearing regarding the draft of the Jackson County Solid Waste and Recycling Management Plan will be held on Tuesday December 3, from 4-6PM at the Jackson County Health Department Rear Building, 415 Health Dept Rd, Murphysboro, IL 62966. Comments regarding the plan can also be placed online at <https://greateregypt.org/solid-waste-planning/>.

It was also posted on the Greater Egypt Facebook page.

No public comments were received during the hearing



### Greater Egypt Regional Planning and Development Commission

December 3, 2024 · 🌐



🔊🔊 Public Hearing Notice! There are upcoming public hearings regarding each Solid Waste and Recycling Management Plan in the Greater Egypt region. If you have comments or questions about your County's Plan, please attend:

Jackson County: December 3rd 4-6PM

📍 Jackson County Health Department Rear Building  
415 Health Dept Rd, Murphysboro, IL 62966

Perry County: December 4th 10-11AM

📍 Pinckneyville Community Center, 203 N Walnut St.  
Pinckneyville, IL 62274

Tri-County (Franklin, Jefferson, Williamson): 10-11:30AM

📍 Greater Egypt Regional Planning and Development Commission  
3117 Civic Circle Blvd, Suite A  
Marion, IL 62959

Can't make it but want to provide input? Comments will also be accepted online until January 23rd at



GREATREGYPT.ORG

### Solid Waste Planning - Greater Egypt

Under the Illinois Solid Waste and Recycling Act (SWPRA), Illinois counties are required to create a County Solid Waste Plan every five years. These plans are required to include: A...



## **Appendix 5 – Jackson County Solid Waste Management Ordinance**

# **JACKSON COUNTY WASTE MANAGEMENT ORDINANCE**

**WHEREAS**, the Illinois Solid Waste Planning and Recycling Act, 415 ILCS 15/1 *et. seq.* (1994) (hereinafter referred to as the Act), mandates Counties to adopt and implement a plan for the management, disposal and reduction of solid wastes generated in their County; and

**WHEREAS**, in accordance with the Act, the County of Jackson, Illinois (hereinafter referred to as the County), through its County Board, has adopted a waste management plan; which plan must also include a County-wide recycling program; and

**WHEREAS**, the County recognizes recycling as a valuable, practical and essential method of waste stream reduction; and

**WHEREAS**, the present ordinance is intended to implement the County’s waste management plan; and

**WHEREAS**, the Jackson County Board finds that:

- A) Sanitary landfill capacity is limited; and
- B) Alternatives to and reduction in the reliance on sanitary landfills is vital to the needs of the County’s residents, businesses and environment; and
- C) Recycling of certain solid wastes is preferable to the disposal of these solid wastes; and
- D) Mandated recycling of certain solid wastes along with other related measures and incentives are needed in order to accomplish the County’s goals in reducing the solid waste stream in this County;

**NOW, THEREFORE, THE JACKSON COUNTY BOARD ORDAINS, AS FOLLOWS:**

### **SECTION I. Short Title**

The present ordinance is adopted; and shall hereinafter be known and cited as the “Jackson County Waste Management Ordinance”.

### **SECTION 2. Savings Clause**

All ordinances or parts of other ordinances in conflict with the provisions of this ordinance shall to the extent of the conflict be, and are, repealed; provided that nothing herein shall in any way excuse or prevent the prosecution of any provisions or existing violations of any ordinance, or parts thereof,

superseded by this present ordinance. Further provided that all decisions and actions made and all rights or privileges conferred in reliance on previous versions of this ordinance shall remain in full force and effect and not be affected by any adopted amendments or modifications of this ordinance.

### **SECTION 3. Definitions**

For purposes of this Ordinance, the following terms shall have the following meanings:

**Commercial Establishment Unit** means any building or any part of any building wherein commerce or business is conducted, both profit and not-for-profit, including but not limited to, stores, markets, offices, restaurants, shopping centers, theaters, schools, churches, government offices and manufacturing facilities.

**Composting** means the biological process by which microorganisms decompose the organic fraction of waste, producing a humus-like material that may be used as a soil conditioner.

**Contamination** means the presence of unallowed materials in a recycling container.

**County** means the County of Jackson or its designated agent to administer this ordinance.

**Curbside Collection** means a mixed municipal solid waste or recyclable materials collection system whereby the waste generator sets out waste containers for collection. Such collection may include specially established collection programs, including, but not limited to, “back door” collection programs.

**Day** means one calendar day.

**Discard** means to set out refuse for the intended purpose of having it removed by a hauler.

**Dispose** means to deposit refuse in a permitted solid waste management facility or to collect materials with the intent of depositing them in such a facility.

**Dwelling Unit** means a building, including hotels or motels, exclusive of recreational vehicles, containing as its principle use one (1) or more dwelling units of habitation.

**Garbage** means any refuse products or materials including, but not limited to, the following: putrescible animal and vegetable wastes resulting from the handling, preparation, cooking, sale or consumption of food; animal excretion; glass or metal containers, products or objects discarded as no longer usable; paper, wood, and cardboard waste; uprooted weeds, grass clippings, leaves and the like; ashes and cinders; discarded furniture or clothing; and dead animals. The term “garbage” does not include human excretion in the form of body waste.

**Generator** means the person who produced the refuse or recyclable material.

**Hauler** means any person who engages in the business of collecting, hauling or disposing garbage, solid waste, recyclables, landscape waste, trash, brush or other refuse on a continuous and regular basis within the County.

**Municipality** means any city, village or incorporated town.

**Person** means any individual, partnership, co-partnership, firm, company, corporation, association, joint stock company, trust, estate, political subdivision, state agency, or any other legal entity, or their legal representatives, agents or assigns.

**Recyclable Materials** means materials that are separated from garbage, solid waste, trash, or refuse for the purpose of recycling, such as, but not limited to, aluminum and tin cans, newspapers, corrugated cardboard, high grade printing and writing papers, magazines, landscape waste, plastic and glass containers, motor oil and vehicle fluids, cooking grease and other renderable materials; and for which an economic and practical recycling market exists for the particular material.

**Recycling, Reclamation or Reuse** means a method, technique or process designed to remove any contaminant from waste so as to render the waste reusable, or any process by which materials that would otherwise be disposed of or discarded are collected, separated or processed and returned to the economic mainstream in the form of raw materials or products; but does not include the combustion of waste for energy recovery or volume reduction.

**Refuse** means waste. Refuse shall be synonymous with the terms “garbage”, “refuse”, “rubbish”, “solid waste” and “trash”.

**Residential Dwelling Unit** means single, and multi-family dwelling units of habitation.

**Scavenging** means the unauthorized collection or removal of, in a manner not in conformity with the law governing scavenging, materials, solid waste, and recyclable materials from a solid waste management facility or refuse or recycling container, or that has been set out or discarded by persons specifically for authorized collection.

**Solid Waste** means any garbage, general residential dwelling unit and dwelling, commercial establishment unit waste, industrial lunchroom or office waste, landscape waste and construction and demolition debris.

**Solid Waste Stream** means any garbage, refuse or waste generated by residential dwelling units, dwelling units, and commercial establishment units.

#### **SECTION 4. Separation of Recyclables**

- A) Each person in Jackson County shall be encouraged to participate, to the fullest extent possible, in programs to collect recyclable materials.
- B) All haulers shall properly recycle any and all recyclable materials separated by the generator and set out for recycling collection, so long as the materials in question are ones collected for recycling by that hauler in accordance with Sections 7 and 9 of this Ordinance. Collected recyclables shall be sorted, processed and marketed as necessary to facilitate their recycling into new products, and shall not be disposed of in a landfill or other disposal facility. The only exception to this rule is when

materials are grossly contaminated to the point where they cannot be properly sorted and processed. If a hauler determines that a customer's recyclable materials are too contaminated for recycling, the hauler must promptly notify the customer as to why the materials were not recycled.

- C) Haulers may not separate recyclable materials from refuse unless this act is performed at a facility that has appropriate State permits.

### **SECTION 5. Disposal of Solid Waste**

All solid waste, excluding recyclable materials, collected by waste haulers must be disposed of at permitted solid waste management facilities.

### **SECTION 6. Licensing of Haulers**

- A) No person shall engage in the business of collecting or hauling garbage, solid waste recyclables, or other refuse from sites within the County, or to a disposal site within the County, without first procuring a license to do so from the County. Such license shall be valid for one (1) year beginning July 1 of each year through June 30 of the following year.
- B) A license may be waived for haulers that meet all of the following exemptions:
  - 1. Regularly collects refuse and/or recyclable materials from less than six (6) residential dwellings within the County;
  - 2. Does not collect refuse and/or recyclable materials from commercial establishment units within the County;
  - 3. Utilizes a disposal site within the County no more than twelve (12) times per license year.

In such case, the hauler shall ask the County in writing to be exempted from licensing, including details to support the request. Within thirty (30) days, the County shall respond in writing as to the hauler's exemption request. It shall be the responsibility of each hauler granted license exemption to submit a license application at such point in time when they no longer meet the exemption rules.

- C) The County shall prepare and make available to haulers an application form for vehicle licenses. The application shall include the following information:
  - 1. Name of business operating vehicles;
  - 2. Name of business manager;
  - 3. Name and address of the person designated as the legal representative of the business (such as president or owner);
  - 4. Address and telephone number of business;
  - 5. Year, make and model of each hauling vehicle;
  - 6. Type of each vehicle (such as dump truck, pickup, etc.);
  - 7. For each vehicle, its vehicle identification number, license plate number and fleet number;
  - 8. Weight of each vehicle;

- 9. Capacity of each vehicle in tons or cubic yards;
- 10. Such other information as the County shall deem appropriate and necessary.

- D) The licensee shall notify the County in writing within thirty (30) days following a change in any application information.
- E) Each application from a hauler engaged in the business of collecting or hauling garbage, solid waste recyclables, or other refuse from sites within the County, shall be accompanied by a material management plan in accordance with Section 7 of this ordinance.
- F) The County shall provide license renewal forms to each hauler within sixty (60) days prior to the expiration of the licensee's current license. License renewal forms shall be completed and received by the County thirty (30) days prior to the expiration of the licensee's current license.
- G) The County may grant a conditional license where an application and/or material management plan is incomplete. The conditional license shall specify the conditions upon which a permanent license will be granted and the time requirement within which the conditions must be met. Failure to comply with the conditions specified, shall result in a conditional license revocation and denial of a permanent license.
- H) The County shall have thirty (30) days from the receipt of the license or renewal application to issue or deny the license, license renewal, or conditional license. The County will issue a temporary license valid for thirty (30) days upon the County's failure to act upon the application within thirty (30) days.
- I) The past history of the applicant, in terms of compliance with this ordinance, will be considered for purposes of issuance or denial of the license. The County shall notify the applicant in writing of its decision. If issued, the license shall be mailed by first class mail to the address provided in the application. If denied, a written decision shall be served by certified mail upon the applicant at the address provided in the application.
- J) A license denial shall provide written notice stating the basis for the denial and shall provide notice to the applicant that if an appeal is desired, a written request for a hearing must be received by the County within fifteen (15) days following service of the denial. Upon receipt of a hearing request, the County shall set a time and place for the hearing. The hearing shall be conducted in accordance with the procedures in Section 11, Part 2 of this Ordinance.

K) The annual license fee for each vehicle shall be fifty dollars (\$50), except for rendering companies which shall pay a fifty dollar (\$50) annual licensing fee for their fleet. The annual license fee shall be prorated in the event the licensing period is less than one (1) year's duration. Payment of all fees must accompany the license application/renewal and material

management plan.

- L) A copy of the license shall be carried at all times in the vehicle; and the sticker shall be conspicuously displayed in the upper right hand corner of the windshield.
- M) The County reserves the right to inspect all licensed vehicles or fleets to ensure that they adequately prevent the spillage or loss of refuse, recyclable materials or liquids. Any hauler whose vehicle fails inspection may be subject to the penalties described under Section 11 of this Ordinance.

#### **SECTION 7. Material Management Plan**

As a condition of licensing and on a form supplied by the County, each applicant or licensee engaged in the business of collecting or hauling garbage, solid waste recyclables, or other refuse from sites within the County, shall submit a material management plan with the license application/renewal form. The plan shall demonstrate the means, methods, procedures to separate recyclables from the solid waste stream. Each material management plan shall contain the following:

1. The means, methods and procedures used to collect, process and market those separated materials from persons as required under Section 10 of this Ordinance.
2. The identification of specific recycling services to be employed (e.g. curbside services, etc.).
3. The total number of persons proposed to be served during the license year by each collection method used in Sub-Section 2 above, and the frequency of collection for each method. In addition, the total is to be broken down into the categories of residential dwelling units, dwelling units and commercial establishment units, showing the total number of each.
4. Identification of the types of recyclable material to be collected in accordance with, or beyond that required for separation under Section 10 of this Ordinance.
5. A description of the method and materials which will be used to explain to each customer the type of materials to be collected, material preparation instructions and frequency of service.

#### **SECTION 8. Reporting**

On or before July 31st and January 31st of each year, each licensee engaged in the business of collecting or hauling garbage, solid waste, recyclables, or other refuse from sites within the County, shall submit a written report, on forms provided by the County, on its recycling service operation during the previous six (6) months. (January 1 - June 30; July 1 - December 31). Interim reports may also be required by the County. Failure to submit a report shall constitute a violation of this ordinance and will result in suspension or revocation of the license. This report shall contain:

1. The total tonnage of solid waste collected in the County and the amount disposed of at in-county and out-of-county facilities.
2. The total tonnage of recyclable materials collected in the County, by commodity, in each sector - dwelling units and commercial establishment units.

3. The total tonnage of landscape waste collected for land application and/or composting.

## **SECTION 9. Collection of Recyclables**

- A) Collection of recyclables from all persons shall be by a hauler licensed by the County under this ordinance, and selected by the occupant of the unit, or by a manager of such unit, or by an association governing those units, or by a municipality or township, or by franchise awarded by a municipality or township.
- B) All haulers licensed by the County to engage in the collection of recyclables shall collect, at a minimum, the following materials from all residential dwellings which procure curbside recycling service: aluminum cans; steel cans; glass bottles and jars; plastic bottles (#1 and #2); newspaper; and corrugated cardboard. Haulers may collect additional types of recyclable materials, but shall report those additional types in the Material Management Plan as described in Section 7 of this Ordinance.

## **SECTION 10. Hauler Requirements**

All haulers licensed by the County to engage in the collection of refuse and/or recyclable materials from sites within the County, shall be required to:

- A) Provide curbside recycling service to each residential dwelling they service which contains four (4) or fewer units and is located within the corporate limits of a municipality.
- B) Provide refuse and curbside recycling service to the residential dwellings detailed in Sub-Section A of this Section for a single, combined price rate, with no option for the resident to opt-out of procuring the recycling service.
- C) Collect recyclable materials regularly from all residential dwellings that receive curbside recycling service, with every-other week being the longest period allowed between scheduled collections.
- D) Upon request, provide sufficient documentation to the County that the hauler is in compliance with the requirements of this Section.

## **SECTION 11. Administration and Enforcement**

### **A) Enforcement - VIOLATIONS AND PENALTIES**

1. Within any twelve (12) month period of time, any hauler who violates any provision of this ordinance may be subject to a fine of fifty dollars (\$50) for the first violation; one hundred dollars (\$100) for the second violation; two hundred fifty dollars (\$250) for the third violation; and five hundred dollars (\$500) for the fourth and subsequent violations. For a licensed hauler, in the case of a fourth violation within a twelve (12) month period of time, a fourteen (14) day suspension of a

license may be imposed. A fifth violation within a twelve (12) month period of time may result in a two (2) month license suspension. For further subsequent violation(s), the license may be revoked for the remainder of the license term plus an additional year. Notwithstanding these provisions, any violation of this ordinance may result in suspension or revocation proceedings in accordance with Sub-Section B of this Section.

2. Any person who scavenges solid waste and/or recyclable materials that have been set out specifically for collection by persons or the County or any person who adds any material that causes contamination to any County-owned recycling drop-off container designated for certain recyclable materials may be subject to a fine of up to five hundred (\$500) dollars for each occurrence. Each day of any violation of this ordinance which continues constitutes a separate offense for each day in violation.

3. A violation of this Ordinance shall be initiated by either a citation to the offender or by separate complaint. The violation shall be prosecuted by the State's Attorney's office.

4. In addition to the fines, the County may institute an injunctive action against the offender, separate from or in conjunction with the ordinance violation proceeding, seeking any appropriate relief to prevent, abate, correct any violation of this ordinance or a threatened violation of this ordinance.

5. The County may issue a warning notice to any person suspected of not being in compliance with any provision of this ordinance.

## **B) Administrative Procedures - NOTICE**

### **PART 1. SUSPENSION OF LICENSE**

a. Any license required under this ordinance may be temporarily suspended for a violation of any provision of this ordinance.

b. Whenever a license holder or operator has failed to comply with any provision of this ordinance, the license holder shall be notified in writing that the license shall be suspended as set forth in this ordinance. The notice shall state that the license holder shall have an opportunity for a hearing, and the procedures for requesting such shall be indicated in the notice to the license holder. The County, before imposing the suspension, shall allow for reasonable advance notice to the license holder of the suspension before it is imposed. If, however, the County finds that the public health, safety, or welfare requires immediate action, summary suspension of a license may be ordered. Requesting a hearing shall not delay or stay the imposition of the temporary or summary suspension.

c. Upon suspension of the license, the license shall be removed from the vehicle and immediately returned to the County.

- d. Any person whose license has been suspended may, at any time, make application for the reinstatement of the license. Upon receipt by the County of this request, the County may cause a reinspection or resubmission of corrected information or whatever corrective actions the County may require in order to reinstate the license. An application for reinstatement shall not delay or stay the imposition of the temporary or summary suspension.
- e. All notices for suspensions shall be by certified mail to or by personal service on the license holder.
- f. In addition to the above, the written notice shall state the effective date of the suspension; the facts constituting the conclusion that a violation or violations have occurred; a statement that if the licensee desires to appeal, a written request for a hearing must be received by the County; and the consequences to the license holder if the holder fails to contest the suspension.
- g. All hearings shall be conducted in accordance with PART 3 of this Sub-Section.

## **PART 2. REVOCATION OF LICENSE**

- a. For serious and repeated violations of any provision of this ordinance, or for interference with the County in the performance of its duties under this ordinance, the license may be permanently revoked after an opportunity for a hearing, as set forth in PART 3 of this Sub-Section, has been given the license holder. No license shall be revoked until the license holder has been notified in writing, as provided below. If the license holder fails to request a hearing, after being sent notice, by the date indicated in the notice, the license shall be permanently revoked. If the license holder requests a hearing within the time stated in the notice, then, the County, at its discretion, may suspend the license for the duration of the revocation proceedings. Provided further, nothing herein shall prevent the County from suspending a license, either summarily or temporarily concurrently with the license revocation proceedings.
- b. The date of revocation to be inserted in the notice of revocation shall be at least five (5) days from the date the notice is served on the license holder. In addition to the above, the notice shall also state whether or not the license is suspended during the pendency of the revocation proceedings. Further, the notice must also state the

reasons for the revocation; and that the license holder has the right to a hearing before the license revocation is imposed. Furthermore, the notice shall state the consequences to the license holder should the holder fail to request a hearing.

- c. All notices for suspensions shall be by certified mail to or by personal service on the license holder.
- d. All hearings shall be conducted in accordance with PART 3 of this Sub-Section.

**N) PART 3. HEARINGS**

- a. All hearings shall be conducted by the County at a time and place designated by it. Based upon the record of such hearing, the County shall make a finding and shall sustain, modify, or rescind any official notice or order considered in the hearing. A written report of the decision shall be furnished to the license holder by the County within ten (10) working days of the conclusion of the hearing, or such other time as the parties may agree to. All final decisions resulting from the hearing shall be subject to the Illinois Administrative Review Act, as now or hereinafter amended.
- b. All hearings shall be public and shall be recorded.
- c. The cost of preparing a record shall be borne by the applicant or license holder.

**SECTION 12. Effective Date**

The provisions of this ordinance shall be effective on July 1, 1997.

**SECTION 13. Other Ordinances or Agreements**

- A) This ordinance is not intended to abrogate any existing covenant or any other private agreement, provided that where the provisions of this ordinance are more restrictive or impose higher standards or requirements than such covenant or other private agreement, this ordinance's requirements shall govern.
- B) Where the requirements of any municipality's or township's ordinances or programs are more stringent than the provisions of this ordinance, the more restrictive program and/or ordinance requirements shall govern.

**SECTION 14. Severability**

If any section, subsection, sentence, clause, phrase, or any portion of this ordinance is for any reason held invalid or unconstitutional by any court of competent jurisdiction, such offending portion shall be deemed a separate, distinct and independent provision and such holding shall not affect the validity of the remaining portions thereof.

**SECTION 15. Provisions Cumulative**

The provisions of this ordinance are cumulative and are additional limitations upon all other laws and ordinances covering any subject matter within this ordinance.

**SECTION 16. Amendments**

This ordinance may be amended from time to time by amendatory ordinances.

**SECTION 17. Chairman's Signature**

The Chairman of the Jackson County Board is authorized to affix his signature on this ordinance on behalf of the Jackson County Board.

THIS REPRINT OF THE JACKSON COUNTY WASTE MANAGEMENT ORDINANCE IS COMPILED FROM ORDINANCE 96-28, ORDAINED AND ADOPTED BY THE JACKSON COUNTY BOARD AT ITS REGULAR MONTHLY MEETING ON SEPTEMBER 11, 1996; AND FROM AMENDMENTS TO THE ORDINANCE ON DECEMBER 11, 1996 (ORDINANCE 96-32), APRIL 9, 1997 (ORDINANCE 97-3), AUGUST 14, 2008 (ORDINANCE 08-04), OCTOBER 14, 2009 (ORDINANCE 09-08) and February 21, 2012 (ORDINANCE 12-1).