

NUTRIENT ASSESSMENT REDUCTION PLAN

BIG MUDDY/SALINE WATERSHEDS

October 26, 2023

AGENDA

- Welcome and Introductions
- Review and Updates
- Funding
- Planning Process and Timeline
- Future Planning
- Adjourn








NARP REVIEW

- *6.20.23 Meeting*
 - *Introduction of Greater Egypt*
 - *Geosyntec NARP Process*
 - *Formation of NARP Committee*
- *7.11.23 Meeting*
 - *Greater Egypt Planning Process*
 - *IEPA Q/A*
- *IEPA approval of Herrin NARP extension (12/31/24)*
- *DRA Grant Submissions (Late August)*

NUTRIENT ASSESSMENT REDUCTION PLAN PURPOSE

- NPDES Permit (Special Condition X)
- Treatment plants required to complete if plant is upstream of a waterbody with a phosphorus impairment
- *Phosphorus-related impairment means the downstream waterbody or segment is listed by the agency as impaired due to dissolved oxygen and /or offensive condition*

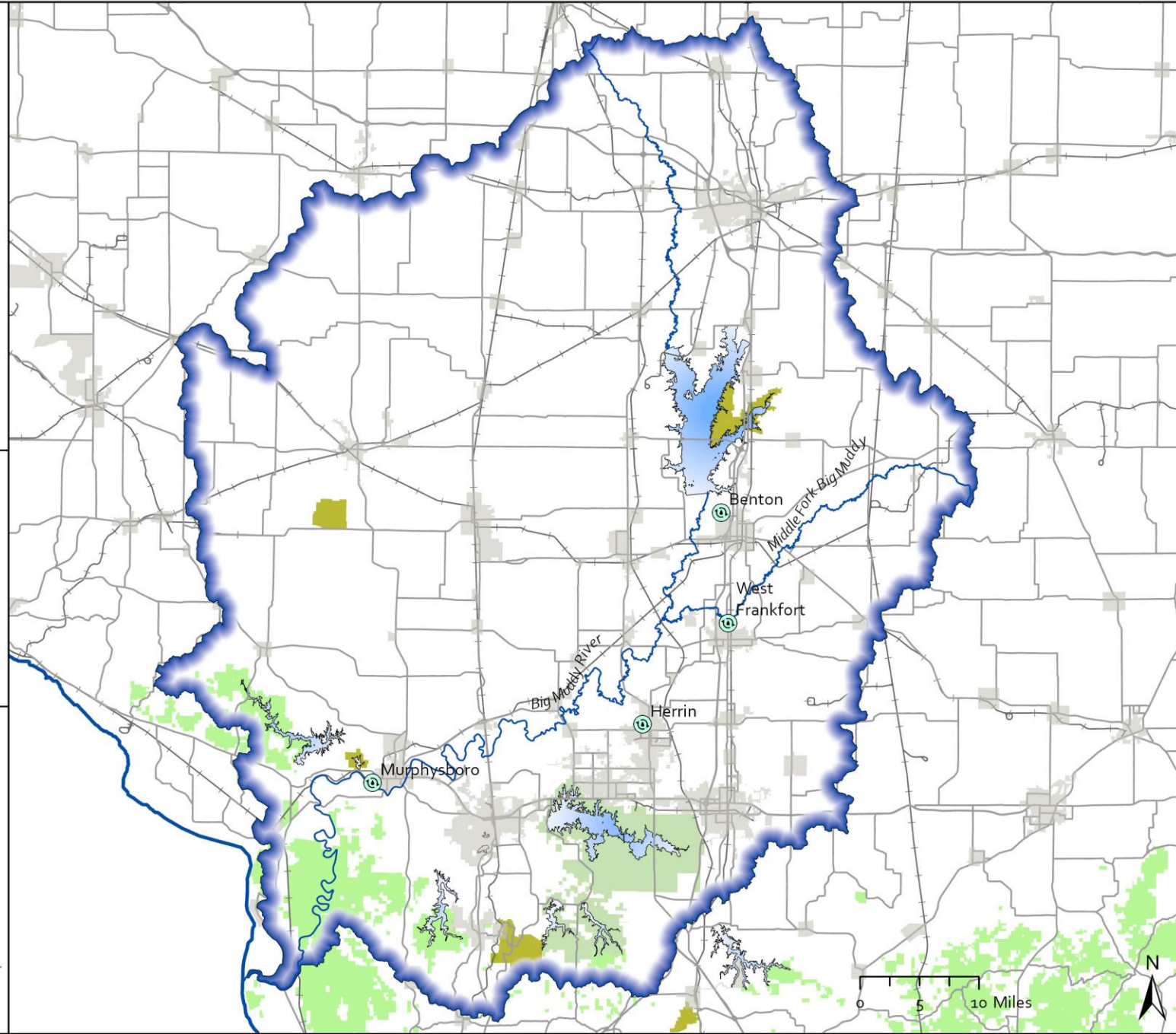
Big Muddy Nutrient Assessment Reduction Plan: Project Area

-  Participating POTW
- HUC 8 Watershed Boundaries
-  Big Muddy
- Municipalities & Census Designated Places
-  Rivers
-  Lakes
-  State Park
-  Crab Orchard National Wildlife Refuge
-  Shawnee National Forest

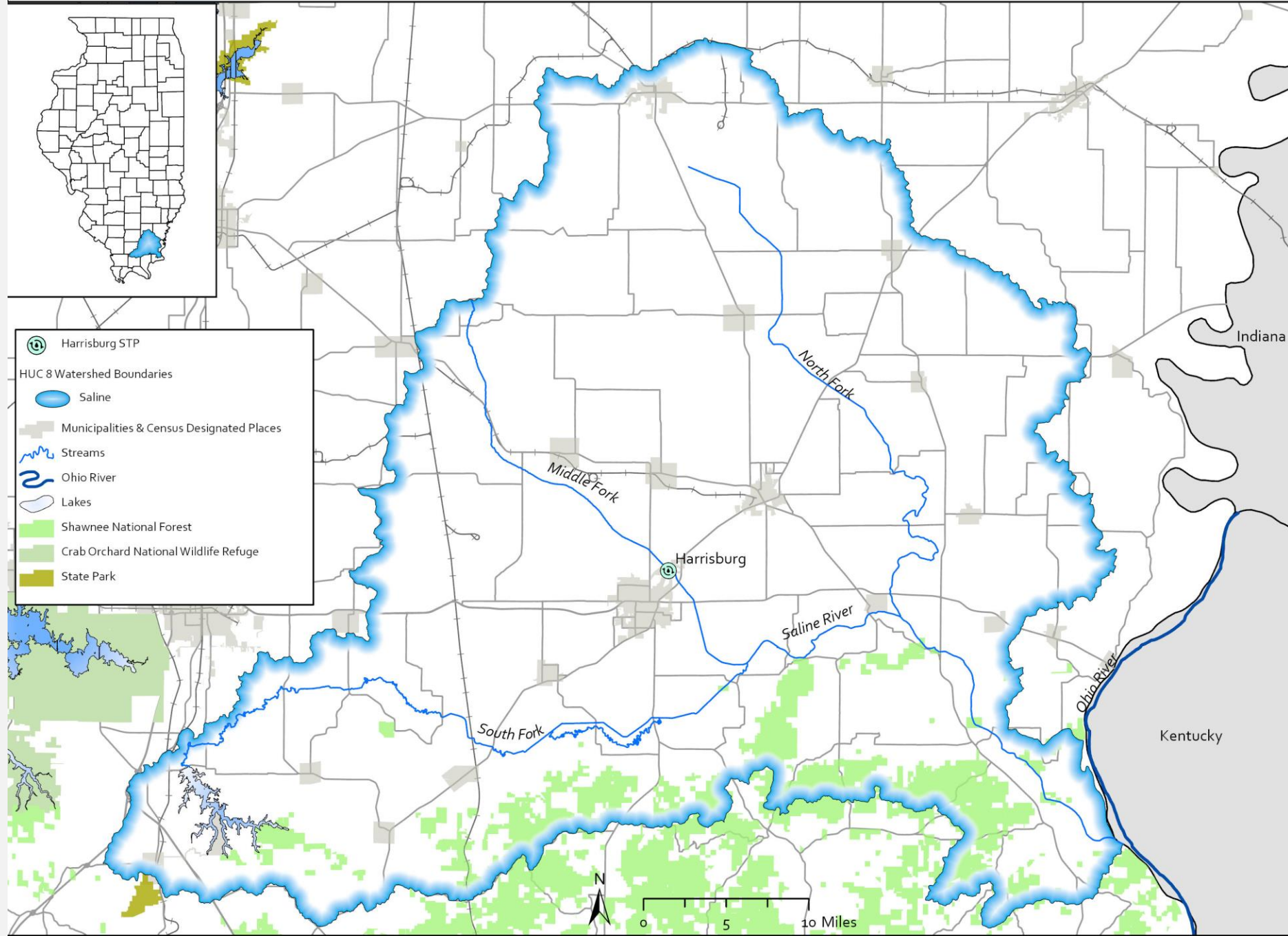


Greater Egypt Regional
Planning and Development
Commission, 2023.

Data Sources: U.S. Census Bureau, U.S.
DOT, U.S. EPA, U.S. Forest Service,
USFWS, ISGS, USGS National
Watershed Boundary Dataset



Saline Watershed Nutrient Assessment Reduction Plan: Project Area



PROCESS & TIMELINE

- Establish Watershed Group
- Develop NARP Objectives
- Determine Procedures
- Establish Schedule
- **Phase I - Data Review**
 - Previous locations of water samples
 - Data review of IEPA data
 - Notice to IEPA
- **Phase II - Monitoring**
 - Create Sampling Schedule
 - Submit to IEPA for Approval
- **Phase III – Modeling**
 - Choose model ((SWAT, HFVS, instream, etc.)

[illegible]

FUTURE PLANNING

- Feedback from DRA on grant
- Proceed with IGA
- Begin planning
- Sample Schedule to IEPA

DISCUSSION