

Jackson County Community Wildfire Protection Plan

PLANNING MEETING 1

MARCH 6, 2025, 2PM



Forest Service
U.S. DEPARTMENT OF AGRICULTURE

Agenda

Welcome & Introductions

Overview of planning process

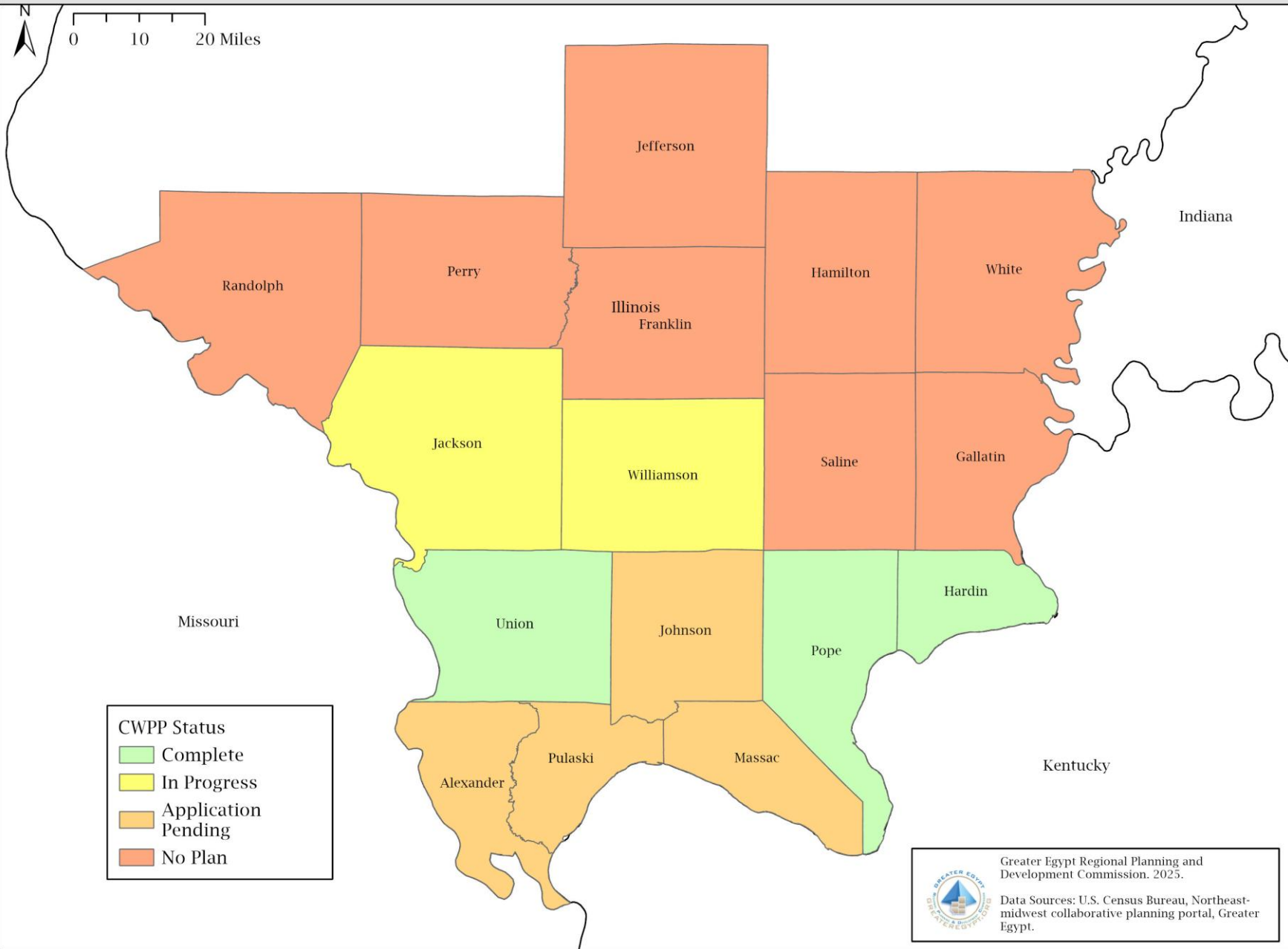
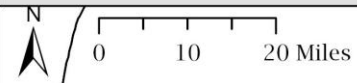
Required info from Fire Jurisdictions

Questions/comments

History & Purpose

- First CWPP in Illinois was the Makanda Township/Murphysboro-Pomona-Somerset Plan
 - Currently expired
 - Application to update the CWPP on a county scale was submitted in fall of 2023
 - Notice of award in 2024, grant contract recently finalized
 - Grant 90% funded with 10% Local match (\$58,950.00 : 5,895)
- Why create a CWPP?
 - Future grant eligibility
 - Collaboration with fire protection, forestry professionals, local leaders, and the public
 - Updated risk maps and other data

Southern Illinois CWPPs - Plan Status



CWPP Status

- Complete
- In Progress
- Application Pending
- No Plan



Greater Egypt Regional Planning and Development Commission. 2025.
Data Sources: U.S. Census Bureau, Northeast-midwest collaborative planning portal, Greater Egypt.

Planning Team & Roles

Greater Egypt Staff

- Tyler Carpenter – GIS & Environmental Planning Director
- Kelsey Bowe – Environmental Planning Coordinator
- Lilly Bolin Environmental Planner
- Organize meetings, Data collection & wildfire risk mapping, write plan, match documentation and project reporting

Meeting attendees:

- Please use zoom chat to introduce yourselves
- (this helps us record attendance for match)

Planning Team & Roles

Fire Protection Districts/ Fire Departments/ EMA

- Fire history data, mutual aid agreements, current response capabilities, list of future needs
- Assist with Community Risk Assessments

Forest Service

- Provide technical assistance as needed, review plan to ensure it aligns with the Northeast-Midwest Cohesive Strategy

USFWS/ Touch of Nature/ State Parks

- Fire history & other GIS data as needed, Site specific needs, future projects

IDNR

- Provide technical assistance if needed, review plan to ensure it aligns with Illinois State Forest Acton Plan

Planning Team & Roles

Other:

- Public meeting will be held later in planning process
- Other stakeholder ideas?

- Contact List Google spreadsheet:
 - optional to be included

National & Regional Cohesive Strategy Goals

1. Restore resilient landscapes
2. Create fire adapted communities
3. Increase safety and efficiency of wildfire response



Restore resilient landscapes

- Increase prescribed fire opportunities and training
- Provide suggested forest management techniques, including prescribed fire, to restore and maintain native oak-hickory forests, remove invasive species, and remove excessive fuels on the landscape in Williamson County.
 - Touch of Nature Land Management Plan
 - Crab Orchard National Wildlife Refuge Management Goals
 - IL State Forest Action Plan
- Review and update wildfire risk maps across the county, especially at the Wildland-Urban Interface (WUI)
- Review and identify specific areas in need of hazardous fuels reduction and other mitigation strategies to improve the health and safety of the landscape

Create fire adapted communities

- Increase community level preparation for wildfires
- Develop collaborative partnerships across jurisdictions:
 - Review and revise mutual aid agreements as necessary
 - Review wildfire response capabilities of each jurisdiction and identify needs for future trainings and equipment
 - Review and identify areas of priority for wildfire mitigation strategies to protect the life, property, and infrastructure within Jackson County.
- Conduct public meetings and surveys regarding wildfire response, WUI safety, and forest management practices
- Incorporate wildfire safety lessons into existing outreach programs
- Meet with local and county officials about the benefits of adopting a roofing ordinance for the County. This will also be a component of public meetings and surveys.
- Provide suggested strategies for landowners to reduce the risk of wildfire on private property
- Add wildfire educational lessons into existing outreach programs, coordinate with partner groups to create and share education materials.

Increase safety and efficiency of wildfire response

- Get local fire departments more involved in wildland fire management, including community planning, WUI awareness, wildland fire training, evacuation planning, prescribed fire and other hazard mitigation strategies & activities
- Collect wildfire data from all jurisdictions within the county to create a comprehensive database and interactive maps.
- Incorporate climate change effects into wildfire risk models, southern Illinois is experiencing increases in both flooding and droughts, with shifts in historic climatic regimes.

Risk Assessments & Mapping

- WUI boundaries & Hazardous fuels locations
- Fuel types
- Burn probabilities
- Wildfire risk
- Evac routes, shelter locations, and water sources – Current and proposed improvements

Information needed

- Current department info & equipment
- Wildfire history for each jurisdiction
- How each fire jurisdiction defines wildfire
- Mutual aid agreements within the county
- Hydrant locations – requested from Jackson County 911, no response
- List of future needs (training, personal, equipment, water sources, other)
- A representative from the FPDs to assist with risk assessments
 - This is an online web tool that collects data at a neighborhood/community scale and can provide risk ratings and suggested mitigation strategies

Greater Egypt will prepare data collection forms for each fire department to fill and return

Current Project Communities

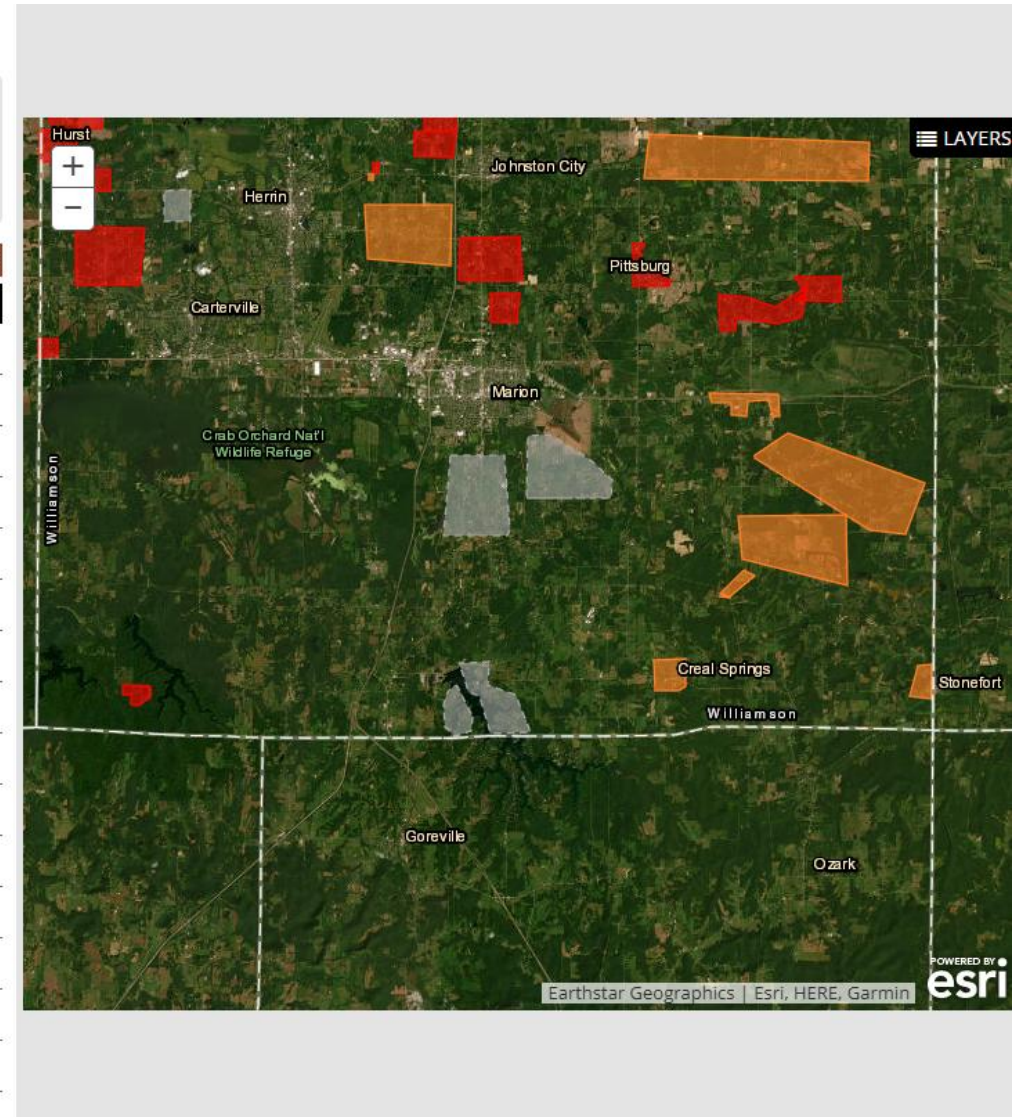
There are currently 31 Communities associated with this project. You may filter communities by name, assessment status, or boundary.

FILTER COMMUNITY MAP

Sort by "Community Name" in Descending Order

1 of 2

COMMUNITY NAME	ACRES	STATUS	BOUNDARY
Atilla (Poordo)	466.57	Assessed	Yes
Blairsville	274.31	Assessed	Yes
Brachel	29.48	Assessed	Yes
Bush	852.87	Assessed	Yes
Cambria	1,790.14	Assessed	Yes
Colp	375.17	Not Assessed	Yes
Corinth	4,341.54	Assessed	Yes
Crab Orchard	407.7	Assessed	Yes
Crab Orchard Estates	156.64	Assessed	Yes
Creal Springs	450.19	Assessed	Yes
Dykersburg	3,880.37	Assessed	Yes
Ferges	2,269.12	Assessed	Yes
Foxcroft	53	Assessed	Yes
Freeman Spur	410.74	Assessed	Yes
Hurst	523.84	Assessed	Yes
Lake of Foynt northeast	1 098.71	Not Assessed	Yes



Questions/comments?
