

# Perry County Solid Waste and Recycling Management Plan



## Perry County Solid Waste and Recycling Management Plan

Prepared by Greater Egypt Regional Planning and Development Commission

Lilly Bolin – Environmental Planner

Kelsey Bowe – Environmental Planning Coordinator

Nick Keller – Environmental Planner

Tyler Carpenter – Environmental Planning & GIS Director

This report constitutes the Solid Waste Management Plan Update as required by the Solid Waste Planning & Recycling Act (415 ILCS 15)

Details regarding this Planning Process, including meeting information and other details will also be available at the following website: <https://greateregypt.org/solid-waste-planning/>

Primary County Contact:

Becky Tracy, Administrator, Perry County Solid Waste & Zoning  
[btracy@perrycountyil.gov](mailto:btracy@perrycountyil.gov) 618-357-3267

*This project was fully funded through an Illinois Environmental Protection Agency (IEPA)  
County Solid Waste Planning Grant*

**Table of Contents**

- 1. Introduction & Planning Process..... 1
  - 1.1. County Background ..... 1
  - 1.2. Planning Process ..... 5
- 2. Illinois Legislation ..... 7
  - 2.1. Established State Laws ..... 7
  - 2.2. Recent Changes..... 10
- 3. Waste Generation and Composition ..... 12
  - 3.1. Waste Generation ..... 12
  - 3.2. Waste Composition..... 14
- 4. Materials Management ..... 16
  - 4.1. Landfills..... 17
  - 4.2. Recycling ..... 19
  - 4.3. Recycling Contamination ..... 20
  - 4.4. Tables of Regional Facilities ..... 21
  - 4.5. Specialty Events ..... 29
- 5. Municipal Surveys ..... 32
- 6. Public Survey ..... 36
- 7. Hauler Survey ..... 42
- 8. Management Strategies..... 48
- 9. Funding Opportunities ..... 53
- Appendix 1 – Notice of Planning..... 54
- Appendix 2 – Meeting Agenda and Minutes ..... 55
- Appendix 3 – Public Survey Flyers and Publication ..... 61

# 1. Introduction & Planning Process

## 1.1. County Background

Perry County, Illinois has a population of 20,945 based on the 2020 decennial census, a 6.4% decrease from 2010. The populations of incorporated areas are displayed in the table below. Land use of Perry County is largely agricultural (figure 2), although the largest industries are healthcare/ social assistance and public administration. Agriculture is the 10<sup>th</sup> highest industry (Table 2).

Table 1 - Municipal Populations

| Municipality  | Population |
|---------------|------------|
| Cutler        | 361        |
| Du Quoin      | 5827       |
| Pinckneyville | 5066       |
| St Johns      | 163        |
| Tamaroa       | 544        |
| Willisville   | 579        |

Source: 2020 decennial census

Table 2 - Industry in Perry County

| <b>Industry</b>  | <b>Employees</b> |
|--|------------------|
| Total - All Industries   | 5,484            |
| Health Care and Social Assistance  | 1,146            |
| Public Administration  | 699              |
| Educational Services   | 638              |
| Retail Trade   | 575              |
| Manufacturing  | 476              |
| Other Services (except Public Administration)                            | 408              |
| Accommodation and Food Services  | 347              |
| Transportation and Warehousing   | 260              |
| Construction   | 210              |
| Agriculture, Forestry, Fishing and Hunting                               | 204              |
| Finance and Insurance  | 182              |
| Wholesale Trade  | 103              |
| Professional, Scientific, and Technical Services                         | 88               |
| Administrative and Support and Waste Management and Remediation Services | 63               |
| Arts, Entertainment, and Recreation                                      | 37               |
| Real Estate and Rental and Leasing                                       | 22               |
| Information  | 19               |
| Utilities  | 8                |
| Mining, Quarrying, and Oil and Gas Extraction                            | 0                |
| Unclassified   | 0                |

Source: Jobs EQ, Q1 2023

Figure 1

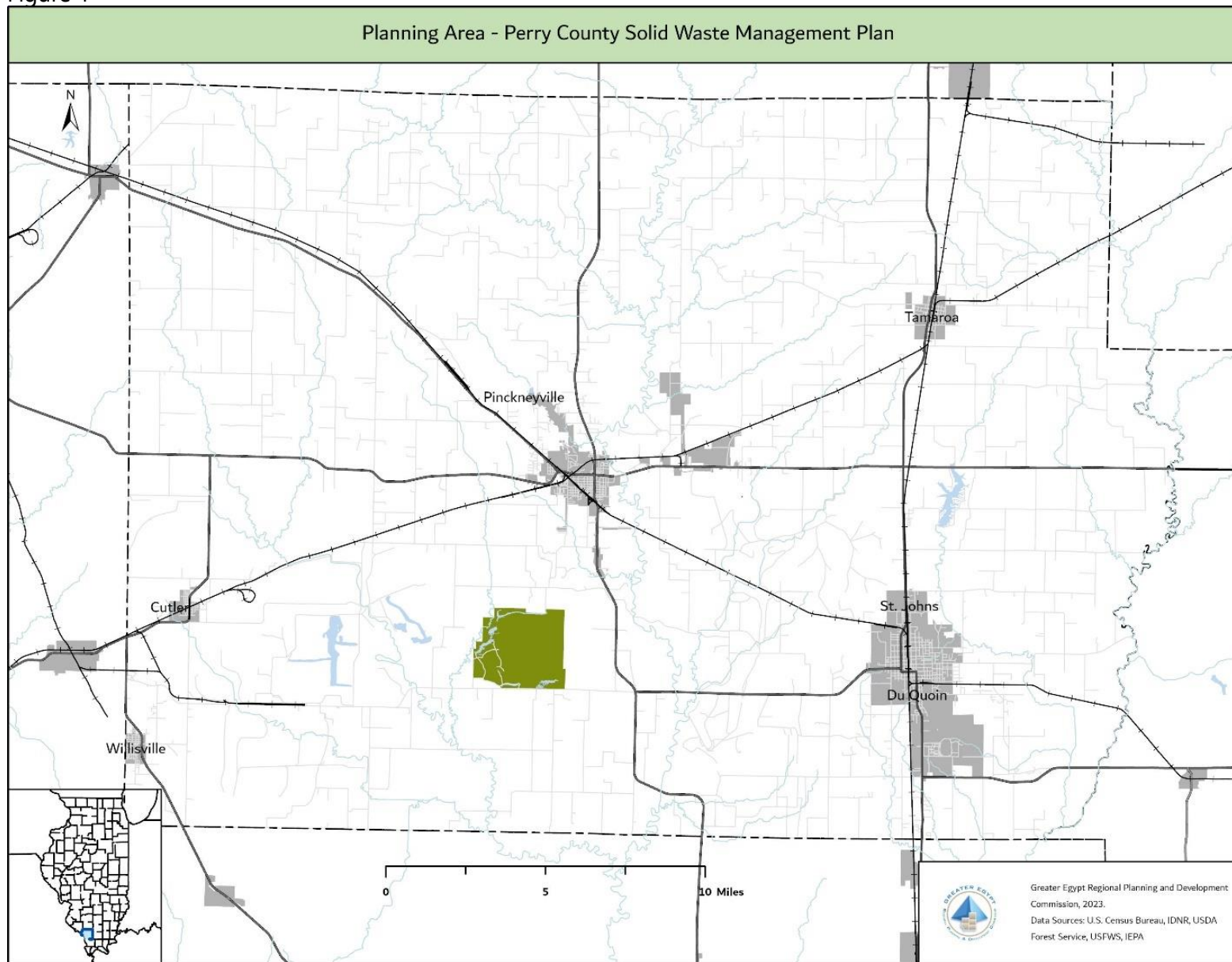
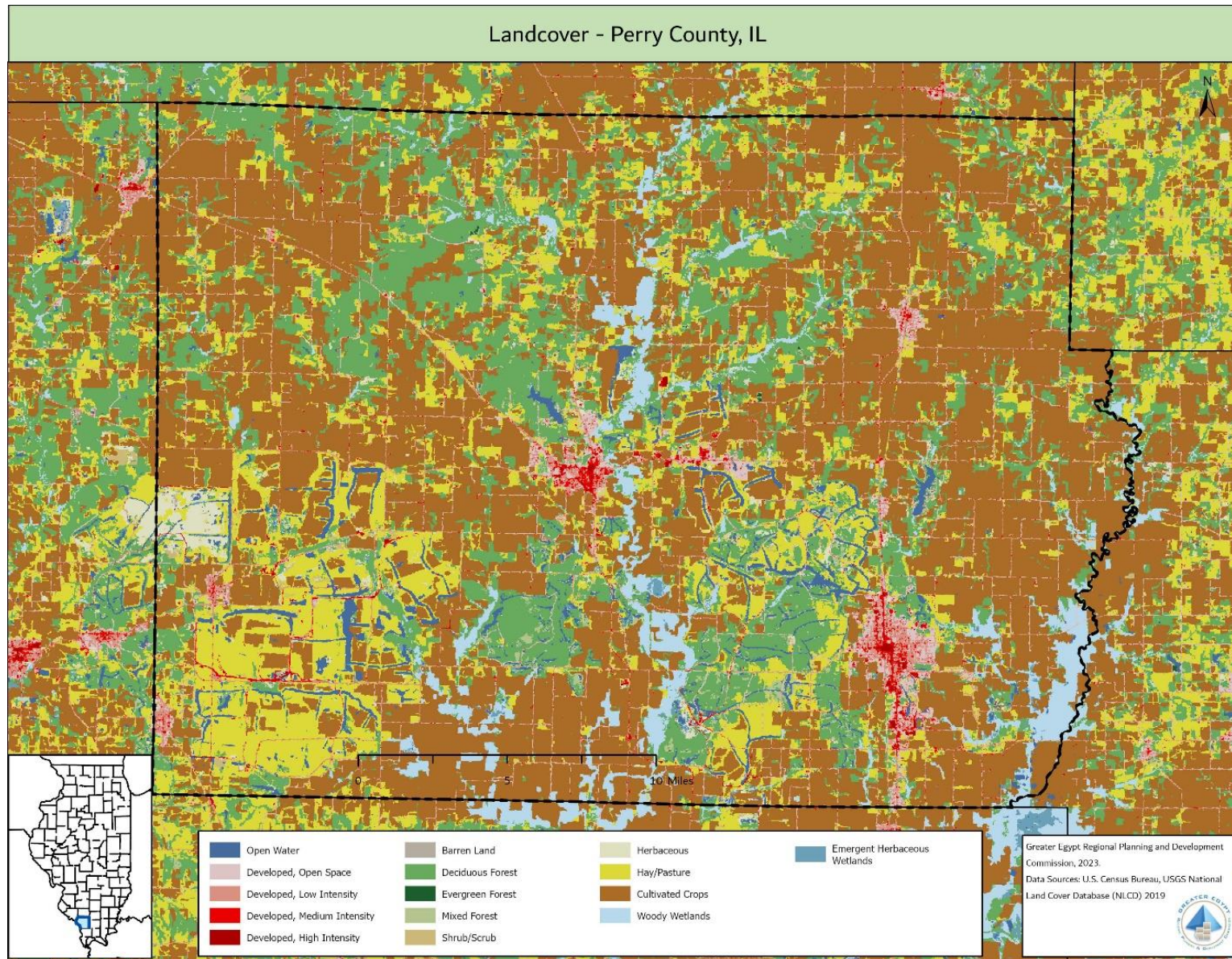


Figure 2



**1.2. Planning Process**

Greater Egypt reached out to Jackson County Health Department to select a coordinator to assist in the planning process. Additionally, emails and letters were sent to each municipality in the county to request participation. Waste and Recycling professionals that operate in southern Illinois were requested to participate as well. The following table displays the Perry County advisory committee. Advisory committee members provided data on their communities, attended meetings, offered suggestions for improvements in solid waste and recycling management, and provided draft comments on the Plan.

Once finalized and adopted by the County, The Perry County Solid Waste & Zoning Department will be the leading agency in implementing the Plan and overseeing future grant applications laid out in the management strategies section.

Table 3 - Advisory Committee

| <b>Jurisdiction</b>  | <b>Name</b>      | <b>Title</b>                          |
|--|------------------|---------------------------------------|
| Perry County Solid Waste & Zoning                          | Becky Tracy      | Administrator                         |
| Greater Egypt Regional Planning and Development Commission | Tyler Carpenter  | GIS & Environmental Planning Director |
|  | Kelsey Bowe      | Environmental Planning Coordinator    |
|  | Nick Keller      | Environmental Planner                 |
| Pinckneyville  | Robert L Spencer | Mayor                                 |
|  | Carrie Gilliam   | Economic Development Director         |
| St Johns   | Ruth Hawkins     | Village Board                         |
| Willisville  | Renee Languith   | Village Clerk                         |
| Tamaroa  | Cheryl Oettle    | Village Clerk                         |
| Cutler   | Daniel Curry     | Trustee                               |
| Du Quoin   | Ruth Hale        | Village Clerk                         |



Table 4 - Planning Timeline

| Project Milestone                  | Month of Project |   |   |   |   |   |   |   |   |    |    |    |    |    |    |    |    |    |    |    |    |
|------------------------------------|------------------|---|---|---|---|---|---|---|---|----|----|----|----|----|----|----|----|----|----|----|----|
|                                    | 1                | 2 | 3 | 4 | 5 | 6 | 7 | 8 | 9 | 10 | 11 | 12 | 13 | 14 | 15 | 16 | 17 | 18 | 19 | 20 | 21 |
| Publish Notice of Planning         | █                |   |   |   |   |   |   |   |   |    |    |    |    |    |    |    |    |    |    |    |    |
| Organize Resources                 |                  | █ | █ | █ | █ | █ |   |   |   |    |    |    |    |    |    |    |    |    |    |    |    |
| Meeting 1                          |                  | █ |   |   |   |   |   |   |   |    |    |    |    |    |    |    |    |    |    |    |    |
| Municipal Questionnaires           |                  |   |   |   |   | █ |   |   |   |    |    |    |    |    |    |    |    |    |    |    |    |
| Write Plan                         |                  |   |   |   |   |   | █ | █ | █ | █  | █  | █  | █  | █  | █  | █  | █  |    |    |    |    |
| Meeting 2                          |                  |   |   |   |   |   |   |   | █ |    |    |    |    |    |    |    |    |    |    |    |    |
| Public and Hauler Surveys          |                  |   |   |   |   |   |   |   |   |    |    |    | █  | █  |    |    |    |    |    |    |    |
| Meeting 3                          |                  |   |   |   |   |   |   |   |   |    |    |    |    |    |    | █  |    |    |    |    |    |
| Draft Review by Advisory Committee |                  |   |   |   |   |   |   |   |   |    |    |    |    |    |    |    |    | █  |    |    |    |
| Public Comment Period (90 days)    |                  |   |   |   |   |   |   |   |   |    |    |    |    |    |    |    |    | █  | █  | █  | █  |
| Submit Plan to IEPA                |                  |   |   |   |   |   |   |   |   |    |    |    |    |    |    |    |    |    |    | █  | █  |

## 2. Illinois Legislation

Illinois does not have one specific law/act that encompasses all solid waste management issues but has many separate pieces of legislation that address the issues pertaining to municipal solid waste. The three major laws that guide and impact management strategies are the Illinois Solid Waste Planning and Recycling Act, the Illinois Solid Waste Management Act, and the Illinois Environmental Protection Act. Other related laws and recent bills signed are also included in this section.

The sections below summarize the laws, to read the legislation in full, click on the links or visit <https://ilga.gov/>

### 2.1. Established State Laws

#### [Solid Waste Planning & Recycling Act \(415 ILCS 15\)](#)

This is law guiding the organization of this Plan. Under the Solid Waste Planning and Recycling Act, all counties in the state are required to develop comprehensive solid waste management plans which are to be reviewed by the IEPA. Each plan is required to be updated and reviewed every 5 years. Specific requirements of a comprehensive plan are summarized below:

- A description of municipal waste currently generated within the county's boundaries, and estimates of waste generation during the next 20 years, including an assessment of the primary variables affecting this estimate and the extent to which they can reasonably be expected to occur. (Section 3)
- A description of current waste processing facilities and their capacity and expected lifespan. (Section 4)
- A description of proposed management strategies, other projects, or facility upgrades for the next 20 years; including size, expected cost and financing method. (Section 8)
- An evaluation of advantages and disadvantages of the proposed waste management facilities and programs. (Section 8)
- Estimated timeline for the development and operation of each proposed idea. (Section 8)
- Description of proposed project locations. (Section 8)
- The identity of the governmental entity that will be responsible for implementing the plan on behalf of the county and explanation of the legal basis for the entity's authority to do so. (Section 1)

- Any other information that the Agency may require

### [The Illinois Solid Waste Management Act \(415 ILCS 20\)](#)

Passed in 1994, this act was made to provide framework for a comprehensive solid waste management program at the state level. Highlights of this Act include:

- All state agencies and local governments should consider compost product feasibility when soliciting bids for land maintenance activity, and priority should be given to compost products produced locally.
- Waste reduction programs are to be implemented in all State Agency buildings as appropriate.
- Requirements for paper products to contain post-consumer recycled materials.
- Requirements for state agencies to purchase and use other recycled products/materials whenever feasible.
- Aluminum can program requirements and use of funds generated from programs.
- Requirements for annual landfill capacity reporting
- Requirements for State-supported institutions of higher education to create waste reduction plans.

### [The Illinois Environmental Protection Act \(415 ILCS 5\)](#)

This act established requirements for the issuance of permits for pollution control facilities such as landfills. There are several provisions that pertain to specific issues of solid waste management. These provisions prohibit specific items from being disposed of in Illinois' landfills.

The prohibited items are as follows:

- **Landscape Waste:** Public Act 85-1430 banned landscape waste (grass, leaves and brush) from being landfilled effective July 1, 1990.
- **Lead-Acid Batteries (Car Batteries):** Public Act 86-723 banned the landfilling of lead-acid batteries effective September 1, 1990.
- **Waste Tires:** Public Act 86-452 (1989) banned whole used or waste tires from sanitary landfills effective July 1, 1994. (Public Act 93-839 eliminated DCEO's share of the Used Tire Management.)

- **White Goods:** Public Act 87-858 banned white goods (large appliances) from being landfilled effective July 1, 1994, unless the “white good components have been removed.” White goods include “all discarded refrigerators, ranges, water heaters, freezers, air conditioners, humidifiers and other similar domestic and commercial large appliance.” White good components include: “any chlorofluorocarbons refrigerant gas; any electrical switch containing mercury; and any device that contains or may contain PCBs in a closed system, such as a dielectric fluid for a capacitor, ballast or other component.” Additionally, 9 landfills cannot accept “clean” white goods for disposal unless they participate in the Industrial Materials Exchange Service by communicating the availability of white goods.
- **Used Oil:** Public Act 87-1213 prohibits, beginning July 1, 1996, persons from knowingly mixing liquid used oil with any municipal waste that is intended for collection and disposal at a landfill. The law further stipulates that no owner or operator of a sanitary landfill shall accept liquid used oil for final disposal beginning July 1, 1996. For the purpose of this act “liquid used oil” does not include used oil filters, rags, absorbent material used to collect spilled oil, or empty containers which previously contained virgin oil, re-refined oil or used oil.

#### [Consumer Electronics Recycling Act \(415 ILCS 151/\)](#)

Lays out requirements for manufacturers to provide e-waste recycling programs and annual reporting. Also describes requirements for manufacturer e-waste program plans. These plans must be submitted annually and provide information to local governments and the public about how to participate in their e-waste program. This act requires manufacturers that sell Covered Electronic Devices (CEDs) in the State of Illinois to register with the Illinois Environmental Protection Agency. Collectors and Recyclers of e-waste must also register with the Agency.

#### [The Solid Waste Hauling and Recycling Program Act \(415 ILCS 12\)](#)

Requires each waste hauler to provide information on how and what materials to recycle at least once every other year to customers with recycling service. Haulers shall provide a written offer to provide recycling services to commercial businesses, owners or operators of commercial property, and institutional facilities that are not recycling. materials collected by a hauler within a county or municipality shall not be deposited into a landfill or incinerator unless all reasonable efforts have been made by the hauler

to sell those recyclable materials to a processor or end user. While not impacting prior contacts, the law establishes that before a municipality decides to award an exclusive or franchise contract for commercial collection they must demonstrate, with information provided by the haulers, that less than 50 percent of the commercial businesses do not have recycling services for a defined period.

## **2.2. Recent Changes**

The following is a list of bills that Governor Pritzker has signed this year to take effect immediately or in 2025.

**HB 1837** – Burning of Landscape waste changes in the Environmental Protection Act including a provision to not prohibit the burning of landscape waste by a person engaged in the business of tree removal, at the person's registered place of business, provided that the burning activity (i) is located in a county with a population of 50,000 or less, (ii) is more than 1,000 feet from the nearest residence, (iii) is not located in an area with a PM2.5 design value greater than 9 micrograms per cubic meter, (iv) is not located in an area of environmental justice concern, as determined by the Agency's EJ Start tool, and (v) is conducted in accordance with all federal, State, and local laws and ordinances. This will go into effect January 1, 2025.

**SB 3686** – Creates the Portable Battery Stewardship Act. Requires those who sell or distribute covered batteries or battery-containing products in the State to implement and participate in a battery stewardship plan. Details the role of retailers in the State and stewardship plan components. States goals for the stewardship program. Provides for funding of the program. Provides requirements for the collection and management of batteries covered by this Act. Details the education and outreach requirements of the program. Outlines the Agency's role. Details the penalties for violations of the Act. Details requirements for the marking, disposal, and collection of batteries covered by this Act. Provides for the collection of batteries independent of a battery stewardship program. Defines terms. Effective immediately.

**SB 2876** – Provides that the amendatory Act may be referred to as the Large Event Recycling and Composting Law. Amends the Solid Waste Planning and Recycling Act. Provides that, on and after January 1, 2025, an owner or operator of an event facility that has a maximum legal capacity or occupancy of at least 3,000 persons and that receives funding from the State of Illinois shall participate in the recycling program established by the county in which the event facility is located and shall send recyclable materials to a recycling center. Defines "event facility".

**SB 0839** - Amends the Environmental Protection Act. Excludes paint and paint-related waste, as well as certain paint and paint-related waste that are hazardous waste, from the definition of "special waste". Provides that paint and paint-related waste that are hazardous waste are designated as universal waste subject to the streamlined hazardous waste rules. Provides that the Environmental Protection Agency shall propose, and the Pollution Control Board shall adopt rules to designate and provide for the management of paint and paint waste as universal waste. This shall go into effect 1/1/2025.

### **3. Waste Generation and Composition**

This section summarizes waste generation and composition including municipal solid waste, and landscape/organic waste from residential sources, commercial /institutional / multi-family sources, and construction and demolition sources. Regulated special waste, industrial process wastes, agricultural wastes, and sludges are excluded from the definition of municipal solid waste and therefore not included in the Perry County Solid Waste Management Plan.

#### **3.1. Waste Generation**

Waste generation refers to the refers to the weight of materials and products as they enter the waste management system from residential, commercial, and institutional sources and before recycling, composting, combustion or landfilling takes place.

To examine the waste generated in Perry County the management plan is using municipal solid waste (MSW) generation data that was collected in the Illinois Commodity/Waste Generation and Characterization Study Update which was released in 2015. In that study update they categorize the municipal by type of waste, paper, plastic, glass, metal, organics, and inorganics. A breakdown of the composition of each type of MSW is discussed in the following section and can be seen in Table 5.

The Perry County MSW generation rate is 6.07 pounds per capita per day (pcd). With most of the waste coming from paper and organics. At this generation rate the total MSW produced within the County is 24,630 tons per year. If the generation rate was to continue at the 2015 level adjusted to the 2020 population data of 20,945. Which is down from 22,247, and it would bring the total MSW down to 23,189 tons per year. With the estimated population in 2035 from the IDPH, 21,852, the total MSW would increase up to 24,193 tons per year. Per capita waste generation is not expected to change significantly for the next 20 years. Unless significant changes to commercial food and product packaging are made at a state or national scale, the average person will likely maintain the same purchasing habits throughout their life. Much of the paper, cardboard, plastic, and foam waste that we throw away is a result of how materials are packaged and supplied to retailers. Small rural communities such as those in southern Illinois have limited options for shopping and product choice.

There are some limitations to this MSW data. First being that there hasn't been a waste generation and characterization study conducted since 2015, so all the official data on a county wide level that is included in this report is almost a decade old. So, the estimated data may vary significantly from the actual data of the MSW generation in Perry County.

Table 5 - Waste Generation Summary and Future Projection

| <b>Material Generation</b>               | <b>(2015)<br/>tons</b> | <b>(2020) tons<br/>(estimate)</b> | <b>(2035) tons<br/>(estimate)</b> | <b>Percent of<br/>Total</b> |
|--|------------------------|-----------------------------------|-----------------------------------|-----------------------------|
| Paper                                    | 4580                   | 4312                              | 4499                              | 18.60%                      |
| Beverage Containers                      | 50                     | 47                                | 49                                | 0.20%                       |
| Plastic                                  | 3,140                  | 2,956                             | 3,084                             | 12.75%                      |
| Glass                                    | 950                    | 894                               | 933                               | 3.86%                       |
| Metal                                    | 1,370                  | 1,290                             | 1,346                             | 5.56%                       |
| Organics                                 | 6,110                  | 5,752                             | 6,002                             | 24.81%                      |
| Inorganics                               | 1,970                  | 1,855                             | 1,935                             | 8.00%                       |
| Textiles                                 | 1,040                  | 979                               | 1,022                             | 4.22%                       |
| Household Hazardous Waste                | 310                    | 292                               | 304                               | 1.26%                       |
| Construction and Demolition<br>Debris    | 5,110                  | 4,811                             | 5,019                             | 20.75%                      |
| <b><i>Total MSW WEIGHT (tons)</i></b>    | <b>24,630</b>          | <b>23,189</b>                     | <b>24,193</b>                     |                             |
| <b><i>Population</i></b>                 | <b>22,247</b>          | <b>20,945</b>                     | <b>21,852</b>                     |                             |
| <b><i>Total MSW (lbs/person/day)</i></b> | <b>6.07</b>            | <b>6.07</b>                       | <b>6.07</b>                       |                             |

Source: 2015 Illinois Commodity/Waste Generation and Characterization Study Update



### 3.2. Waste Composition

The breakdown of the composition of MSW generated in Perry County can be seen in Table 6 and Figure 3 below. The highest portion of the MSW is Organics at 24.8% of the total MSW, and the smallest portion being beverage containers at 0.2%. This data came from the 2015 Illinois Commodity/Waste Generation and characterization. As a part of that study, samples of residential and commercial waste were sorted at landfills and transfer stations to identify the material components in waste that is disposed.

Figure 3

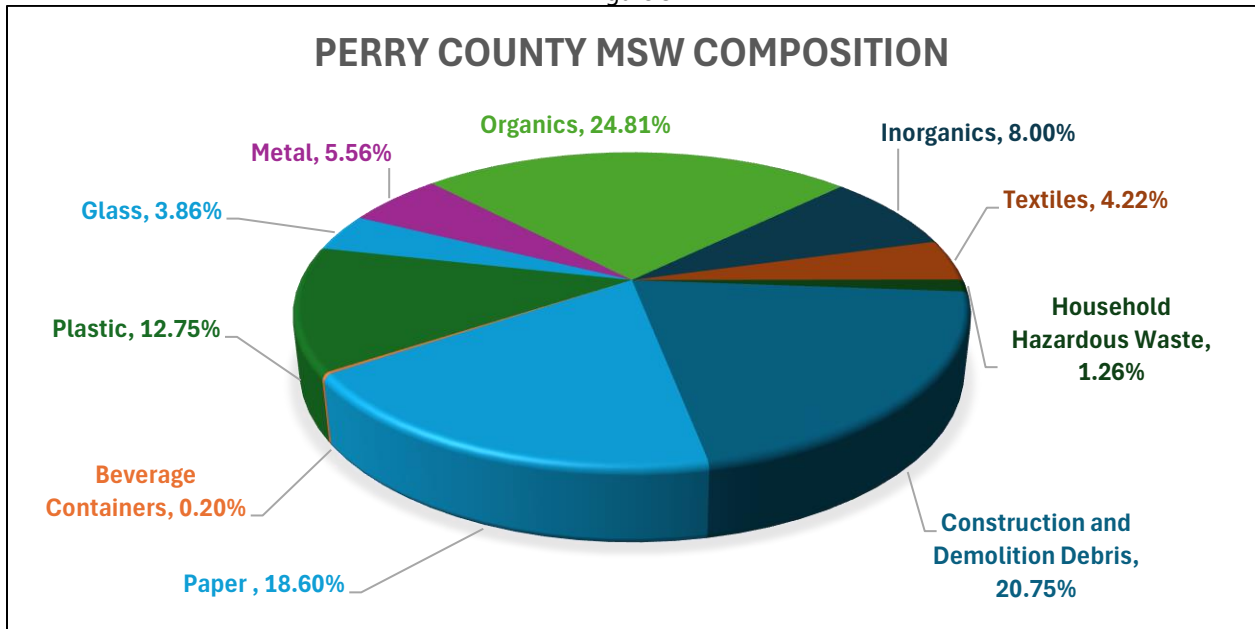


Table 6 - Waste Generation & Composition Data for Perry County

| Material                            | County Generation (lb/c/yr) | Total Generation (tons) | Material                                 | County Generation (lb/c/yr) | Total Generation (tons) |
|-------------------------------------|-----------------------------|-------------------------|--|-----------------------------|-------------------------|
| Paper                               | 411.7                       | 4580                    | Metal                                    | 123.2                       | 1370                    |
| Newsprint                           | 64.7                        | 720                     | Aluminum Beverage Containers             | 15.3                        | 170                     |
| High Grade Office Paper             | 24.3                        | 270                     | Other Aluminum                           | 9.0                         | 100                     |
| Magazines/Catalogs                  | 27.9                        | 310                     | Ferrous Containers (Tin Cans)            | 22.5                        | 250                     |
| Uncoated OCC/Kraft                  | 101.6                       | 1130                    | Other Ferrous                            | 51.2                        | 570                     |
| Boxboard                            | 54.8                        | 610                     | Other Non-Ferrous                        | 9.0                         | 100                     |
| Mixed Paper - Recyclable            | 53.0                        | 590                     | Other Metal                              | 16.2                        | 180                     |
| Compostable Paper                   | 72.8                        | 810                     | Organics                                 | 549.3                       | 6110                    |
| Other Paper                         | 12.6                        | 140                     | Yard Waste - Compostable                 | 117.8                       | 1310                    |
| Beverage Containers                 | 4.5                         | 50                      | Yard Waste - Woody                       | 23.4                        | 260                     |
| Milk & Juice Cartons/Boxes - Coated | 4.5                         | 50                      | Food Scraps                              | 284.1                       | 3160                    |
| Plastic                             | 282.3                       | 3140                    | Bottom Fines & Dirt                      | 44.9                        | 500                     |
| #1 PET Bottles/Jars                 | 16.2                        | 180                     | Diapers                                  | 36.9                        | 410                     |
| #1 Other PET Containers             | 4.5                         | 50                      | Other Organic                            | 42.3                        | 470                     |
| #2 HDPE Bottles/Jars - Clear        | 8.1                         | 90                      | Inorganics                               | 177.1                       | 1970                    |
| #2 HDPE Bottles/Jars - Color        | 7.2                         | 80                      | Televisions                              | 5.4                         | 60                      |
| #2 Other HDPE Containers            | 0.9                         | 10                      | Computer Monitors                        | 3.6                         | 40                      |
| #6 Exp. Polystyrene Packaging       | 18.9                        | 210                     | Computer Equipment/Peripherals           | 7.2                         | 80                      |
| #3-#7 Other - All                   | 12.6                        | 140                     | Electronic Equipment                     | 14.4                        | 160                     |
| Other Rigid Plastic Products        | 57.5                        | 640                     | White Goods - Refrigerated               | 10.8                        | 120                     |
| Grocery & Merchandise Bags          | 9.9                         | 110                     | White Goods - Not refrigerated           | 23.4                        | 260                     |
| Trash Bags                          | 33.3                        | 370                     | Lead-acid Batteries                      | 18.0                        | 200                     |
| Commercial & Industrial Film        | 28.8                        | 320                     | Other Household Batteries                | 4.5                         | 50                      |
| Other Film                          | 58.4                        | 650                     | Tires                                    | 26.1                        | 290                     |
| Other Plastic                       | 26.1                        | 290                     | Household Bulky Items                    | 62.9                        | 700                     |
| Glass                               | 85.4                        | 950                     | Fluorescent Lights/Ballasts              | 0.9                         | 10                      |
| Recyclable Glass Bottles & Jars     | 67.4                        | 750                     | Textiles                                 | 93.5                        | 1040                    |
| Flat Glass                          | 9.9                         | 110                     | Carpet                                   | 24.3                        | 270                     |
| Other Glass                         | 8.1                         | 90                      | Carpet Padding                           | 6.3                         | 70                      |
|                                     |                             |                         | Clothing                                 | 39.6                        | 440                     |
|                                     |                             |                         | Other Textiles                           | 23.4                        | 260                     |
|                                     |                             |                         | Household Hazardous Waste                | 27.9                        | 310                     |
|                                     |                             |                         | Construction and Demolition Debris (C&D) | 459.4                       | 5110                    |
|                                     |                             |                         | <b>Total MSW (tons)</b>                  |                             | <b>24630</b>            |
|                                     |                             |                         | <b>Total MSW (pounds/person/day)</b>     |                             | <b>6.07</b>             |

Source: 2015 Illinois Commodity/Waste Generation and Characterization Study Update

## 4. Materials Management

### Introduction

The solid waste in southern Illinois generally goes to one of 3 facilities:

- Transfer Stations – Temporary storage and processing facilities for solid waste. Waste is dropped off by the public and/or commercial haulers in small loads. It is then consolidated and transferred to landfills or recycling centers.
- Landfills – specifically designated sites for the disposal of waste materials. This is the final location for most waste in our region. Landfills may vary in design, storage, compaction practices, however they must meet the requirements set forth by the federal and state Environmental Protection Agencies.
- Recycling Center – Recyclables from haulers and the public are sometimes brought to recycling centers. The materials accepted and processing techniques vary widely from facility to facility; this Plan will describe the ones in our region.

Currently, Perry County has one recycling drop off center at the county administration building in Pinckneyville. There are several hauling companies that offer curbside recycling options – see hauler survey section for details.

### Interactive Map

[Click here to view an interactive map showing regional waste and recycling facilities!](#)

This is a living document and will be kept as up to date as possible

#### 4.1. Landfills

Any collected municipal solid waste that is not recycled will eventually end up in one of three regional landfills.

##### Perry Ridge Landfill

Located in Perry County, this landfill had a 5-year average of 192,750 cubic yards disposed per year. The remaining capacity as of 01/01/2023 was over 10 million cubic yards, with a lifetime expectancy of 53 years. It is classified as a Subtitle D non-hazardous wastes landfill.

Table 7

| <b>Accepted</b>  | <b>Not Accepted</b>  |
|--|--|
| Asbestos   | Hazardous Wastes   |
| CERCLA Wastes  | E-Wastes (including all types of electronic equipment, commercial and residential) |
| Coal Ash (conditioned and dry)                                   | Florescent Lightbulbs  |
| Construction & demolition debris                                 | Landscape Waste  |
| Containerized waste  | Medical Waste  |
| Contaminated soil and debris                                     | Motor Vehicle Batteries  |
| FGD Wastes (conditioned and dry)                                 | PCB Wastes (except as provided under TSCA)   |
| Municipal Solid Waste  | Used Motor Oil   |
| Off Spec and out of date chemical and consumer products          | Used Tires   |
| RCRA Empty Containers  | White Goods (i.e., large household appliances)                                     |
| Liquids from industrial processes for solidification             |  |
| Sludges from industrial processes and municipal sewage treatment |  |
| Wastewater and Water Treatment Sludge                            |  |

## Southern Illinois Regional Landfill

Owned and operated by Republic Services, this landfill is in Jackson County. Their 5-year disposal average was 442,357 cubic yards with a remaining capacity of over 15 million cubic yards. The remaining life expectancy of this landfill is 35 years.

Table 8

| <b>Not Accepted:</b>  |   |
|---|---|
| Batteries   | Household Hazardous Waste (household cleaners, pesticides, solvents, fertilizers, antifreeze) |
| Ashes   | Liquids   |
| Electronics   | Medical Waste/Sharps  |
| Yard Waste (limbs, twigs, stumps, soil, grass clippings, gumballs)              | Medication  |
| Motors or Parts of Motors   | Chemical Waste  |
| Lawnmowers  | Radioactive Waste   |
| Empty tanks – Gas, Oil, Fuel,   | Reactive Waste  |
| Tires   | Corrosive Waste   |
| Paint   | Septic/Sewer Waste  |
| White Goods/Appliances - Refrigerators, Stoves, Freezers, Washers, Dryers, etc. | Compressed Cylinders  |
| Used Oils - Motor, Hydraulic, Mineral, Cutting, etc.                            | Cars, Trucks, Motor Homes, Buses (No Vehicles) or parts                                       |
| Furnaces/Water Heaters  | Automotive Camper Shells  |
| Air Conditioners/Mercury Thermostats or switches                                | Fluorescent Lights/Tubes  |
| Flammable Waste – Propane Tanks   |   |

## West End Disposal Facility

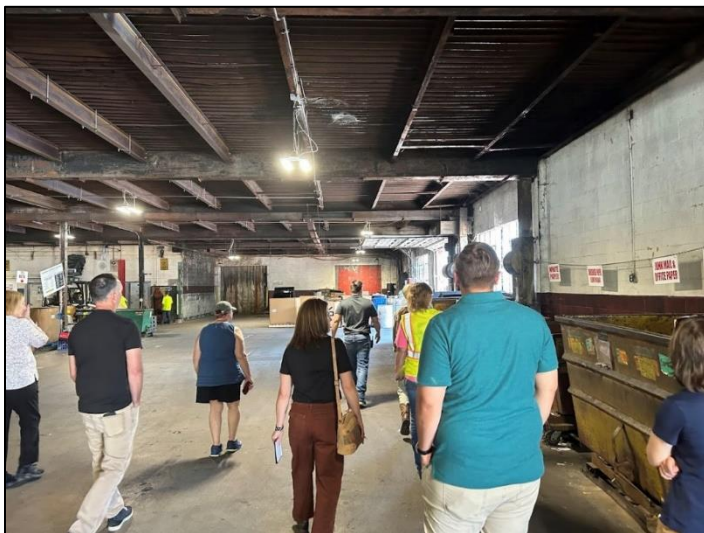
West End Disposal Facility in Saline County has the longest life expectancy in the region at 68 years. Their 5-year disposal average was 143, 436 cubic yards with slightly under 10 million cubic yards of space available. This landfill is owned and operated by Waste Connections. While this company also provides hauling services, they do not currently contract with any of the Perry County municipalities.

Table 9

| <b>Accepted</b>         | <b>Not Accepted</b>                            |
|-------------------------|--|
| Municipal Solid Waste   | Hazardous wastes                               |
| Asbestos                | White Goods (i.e., large household appliances) |
| Approved special wastes | Tires  |
|                         | Electronics                                    |
|                         | Bulk Liquids                                   |

## **4.2. Recycling**

Perry County has one recycling drop-off station in Pinckneyville, and two haulers that offer curbside recycling- Second Cycle and Republic Services. Jackson County is home to CRC Southern Recycling, a regional sorting and processing center for many different recyclable materials. They accept materials from the public and commercial haulers. This recycling center came under CRC ownership recently, and several upgrades are planned to increase the capacity and diversity of materials accepted; and improve the recycling process for everyone in the community. Details will be covered throughout this Plan.



Left: Greater Egypt staff and other community leaders tour the CRC Facility with general manager Loren Grey. Photo by Kelsey Bowe.

### 4.3. Recycling Contamination

The largest issue haulers and recycling centers face is contamination of loads.

**Recyclables placed into drop off bins or curbside bins must be loose.** Items in bags significantly increase staff sorting time, bags can also clog machinery in hauling trucks and on the sorting line. Other contamination problems come from non-recyclable items being mixed in with recycling loads. Always check your local regulations from your municipality or hauling company to make sure the material will be accepted. If your curbside hauler refused to take your recycling bin or trash, you may have placed unaccepted items within, it is the responsibility of the household to ensure materials in waste and recycling bins will be accepted before they are placed at the curb.

Figure 4



Left: the intake center at CRC Southern Recycling. All of the plastic bags have to be manually opened by staff members before items can be sorted for recycling. This adds significant time and delays the amount of material that can be processed in a day. Photo by Kelsey Bowe

Below: Items in bags at the Perry County Drop-off station. Items should be dumped in loose and the bag recycled or disposed of separately. Photo from Perry County Solid Waste & Recycling Facebook Page.

Figure 5



#### 4.4. Tables of Regional Facilities

Table 10 - Landfills

| <u>Landfills</u>                    | <u>County</u> | <u>Materials Accepted</u>         | <u>Open to</u>                    | <u>Website</u>  | <u>Phone</u>                         | <u>Address</u>                                   |
|-------------------------------------|---------------|-----------------------------------|-----------------------------------|---|--------------------------------------|--|
| Perry Ridge Landfill                | Perry         | Municipal solid waste             | Public, commercial haulers        | <a href="https://www.perryridgelandfill.com/">https://www.perryridgelandfill.com/</a>                                 | (630) 653-3700<br>(corporate number) | 6305 Sacred Heart Rd.<br>Du Quoin IL             |
| Marion Ridge Landfill               | Williamson    | NA, facility not yet in operation | NA, facility not yet in operation |   |                                      | 11178 North Skyline Drive, Marion IL 62959       |
| Southern Illinois Regional Landfill | Jackson       | Municipal solid waste             | Public, commercial haulers        | <a href="https://www.republicservices.com/">https://www.republicservices.com/</a>                                     | (618) 867-2909                       | 1540 Landfill Rd, De Soto, IL 62924              |
| West End Disposal Facility          | Saline        | Municipal solid waste             | Public, commercial haulers        | <a href="https://www.wasteconnections.com/west-end-landfill/">https://www.wasteconnections.com/west-end-landfill/</a> | (618) 268-9412                       | 1710 McFarland Rd #2061, Thompsonville, IL 62890 |



Table 11 - Transfer Stations

| <u>Transfer Stations</u>                  | <u>County</u> | <u>Materials Accepted</u>                             | <u>Open to</u>             | <u>Website</u>  | <u>Phone</u>   | <u>Address</u>                         |
|---|---------------|---|----------------------------|---|----------------|--|
| Energy Transfer Station                   | Williamson    | Municipal solid waste                                 | Public, commercial haulers | <a href="https://energytransferstation.com/">https://energytransferstation.com/</a> | (618) 727-7040 | 703 E College St, Marion, IL 62959     |
| Herrin Transfer Station                   | Williamson    | Municipal solid waste                                 | Public, commercial haulers | <a href="https://www.republicservices.com/">https://www.republicservices.com/</a>   | (618) 942-2193 | 13129 Bandyville Rd, Herrin, IL 62948  |
| Mt. Vernon Transfer Station               | Jefferson     | Municipal solid waste                                 | Public, commercial haulers | <a href="https://www.republicservices.com/">https://www.republicservices.com/</a>   | (618) 242-3701 | 1106 Rackaway St. Mt Vernon IL 62864   |
| Metropolis Massac County Transfer Station | Massac        | Municipal solid waste, construction/de molition waste | Public, commercial haulers |   | (618) 543-7308 | 901 Joppa Rd, Metropolis, IL 62960     |
| Sparta Transfer Station                   | Randolph      | Municipal solid waste                                 | Public, commercial haulers | <a href="https://www.republicservices.com/">https://www.republicservices.com/</a>   | (800 )631-1156 | 8384 Valley Steel Rd. Sparta, IL 62286 |

Table 12 - Recycling Facilities

| <u>Recycling Facilities</u>  | <u>County</u> | <u>Materials Accepted</u>   | <u>Open to</u>             | <u>Website</u>  | <u>Phone</u>    | <u>Address</u>                          |
|------------------------------|---------------|---|----------------------------|---|-----------------|---|
| CRC Southern Recycling       | Jackson       | Many – see below  | Public, commercial haulers | <a href="https://crcrecycling.com/">https://crcrecycling.com/</a>   | (618) 549-2880  | 300 W Chestnut St, Carbondale, IL 62901 |
| Progress Port                | Williamson    | Plastic #1 & #2, paper, glass (brown, clear, green), aluminum cans, steel(tin) cans, cardboard, bagged shredded paper, shredding services, plastic & wood pallets | Public                     | <a href="http://www.progressportinc.com/services/recycling-center/">http://www.progressportinc.com/services/recycling-center/</a> | (618) 985-8351  | 1120 N Division Carterville, IL 62918   |
| Do Your Part Recycling       | Franklin      | Plastics 1-7 and bags, cardboard, mixed paper, steel, aluminum (no longer accepting glass)  | Public                     | <a href="https://www.facebook.com/DoYourPartRecycling/">https://www.facebook.com/DoYourPartRecycling/</a>                         | (618) 218-6646  | 309 E Main St Benton IL 62812           |
| Cimco Recycling - Marion     | Williamson    | Metals  | Public, commercial haulers | <a href="https://www.cimcoresources.com/">https://www.cimcoresources.com/</a>   | (618) 997-5400  | 9450 IL-148, Carterville, IL 62918      |
| Cimco Recycling - Carbondale | Jackson       | Metals  | Public, commercial haulers | <a href="https://www.cimcoresources.com/">https://www.cimcoresources.com/</a>   | (618) 457-6319  | 2622 New Era Rd, Murphysboro, IL 62966  |
| T & T Recycling - Hurst      | Williamson    | Metals  | Public, commercial haulers | <a href="http://www.tandtr recycling.com/">http://www.tandtr recycling.com/</a>   | (618) 987-2088  | 16917 State Highway 149                 |
| T&T Recycling - Benton       | Franklin      | Metals  | Public, commercial haulers | <a href="http://www.tandtr recycling.com/">http://www.tandtr recycling.com/</a>   | (618) 435-5305  | 7533 IL-37, Benton, IL 62812            |
| Ashalex Recycling            | Williamson    | Construction/demolition waste   | Commercial haulers         |   | (618) 942-3880, | Skyline Rd. Marion, IL 62959            |
| Milano Metals & Recycling    | Jefferson     | Metals  | Public                     | <a href="https://milanometals.com/">https://milanometals.com/</a>   | (618) 244-3168  | 510 S 6th St, Mt Vernon, IL 62864       |
| Tilly's Salvage Yard         | Jackson       | Metals  | Public                     |   | (618) 790-3592  | 24634 US-51, Elkhville, IL 62932        |

Many commercial retailers also take certain recyclable materials. Home improvement and electronics stores often accept lithium-ion batteries and other devices. Nearly all commercial grocery stores accept plastic bags to be recycled. Call locations in your area to see what materials are accepted.



---

## INNOVATIVE SOLUTIONS FOR A GREENER FUTURE

---

### **Materials Accepted at Carbondale Recycling Facility Drop-off:**

- Aluminum Cans & Tin Cans
- Books (Hard-back & Soft-back)
- Box Board (i.e. food boxes, soda/beer boxes, etc.)
- Cardboard
- Clothes Hangers (Metal)
- Clothing (No Blankets, Pillows, Sheets, Towels, etc.)
- Dishwasher with metal inside
- Dryers/Stoves/Washers/Water Heaters
- Electronics (No more than 10 items per month)
- Glass Bottles/Jars (Clear and Colored)
- Holiday Lights
- METAL Fans, Irons, Tools, Miscellaneous metals
- Toaster Ovens
- Plastics (All but #6)
- Newspaper, Office Paper, Shredded Paper, Junk Mail/Colored Paper
- Magazines/Catalogs, Telephone Books
- Treadmills
- Windowpane Glass (not tempered glass)

Table 13 - Recycling drop-off locations

| <u>Recycling Drop Off Locations</u> | <u>County</u> | <u>Materials Accepted</u>  | <u>Open to</u>                      | <u>Website</u>  | <u>Phone</u>        | <u>Address</u>   |
|-------------------------------------|---------------|--|-------------------------------------|---|---------------------|--|
| <b>Perry County Recycling</b>       | <b>Perry</b>  | <b>Plastic #1 &amp; #2, paper, glass (brown, clear, green), aluminum cans, steel(tin) cans</b> | <b>Public</b>                       | <a href="https://www.facebook.com/PerryCountySolidWasteRecycling/">https://www.facebook.com/PerryCountySolidWasteRecycling/</a> | <b>618-357-3267</b> | <b>3764 State Route 127/13 Pinckneyville, IL 62274</b>     |
| Williamson County Courthouse        | Williamson    | Plastic #1 & #2, paper, cardboard, glass (brown, clear, green), aluminum cans, steel(tin) cans | Public- Mon, Wed, Fri 9AM-12Pm only | <a href="https://www.williamsoncountyil.gov/recycling/">https://www.williamsoncountyil.gov/recycling/</a>                       |                     | N Monroe St (across from county Admin bldg.)               |
| Chistopher Drop-off                 | Franklin      |  | Public                              |   |                     | S Mulkey St  |
| Sesser Drop-off                     | Franklin      |  | Public                              |   |                     | 303 Franklin St, Sesser IL                                 |
| Jackson County 1 - Health Dept      | Jackson       | Plastic #1 & #2, paper, cardboard, glass (brown, clear, green), aluminum cans, steel(tin) cans | Public                              | <a href="https://jchdonline.org/recycle-jackson-county/">https://jchdonline.org/recycle-jackson-county/</a>                     | (618) 684-3143      | 415 Health Dept. Rd Murphysboro, IL 62966                  |
| Jackson County 2 - U of I Extension | Jackson       | Plastic #1 & #2, paper, cardboard, glass (brown, clear, green), aluminum cans, steel(tin) cans | Public                              | <a href="https://jchdonline.org/recycle-jackson-county/">https://jchdonline.org/recycle-jackson-county/</a>                     | (618) 684-3143      | 402 Ava Rd. Murphysboro, IL 62966                          |
| Jackson County 3 - Campbell Hill    | Jackson       | Plastic #1 & #2, paper, cardboard, glass (brown, clear, green), aluminum cans, steel(tin) cans | Public                              | <a href="https://jchdonline.org/recycle-jackson-county/">https://jchdonline.org/recycle-jackson-county/</a>                     | (618) 684-3143      | Rock Crusher Road Campbell Hill, IL 62916                  |
| Jackson County 4 - Ava              | Jackson       | Plastic #1 & #2, paper, cardboard, glass (brown, clear, green), aluminum cans, steel(tin) cans | Public                              | <a href="https://jchdonline.org/recycle-jackson-county/">https://jchdonline.org/recycle-jackson-county/</a>                     | (618) 684-3143      | Intersection of Main Street & Keller Highway Ava, IL 62907 |

| <u>Recycling Drop Off Locations</u> | <u>County</u> | <u>Materials Accepted</u>  | <u>Open to</u> | <u>Website</u>  | <u>Phone</u>   | <u>Address</u>                         |
|-------------------------------------|---------------|--|----------------|---|----------------|--|
| Carbondale 1                        | Jackson       | Plastic #1 & #2, paper, cardboard, glass (brown, clear, green), aluminum cans, steel(tin) cans | Public         | <a href="https://explorecarbon dale.com/171/Refuse-Recycling-Landscape-Special-Progr">https://explorecarbon dale.com/171/Refuse-Recycling-Landscape-Special-Progr</a> | (618) 457-3275 | 875 E Grand Ave, Carbondale, IL 62901  |
| Carbondale 2                        | Jackson       | Plastic #1 & #2, paper, cardboard, glass (brown, clear, green), aluminum cans, steel(tin) cans | Public         | <a href="https://explorecarbon dale.com/171/Refuse-Recycling-Landscape-Special-Progr">https://explorecarbon dale.com/171/Refuse-Recycling-Landscape-Special-Progr</a> | (618) 457-3275 | 700 S Oakland Ave Carbondale, IL 62901 |
| Carbondale 3                        | Jackson       | Plastic #1 & #2, paper, glass (brown, clear, green), aluminum cans, steel(tin) cans            | Public         | <a href="https://explorecarbon dale.com/171/Refuse-Recycling-Landscape-Special-Progr">https://explorecarbon dale.com/171/Refuse-Recycling-Landscape-Special-Progr</a> | (618) 457-3275 | 610 E College St Carbondale, IL 62901  |

Table 14 - Composting Facilities

| <u>Composting Facilities</u> | <u>County</u> | <u>Materials Accepted</u> | <u>Open to</u>  | <u>Website</u> | <u>Phone</u>   | <u>Address</u>                         |
|------------------------------|---------------|---------------------------|---|----------------|----------------|--|
| New Earth Compost            | Williamson    | Landscaping waste         | Commercial haulers, public (call ahead for appointment) |                | (618) 985-5007 | 11189 Samuel Rd, Carterville, IL 62918 |

Table 15 - Specialty Item Collection Locations

| <u>Specialty Items</u>                    | <u>County</u> | <u>Materials Accepted</u>  | <u>Open to</u> | <u>Website</u>  | <u>Phone</u>   | <u>Address</u>                            |
|---|---------------|--|----------------|---|----------------|---|
| Egyptian Electric Cooperative Association | Jackson       | CFL lightbulbs   | Public         | <a href="https://eeca.coop/member-services/programs-services/">https://eeca.coop/member-services/programs-services/</a> | 800-606-1505   | 1732 Finney Rd, Murphysboro, IL 62966     |
| Midwest Tire Disposal                     | Franklin      | Tires (fee to dispose)   | Public         | <a href="https://midwesttiredisposal.com/">https://midwesttiredisposal.com/</a>   | 877-617-3294   | 340 E Illinois Ave Benton, IL 62814       |
| Jackson County Health Department          | Jackson       | CFL lightbulbs, Batteries: li-ion, small sealed lead acid, Ni-Cd, Ni-MH, Ni-Zn, button and coin cells, old cell phones | Public         | <a href="https://jchdonline.org/recycle-jackson-county/">https://jchdonline.org/recycle-jackson-county/</a>             | (618) 684-3143 | 415 Health Dept. Rd Murphysboro, IL 62966 |

## Medicine and Sharps

Most pharmacies, hospitals, and county health departments have locations to drop off unwanted medications. Call your nearest facility to ask for details or visit <https://medtakebackillinois.org/>

Jackson County has several locations that take sharps, this program was organized by the Jackson County Health Department and grant funded through IEPA.

Table 16 - Sharps Collection Sites

| <u>Medical sharps disposal</u>   | <u>County</u> | <u>Materials Accepted</u>                           | <u>Open to</u> | <u>Website</u>  | <u>Phone</u> | <u>Address</u>  |
|----------------------------------|---------------|---|----------------|---|--------------|---|
| Shawnee Health - Murphysboro     | Jackson       | needles, syringes, auto-injectors (EpiPen), lancets | Public         | <a href="https://medtakebackillinois.org/">https://medtakebackillinois.org/</a> | 618-684-3143 | 7 Hospital Dr<br>Murphysboro, IL<br>62966               |
| Shawnee Health - Carbondale      | Jackson       | needles, syringes, auto-injectors (EpiPen), lancets | Public         | <a href="https://medtakebackillinois.org/">https://medtakebackillinois.org/</a> | 618-684-3144 | 400 S Lewis Ln<br>Carbondale, IL<br>62901               |
| SIU Student Health Services      | Jackson       | needles, syringes, auto-injectors (EpiPen), lancets | Public         | <a href="https://medtakebackillinois.org/">https://medtakebackillinois.org/</a> | 618-684-3145 | 374 E Grand Ave<br>Carbondale, IL<br>62901              |
| Jackson County Health Department | Jackson       | needles, syringes, auto-injectors (EpiPen), lancets | Public         | <a href="https://medtakebackillinois.org/">https://medtakebackillinois.org/</a> | 618-684-3146 | 415 Health<br>Department Rd<br>Murphysboro, IL<br>62966 |
| Jackson County Ambulance Service | Jackson       | needles, syringes, auto-injectors (EpiPen), lancets | Public         | <a href="https://medtakebackillinois.org/">https://medtakebackillinois.org/</a> | 618-684-3147 | 10169 Old Highway<br>13 Murphysboro, IL<br>62966        |

#### 4.5. Specialty Events

In addition to these facilities, Perry County and surrounding communities occasionally host special events for bulk item disposal, specialty recycling, and more. The table below shows annual events, this list may not include all waste & recycling events in the area, and event dates may change from year to year. Some events require proof of residency. Check with the event host or your local government for details. Many cities and villages also host their own community clean up days, check the municipal survey section for details.

Table 17 - Perry County Events

| <u>Event</u>                           | <u>Items Accepted</u>  | <u>Items Prohibited</u>              | <u>Location(s)</u>               | <u>City</u>   | <u>County</u> | <u>Date(s)</u>                |
|--|--|--------------------------------------|----------------------------------|---------------|---------------|-------------------------------|
| Perry County Free Dump Days            | Any normally accepted household waste, Perry County Residents only | No businesses, dump trucks, or semis | Perry Ridge Landfill             | Du Quoin      | Perry         | 1st weekend of June each year |
| Perry County Electronics Recycling Day | electronics, appliances, and metals                                |                                      | Perry County Government Building | Pinckneyville | Perry         | 1st weekend of June each year |
| Perry County Document Shredding        | documents  |                                      | Perry County Highway Department  | Pinckneyville | Perry         | 1st weekend of June each year |



Table 18 - Regional Events




| Event                                    | Items Accepted   | Items Prohibited   | Location(s)   | City        | County     | Date(s)  |
|--|--|--|---|-------------|------------|--|
| Rend Lake Christmas Tree Recycling       | Live Christmas trees only  |  | Rend Lake: Sugar Creek parking lot, Dam West boat ramp, Jack Branch boat ramp; Mt Vernon: Veteran's Park, Optimist Park; Marion: Ray Fosse Park, Pyramid Park | Multiple    | Multiple   | First 2 weeks of January   |
| Williamson County Fall Clean Up          | Municipal solid waste, electronics, tires (4 car tires per household), white goods, automotive batteries (1 per household), recyclables, plastics, metal | Yard waste, medical waste, sharps, chemicals, shingles, hazardous waste, paint   | Republic Services Herrin Transfer Station   | Herrin      | Williamson | Spring & Fall Each Year  |
| Shred, Med, and Sharps Disposal Day      | Documents to be shredded (2 boxes per household), unwanted medications (pills, creams, and patches), medical sharps                                      | Liquid medication, inhalers  | Jackson County Health Department  | Murphysboro | Jackson    | Spring and fall each year  |
| Household Hazardous Materials Collection | Household chemicals, motor oil, many others- see list prior to each event in case of changes   | explosives/ammunition/ fireworks, propane tanks, radioactive waste, medical waste, single use batteries, electronics/appliances, sharps, controlled substances | SIU Banterra Center Lot<br>Appointments required, free registration through Jackson County Health Dept Website  | Carbondale  | Jackson    | June of each year<br>Nov 2024, (fall date one-time event unless JCHD continues to receive funding) |

| Event                      | Items Accepted   | Items Prohibited                                | Location(s)  | City        | County  | Date(s)              |
|----------------------------|--|---|--|-------------|---------|----------------------|
| Apple Fest Shredding Event | Documents to be shredded   |   | Apple Fest   | Murphysboro | Jackson | One time event       |
| Pumpkin Smash              | Clean (no paint, wax, or other chemicals) pumpkins & gourds      | No plastic or foam pumpkins, organic waste only | SIU Farms  | Carbondale  | Jackson | November each year   |
| Compost Bin Sale           | NA   | NA  | Uofl Extension - Jackson County  | Murphysboro | Jackson | One time event       |
| Holiday Lights Collection  | Holiday light strands  | bulbs and lamps                                 | CRC Recycling  | Carbondale  | Jackson | January of each year |
| Paint Swap                 | useable (not dried or contaminated) paints - household and craft |   | Has been hosted by Keep Carbondale Beautiful in the past, date may vary, does not occur every year |             |         |                      |

## 5. Municipal Surveys

A short survey was sent to every city and village in Perry County at the beginning of the planning process. Below are the questions and summarized responses. Completing this form qualifies the municipal participation requirement of this plan.

**Perry County Solid Waste Management Plan**  
**Questionnaire for municipalities**



Name of City/Village:

1) Does your municipality have scheduled trash pick-up?  Yes  No  
If yes, Does the municipality run the program or do you contract with a private hauling company?

2) Does your municipality have scheduled recycling pickup?  Yes  No  
If yes, Does the municipality run the program or do you contract with a private hauling company?

3) Does your municipality have scheduled yard waste pickup?  Yes  No  
If yes, Does the municipality run the program or do you contract with a private hauling company, and how is the yard waste disposed of (composting center, chipped, burned)?

4) Does your municipality have recycling drop off locations?  Yes  No  
Locations:

5) Does your municipality have electronic recycling events?  Yes  No  
Frequency & locations:

6) Does your municipality conduct large waste pickup events or host free dump days? (Furniture, home construction waste, etc.)  Yes  No

Frequency & locations:

7) If your municipality is lacking waste services, would you like to suggest any for future consideration? These suggestions will be added into the Plan but you will not be required to implement them. (Can be suggested but contingent on funding/resources)

8) If you have any other comments regarding the Plan, please let us know:

List of representatives:

| City/Village  | Representative | Rep. Title           |
|---------------|----------------|----------------------|
| Cutler        | Daniel Curry   | Trustee              |
| Du Quion      | Ruth Hale      | City Clerk           |
| Pinckneyville | Robert Spencer | Mayor                |
| St. Johns     | Ruth Hawkins   | Village Board Member |
| Tamaroa       | Cheryl Oettle  | Village Clerk        |
| Willisville   | Renee Langwith | Village Clerk        |

Summary of responses:

| Trash Pickup? |   |
|---------------|---|
| Yes           | 3 |
| No            | 3 |

| Recycling Pickup? |   |
|-------------------|---|
| Yes               | 0 |
| No                | 6 |

| Yard Waste Pickup? |   |
|--------------------|---|
| Yes                | 1 |
| No                 | 5 |

| Recycling Drop-off? |   |
|---------------------|---|
| Yes                 | 0 |
| No                  | 6 |

| Electronic Recycling? |   |
|-----------------------|---|
| Yes                   | 0 |
| No                    | 6 |

| Clean up/dump day Events? |   |
|---------------------------|---|
| Yes                       | 3 |
| No                        | 3 |

Full Responses:

| City/Village  | Trash Pickup? | Trash Company    | Recycling Pickup? | Recycling Company |
|---------------|---------------|------------------|-------------------|-------------------|
| Cutler        | Yes           | Lloyd Hauling    | No                |                   |
| Du Quion      | No            |                  | No                |                   |
| Pinckneyville | Yes           | Residents Choose | No                |                   |
| St. Johns     | No            |                  | No                |                   |
| Tamaroa       | No            |                  | No                |                   |
| Willisville   | Yes           | Lloyd Hauling    | No                |                   |

| City/Village  | Yard Waste Pickup? | Yard Waste Company                              | Recycling Drop-off? | Drop-off location |
|---------------|--------------------|---|---------------------|-------------------|
| Cutler        | No                 |   | No                  |                   |
| Du Quion      | No                 |   | No                  |                   |
| Pinckneyville | Yes                | Street Department picks up, composts, and burns | No                  |                   |
| St. Johns     | No                 |   | No                  |                   |
| Tamaroa       | No                 |   | No                  |                   |
| Willisville   | No                 |   | No                  |                   |

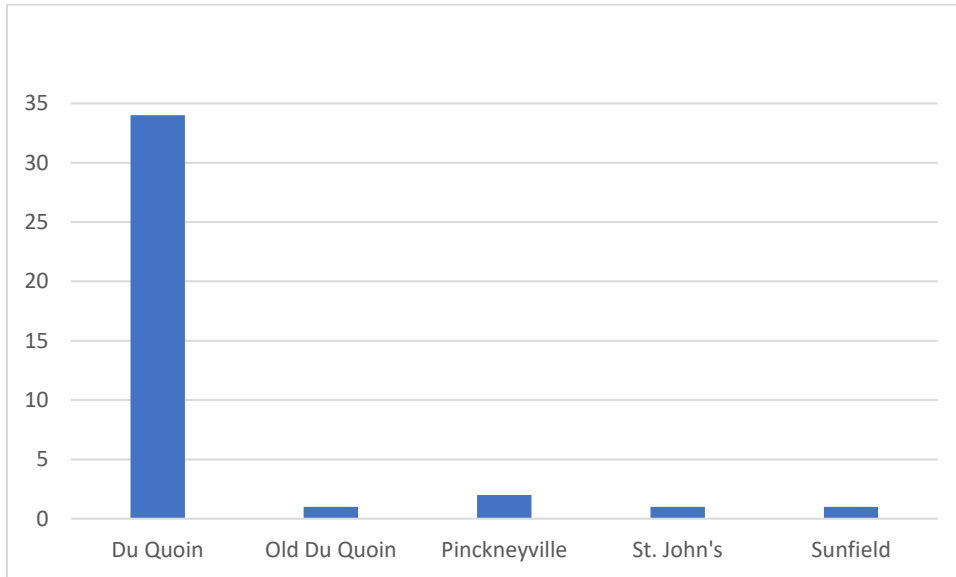
| City/Village  | Electronic Recycling? | Frequency/Location for Electronics | Clean up/dump days | Frequency/Location for Events                    |
|---------------|-----------------------|------------------------------------|--------------------|--|
| Cutler        | No                    |                                    | Yes                | Once a year, town cleanup, workers collect items |
| Du Quion      | No                    |                                    | No                 |  |
| Pinckneyville | No                    |                                    | No                 |  |
| St. Johns     | No                    |                                    | No                 |  |
| Tamaroa       | No                    |                                    | Yes                | Once a year or less                              |
| Willisville   | No                    |                                    | Yes                | Yearly event                                     |

| City/Village  | Suggestions  | Comments |
|---------------|--|----------|
| Cutler        |  |          |
| Du Quion      | City would benefit from a couple of city wide clean-up days where citizens can drop off items or have them picked up from the curb. We would need funding for either a haul off company or the landfill fees |          |
| Pinckneyville | Offer recycling more than once per year, provide a drop-off location for electronic recycling  |          |
| St. Johns     |  |          |
| Tamaroa       |  |          |
| Willisville   |  |          |

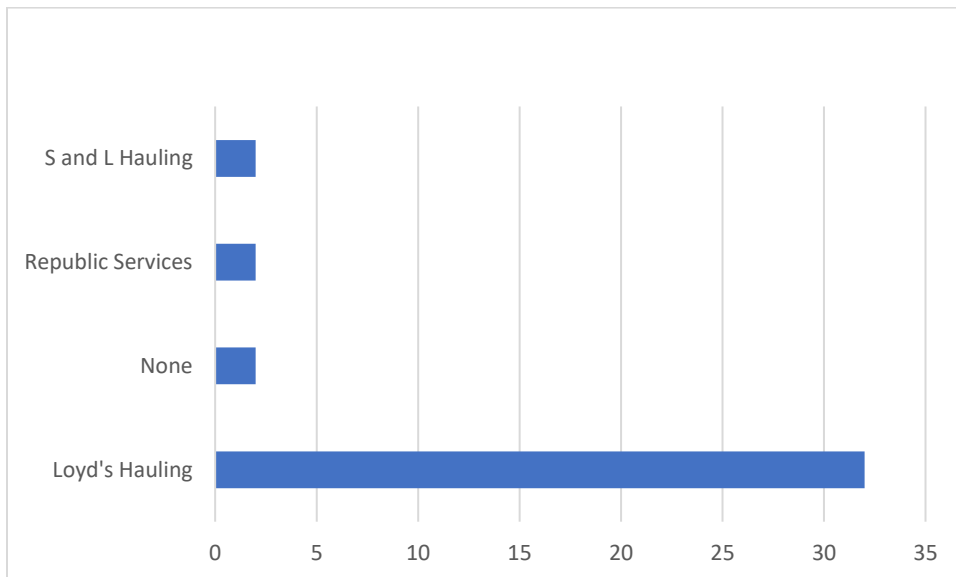
## 6. Public Survey

Total Responses: 39

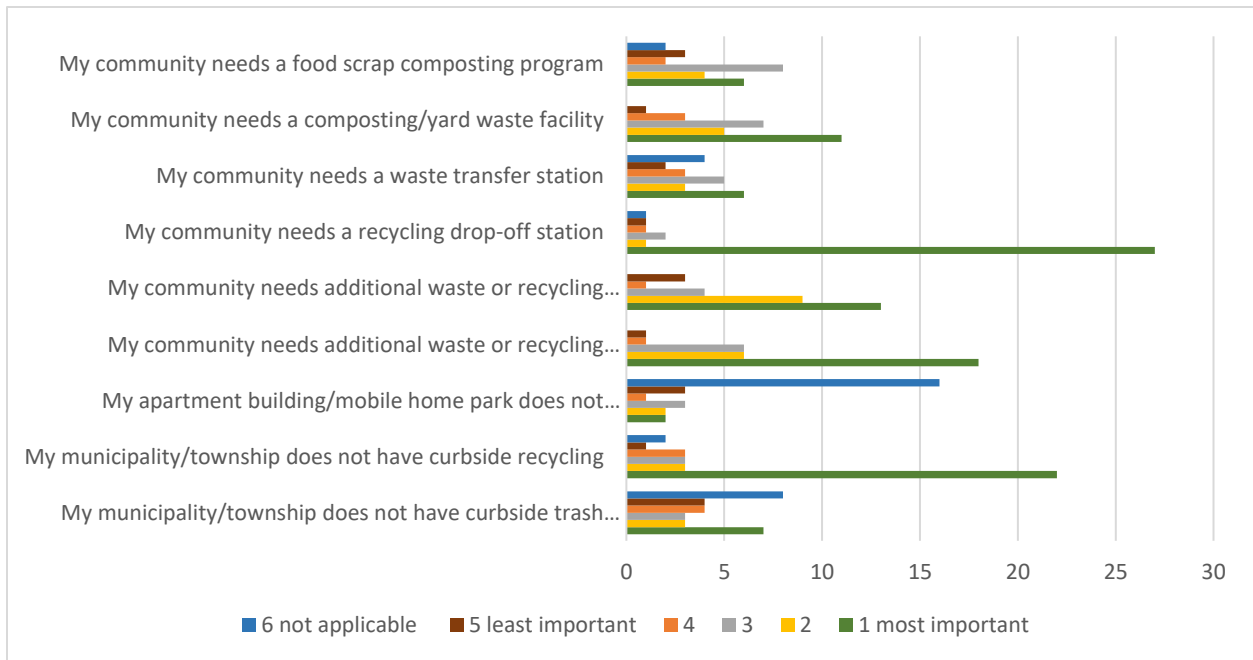
1. What city, village, or township do you live in?



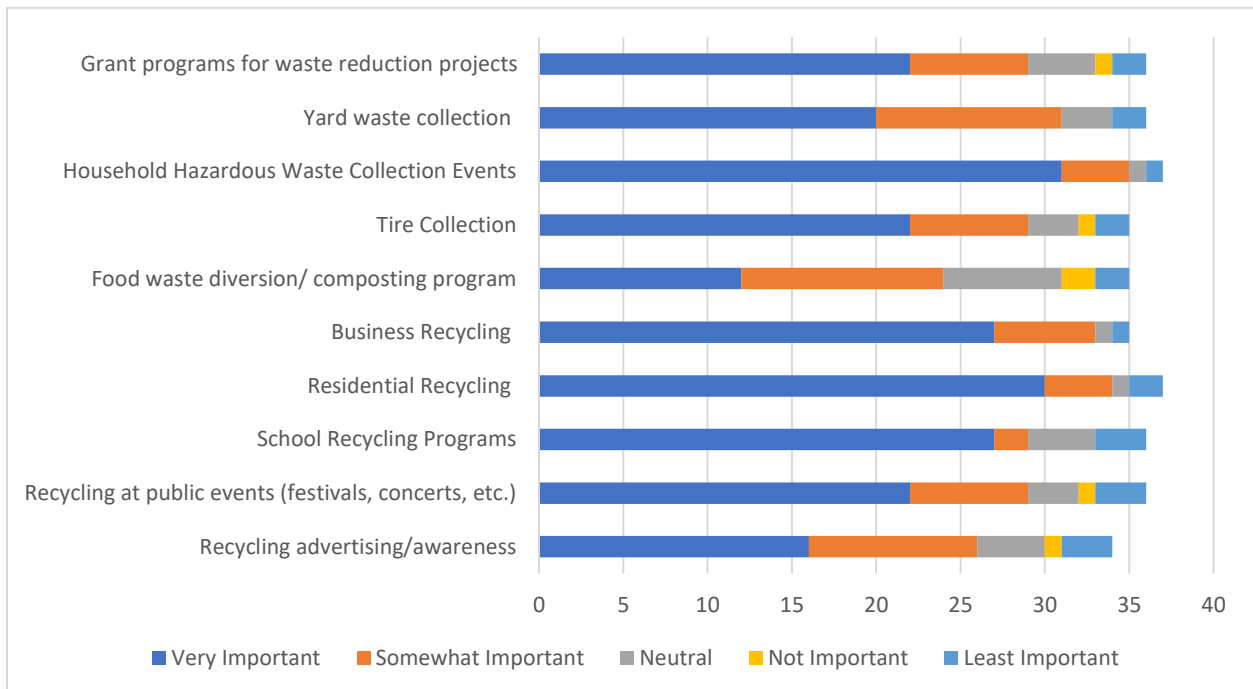
2. Who is your waste hauler?



3. What do you see as the biggest waste and recycling issues you face within your community in the next 5 – 20 years? These suggestions will be used to analyze needs and plan for the next 5 – 20 years.

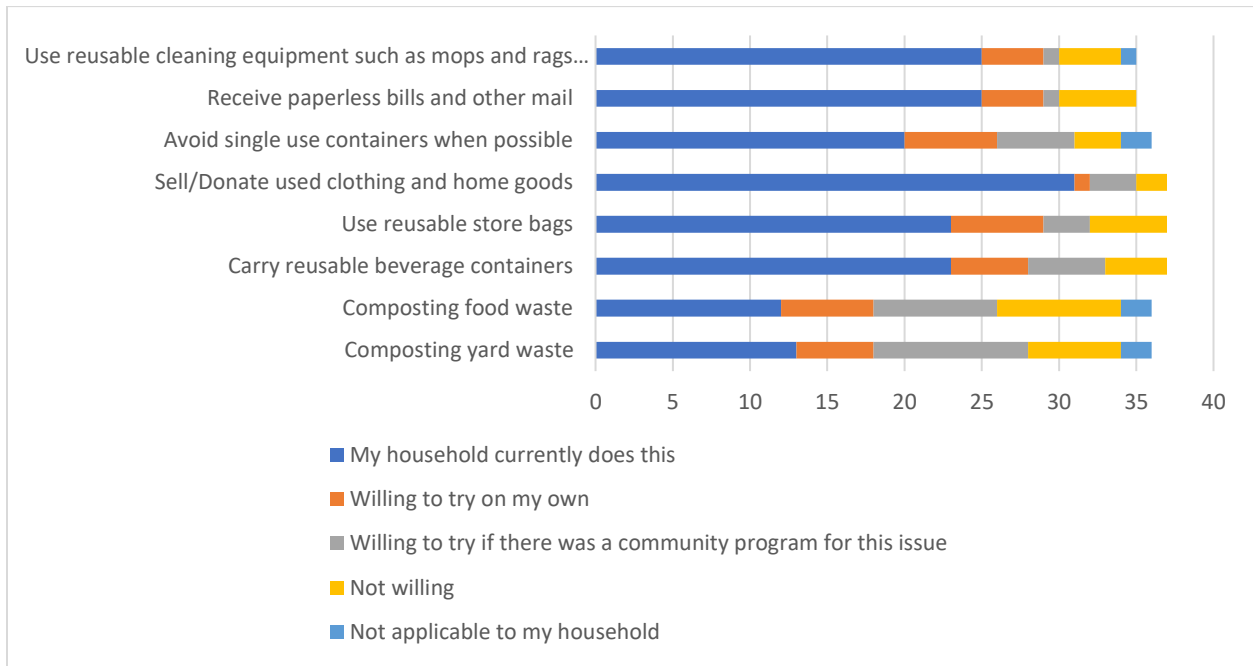


4. In your opinion, what is the importance of the following potential and existing waste management programs in Perry County?





5. How willing would your household be in utilizing any of the following waste reduction techniques?



6. In your opinion, what is the biggest issue regarding solid waste and recycling management in Perry County, IL?

|  |
|--|
| There is no longer a recycling collection point in DuQuoin. The Pinckneyville site is often full.                      |
| Cost   |
| No recycling drop off in du Quoin  |
| No recycling in Du Quoin   |
| No public facilities   |
| Facilities, programs and information availability.   |
| Driving across the county to recycle   |
| Not enough availability  |
| I currently have to haul our recycling out of Perry county to drop off   |
| There is only one spot to recycle and it always seems to be full plus it isn't in our town but closer to Pinckneyville |
| Affordability and access - too many yards gathering trash items they cant afford or sbke to dispose of                 |
| Cost & people misusing the current recycling bins  |
| It is not easy to get rid of paint cans, electrical items and anything trash company will not take.                    |
| There is no place to get rid of yard waste.  |

|  |
|--|
| Curbside pickup or more collection bins  |
| Recycling used to have drop off spots outside of town but that has been removed and now it's difficult to get recycling products without paying for a container. |
| No recycling center  |
| Need recycling bins in town  |
| I live in rural DuQuoin & currently pay Second Cycle to pick up my paper & plastics recycling totes. I don't think enough people realize this is an option.      |
| None   |
| Curbside pickup not offered  |
| Enough containers and locations  |
| Recycling access is limited.   |
| I've utilized Second Cycle since we lost service. Wonderful business . Plastic recycling ends up in landfill anyway. Community should be educated on this.       |
| We have no recycling center close by   |
| Letting other towns dump their waste in Perry county   |
| Not enough areas to recycle and people not following directions.   |
| No public recycling center in DuQuoin like there used to. We now pay a company to collect recycling but would be nice to have a public bin                       |
| Large item removal - mattresses  |
| We need our recycling containers back  |
| Cost   |
| Not cost effective   |
| Plastic  |

7. In your opinion, what is the biggest success regarding solid waste and recycling management in Perry County, IL?

|  |
|--|
| Having it available to begin with is nice. |
| Seeing it used                             |
| Local landfill and local trash company     |
| Local trash company- Loyd is the best      |
| They had a station for years               |
| Free dump day and disposal programs.       |
| At this point I don't see successes        |
| Cuts down on trash                         |
| None                                       |
| Not sure there is one.                     |

|   |
|---|
| Unsure of what has been done  |
| Free dump day   |
| We have good yeah pick up company's and have recycling for those who choose to do it at the Perry Co gov building   |
| There isn't anything available. There used to be a recycling bin center but the ex-mayor discontinued the services.   |
| Current bin is full a lot.  |
| Without curbside recycling or a facility to drop of recycling materials, it is an utter failure.  |
| I love the free dump days for county residents  |
| I think Perry County is legitimately trying to offer recycling drop off facilities but there is a small percentage of the general public that keeps abusing these benefits. |
| NA  |
| Community clean up days   |
| There is a recycling company that we personally pay to use for residential and commercial use.  |
| Your hazardous waste pick up days.  |
| Bad   |
| That people do use the one area that is available   |
| Local landfill and our trash service does a great job   |
| Recycling option for home pick up   |
| Independent waste management stepping up  |
| None  |

8. If you have any other ideas, comments, goals or suggestions you would like to see in the Perry County Solid Waste and Recycling Plan OR if you would like to highlight a local recycling hero, please let us know!

|  |
|--|
| A recycling drop-off point in DuQuoin.   |
| Additional recycling/disposal opportunities(i.e. dump day, haz waste drop off, electronics disposal, etc.) and city provided leaf disposal in the fall via vacuum truck. This would improve air quality and could possibly create a future revenue stream by selling leaf mulch. |
| Second Cycle has been awesome in stepping in where we do not have other options!   |
| Annual or biannual free trash pick up days for city beautification and sanitation  |
| Retail stores should charge for single use bags and you can bring the bags back to use the next time. They do this in CA and CO. The bags are of good quality so several uses are the point.   |
| Betty Mc Cormick Elders is almost 89 years old, lives in Du Quoin, and has always recycled and still recycles everything she possibly can, hauling it wherever she has to in order to do so.   |
| NA   |

|  |
|--|
| Need yard waste curbside pickup for those who have no way to burn or dispose of  |
| Perry county lacks a solution for yard waste   |
| Really need more tire collection services. Used tires help fuel the mosquito problems we have and it's very difficult to get rid of them. Would be nice to have tire collection that could include commercial tires also ( semi, ag tires) |
| Low income or disabled persons property clean up   |

## 7. Hauler Survey

An attempt was made to collect opinions from waste haulers that operate in the southern Illinois region.

List of haulers that were contacted with a request to take the survey (highlighted names indicate a response):

|                                   |
|-----------------------------------|
| Big Dawg Disposal                 |
| Bulldog Waste Services            |
| City of Carbondale                |
| DS Dumpsters Rental, LLC          |
| Ed Burris Disposal Service        |
| Effingham County Transfer Station |
| Loyd's Hauling                    |
| McVicker Excavating               |
| Millstadt Rendering Co            |
| Northwind Dumpster Rentals        |
| Quivey Sanitation, Inc.           |
| Rapid Roll Off                    |
| Republic Services                 |
| Rural Trash Services, LLC         |
| Second Cycle, LLC                 |
| SI Waste Container                |

Summarized Responses:

| What services do you provide?   |                   |                         |   |   |                   |   |
|---|-------------------|-------------------------|---|---|-------------------|---|
| Rural Trash Services LLC  | Big Dawg Disposal | Quivey Sanitation, Inc. | Republic Services, Inc.   | City of Carbondale                              | Second Cycle, LLC | Services  |
| x   |                   | x                       | x   | x   |                   | curbside trash hauling  |
| x   |                   |                         | x   | x   | x                 | curbside recycling  |
| x   |                   | x                       | x   | x   |                   | commercial trash  |
| x   |                   |                         | x   |   | x                 | commercial recycling  |
|   | x                 | x                       | x   |   |                   | roll off dumpster rentals                                       |
|   |                   | x                       | x   |   |                   | contract with cities for curbside program (trash only)          |
|   |                   |                         | x   |   |                   | contract with cities for curbside program (trash and recycling) |
|   |                   |                         | x   | x   |                   | yard waste composting   |
|   |                   |                         |   |   |                   | food waste composting   |
|   |                   |                         |   |   |                   | restaurant oil recycling  |
|   |                   |                         | x   | x   |                   | other   |
| <b>If you offer services not listed in the above question, please describe them here:</b> |                   |                         |   |   |                   |   |
|   |                   |                         | Bulk Item Pickup - customer calls for a one-time pickup for a large item or a larger number of bagged items | yard waste pick up program, leaf vacuum service |                   |   |

| What Counties do you provide services for? Please list all IL counties even if outside of the Greater Egypt region. |                   |                         |                         |                    |                   |            |
|---|-------------------|-------------------------|-------------------------|--------------------|-------------------|------------|
| Rural Trash Services LLC  | Big Dawg Disposal | Quivey Sanitation, Inc. | Republic Services, Inc. | City of Carbondale | Second Cycle, LLC | Counties   |
|   |                   |                         | x                       |                    |                   | Clay       |
|   | x                 |                         |                         |                    |                   | Clinton    |
|   | x                 |                         | x                       |                    |                   | Franklin   |
|   |                   |                         | x                       |                    |                   | Gallatin   |
|   | x                 |                         | x                       |                    |                   | Hamilton   |
|   |                   |                         | x                       |                    |                   | Hardin     |
| x   | x                 | x                       | x                       | x                  | x                 | Jackson    |
|   | x                 |                         | x                       |                    |                   | Jefferson  |
|   |                   |                         | x                       |                    |                   | Johnson    |
|   | x                 |                         | x                       |                    |                   | Marion     |
|   |                   |                         | x                       |                    |                   | Massac     |
|   |                   | x                       |                         |                    |                   | Monroe     |
| x   | x                 |                         | x                       |                    | x                 | Perry      |
|   |                   |                         | x                       |                    |                   | Pope       |
|   | x                 | x                       | x                       |                    |                   | Randolph   |
|   | x                 |                         | x                       |                    |                   | Saline     |
|   | x                 |                         |                         |                    |                   | St. Clair  |
|   |                   |                         | x                       |                    | x                 | Union      |
|   | x                 |                         | x                       |                    |                   | Washington |
|   | x                 |                         | x                       |                    |                   | Wayne      |
|   |                   |                         | x                       |                    |                   | White      |
|   | x                 |                         | x                       |                    |                   | Williamson |

| Where do you take the waste that you collect? List all transfer stations and landfills that your company utilizes |                   |                         |                         |                    |                   |                                     |
|---|-------------------|-------------------------|-------------------------|--------------------|-------------------|-------------------------------------|
| Rural Trash Services LLC  | Big Dawg Disposal | Quivey Sanitation, Inc. | Republic Services, Inc. | City of Carbondale | Second Cycle, LLC | Disposal Locations                  |
| x   | x                 | x                       |                         |                    |                   | Perry Ridge Landfill                |
|   | x                 |                         |                         |                    |                   | West End Landfill                   |
|   |                   |                         | x                       | x                  |                   | Southern Illinois Regional Landfill |
|   |                   |                         | x                       |                    |                   | Herrin Transfer Station             |
|   |                   |                         | x                       |                    |                   | Mt. Vernon Transfer Station         |

| Where do you take the recycling that you collect? List all facilities that your company utilizes |                   |                         |                         |                    |                   |   |
|--|-------------------|-------------------------|-------------------------|--------------------|-------------------|---|
| Rural Trash Services LLC   | Big Dawg Disposal | Quivey Sanitation, Inc. | Republic Services, Inc. | City of Carbondale | Second Cycle, LLC | Disposal Locations                        |
| x  | x                 |                         |                         | x                  | x                 | Southern Recycling (Now CRC recycling)    |
| x  |                   |                         |                         |                    |                   | TNT Metal                                 |
|  |                   |                         | x                       |                    |                   | Herrin Transfer Station                   |
|  |                   |                         | x                       |                    |                   | Republic Services Recycling Southside MRF |

| Where do you take the yard waste that you collect? List all facilities that your company utilizes |                   |                         |                         |                    |                   |                                |
|---|-------------------|-------------------------|-------------------------|--------------------|-------------------|--------------------------------|
| Rural Trash Services LLC  | Big Dawg Disposal | Quivey Sanitation, Inc. | Republic Services, Inc. | City of Carbondale | Second Cycle, LLC | Disposal Locations             |
| NA  | NA                | NA                      | x                       | x                  | NA                | New Earth Compost, Carterville |



| If you offer trash hauling but not recycling, what are the reasons preventing your company from providing this service? |                   |                                      |                         |                    |                   |
|---|-------------------|--------------------------------------|-------------------------|--------------------|-------------------|
| Rural Trash Services LLC  | Big Dawg Disposal | Quivey Sanitation, Inc.              | Republic Services, Inc. | City of Carbondale | Second Cycle, LLC |
| Plastic recycling is limited to only grade 1 and 2  | NA                | Recycling is expensive to get rid of | NA                      | NA                 | NA                |

| What are some issues that your company faces? Check all that apply |                   |                         |                         |                                 |                   |  |
|--|-------------------|-------------------------|-------------------------|---------------------------------|-------------------|--|
| Rural Trash Services LLC   | Big Dawg Disposal | Quivey Sanitation, Inc. | Republic Services, Inc. | City of Carbondale              | Second Cycle, LLC | Disposal Locations   |
|  | x                 | x                       | x                       |                                 |                   | Cost of landfill/transfer station disposal                             |
| x  | x                 |                         | x                       |                                 |                   | Cost of recycling  |
|  |                   |                         |                         |                                 |                   | Lack of transfer stations in the southern Illinois area                |
| x  |                   |                         |                         |                                 |                   | Lack of recycling facilities in the southern Illinois area             |
| x  |                   |                         | x                       | x                               |                   | Lack of yard waste composting facilities in the southern Illinois area |
| x  |                   |                         | x                       | x                               | x                 | recycling contamination  |
|  |                   |                         |                         |                                 |                   | loss of customers  |
|  | x                 |                         |                         | x                               |                   | difficult to hire and/or retain staff                                  |
| x  |                   |                         |                         |                                 |                   | rural areas difficult to service                                       |
|  |                   |                         |                         | personnel and mechanical issues |                   | other (explain)  |

| If food waste composting was an option in southern Illinois, is this a service your company could provide hauling for? |                   |                         |                         |                    |                   |                     |
|--|-------------------|-------------------------|-------------------------|--------------------|-------------------|---------------------|
| Rural Trash Services LLC   | Big Dawg Disposal | Quivey Sanitation, Inc. | Republic Services, Inc. | City of Carbondale | Second Cycle, LLC |                     |
|  |                   |                         |                         |                    | x                 | Yes                 |
| x  |                   | x                       |                         | x                  |                   | No                  |
|  | x                 |                         | x                       |                    |                   | Unsure at this time |

## 8. Management Strategies

Note this section contains all management strategies suggested for the Greater Egypt Region (Franklin, Jefferson, Jackson, Perry, and Williamson Counties) since any upgrades to the waste & recycling industry in any county will benefit the entire region.

Table 19 - Solid Waste and Recycling Management Strategies, Equipment Needs, and Project Ideas

| Strategy   | Details/comments and potential benefits  | Proposed by                             | Implementation Timeframe  | Cost Estimate   | Potential funding source  |
|--|--|---|---|---|---|
| <b>Curbside recycling program</b>                        | Curbside recycling is the most effective way to increase recycling and divert waste from landfills, however this is also a costly service that would likely have to be added to residents' bills. Many municipalities do not want to raise rates for their residents and have opted not to have this service, even if their contracted hauler offers it. Contamination is still an issue in curbside programs, but it is easier to manage than drop-off sites.   | multiple municipalities                 | 1-20 years. Services are already available from multiple haulers, up to each city/village to implement a program. | Contract varies depending on hauling company and size of municipality.  | Curbside recycling is largely up to the municipality and hauling company that they contract with. Some haulers do not have the proper equipment to offer recycling as part of their services. Haulers that do offer curbside recycling usually charge an additional fee for the service, that would have to either be paid by the municipality or passed on to residents as a part of their trash bill. |
| <b>Recycling drop-off bins</b>                           | While many members of the public have interest in more recycling stations, most municipalities have stated they are not effective. Unstaffed drop-off sites become filled with bag contamination, unrecyclable trash, and large dumped items. It becomes a large burden on the agency managing the site to sort out the trash. For drop-off stations to be a viable solution to increase recycling, they need to be staffed or have security cameras in place with a system to enforce the rules, which adds additional costs. | multiple municipalities, public surveys | 1-20 years. Services are already available from multiple haulers, up to each city/village to implement a program. | Green compartment trailers- \$20,000 each, Cardboard cage trailer- \$5,000, trailer maintenance, staff time, and dumping cost per year- \$20,000 per site. Some haulers own trailers that municipalities can pay for as a part of their waste contract and is maintained by the company, the fee for this service varies by contract but is around \$500/month. | EPA Solid Waste Infrastructure for Recycling Grants for Communities, Drop-off Recycling Program Grant   |
| <b>More frequent dumping of current recycle stations</b> | A frequent complaint in the public surveys is that current recycle drop-off stations are not emptied frequently enough. Bins are often full and overflowing and people spend time loading their recyclables and driving to the site, only to be unable to get rid of their items.  | public surveys                          | 1-20 years.   | Depending on the hauler and contract, the cost to maintain a recycling drop off sites ranges from \$400-1,7000 per month, adding additional days to empty the bins would raise this cost.   | Increase resident trash/recycle bills, budget from municipal funds in other ways, grant programs  |

| Strategy  | Details/comments and potential benefits   | Proposed by  | Implementation Timeframe  | Cost Estimate  | Potential funding source   |
|---|---|--|---|--|--|
| <b>More electronics recycling events</b>  | Multiple cities as well as comments from the public surveys have shown there is community interest in recycling more electronics. There are few places that take these items and cost varies.   | multiple municipalities, Support from CRC Southern Recycling     | 1-20 years  | Cost would vary by amount of electronics recycled. CRC is interested in helping communities set up drives, they would be able to offer quotes on the price. There may also be future opportunities from electronics manufacturers in accordance with the Consumer Electronics Recycling Act. | Depending on who coordinates the drive, funding could come from manufacturers, donations, grants, or municipal funds.  |
| <b>More household hazardous waste events</b>  | Currently, the southern Illinois region only has one annual household hazardous material pickup event, sponsored by the Jackson County Health Department and IEPA. It is hugely popular but can be difficult for some people to attend.   | Municipal & public surveys                                       | 1-20 years. JCHD has procured funds to host two events in 2024 – November and June.             | Cost to host a single day event is around \$60,000-\$70,000 if self-funded.<br>To host an event, interested parties can also apply to IEPA and they fund it if selected  | County funds, grants, IEPA<br>JCHD typically is able to host events with funds generated from landfill tipping fees that go into the county solid waste fund |
| <b>More opportunities for lightbulb recycling</b>   | Currently there are only locations that recycle CFL bulbs and holiday lights. There are no options for incandescent, florescent, or LED lights in the region. Typically, only lights that contain mercury are recycled for environmental health reasons. It may not be cost effective to recycle other bulb types, but having more locations to recycle mercury-containing bulbs would be beneficial.   | Mt. Vernon   | 1-20 years  | Variable depending on scale of program and end location of bulbs. (collection and shipping costs)  | Grants, partnership with electric providers  |
| <b>Education/Outreach campaign to raise awareness on recycling contamination &amp; other local issues</b> | Every entity that is a part of the recycling industry, from haulers to municipalities to have stated that recycling contamination is a huge issue. Materials have to be loose to be sorted at recycling processing centers. Items in bags significantly increase staff time on the sorting lines, bags and other unwanted items can clog machinery and create other problems. Other contaminants reported at drop off sites have ranged from household waste to cat litter and dumped furniture. Staff time and landfill fees to sort these items can also be significant. Several entities have expressed interest in education programs to try and alert the public of this issue and increase proper use of recycling services | JCHD   | 1-3 years. JCHD intends to apply for funds for various outreach campaigns in the next few years | Funds needed to be determined. Likely \$100,000-500,000.   | Consumer Recycling Education and Outreach Grant Program  |
| <b>Create a food waste composting program in southern Illinois</b>  | There is a growing interest in food waste composting in the area, a possible location would be in the Carbondale area of Jackson County. There is some interest from the City depending on feasibility and cost-effectiveness   | JCHD, public surveys, Food Recovery & Waste Reduction Initiative | 1-20 years  | Cost estimate unknown, a feasibility study would likely have to take place before any programs are set up. These studies are typically \$150,000 or less.  | Economic development grants may fund such a project if it creates new jobs in the region   |

| Strategy  | Details/comments and potential benefits  | Proposed by                        | Implementation Timeframe | Cost Estimate   | Potential funding source  |
|---|--|------------------------------------|--------------------------|---|---|
| <b>Property clean-up assistance for elderly/disabled residents</b>                      | Some residents may not be physically able to remove large items from their homes or property. It was suggested to set up some sort of program for residents to be able to register for assistance to participate in community clean up days                                | public comment                     | 1-20 years               | Cost would vary by  | Could potentially be part of the public works budget, funded through refuse/recycling fees. Grant program may cover startup costs of such a program |
| <b>City clean up days for municipalities that do not currently host such an event</b>   | Bulk item pickup and community dump events are both largely popular in areas that currently have them. It prevents illegal dumping and junk buildup in yards by providing residents with a free way to get rid of unwanted items.  | municipal surveys                  | 1-20 years               | would vary based on size of community and amount of waste collected   | County or municipal funds, donations or sponsorship   |
| <b>Yard Waste collection programs for municipalities that do not currently have one</b> | Lack of yard waste collection programs or dump sites has been mentioned. Feasibility of implementing a program depends on whether the community has a municipal burning location, or if New Earth Compost would accept additional contracts.                               | public surveys, municipal surveys  | 1-20 years               | Varies by community size. New Earth Compost typically charges by the truckload, but municipal contracts may be different. Piling and burning by city staff would depend on staff needed and their rates of pay.                               | County or municipal funds, donations or sponsorship   |
| <b>Municipal or county yard waste collection sites</b>                                  | There has been some interest in county or local compost sites for yard waste where residents can drive up and dump their yard waste at a central location, and be able to take or purchase compost later.  | public surveys, meeting comments   | 1-20 years               | Cost will vary by area needed, permit types, and equipment needed. Feasibility study would likely have to be [performed first. These studies are typically \$150,000 or less.   | County or municipal funds, grant for initial startup costs may be possible  |
| <b>Tire collection events</b>   | Old tires are a large problem in both rural and urban areas. They are often dumped illegally, or left sitting in yards. Their ability to hold water for breeding mosquitos also make tire waste a public health concern.   | public comments, municipal surveys | 1-20 years               | Collection & disposal costs vary by size of tire and disposal facility fees. Regular vehicle tires typically cost \$2-7 per tire to recycle. Currently, Midwest Tire Disposal in Benton is the only facility in the region that accepts tires | Sponsorships from local tire companies or dealerships, county or municipal funds, possibly a grant for one-time events                              |
| <b>New tire recycling center in Jackson County</b>                                      | The abundance of tires in southern Illinois is a widely documented problem. A new facility to accept and process them may eliminate the issues of illegal dumping of tires and tires being left outside for long periods to collect water and allow for mosquito breeding. | City of Murphysboro                | 5-20 years               | Variable depending on size of facility, but likely in the hundreds of thousands to millions of dollars in construction.   | Economic development grants, or funded by private company if one chooses to build a new facility  |

| Strategy   | Details/comments and potential benefits  | Proposed by                      | Implementation Timeframe | Cost Estimate  | Potential funding source  |
|--|--|----------------------------------|--------------------------|--|---|
| <b>Incentives against using single use plastic &amp; Styrofoam retail stores and restaurants</b> | Multiple comments have expressed concern about single use plastics from retails and the need to reduce this waste. Some states and cities around the country have enacted bans and fees against single use plastic bags and other items. The feasibility of a similar ban in southern Illinois could be explored.  | public surveys                   | 1-20 years               | This would likely be an ordinance or code enacted by county boards and/or city councils. Would probably not have a direct cost on the community.   | NA  |
| <b>Programs to reduce illegal dumping in rural and urban areas</b>                               | Multiple comments during meetings and from surveys have expressed concerns with illegal dump sites, especially along roads and waterways. With the large amount of unpatrolled rural roads, the feasibility of catching dumpers in the act is not a realistic solution. However, offering more community dump day events may eliminate some of the activity.   | Public surveys, meeting comments | 1-20 years               | would vary based on size of community and amount of waste collected  | County or municipal funds, donations or sponsorship   |
| <b>Trash &amp; Recycling cans downtown and in public parks</b>                                   | Many towns in the region do not have waste containers in town or in parks. This could help eliminate some of the littering problem. However, the downside to large outdoor trash cans is that some people may use them to dump their own household waste. Anecdotes from some parks and recreation staff have stated that as a problem in some areas.  | surveys                          | 1-20 years               | Depends on # of containers needed and staff time to empty them. Permanent outdoor receptacles cost around \$400-1,000 each depending on design and brand.  | city budgets, grant programs  |
| <b>Community reuse center</b>  | Suggestions from planning team members in meetings have brought up the idea of a community center to share reusable goods such as furniture, paints, tools, and other items. There are already several thrift stores around southern Illinois, and paint swaps have occurred in the past. Logistics and ownership of a new facility have not been discussed in detail.   | Meeting comments                 | 1-20 years               | Varies on size and location of such a facility. A brand new construction project could be millions of dollars, upgrading an existing thrift store or other business would be significantly less. | This would likely be a collaboration of government funds, non-profit organization funds or volunteer hours, donations, and grants |
| <b>Paint recycling events</b>  | There is a paint factory in Nashville, IL (GBD International) that does recycling. They do not currently have a public program; it has been suggested to reach out to them and see if a community partnership would be possible in the future.   | Perry County                     | 1-20 years               | Would have to get quotes from company if they agree to host events   | County or municipal funds, possibly a sponsorship or donation   |
| <b>Improvements to CRC recycling facility</b>  | CRC would like to add various equipment to increase their in-house processing capabilities: shredder and granulator for rigid plastics, EPS densifier for Styrofoam. They would like to add areas for the public to drop off plastic bags and PVC vinyl siding for recycling. CRC is searching for ways to help communities host electronics drives. The company is also looking for solutions to improve business relations with other local recycling centers and increase cost savings for all parties. | CRC Southern Recycling           | 1-20 years               | Processing equipment would have to be estimated from a contractor/engineer. Costs depend on size and capacity of equipment needed.   | The Recycling Partnership Grants for Processors/Materials Recovery Facilities (MRF), Illinois CDBG, DRA SEDAP                     |

| Strategy  | Details/comments and potential benefits  | Proposed by            | Implementation Timeframe | Cost Estimate   | Potential funding source  |
|---|--|------------------------|--------------------------|---|---|
| <b>Improvements to Progress Port recycling facility</b> | Progress port needs additional trailers to increase their capacity to provide recycling for businesses in the community. They would like the opportunity to recycle electronics as well as plastics 3-7 but there is currently nowhere to take that material. They would like additional funds to cover the costs of glass recycling and the cost of gaylords for paper recycling.   | Progress Port          | 1-20 years               | Cost to purchase a trailer and modify it for recycling is around \$4-6,000 per trailer  | The Recycling Partnership Grants for Processors/Materials Recovery Facilities (MRF), Illinois CDBG, DRA SEDAP |
| <b>Improvements to Do Your Part Recycling Facility</b>  | Do Your Part would like grant funds to hire and retain workers. Equipment needed: a new baler to bale cardboard and plastic, funds to repair or replace aging forklift, an enclosed trailer or box truck for hauling metal. An awning/overhang is needed to store materials before they are shipped out. With this equipment, Do Your Part Recycling would be able to implement residential hauling services to their business to increase their capacity to make a profit and retain staff without the need for continued grants. Currently Do Your Part does not accept glass to recycle because the company they took it to stopped operating. They are considering accepting glass again if they can take it to CRC with other materials, equipment needed for this to be possible is an industrial glass crusher that can break the glass and convey it to safe storage until shipment. | Do Your Part Recycling | 1-20 years               | Box truck cost ranges from \$30-80,000 depending on size and condition. New cardboard balers range from \$17-25,000. Forklift prices range depending on payload capacity, may be up to \$50,000. Glass crusher costs would depend on vendor and machine capacity. | The Recycling Partnership Grants for Processors/Materials Recovery Facilities (MRF), Illinois CDBG, DRA SEDAP |

## 9. Funding Opportunities

The following table shows potential funding opportunities for waste, recycling, infrastructure, and economic development projects. Note this list may not contain every possible grant available, and funding opportunities change from year to year. It is always good practice to do your own research on a specific project before choosing a grant program.

Table 20

| Granting Agency           | Program Name  | Details   | Link  |
|---------------------------|---|---|---|
| US EPA                    | Solid Waste Infrastructure for Recycling Grants for Communities | Establish or expand infrastructure, capacity, or end-use market for recyclable materials  | <a href="https://www.epa.gov/infrastructure/solid-waste-infrastructure-recycling-grants-communities">https://www.epa.gov/infrastructure/solid-waste-infrastructure-recycling-grants-communities</a> |
| US EPA                    | Consumer Recycling Education and Outreach Grant Program         | inform the public about recycling/composting programs, increase collection rates, decrease contamination  | <a href="https://www.epa.gov/infrastructure/consumer-recycling-education-and-outreach-grant-program">https://www.epa.gov/infrastructure/consumer-recycling-education-and-outreach-grant-program</a> |
| The Recycling Partnership | Residential Drop-Off Recycling Grant Program                    | To develop and improve facilities and signage at drop off recycling sites   | <a href="https://recyclingpartnership.org/drop-off-recycling-program-grant/">https://recyclingpartnership.org/drop-off-recycling-program-grant/</a>   |
| The Recycling Partnership | Residential Curbside Recycling Cart Grant                       | To advance recycling in communities through the implementation of cart-based curbside recycling   | <a href="https://recyclingpartnership.org/recycling-cart-grant/">https://recyclingpartnership.org/recycling-cart-grant/</a>   |
| The Recycling Partnership | Grants for Processors/Materials Recovery Facilities (MRF)       | Grants for general MRF assistance, and various material-specific grants   | <a href="https://recyclingpartnership.org/grants/">https://recyclingpartnership.org/grants/</a>   |
| Illinois DCEO             | Community Development Block Grants (CDBG)                       | Economic development grant, funds a wide range of projects that create and retain jobs in Illinois  | <a href="https://dceo.illinois.gov/communitydevelopment/cdbg_programs.html">https://dceo.illinois.gov/communitydevelopment/cdbg_programs.html</a>   |
| Delta Regional Authority  | States' Economic Development Assistance Program (SEDAP)         | SEDAP provides direct investments for basic public infrastructure, transportation infrastructure, business development with an emphasis on entrepreneurship, and workforce development. | <a href="https://dra.gov/programs/critical-infrastructure/sedap/">https://dra.gov/programs/critical-infrastructure/sedap/</a>   |
| USDA                      | Composting and Food Waste Reduction Cooperative Agreements      | assist local and municipal governments with projects that develop and test strategies for planning and implementing municipal compost plans and food waste reduction plans.             | <a href="https://www.usda.gov/topics/urban/coop-agreements">https://www.usda.gov/topics/urban/coop-agreements</a>   |



## Appendix 1 – Notice of Planning

The following notice of planning was published in Perry County Newspapers in May 2024:

“Perry County is updating its County Solid Waste and Recycling Plan. This update is required by the State of Illinois. Solid waste planning is designed to describe the type and amount of waste in a county, evaluate processes, and propose management measures related to solid waste and recycling.

The county will be working with the Greater Egypt Regional Planning and Development Commission to create the plan. This will include current and future solid waste and recycling information. A public, informational meeting will occur during the planning process.

For more information, visit [greateregypt.org/solid-waste-planning](http://greateregypt.org/solid-waste-planning).”

| <b>Weekly-Press</b><br>P.O. Box 411<br>Du Quoin, IL 62832<br>+1 618-357-6397<br>news@pinckneyvillepress.com or<br>dqweeklynews@gmail.com  | <b>WEEKLY-Press</b><br><i>Perry County's News Source. Locally Owned. Locally Staffed.</i> |  |     |        |                             |
|---|---|--|-----|--------|-----------------------------|
| <b>INVOICE</b>  |   |  |     |        |                             |
| BILL TO<br>Greater Egypt Regional Planning Development Commission   |   |  |     |        |                             |
| DATE<br>05/24/2024  | TERMS<br>Net 30   |  |     |        |                             |
| <small>Please make checks payable to Weekly-Press. Credit or Debit Card Payments Can Be Made Over The Phone By Calling 618-357-6397 or at our office at 104 E. Main St. Du Quoin, IL. 62832</small> |   |  |     |        |                             |
| DATE  | ACTIVITY  | DESCRIPTION  | QTY | RATE   | AMOUNT                      |
| 05/22/2024  | Advertising   | 3x5 Ad for Perry County Solid Waste & Recycling Management Planning Public Survey Notice | 1   | 120.00 | 120.00                      |
| Thank you for your business. If you would like to pay with a credit or debit card by phone call 618-357-6397 or at our office at 104 E. Main St. Du Quoin, IL. 62832 We appreciate your business!   |   |  |     |        | <b>BALANCE DUE \$120.00</b> |
| Please Make Checks Payable To Weekly-Press. Credit or Debit Card Payments Can Be Made Over The Phone By Calling 618-357-6397 or at our office at 104 E. Main St. Du Quoin, IL. 62832                |   |  |     |        |                             |
| Page 1 of 1   |   |  |     |        |                             |

## **Appendix 2 – Meeting Agenda and Minutes**

Meeting 1 – 6/13/2023

**Perry County Solid Waste and Recycling Plan  
Meeting 1  
June 13, 2023  
10:00 AM**

**Perry County Government Building  
3764 State Route 13-127, Conference Room  
Pinckneyville, IL 62274**

### **AGENDA**

- 
- 1.) Welcome and Introductions
  - 2.) Illinois Solid Waste and Recycling Act – Purpose and Requirements
  - 3.) IEPA Grant Information
  - 4.) Planning Process & Timeline
  - 5.) Advisory Committee
  - 6.) Adjourn

---

Greater Egypt Regional Planning and Development Commission  
3117 Civic Circle Boulevard, Suite A  
Marion, IL 62959 (618) 997-9351

## **Perry County Solid Waste and Recycling Plan - Minutes**

June 13, 2023 10:00AM

Perry County Government Building, 3764 State Route 13-127, Conference Room, Pinckneyville, IL

### **In attendance**

Ruth Hawkins, Trustee, The Village of St, Johns

Becky Tracy, Solid Waste Manager, Perry County

### **Staff Present**

Kelsey Bowe, *Environmental Planner*

Tyler Carpenter, *GIS and Environmental Planning Director*

---

Tyler Carpenter with Greater Egypt opened the meeting with introductions of staff and attendees. A review of the Solid Waste and Recycling Act occurred which detailed the purpose and requirements for both solid waste and recycling. Staff reviewed the grant application process and funding for the plan.

The planning process was detailed which included partnerships, information requests, plan narrative, GIS/mapping, and meetings. While Greater Egypt will take the planning lead for the project, the agency will act in conjunction with the Perry County Solid Waste Manager. Participation in the plan will be needed by the communities in the county. Since some may not be able to attend meetings, a small questionnaire will be sent to allow them to be eligible for the plan. The Advisory Committee will be formed in the near future to provide input and progress plan development.

Plan narrative will be based on information retrieved and findings from potential analyses. Greater Egypt also plans to develop an interactive map to allow the public to easily locate waste/recycling centers and other information.

Along with Advisory Committee meetings, staff will hold at least one public meeting. This will likely include maps, figures, and a presentation.

Staff reviewed the timeline for the project. With the extended grant, the goal is to complete the plan in April 2024. Staff also detailed: public notice of planning start, advisory committee details, review and adoption, next steps and future planning.

Meeting adjourned.

---

Greater Egypt Regional Planning and Development Commission  
3117 Civic Circle Boulevard, Suite A  
Marion, IL 62959 (618) 997-9351

**Perry County Solid Waste and Recycling Plan  
Meeting 2  
January 23, 2024  
10:00 AM**

**Virtual Meeting – ZOOM**  
[LINK \(Click\)](#)

**AGENDA**

- 1.) Welcome and Introductions
  - 2.) Review - Illinois Solid Waste and Recycling Act
  - 3.) Review - IEPA Solid Waste Grant
  - 4.) Planning Process
    - a. Advisory Committee
    - b. Municipal Participation
    - c. Priors Plans
  - 5.) Current Planning
    - a. Waste Generation/ Composition
    - b. Infrastructure
    - c. Materials/ Management
  - 6.) Timeline and Future Meeting(s)
  - 7.) Adjourn
- 

---

Greater Egypt Regional Planning and Development Commission  
3117 Civic Circle Boulevard, Suite A  
Marion, IL 62959 (618) 997-9351



## **Perry County Solid Waste and Recycling Plan – Meeting Three Minutes**

January 25, 2024 10:00AM

Virtual (Zoom)

### **In attendance**

1

### **Staff Present**

2

Tyler Carpenter (Greater Egypt) opened the meeting with introductions of staff and attendees. Staff reviewed the planning completed since the last meeting in June.

Staff reviewed participation from communities in Perry County. From the returned forms, there are needs in communities for recycling and waste opportunities. Results will be detailed in the plan. There is also interest in electronic recycling events.

Staff reviewed the planning process and the plan outline. This will include an Intro and County background, Regional Plan Updates, Waste Generation and Composition, Materials Management, Public Education and Outreach, and Management Recommendations. Staff reviewed the current planning data and regional mapping tool.

Staff reviewed the public education and outreach component needed for the plan. This will include information and messaging, public meetings, waste pickup events and a residential survey during the planning process. Management measures were also discussed. These will be needed from the communities. Prior planning recommendations were presented. The timeline for the remaining planning timeline was presented.

Meeting adjourned.

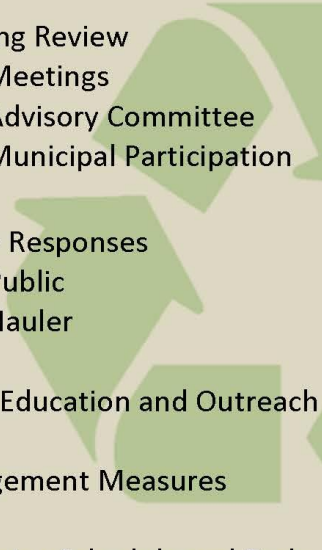
---

Greater Egypt Regional Planning and Development Commission  
3117 Civic Circle Boulevard, Suite A  
Marion, IL 62959 (618) 997-9351

**Perry County Solid Waste and Recycling Plan  
Meeting 3  
August 27, 2024  
10:00 AM**

**Virtual Meeting – ZOOM  
[LINK \(Click\)](#)**

**AGENDA**

- 1.) Welcome and Introductions
  - 2.) Planning Review
    - a. Meetings
    - b. Advisory Committee
    - c. Municipal Participation
  - 3.) Survey Responses
    - a. Public
    - b. Hauler
  - 4.) Public Education and Outreach
  - 5.) Management Measures
  - 6.) Remaining Schedule and Tasks
  - 7.) Comments and Questions
  - 8.) Adjourn
- 

---

Greater Egypt Regional Planning and Development Commission  
3117 Civic Circle Boulevard, Suite A  
Marion, IL 62959 (618) 997-9351



## **Perry County Solid Waste and Recycling Plan – Meeting Four Minutes**

August 27, 2024 10:00AM

Virtual (Zoom)

### **In attendance**

2

### **Staff Present**

2

Tyler Carpenter (Greater Egypt) opened the meeting with introductions of staff and attendees. Staff reviewed the planning completed since the last meeting in early 2024. Staff reviewed participation from communities in the county. The remaining municipalities will be contacted to meet the participation requirement.

Staff reviewed the Public and Hauler Surveys. Most respondents were from the City of Du Quoin. Lloyd's Hauling is the hauler for most of the respondents. The most important waste and recycling issues mentioned were: needing a compost/yard waste facility, more recycling bins in areas, community needs a recycling drop off location and municipality needs a curbside recycling program. The needs for more recycling and waste options is a large concern for residents.

Four businesses replied to the hauler survey. Most of them operate beyond Perry County. Republic Services offer most services in the area including commercial trash and recycling. Hauler responses were reviewed and will be detailed in the plan.

Staff reviewed the public education and outreach component needed for the plan. This will include information and messaging, public meetings, waste pickup events and a residential survey during the planning process. Management measures were also discussed. These will be needed from the communities and Advisory Committee. The remaining planning timeline was presented.

Meeting adjourned.

---

Greater Egypt Regional Planning and Development Commission  
3117 Civic Circle Boulevard, Suite A  
Marion, IL 62959 (618) 997-9351

# Appendix 3 – Public Survey Flyers and Publication

Pinckneyville Press – 5/22/24:

Page 7 Weekly - Press Wednesday, May 22, 2024

## Rep. Friess Holds Shred Event in Pinckneyville



On May 11, Rep. Friess held a shred event in Pinckneyville at the Perry County Fairgrounds. Above: This was a drive-up event where residents dropped off their cop...

**Perry County Solid Waste & Recycling Management Planning  
Public Survey Notice**

Greater Egypt Regional Planning and Development Commission and Perry County are working to update the Solid Waste & Recycling Plan in accordance with 415 ILCS 12 and 15

We want to hear from you!

To learn more and to take the public survey for your county, scan the code below or visit <https://greateregypt.org/solid-waste-planning/>

|   |  |
|---|--|
| English Version:  | Versión en Español:  |
|  |  |

**Du Quoin American Legion**  
**Roy Mitchell Post 647**



Flyer posted at recycling drop off and city halls:

**Public Survey Alert!**

We want to hear from you!



**Perry County encourages community input on our update to the County Solid Waste & Recycling Management Plan**

Scan the codes below to take the survey

Thank you for participating!

**English Version:**



**Versión en Español:**



This Plan will be updated in accordance with 415 ILCS 12 (Solid Waste Hauling and Recycling Program Act) and 415 ILCS 15 (Solid Waste Planning and Recycling Act). This project has been fully funded through the Illinois Environmental Protection Agency (IEPA) Solid Waste Planning Grant Program.

