

# TRI- COUNTY SOLID WASTE MANAGEMENT PLAN



*Five-Year Solid Waste Management Plan Update for:  
Franklin, Jefferson, and Williamson Counties*

*Meeting 4*



# AGENDA

## Speakers:

### **Tyler Carpenter**

*Environmental Planning Director*  
[tylercarpenter@greateregypt.org](mailto:tylercarpenter@greateregypt.org)

### **Kelsey Bowe**

*Environmental Planning Coordinator*  
[kelseybowe@greateregypt.org](mailto:kelseybowe@greateregypt.org)



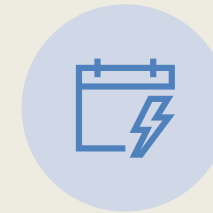
Welcome and  
Introductions



Planning Review



Planning  
Process



Current Planning



Public Education  
and Outreach



Future Planning  
and Timeline

# Solid Waste Recycling Act (415 ILCS 15)

- Provide incentives for decreased generation of municipal waste
- Require counties to develop comprehensive waste management plan
  - Emphasis on recycling and alternatives to landfills
- Encourage municipal recycling and source reductions
- Promote composting of yard waste

# PLANNING PROCESS/ REQUIREMENTS

## County Coordinators

- Franklin County – Angela Evans, *County Board Member*
- Jefferson County – Amy Harrison, *Administrator, Jefferson County Health Department*
- Williamson County – Alex Simpson, *Supervisor of Assessments*

## Advisory Committee

- Meeting attendees, county/city officials

## Municipal Participation

- Municipal survey (required), meeting attendance (optional but encouraged)

# PLANNING PROCESS

## Waste/Recycling Survey

- Please return asap
- It is a State requirement that Municipalities participate in the planning process

### Tri-County Solid Waste Management Plan Questionnaire for municipalities



Name of City/Village:

County:

1) Does your municipality have scheduled trash pick-up?  Yes  No

If yes, Does the municipality run the program or do you contract with a private hauling company?

2) Does your municipality have scheduled recycling pickup?  Yes  No

If yes, Does the municipality run the program or do you contract with a private hauling company?

3) Does your municipality have recycling drop off locations?  Yes  No

# and locations:

4) Does your municipality have electronic recycling events?  Yes  No

#/year and locations:

5) Does your municipality conduct large waste pickup events or host free dump days? (Furniture, home construction waste, etc.)  Yes  No

#/year and locations:

6) If your municipality has no waste services, would you like to suggest any for future consideration? These suggestions will be added into the Plan but you will not be required to implement them. (Can be suggested but contingent on funding/resources)

# PLANNING PROCESS

## Municipality Survey

- Not Returned:
  - Ewing
  - Macedonia
  - Orient
  - Freeman Spur
  - Valier
  - Zeigler
  - Bluford
  - Ina
  - Waltonville
  - Woodlawn

Franklin							
Municipality	Curbside Trash?	Hauler	Curbside Recycling?	Yard Waste Pickup?	Recycling Drop Off?	Electronic Recycling Events?	Clean-up/Dump Days?
Sesser		Republic					
Royalton		Republic					
Thompsonville		Bulldog					
West City		Republic					
Hanaford		Bulldog					
North City		Republic					
Christopher		Republic					
Benton		Republic					Reblic does bulk item pickup on Fridays, customer must call ahead
West Frankfort		Bulldog					
Buckner		Republic					

Jefferson							
Municipality	Curbside Trash?	Hauler	Curbside Recycling?	Yard Waste Pickup?	Recycling Drop Off?	Electronic Recycling Events?	Clean-up/Dump Days?
Belle Rive		Republic					
Bonnie		Republic					
Mt Vernon		Republic					Reblic does bulk item pickup on Fridays, customer must call ahead
Nason		Republic					
Dix		Republic					

# PLANNING PROCESS

## Municipality Survey

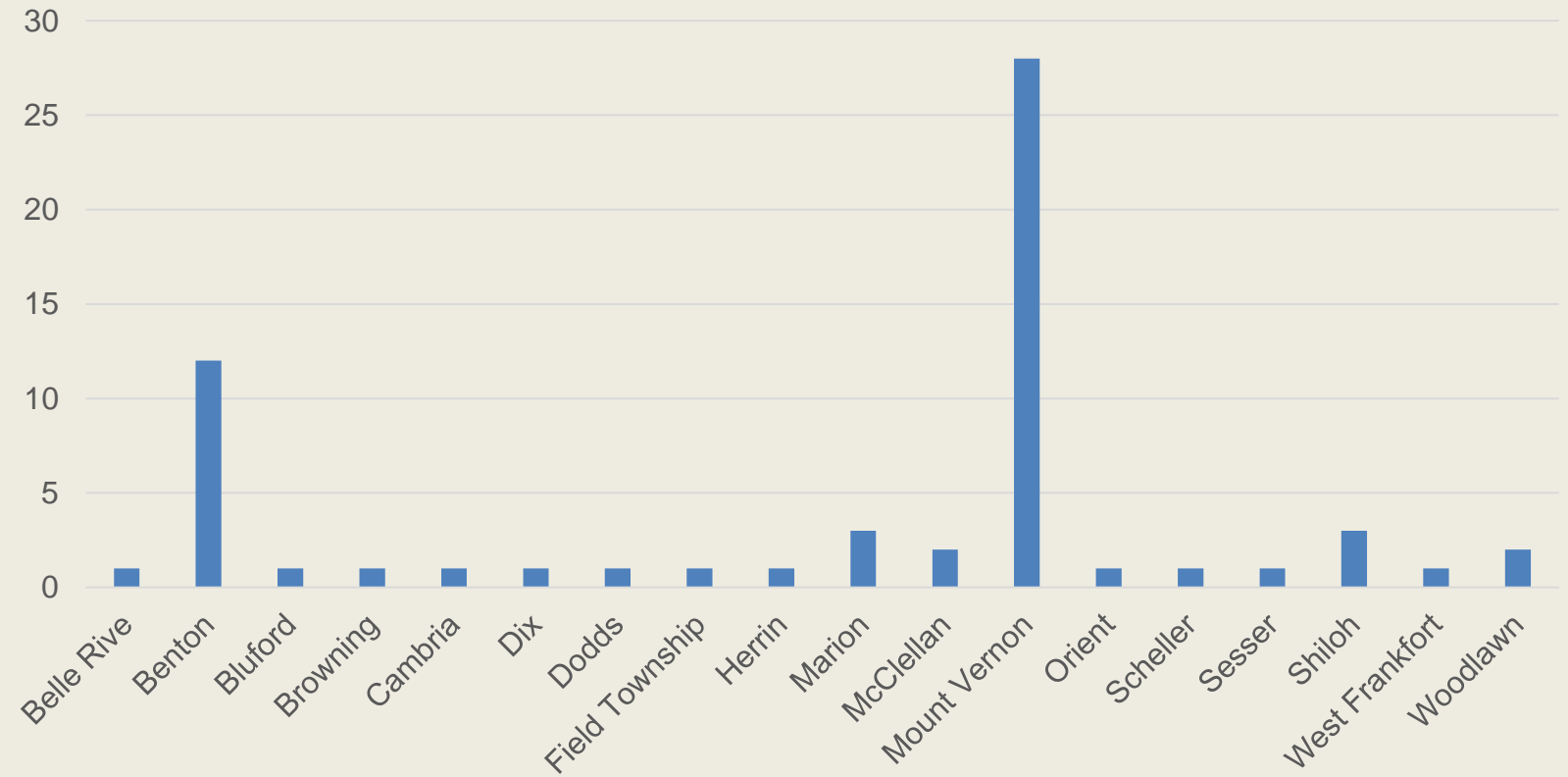
- Not Returned:
  - Colp
  - Creal Springs
  - Freeman Spur
  - Hurst
  - Johnston City

Williamson							
Municipality	Curbside Trash?	Hauler	Curbside Recycling?	Yard Waste Pickup?	Recycling Drop Off?	Electronic Recycling Events?	Clean-up/Dump Days?
Stonefort		Bulldog					
Crainville		Didn't List					
Cambria		Republic					
Cartersville		Republic					
Marion		NA					
Bush		Republic					
Energy		SI Waste Container					
Herrin		City of Herrin					
Pittsburg		SI Waste Container					
Spillertown		NA					

# PLANNING PROCESS

## Public Survey

- 62 total responses
- What city, village, or township do you live in?

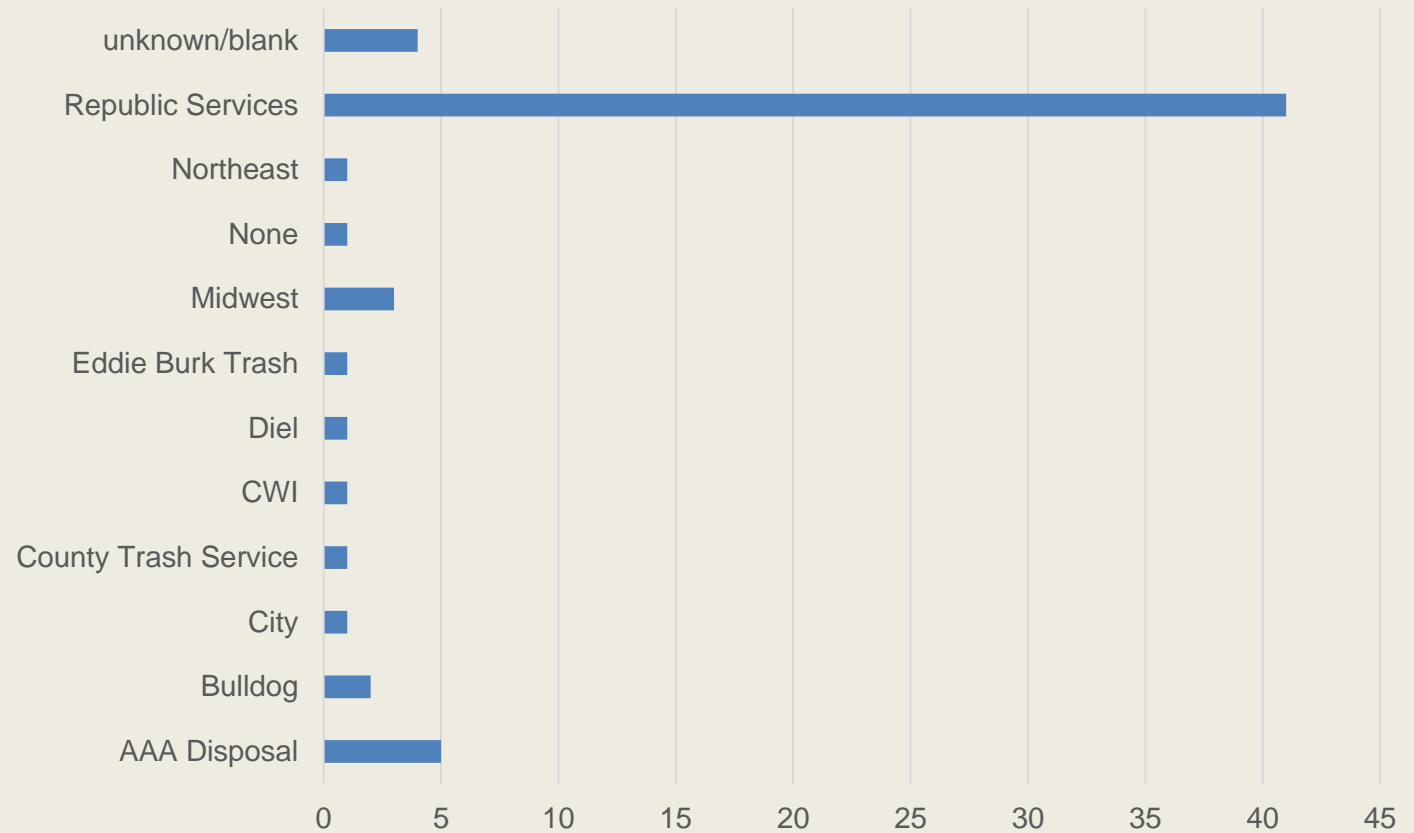




# PLANNING PROCESS

## Public Survey

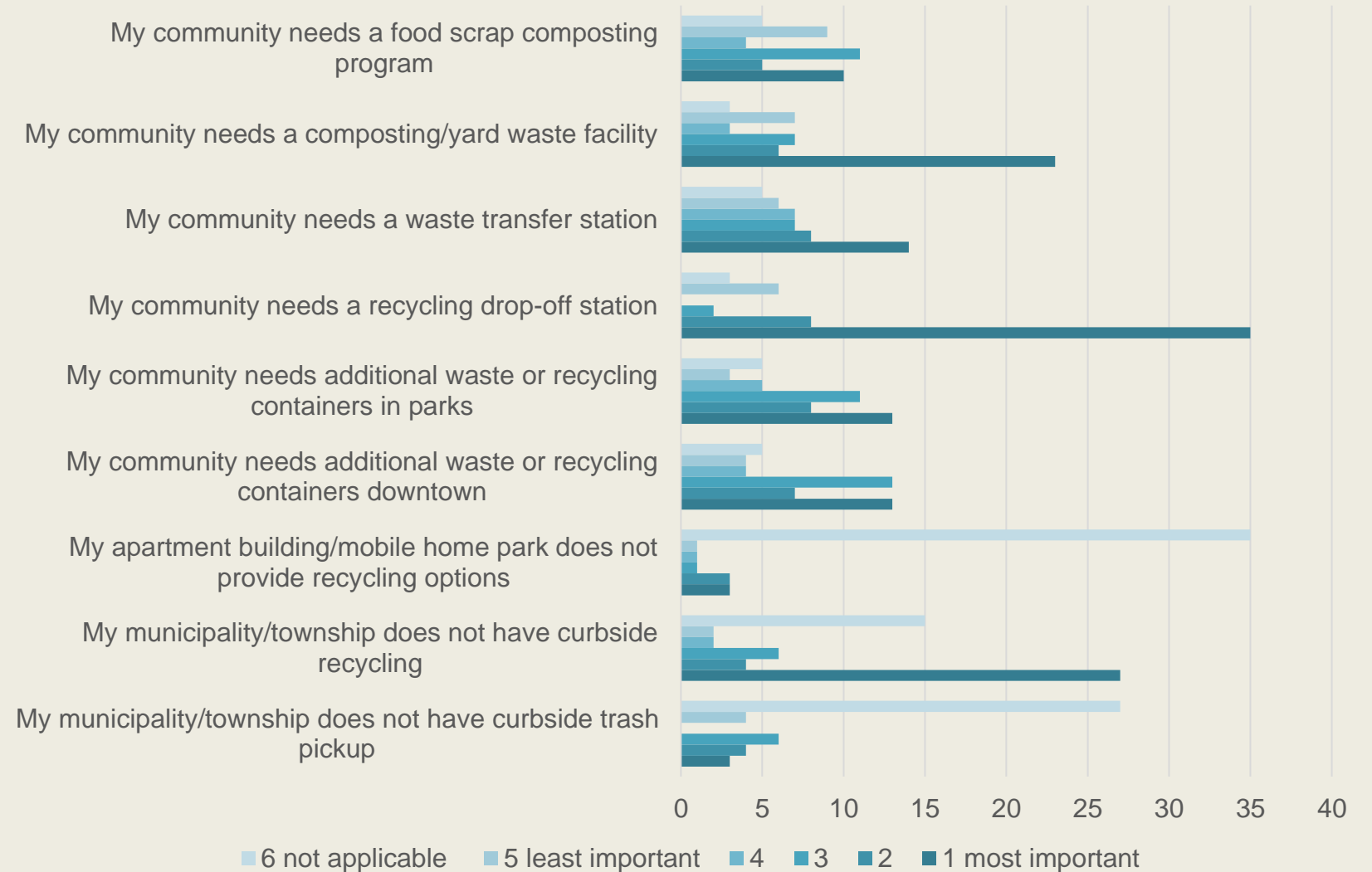
- Who is your waste hauler?



# PLANNING PROCESS

## Public Survey

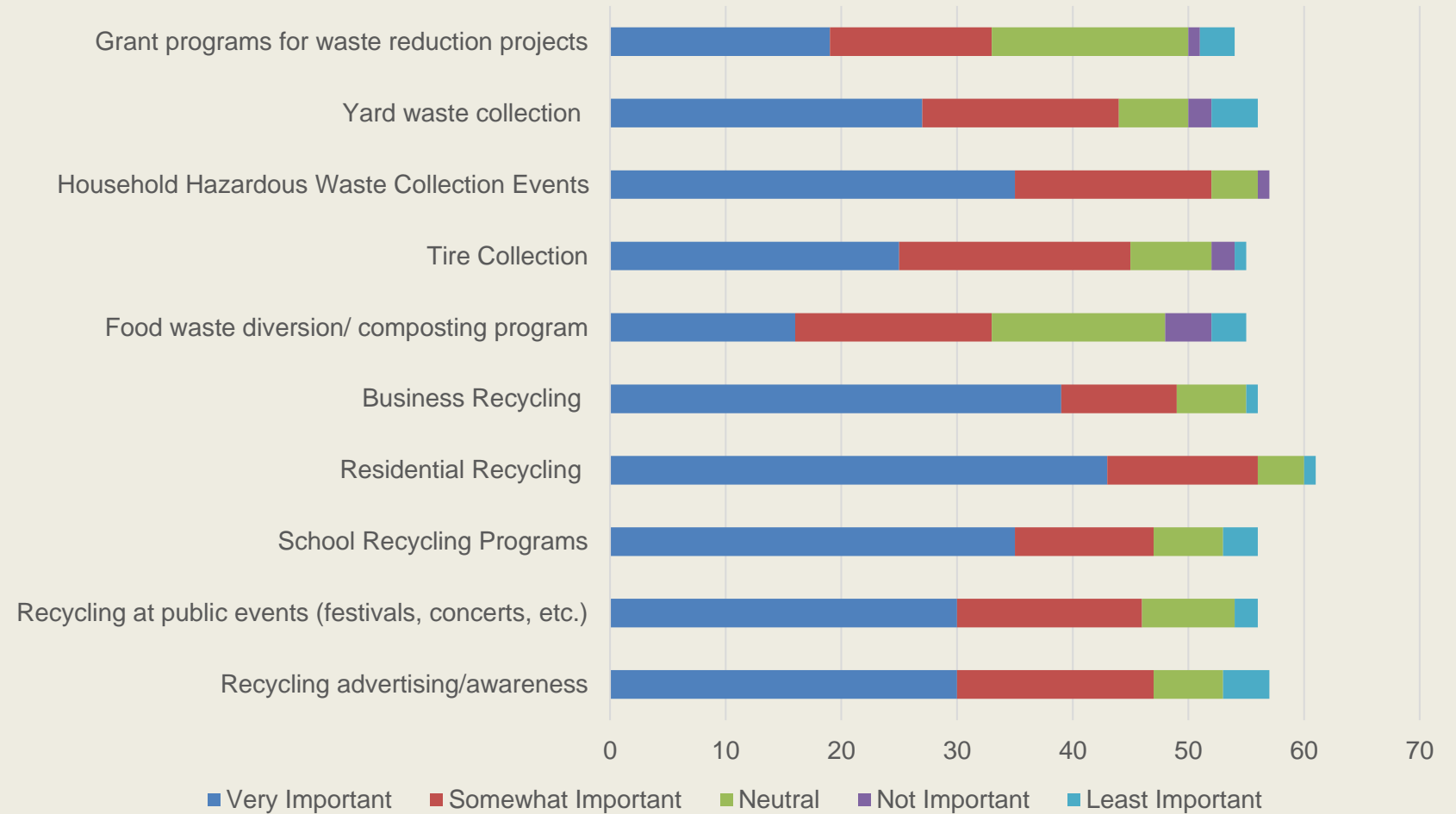
- What do you see as the biggest waste and recycling issues you face within your community in the next 5 – 20 years?



# PLANNING PROCESS

## Public Survey

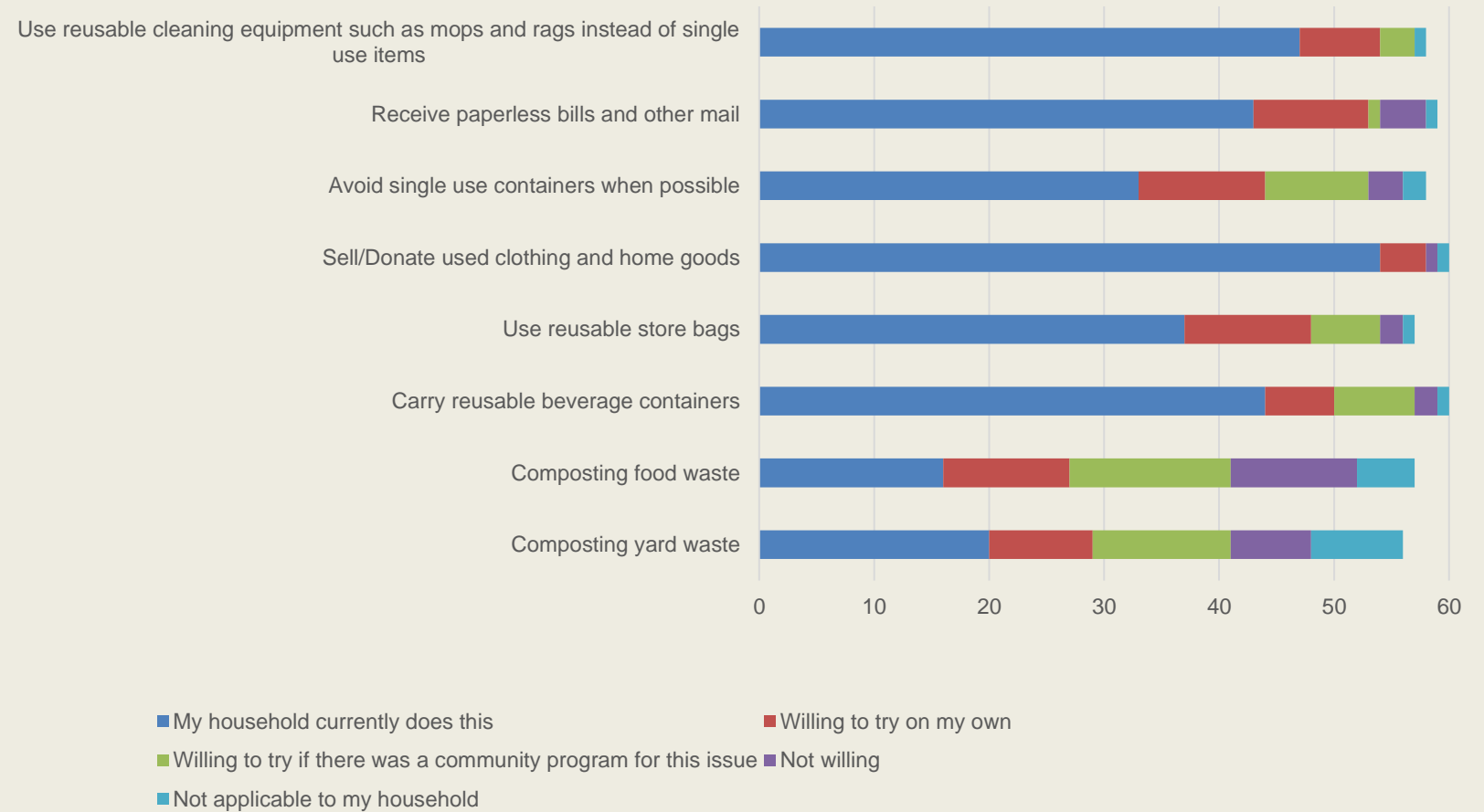
- In your opinion, what is the importance of the following potential and existing waste management programs in your County?



# PLANNING PROCESS

## Public Survey

- How willing would your household be in utilizing any of the following waste reduction techniques?



# PLANNING PROCESS

## Public Survey

- Full comment list will be available in Plan as an appendix

- *Few services in rural areas*
- *No recycling at apartment complexes*
- *Not enough electronic recycling opportunities*
- *Many communities do not have curbside recycling, but residents would like that service*
- *Not enough recycle drop off sites, if residents wanted to take their own recycling there is no where to go*
- *Lack of information on available programs and what materials are recyclable*
- *No yard waste disposal options*

## PLANNING PROCESS: Hauler Survey

- Four responses

County	Rural Trash Services LLC	Big Dawg Disposal	Quivey Sanitation, Inc.	Republic Services, Inc.
Franklin				
Jackson				
Jefferson				
Perry				
Williamson				

# PLANNING PROCESS: Hauler Survey

- **What services do you provide?**

Services	Rural Trash Services LLC	Big Dawg Disposal	Quivey Sanitation, Inc.	Republic Services, Inc.
Curbside trash hauling	Green	Orange	Green	Green
Curbside recycling	Green	Orange	Orange	Green
Commercial trash	Green	Orange	Green	Green
Commercial recycling	Green	Orange	Orange	Green
Rolloff dumpster rentals	Orange	Green	Green	Green
Contract with cities for curbside program (trash	Orange	Orange	Green	Green
Contract with cities for curbside program (trash	Orange	Orange	Orange	Green
Yard waste composting	Orange	Orange	Orange	Green
Food waste composting	Orange	Orange	Orange	Orange
Restauraunt oil recycling	Orange	Orange	Orange	Orange
other	Orange	Orange	Orange	Orange

Bulk Item Pickup - customer calls for a one-time pickup for a large item or a larger number of bagged items

## PLANNING PROCESS: Hauler Survey

- **Where do you take the waste that you collect?**

Location	Rural Trash Services LLC	Big Dawg Disposal	Quivey Sanitation, Inc.	Republic Services, Inc.
Perry Ridge Landfill				
West End Landfill				
Southern Illinois Regional Landfill				
Herrin Transfer Station				
Mt. Vernon Transfer Station				

- **Where do you take the recycling that you collect?**

Location	Rural Trash Services LLC	Big Dawg Disposal	Quivey Sanitation, Inc.	Republic Services, Inc.
Southern Recycling (CRC recycling)				
TNT Metal				
Herrin Transfer Station				
Republic Services Recycling Southside MRF				



## PLANNING PROCESS: Hauler Survey

- **Where do you take yard waste that you collect?**
- **What are some issues that your company faces?**

Location	Rural Trash Services LLC	Big Dawg Disposal	Quivey Sanitation, Inc.	Republic Services, Inc.
New Earth Compost, Carterville	NA	NA	NA	

Issue	Rural Trash Services LLC	Big Dawg Disposal	Quivey Sanitation, Inc.	Republic Services, Inc.
Cost of landfill/transfer station disposal				
Cost of recycling				
Lack of transfer stations in the southern Illinois area				
Lack of recycling facilities in the southern Illinois				
Lack of yard waste composting facilities in				
Recycling contamination				
Loss of customers				
Difficult to hire and/or retain staff				
Rural areas difficult to service				
Other (explain)				

## PLANNING PROCESS: Hauler Survey

- If you offer trash hauling but not recycling, what are the reasons preventing your company from providing this service?
  
- If food waste composting was an option in southern Illinois, is this a service your company could provide hauling for?

Issue	Rural Trash Services LLC	Big Dawg Disposal	Quivey Sanitation, Inc.	Republic Services, Inc.
Recycling Obstacle	Plastic recycling is limited to only grade 1 and 2	NA	Recycling is expensive to get rid of	NA

Answer	Rural Trash Services LLC	Big Dawg Disposal	Quivey Sanitation, Inc.	Republic Services, Inc.
Yes				
No				
Unsure at this time				

# CURRENT PLANNING: Where is local solid waste going?

- **Landfills**

- Perry Ridge – Perry County
- West End – Saline County
- Southern Illinois Regional – Jackson County

- **Transfer Stations**

- Energy
- Herrin
- Mt. Vernon
- Metropolis
- Sparta

- **Yard Waste Composting**

- New Earth Compost - Carterville

# CURRENT PLANNING: Where is local solid waste going?

- **Recycling Centers – Various materials**

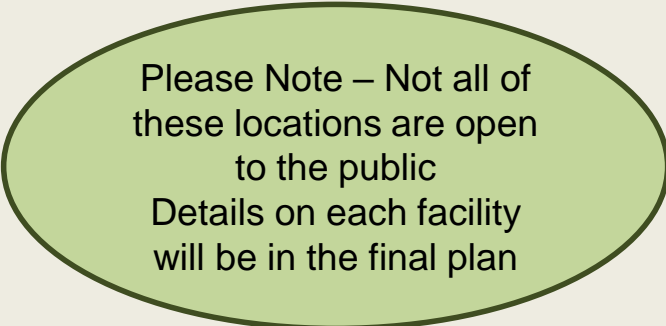
- CRC Southern Recycling – Carbondale
- Southside MRF Recycling Republic Services – St. Louis
- Progress Port - Carterville

- **Recycling Centers - Metal**

- Cimco Recycling – Marion & Carbondale
- T & T Recycling – Hurst & Benton
- Milano Metals & Recycling – Mt. Vernon
- Tilly's Salvage Yard - Elkville

- **Recycling Centers - Specialty**

- Ashalex Recycling – Marion  
(commercial construction/demolition waste)
- Midwest Tire Disposal – Benton
- Egyptian Electric Co-Op – Murphysboro  
(cfl lightbulbs only)
- Jackson County Health Dept – cfl lightbulbs,  
batteries

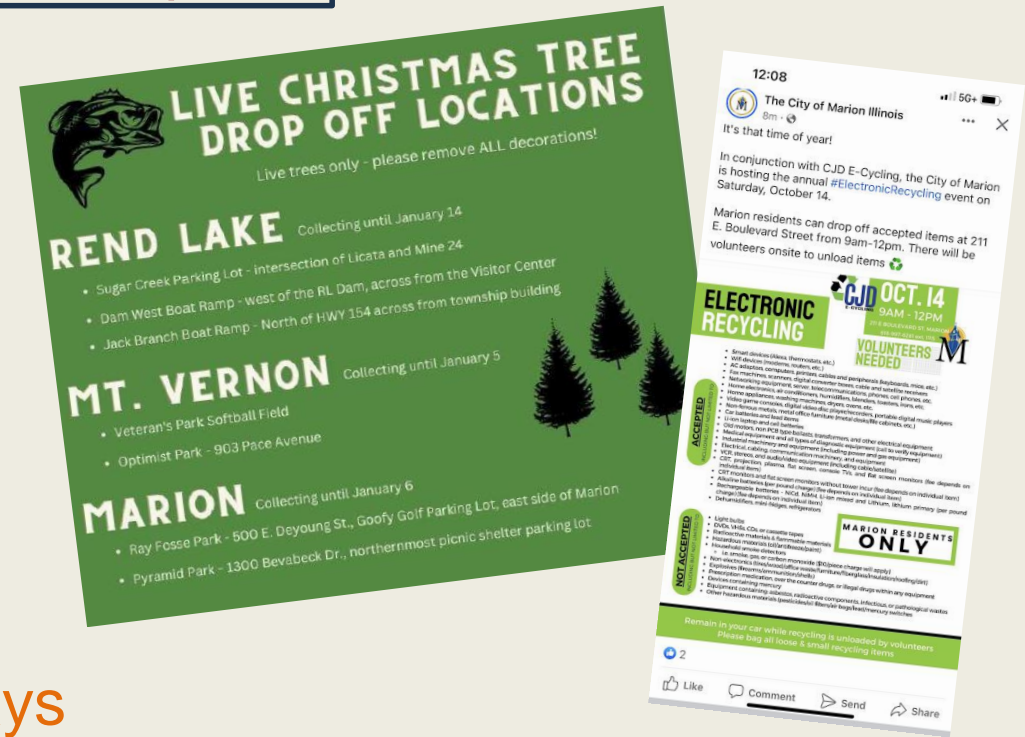


Please Note – Not all of  
these locations are open  
to the public  
Details on each facility  
will be in the final plan

# Public Outreach and Education

All Year - Annual Event – Biannual Event – Infrequent

- Medical Sharps Disposal
- Chemical Collection
- Christmas Tree Recycling
- Shred/Med Day
- Williamson County Spring/Fall Cleanup days



# Public Outreach and Education

- Reusables at Food Service Entities

## Other Illinois/IEPA Legislation:

- HB1837 – Burning of Landscape waste changes in the IEPA Act
- SB3686 – Battery stewardship program – IEPA
- SB2876 – Large Event facilities required to compost organic waste and transfer recyclables
- SB 0839 – IEPA Act & Paint stewardship – postconsumer paint options

# CURRENT PLANNING

## Solid Waste Plan Components

- Intro and County Background
- Regional Plan Updates
- Waste Generation and Composition
- Materials Management
- Public Education and Outreach
- **Management Recommendations**

Source Reduction	Comprehensive County-wide education/information programs should be implemented promoting source reduction and recycling.
	Current activities and programs of citizen groups should be intensified and coordinated with other programs.
	Commercial/institutional/industrial generators should seek technical assistance and perform waste audits so as to reduce their waste stream and increase recycling.
	Source reduction (and recycling) programs should be established in all major County, municipal and school facilities.
	County, municipalities and school districts should revise their procurement practices and specifications to promote source reduction and recycling.

Combustion	It does not appear that the development of a WTE facility is currently feasible or desirable in the Greater Egypt Region.
	Incineration is a municipal waste disposal option not recommended at this time due to high development and life cycle costs and regulatory uncertainties.
Landfill	Municipalities and haulers in the County should continue to utilize the Southern Illinois Regional and Saline County landfills unless other more economical or more convenient options become available.
	County should support the development of new landfills or expansions in adjacent counties so as to provide long term capacity and more competitive market conditions, providing that such developments meet all current environmental and fiscal requirements.

# CURRENT PLANNING

## Solid Waste Plan Components

- Intro and County Background
- Regional Plan Updates
- Waste Generation and Composition
- Materials Management
- Public Education and Outreach
- **Management Recommendations**

Recycling	Comprehensive County-wide education/information programs should be implemented promoting recycling and source reduction.
	Drop off recycling containers should be established at four to six locations throughout the County.
	At some outlying drop-off locations it may also be desirable to set up MW dumpsters to serve self-haulers and thus minimize opportunities for contamination of the recyclable materials.
	One or more mixed waste processing facilities ("dirty MRF's") should be established in the County to serve areas where curbside programs are not provided. Such facilities would also function as transfer stations. To facilitate material recovery, residents should be asked to put recyclable materials in blue bags.
	An education/information program, promoting commercial/institutional/industrial recycling and source reduction, should be implemented throughout the County
	Recycling (and source reduction) programs should be established in all major County, municipal, school and other local government facilities.
	County, municipalities and school districts should revise their procurement practices and specifications to promote the re-use of recycled materials.
	All business and institutions with more than 100 employees should be required to designate recycling coordinators and phase-in source separation of corrugated, paper and two or three other materials. Depending on program performance, smaller establishments can be phased-in in <i>the</i> future
	Major shopping centers should designate recycling coordinators and be required to provide recycling opportunities for their tenants that result in source separation of corrugated, paper and two or three other materials
	Haulers serving businesses and institutions should be required to collect the source separated materials and make arrangements for processing and marketing



# FUTURE PLANNING AND TIMELINE



Survey/ Worksheet Due

April 2024



Meeting 4

September 2024



Draft Release

October 2024



Final Review

December 2024

# Thank you!

- <https://greateregypt.org/solid-waste-planning/>
- Minutes to be posted