

Williamson County Community Wildfire Protection Plan

PLANNING MEETING 1

OCTOBER 26, 2023 1:30PM



Forest Service
U.S. DEPARTMENT OF AGRICULTURE



Agenda

Welcome & Introductions

Overview of planning process

Required info from Fire Jurisdictions

Summary of modeling

Questions/comments

Planning Team & Roles

Greater Egypt Staff

- Tyler Carpenter – GIS & Environmental Planning Director
- Kelsey Bowe – Environmental Planner
- Organize meetings, Data collection & wildfire modeling, write plan, match documentation and project reporting

Meeting attendees:

- Please use zoom chat to introduce yourselves
- (this helps us record attendance for match)

Planning Team & Roles

Greater Egypt Staff

- Tyler Carpenter – GIS & Environmental Planning Director
- Kelsey Bowe – Environmental Planner
- Organize meetings, Data collection & wildfire modeling, write plan, match documentation and project reporting

WCFPD/ Fire Chiefs / EMA

- Fire history data, mutual aid agreements, current response capabilities, list of future needs

Forest Service

- Provide technical assistance as needed, review plan to ensure it aligns with the Northeast-Midwest Cohesive Strategy

USFWS/ USP Marion/ Touch of Nature

- Fire history & other GIS data as needed, Site specific needs, future projects

IDNR

- Provide technical assistance if needed, review plan to ensure it aligns with Illinois State Forest Acton Plan

Planning Team & Roles

Other:

- Farm Bureau & Williamson County Soil and Water Conservation District have been invited to participate
- Public meeting will be held later in planning process
- Newspaper ads, other outreach to reach landowners?
- Campground Owners?

National & Regional Cohesive Strategy Goals

1. Restore resilient landscapes
2. Create fire adapted communities
3. Increase safety and efficiency of wildfire response



Restore resilient landscapes

- Increase prescribed fire opportunities and training
- Provide suggested forest management techniques, including prescribed fire, to restore and maintain native oak-hickory forests, remove invasive species, and remove excessive fuels on the landscape in Williamson County.
 - Touch of Nature Land Management Plan
 - Crab Orchard National Wildlife Refuge Management Goals
 - IL State Forest Action Plan
- Review and update wildfire risk maps across the county, especially at the Wildland-Urban Interface (WUI)
- Review and identify specific areas in need of hazardous fuels reduction and other mitigation strategies to improve the health and safety of the landscape

Create fire adapted communities

- Increase community level preparation for wildfires
- Develop collaborative partnerships across jurisdictions:
 - Review and revise mutual aid agreements as necessary
 - Review wildfire response capabilities of each jurisdiction and identify needs for future trainings and equipment
 - Review and identify areas of priority for wildfire mitigation strategies to protect the life, property, and infrastructure within Williamson County.
- Conduct public meetings and surveys regarding wildfire response, WUI safety, and forest management practices
- Incorporate wildfire safety lessons into existing outreach programs
- Meet with local and county officials about the benefits of adopting a roofing ordinance for Williamson County. This will also be a component of public meetings and surveys.
- Provide suggested strategies for landowners to reduce the risk of wildfire on private property
- Add wildfire educational lessons into existing outreach programs, coordinate with partner groups to create and share education materials.

Increase safety and efficiency of wildfire response

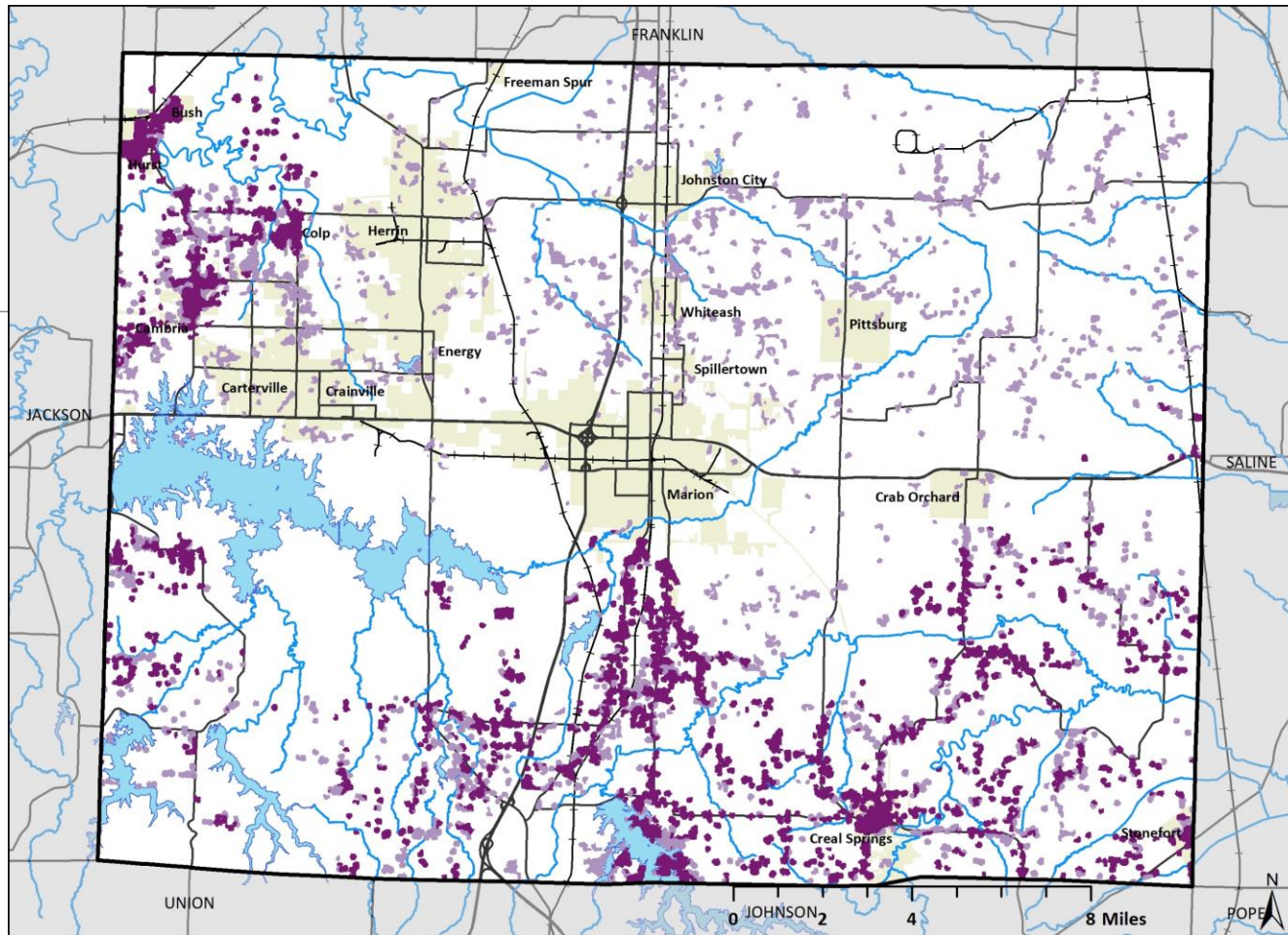
- Get local fire departments more involved in wildland fire management, including community planning, WUI awareness, wildland fire training, evacuation planning, prescribed fire and other hazard mitigation strategies & activities
- Collect wildfire data from all jurisdictions within the county to create a comprehensive database and interactive maps.
- Incorporate climate change effects into wildfire risk models, southern Illinois is experiencing increases in both flooding and droughts, with shifts in historic climatic regimes.

Work Plan

Work Item	Starting Point	Unit Of Time	Duration	Unit Of Time	Work Complete By:
Organize Resources	1	MONTHS	3	MONTHS	Greater Egypt and Williamson County FPD
Assess Hazards/ Risks	2	MONTHS	8	MONTHS	Greater Egypt and Williamson County FPD
Write Plan	1	MONTHS	16	MONTHS	Greater Egypt
Meetings- Goals and Objectives	4	MONTHS	3	MONTHS	Greater Egypt, Williamson County FPD, and Planning Team
Meetings- Public Involvement	6	MONTHS	2	MONTHS	Greater Egypt, Williamson County FPD, and Planning Team
Meetings- Mitigation Activities	10	MONTHS	2	MONTHS	Greater Egypt, Williamson County FPD, and Planning Team
Meetings- Review, Final Public Input	18	MONTHS	2	MONTHS	Greater Egypt, Williamson County FPD, and Planning Team
Review Plan	19	MONTHS	2	MONTHS	Greater Egypt, Williamson County FPD, and Planning Team
Finalize Plan	20	MONTHS	2	MONTHS	Greater Egypt and Williamson County FPD
Print Plan	22	MONTHS	22	MONTHS	Greater Egypt
State/ Federal Review	22	MONTHS	24	MONTHS	USDA/USFS

Risk Assessments & Mapping

- WUI boundaries & Hazardous fuels locations
- Fuel types
- Burn probabilities
- Fire models (Flammap6, ArcFuels)
- Evac routes, shelter locations, and water sources – Current and proposed improvements



Wildland Urban Interface (WUI) - Williamson County, Illinois

- Lakes
- Streams
- Major Roads
- Railroad
- WUI type
- Interface
- Intermix
- Municipality

Map Author: Kelsey Bowe
 Greater Egypt Regional Planning &
 Development Commission
 Data Sources: IEPA, US EPA, U.S.
 Census Bureau,
 Carlson, A.R., Helmers, D.P.,
 Hawbaker, T.J., Mockrin, M.H., and
 Radeloff, V.C., 2022, Wildland-
 urban interface maps for the
 conterminous U.S. based on 125
 million building locations: U.S.
 Geological Survey data release

Information needed

- Wildfire history for each jurisdiction
- How each fire jurisdiction defines wildfire
- Mutual aid agreements within the county
- List of future needs (training, personal, equipment, water sources, other)
 - To be developed after modeling

Greater Egypt will prepare data collection forms for each fire department to fill and return

Questions/comments?
