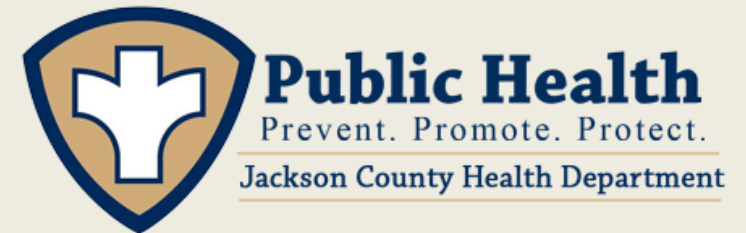


# SOLID WASTE AND RECYCLING MANAGEMENT PLAN

---



*Solid Waste Management Plan Update for  
Jackson County*

*Meeting 1 – September 26, 2023*



# AGENDA

## Speakers:

**Angie Kuehl**

**Jackson County Health Department**

*Recycling Coordinator*

*angiek@jchdonline.org*

**Tyler Carpenter**

**Greater Egypt**

*Environmental Planning Director*

*tylercarpenter@greateregypt.org*

**Kelsey Bowe**

**Greater Egypt**

*Environmental Planner*

*kelseybowe@greateregypt.org*



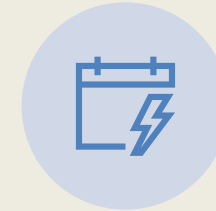
Welcome and  
Introductions



Planning Review



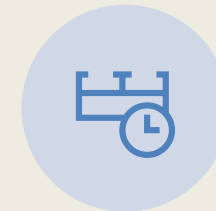
Planning  
Process



Current Planning



Public Education  
and Outreach



Future Planning  
and Timeline

# Solid Waste Recycling Act (415 ILCS 15)

- Provide incentives for decreased generation of municipal waste
- Require counties to develop comprehensive waste management plan
  - Emphasis on recycling and alternatives to landfills
- Encourage municipal recycling and source reductions
- Promote composting of yard waste

# Solid Waste Minimum Requirements

1. A description of the origin, content and weight or volume of municipal waste currently generated within the county's boundaries, and the origin, content, and weight or volume of municipal waste that will be generated within the county's boundaries during the next 20 years, including an assessment of the primary variables affecting this estimate and the extent to which they can reasonably be expected to occur.
2. A description of the facilities where municipal waste is currently being processed or disposed of and the remaining available permitted capacity of such facilities.
3. A description of the facilities and programs that are proposed for the management of municipal waste generated within the county's boundaries during the next 20 years, including, but not limited to their size, expected cost and financing method.
4. An evaluation of the environmental, energy, life cycle cost and economic advantages and disadvantages of the proposed waste management facilities and programs.

# Solid Waste Minimum Requirements

5. A description of the time schedule for the development and operation of each proposed facility or program.
6. The identity of potential sites within the county where each proposed waste processing, disposal and recycling program will be located or an explanation of how the sites will be chosen. For any facility outside the county that the county proposes to utilize, the plan shall explain the reasons for selecting such facility.
7. The identity of the governmental entity that will be responsible for implementing the plan on behalf of the county and explanation of the legal basis for the entity's authority to do so.
8. Any other information that the Agency may require. (d) Any county may delegate power to a municipality within the county or Municipal Joint Action Agency for the specific purpose of preparing the waste management plan or any portion thereof under this Act. (e) Counties may, by intergovernmental agreement, jointly create and administer their solid waste management plans, provided that such joint plans fulfill all the requirements of this Act. (Source: P.A. 86-228.)

# Recycling Program Requirements

1. shall be implemented throughout the county and include a time schedule for implementation of the program.
2. shall provide for the designation of a recycling coordinator to administer the program.
3. shall be designed to recycle, by the end of the third and fifth years of the program, respectively 15% and 25% of the municipal waste generated in the county, **subject to the existence of a viable market for the recycled material**, based on measurements of recycling and waste generated in terms of weight. The determination of recycling rate shall not include: discarded motor vehicles, wastes used for clean fill or erosion control, or commercial, institutional or industrial machinery or equipment.
4. may provide for the construction and operation of one or more recycling centers by a unit of local government, or for contracting with other public or private entities for the operation of recycling centers.

# Recycling Program Requirements

6. may require residents of the county to separate recyclable materials at the time of disposal or trash pick-up.
7. may make special provision for commercial and institutional establishments that implement their own specialized recycling programs, provided that such establishments annually provide written documentation to the county of the total number of tons of material recycled.
8. shall provide for separate collection and composting of leaves.
9. shall include public education and notification programs to foster understanding of and encourage compliance with the recycling program.

# Recycling Program Requirements

10. shall include provisions for compliance, including incentives and penalties.
11. shall include provisions for (i) recycling the collected materials, (ii) identifying potential markets for at least 3 recyclable materials, and (iii) promoting the use of products made from recovered or recycled materials among businesses, newspapers and local governments in the county.
12. may provide for the payment of recycling diversion credits to public and private parties engaged in recycling activities.



# PLANNING PROCESS/ REQUIREMENTS

## County Coordinators

- Jackson County – Angie Kuehl, *Recycling Coordinator*

## Advisory Committee

- Meeting attendees, county/city officials
- Reach out to others

# PLANNING PROCESS/ REQUIREMENTS

## Participation Requirements

- All municipalities must participate in the planning process
- Participation can be met through:
  1. Meeting attendance
  2. Completed Waste/Recycling Questionnaire

# PLANNING PROCESS/ REQUIREMENTS

## Waste/Recycling Survey

- One month to complete
- Additional questions

### Jackson County Solid Waste Management Plan Questionnaire for municipalities



Name of City/Village:

1) Does your municipality contract for residential trash pick-up?  Yes  No

If yes, what company and does that contract include curbside recycling?

2) Does your municipality have scheduled yard waste pickup?  Yes  No

If yes, Does the municipality run the program or do you contract with a private hauling company, and how is the yard waste disposed of?

3) Does your municipality have electronic recycling events?  Yes  No

frequency and locations:

4) Does your municipality conduct large waste pickup events or host free dump days?  Yes  No

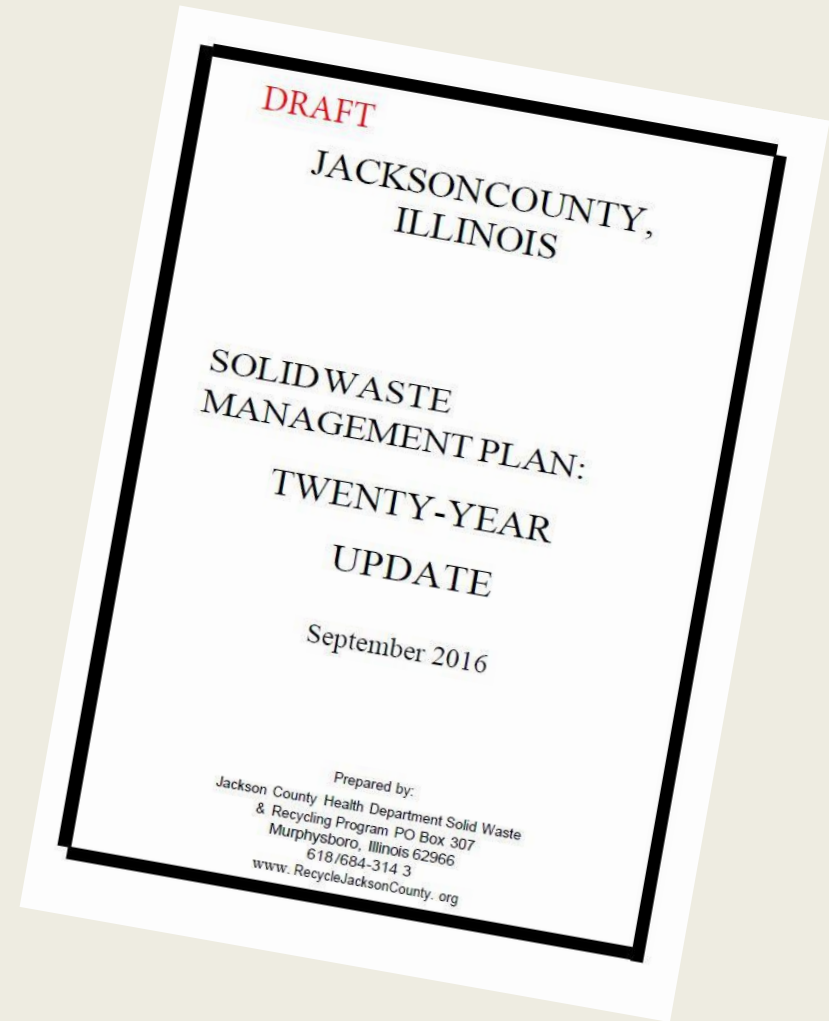
frequency and locations:

5) Do you want to expand your dump days with support from JCHD? Check all that apply:

- Tires
- Electronics
- Paint
- Furniture
- Home Construction Waste
- Other \_\_\_\_\_

# PREVIOUS PLANNING EFFORTS

- *Twenty Year Update, September 2016*
  - *Waste Description*
  - *Recycling Practices*
  - *Jackson County Recycling Programs*



# PREVIOUS PLANNING EFFORTS

	<b>Implemented</b>
	<b>Uncertain</b>
	<b>Not Implemented</b>

Component	Task	Implementation
Source Reduction	Comprehensive County-wide education/information programs should be implemented promoting source reduction and recycling.	
	Current activities and programs of citizen groups should be intensified and coordinated with other programs.	
	Commercial/institutional/industrial generators should seek technical assistance and perform waste audits so as to reduce their waste stream and increase recycling.	
	Source reduction (and recycling) programs should be established in all major County, municipal and school facilities.	
	County, municipalities and school districts should revise their procurement practices and specifications to promote source reduction and recycling.	

# PREVIOUS PLANNING EFFORTS

Recycling	Comprehensive County-wide education/information programs should be implemented promoting recycling and source reduction.	
	Drop off recycling containers should be established at four to six locations throughout the County.	
	At some outlying drop-off locations it may also be desirable to set up MW dumpsters to serve self-haulers and thus minimize opportunities for contamination of the recyclable materials.	
	One or more mixed waste processing facilities ("dirty MRF's") should be established in the County to serve areas where curbside programs are not provided. Such facilities would also function as transfer stations. To facilitate material recovery, residents should be asked to put recyclable materials in blue bags.	
	An education/information program, promoting commercial/institutional/industrial recycling and source reduction, should be implemented throughout the County	
	Recycling (and source reduction) programs should be established in all major County, municipal, school and other local government facilities.	
	County, municipalities and school districts should revise their procurement practices and specifications to promote the re-use of recycled materials.	
	All business and institutions with more than 100 employees should be required to designate recycling coordinators and phase-in source separation of corrugated, paper and two or three other materials. Depending on program performance, smaller establishments can be phased-in in <i>the</i> future	
	Major shopping centers should designate recycling coordinators and be required to provide recycling opportunities for their tenants that result in source separation of corrugated, paper and two or three other materials	
	Haulers serving businesses and institutions should be required to collect the source separated materials and make arrangements for processing and marketing	

# PREVIOUS PLANNING EFFORTS

Combustion	It does not appear hat the development of a WTE facility is currently feasible or desirable in the Greater Egypt Region.	
	Incineration is a municipal waste disposal option not recommended at this time due to high development and life cycle costs and regulatory uncertainties.	
Landfill	Municipalities and haulers in the County should continue to utilize the Southern Illinois Regional and other County landfills unless other more economical or more convenient options become available.	
	County should support the development of new landfills or expansions in adjacent counties so as to provide long term capacity and more competitive market conditions, providing that such developments meet all current environmental and fiscal requirements.	

CURRENT  
PLANNING

Plan  
Outline

---

*Introduction and County Background*

---

*Regional Plan Updates*

---

*Waste Generation and Composition*

---

*Materials Management*

---

*Public Education and Outreach*

---

*Management Recommendations*

---



# CURRENT PLANNING

## Available Data and Information

- *Jackson County Health Department – Twenty Year Update (2016)*
- *Illinois Commodity/Waste Generation and Characterization Study (2015)*
- *Illinois Electronics Recycling Program Report, IEPA (2019)*
- *Illinois Materials Management Advisory Committee Report to the General Assembly (2021)*
- *Illinois Landfill Disposal Report, IEPA (2022)*
- *Hazardous Materials Emergency Planning Program, IEMA (ongoing)*

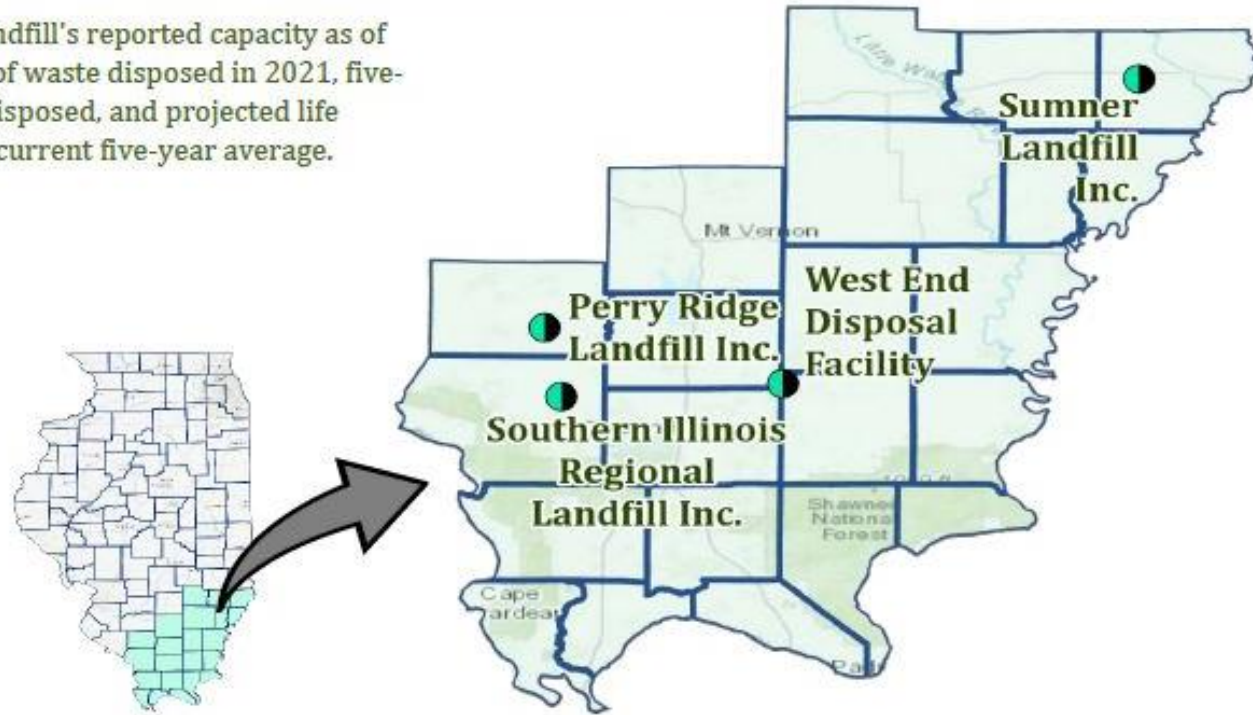
## Waste Generation and Composition

- Sources
- Quantities
- Residential vs Commercial
  
- Residential
- Landfill
- Recyclables

# CURRENT PLANNING

	Disposal Volume Reported (Gate cy)	Disposal Volume (Post-Compaction In-place cy)	Five-Year Average Disposal Volume (In-place cy)	Remaining Capacity Reported (In-place cy)	Lifetime Expectancy (Year)
<b>Region 7: Southern Illinois</b>					
Perry Ridge Landfill Inc.	237,875	228,726	183,364	11,147,038	61
Southern Illinois Regional Landfill Inc.	1,080,051	432,020	436,069	17,693,371	41
Sumner Landfill Inc.	203,054	92,297	94,490	2,715,307	29
West End Disposal Facility	283,513	141,757	139,833	12,059,699	86
<b>Totals:</b>	<b>1,804,493</b>	<b>894,800</b>	<b>853,755</b>	<b>43,615,414</b>	<b>51</b>

The table reflects each landfill's reported capacity as of January 1, 2022, volume of waste disposed in 2021, five-year average of volume disposed, and projected life expectancy based on the current five-year average.



# CURRENT PLANNING

Name	County	Address	Contact	Disposal Volume Reported (gate cy)	Disposal Volume (post-compaction in-place)	5 Year average Disposal Volume (in-place cy)	Capacity Reported (in-place cy)	Lifetime expectancy (year)
Perry Ridge Landfill Inc.	Perry	6305 Sacred Heart Rd Du Quoin IL	<a href="http://www.perryridgelandfill.com/">http://www.perryridgelandfill.com/</a>	237,875	228,726	183,364	11,147,038	61
Southern Illinois Regional Landfill Inc.	Jackson	1540 Landfill Rd, De Soto, IL 62924	<a href="https://www.republicservices.com/customer-support/facilities#landfills">https://www.republicservices.com/customer-support/facilities#landfills</a>	1,080,051	432,020	436,069	17,693,371	41
			16188672909					
West End Disposal Facility	Saline	1710 McFarland Rd #2061, Thompsonville, IL 62890	<a href="https://www.westendlandfill.com/">https://www.westendlandfill.com/</a>	283,513	141,757	139,833	12,059,699	86

*Illinois  
Commodity/Waste  
Generation and  
Characterization Study  
(2015)*

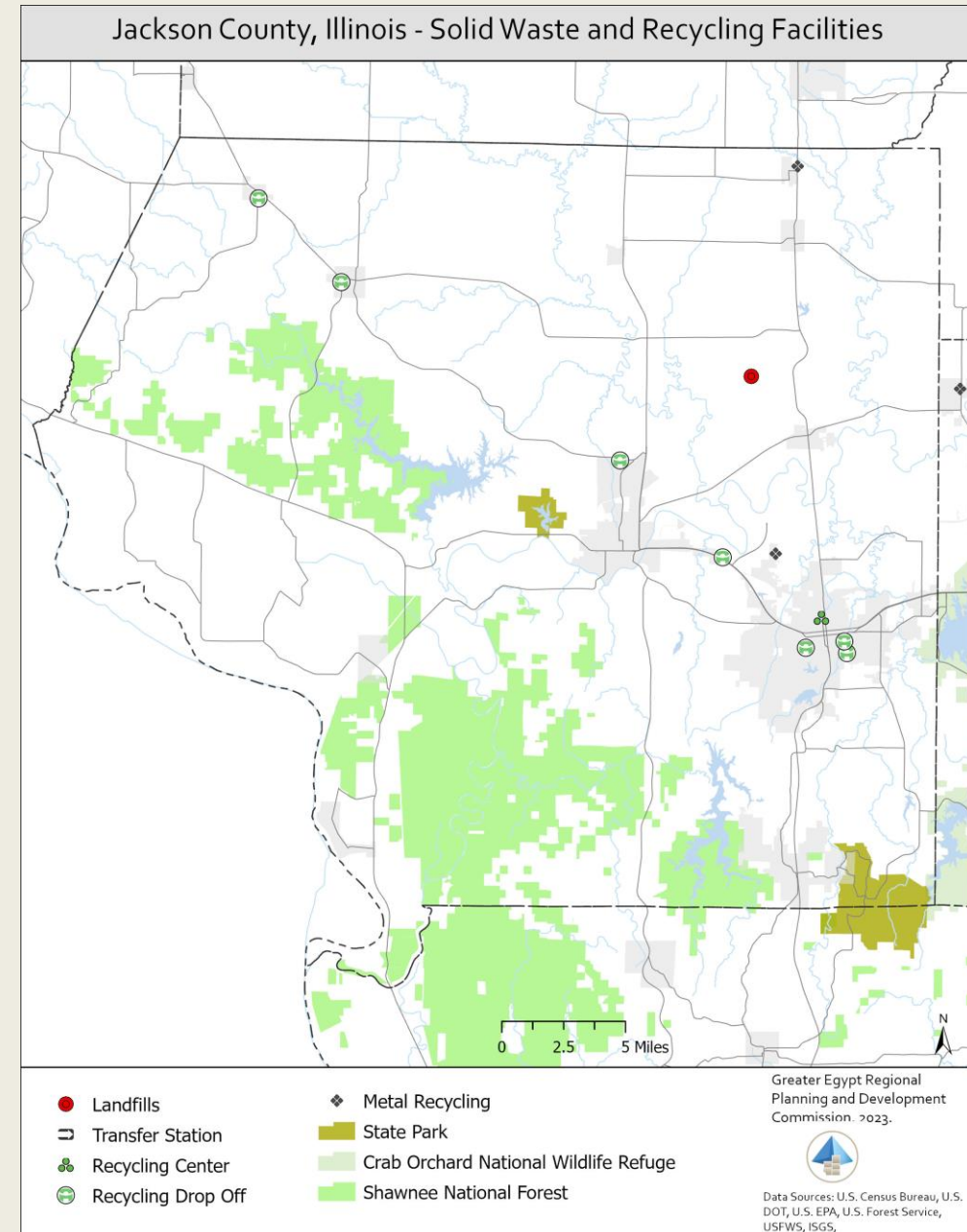
*Illinois Commodity/Waste  
Generation and Characterization  
Study (2015)*

<b>Material Generation</b>	<b>County Generation (lb/c/yr)</b>	<b>Total Generation (lb/yr)</b>
Paper	636	18,930
Beverage Containers	4	120
Plastic	270	8,030
Glass	86	2,560
Metal	123	3,670
Organics	555	16,530
Inorganics	175	5,210
Textiles	80	2,370
Household Hazardous Waste	27	810
Construction and Demolition Debris	579	17,250
<b>Total MSW WEIGHT</b>	<b>2,535</b>	<b>75,480</b>
<b>Total MSW lbs/person/day</b>	<b>6.95</b>	

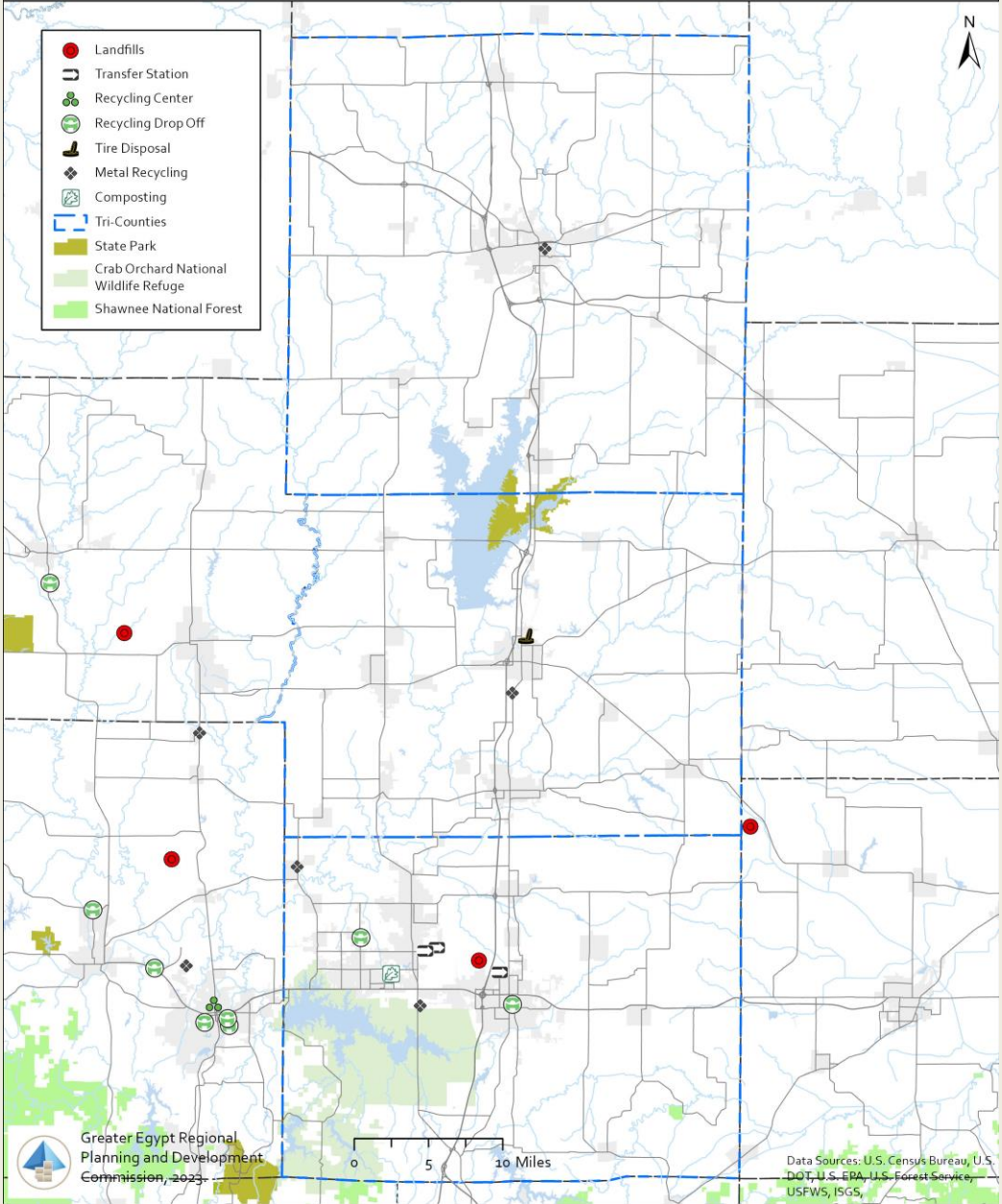
# CURRENT PLANNING

## Infrastructure

- Composting
- Landfills
- Metal Recycling
- Recycling Center
- Tire Disposal
- Transfer Station



# Tri-County Solid Waste Management Plan Area Services and Facilities



# CURRENT PLANNING

## Materials Management

- Minimize Waste
- Traditional Materials Recycling and Diversion
- Non-traditional Materials Management



# PUBLIC EDUCATION AND OUTREACH



Information and Messaging

Align with county goals



Public Meetings

Involve public during the planning process



Waste Pickup Events

Coordinated by county or collaborate with local businesses



School Programs

Assessment of school programs  
Needs from schools/districts

# FUTURE PLANNING AND TIMELINE



Return Solid Waste & Recycling  
Questionnaire

October 30, 2023



Meeting 2

Post-holidays?



Draft Release

April 2024



Meeting 3 (Final Review)

May 2024

# Thank you!

- <https://greateregypt.org/solid-waste-planning/>
- Look for survey/questionnaire in your email (next week)